

V&V Reference Report

L2 ASCDS Version : 8.4.5

Observation 61709 - L2 Version 3
Chandra X-Ray Center

L2 Processing Date : Sep 14 2012

Contents

1	Front	2
2	OBI	3
2.1	OBI	3
2.1.1	Images	3
2.1.2	Bias	3
2.1.3	Parameters	4
2.1.4	Events	4
2.2	Compared Parameters	5
2.3	Star Slots	6
2.4	FID Slots	6
A	Summary	7
A.1	Status	7
A.2	Comments	7

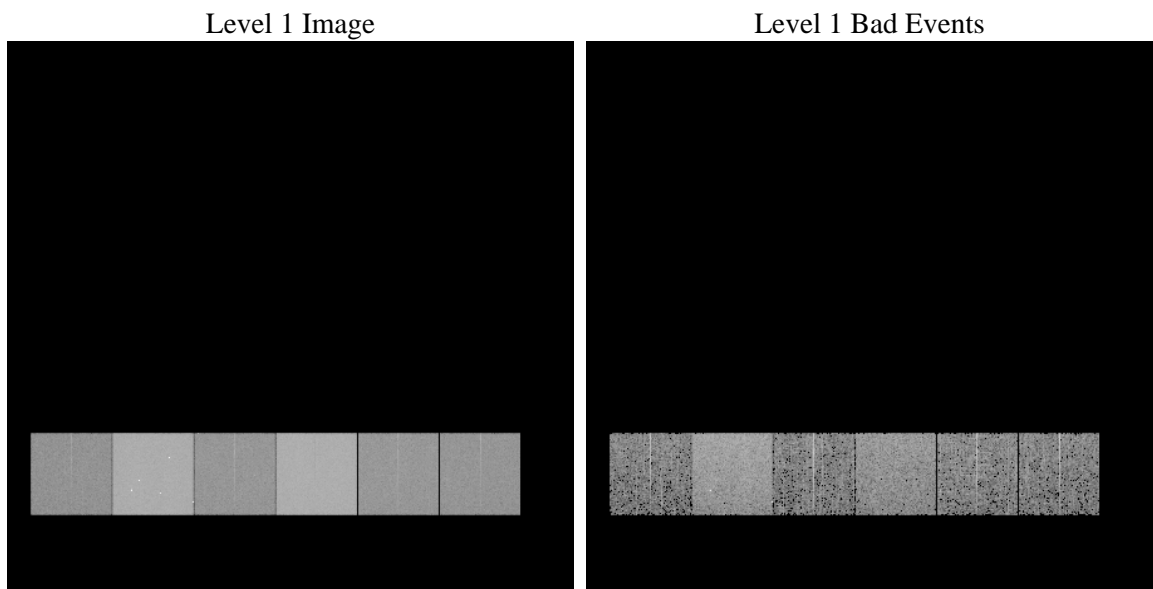
1 Front

seq_num	 	Sequence number
obs_id	61709	Observation id
title	ACIS-456789 diagnostics	Proposal title
observer	CHANDRA engineering request/realtime commanding	Principal investig
object	 	Source name
dtcycle	0	
cycle	P	events from which exps? Prim/Second/Both
ra_targ	0.0	Observer's specified target RA [deg]
dec_targ	0.0	Observer's specified target Dec [deg]
ra_nom	104.02856941354	Nominal RA [deg]
dec_nom	-40.018525857479	Nominal Dec [deg]
roll_nom	287.12496947056	Nominal Roll [deg]
revision	3	Processing version of data
ontime	5072.825793758	Sum of GTIs [s]
livetime	5008.5906190685	Livetime [s]
ontime4	1958.2163462937	Sum of GTIs [s]
ontime5	5435.8140112013	Sum of GTIs [s]
ontime6	2134.7180413753	Sum of GTIs [s]
ontime7	5072.825793758	Sum of GTIs [s]
ontime8	2202.8618814349	Sum of GTIs [s]
ontime9	2111.9075417519	Sum of GTIs [s]
l2events	1217395	Number of level 2 events

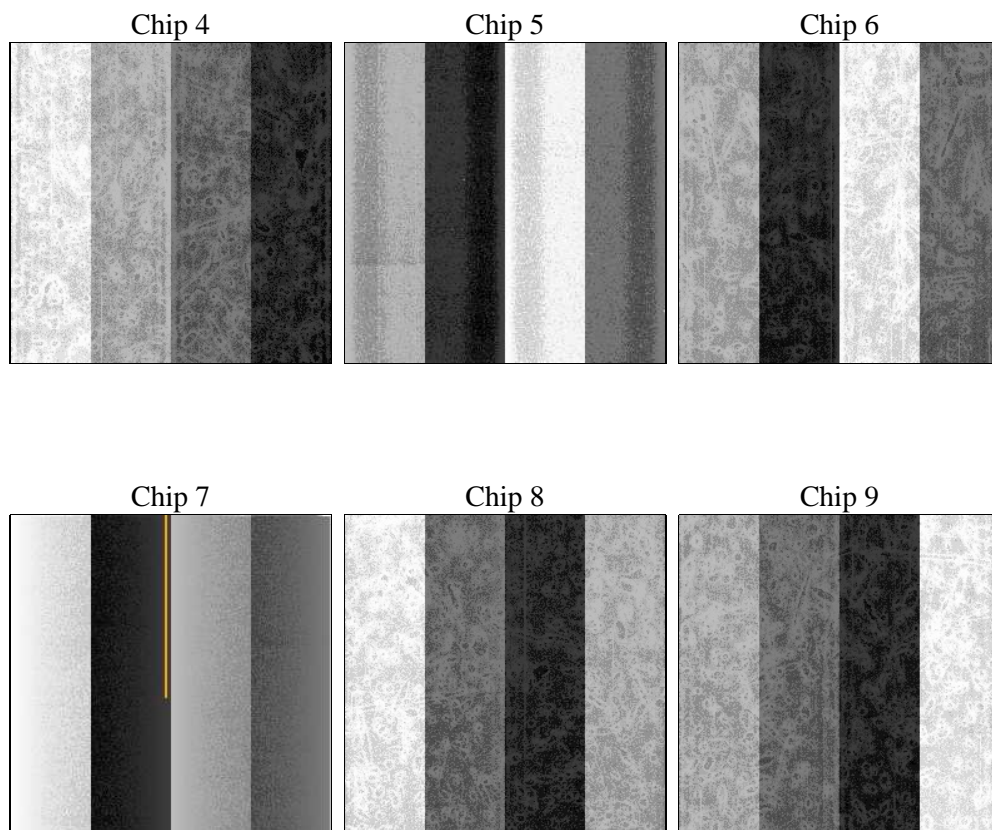
2 OBI

2.1 OBI

2.1.1 Images



2.1.2 Bias



2.1.3 Parameters

obi_num	0	Obi number	sched_exp_time	0.0	[s] Scheduled observation exposure time
ascdsver	8.4.5	Processing system revision	ontime	5072.825793758	Sum of GTIs [s]
caldsver	4.5.1.1	 	ontime4	1958.2163462937	Sum of GTIs [s]
date	2012-09-14T06:46:40	Date and time of file creation	ontime5	5435.8140112013	Sum of GTIs [s]
revision	3	Processing version of data	ontime6	2134.7180413753	Sum of GTIs [s]
			ontime7	5072.825793758	Sum of GTIs [s]
			ontime8	2202.8618814349	Sum of GTIs [s]
			ontime9	2111.9075417519	Sum of GTIs [s]
			l1events	1419044	Number of level 1 events

2.1.4 Events

	ccd 4	ccd 5	ccd 6	ccd 7	ccd 8	ccd 9		ccd 4	ccd 5	ccd 6	ccd 7	ccd 8	ccd 9
level 1 events	146831	377865	170044	385324	177552	161428	grade 0 events	73203	88607	82890	92246	86755	78526
rejected events	17795	40421	18588	28073	20826	18072		49%	23%	48%	23%	48%	48%
rejected %	12%	10%	10%	7%	11%	11%	grade 1 events	433	510	414	291	470	434
								0%	0%	0%	0%	0%	0%
							grade 2 events	22717	116638	25979	79615	27818	25383
								15%	30%	15%	20%	15%	15%
							grade 3 events	7948	22263	9388	36564	9773	8798
								5%	5%	5%	9%	5%	5%
							grade 4 events	7965	21984	9306	36157	9785	8948
								5%	5%	5%	9%	5%	5%
							grade 5 events	1201	8086	1427	5947	1556	1372
								0%	2%	0%	1%	0%	0%
							grade 6 events	17203	88041	23896	112785	22685	21701
								11%	23%	14%	29%	12%	13%
							grade 7 events	16161	31736	16744	21719	18710	16266
								11%	8%	9%	5%	10%	10%

2.2 Compared Parameters

Parameter	Planned	Actual	Parameter	Planned	Actual
Instrument	ACIS	ACIS	Obspar format version number	7	7
Detector	ACIS-456789	ACIS-456789	Obspar file type	PREDICTED	ACTUAL
Grating	NONE	NONE	Obspar update status	NONE	UPDATED
Data mode	FAINT	FAINT	On-chip summing requested	N	N
Observation mode	SECONDARY	SECONDARY	Subarray requested	NONE	NONE
[deg] Pointing RA	0	104.0285694135408	Alternating exposures requested	N	N
[deg] Pointing Dec	0	-40.01852585747921	[s] Primary exposure time	0.000000	3.2
[deg] Pointing Roll	0.0	287.1249694705576			
[mm] SIM focus pos	-0.684267	-0.6828225247311905			
[mm] SIM defocus	0	0.8505141146731063			
[mm] SIM translation stage pos	-190.132523	250.466033080201			
[mm] SIM translation stage offset	0	-0.01005468664627074			
[s] Observation start time (MET)	100741363.09	100741362.32159			
Observation start date	2001-03-11T23:42:43	2001-03-11T23:42:42			
[s] Observation end time (MET)	100764866.341	100764865.5725			
Observation end date	2001-03-12T06:14:26	2001-03-12T06:14:25			
Read mode	TIMED	TIMED			

2.3 Star Slots

2.4 FID Slots

A Summary

A.1 Status

V&V Scientist	Beth Sundheim
V&V Date (YYYY-MM-DD)	2012.09.18
V&V Edition	1
V&V Disposition and Status	OK
V&V Charge Time	5.072825793758

A.2 Comments