

V&V Reference Report

L2 ASCDS Version : 7.6.9

Observation 61706 - L2 Version 001
Chandra X-Ray Center

L2 Processing Date : Nov 7 2006

Contents

1	Front	2
2	OBI	3
2.1	OBI	3
2.1.1	Images	3
2.1.2	Bias	3
2.1.3	Parameters	4
2.1.4	Events	4
2.2	Compared Parameters	5
2.3	Aspect	6
2.4	Star Slots	8
2.5	FID Slots	8
A	Summary	9
A.1	Status	9
A.2	Comments	9

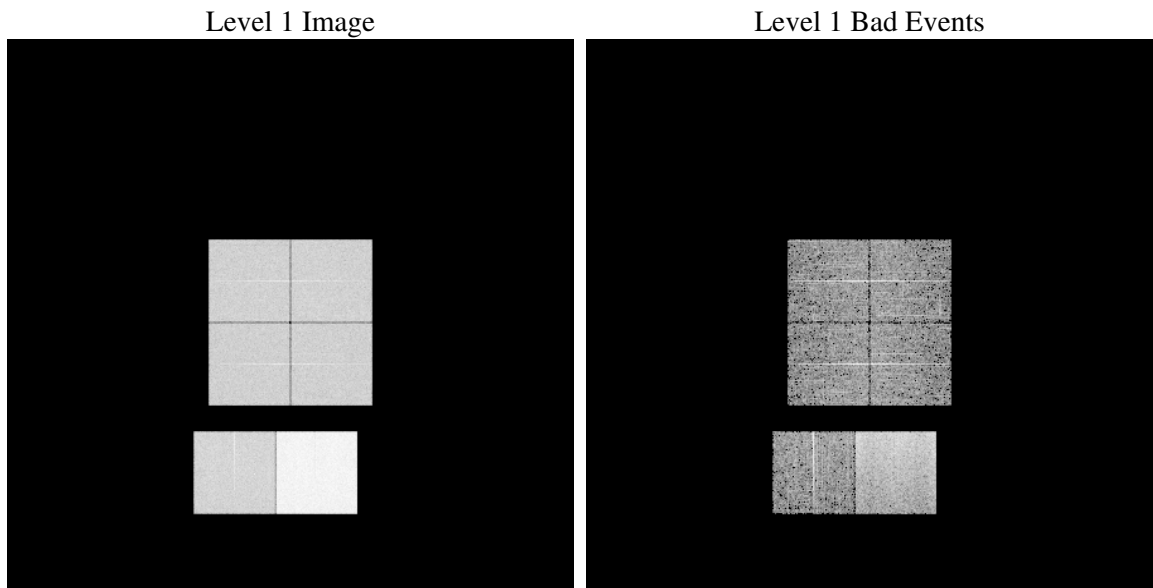
1 Front

seq_num	
obs_id	61706
title	ACIS-012367 diagnostics
observer	CHANDRA engineering request/realtime commanding
object	
dtcycle	0
cycle	P
ra_targ	0.0
dec_targ	0.0
ra_nom	179.96962818704
dec_nom	21.994599773335
roll_nom	158.23421688963
revision	2
ontime	6699.8525834382
livetime	6615.0150158598
ontime0	2681.0683250576
ontime1	2720.0016555339
ontime2	2583.9193149507
ontime3	2603.2014049292
ontime6	2833.5198361874
ontime7	6699.8525834382
l2events	1314881

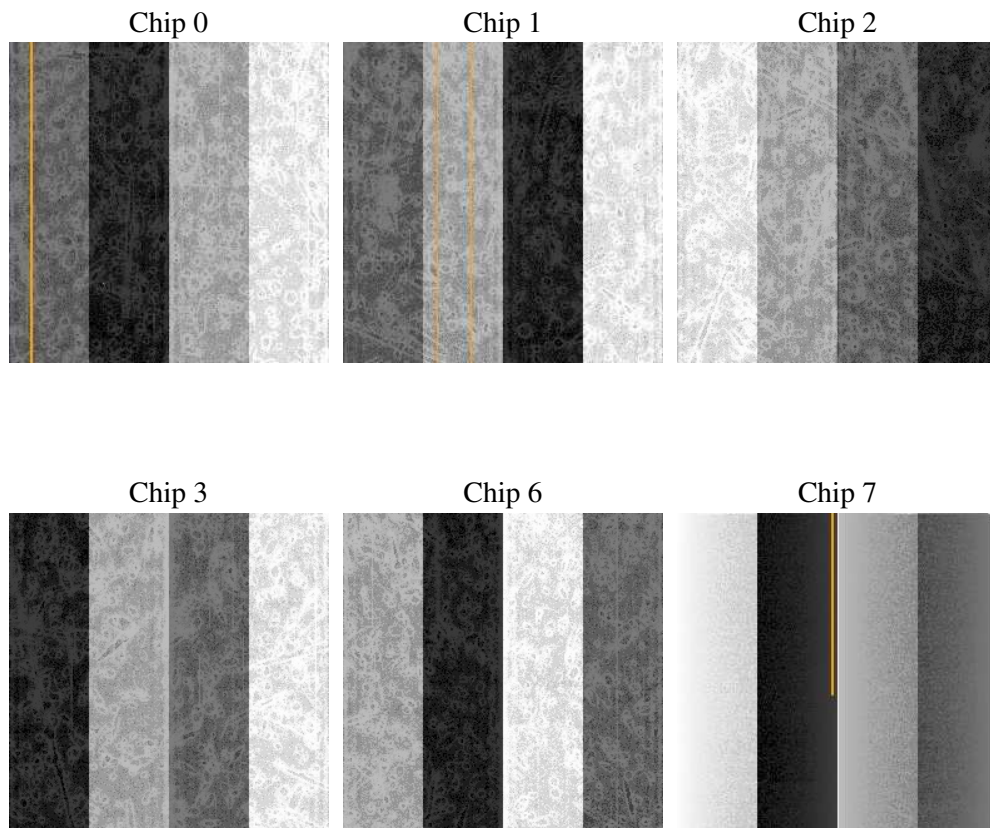
2 OBI

2.1 OBI

2.1.1 Images



2.1.2 Bias



2.1.3 Parameters

obi_num	0
ascdsver	7.6.9
caldbver	3.2.3
date	2006-11-08T03:26:45
revision	2

sched_exp_time	0.0
ontime	6702.4041883796
ontime0	2683.5788899958
ontime1	2722.4711804837
ontime2	2586.3477998972
ontime3	2605.7940498739
ontime6	2835.9072811306
ontime7	6702.4041883796
l1events	1533066

2.1.4 Events

	ccd 0	ccd 1	ccd 2	ccd 3	ccd 6	ccd 7
level 1 events	202583	204568	197717	199394	224178	504626
rejected events	21711	21551	21821	21709	22966	52372
rejected %	10%	10%	11%	10%	10%	10%

	ccd 0	ccd 1	ccd 2	ccd 3	ccd 6	ccd 7
grade 0 events	100042	100797	97718	99378	109389	84439
	49%	49%	49%	49%	48%	16%
grade 1 events	581	529	539	584	575	217
	0%	0%	0%	0%	0%	0%
grade 2 events	31733	32362	30815	31059	34984	134885
	15%	15%	15%	15%	15%	26%
grade 3 events	11418	11525	11230	11219	12548	34585
	5%	5%	5%	5%	5%	6%
grade 4 events	11449	11487	11150	11394	12415	34147
	5%	5%	5%	5%	5%	6%
grade 5 events	1551	1602	1505	1565	1752	7484
	0%	0%	0%	0%	0%	1%
grade 6 events	26473	27056	25208	24832	32135	164413
	13%	13%	12%	12%	14%	32%
grade 7 events	19336	19210	19552	19363	20380	44456
	9%	9%	9%	9%	9%	8%

2.2 Compared Parameters

Parameter	Planned	Actual	Parameter	Planned	Actual
Instrument	ACIS	ACIS	Obspar format version number	6	6
Detector	ACIS-012367	ACIS-012367	Obspar file type	PREDICTED	ACTUAL
Grating	NONE	NONE	Obspar update status	NONE	UPDATED
Data mode	FAINT	FAINT	On-chip summing requested	N	N
Observation mode	SECONDARY	SECONDARY	Subarray requested	NONE	NONE
Pointing RA	0	179.9696281870391	Alternating exposures requested	N	N
Pointing Dec	0	21.99459977333463	Primary exposure time	0.000000	3.2
Pointing Roll	0.0	158.2342168896288			
SIM focus pos (mm)	-0.782348	-0.6828225247311905			
SIM defocus (mm)	0	0.8505141146731063			
SIM translation stage pos (mm)	-233.592463	250.466033080201			
SIM translation stage offset (mm)	0	-0.01005468664627074			
Observation start time	100785893.192	100785892.42331			
Observation start date	2001-03-12T12:04:53	2001-03-12T12:04:52			
Observation end time	100796403.542	100796402.77372			
Observation end date	2001-03-12T15:00:04	2001-03-12T15:00:02			
Read mode	TIMED	TIMED			

2.3 Aspect

2.4 Star Slots

2.5 FID Slots

A Summary

A.1 Status

V&V Scientist	Jen Lauer
V&V Date (YYYY-MM-DD)	2006.11.08
V&V Edition	1
V&V Disposition and Status	OK
V&V Charge Time	6.69985258

A.2 Comments