

V&V Reference Report

L2 ASCDS Version : 7.6.9

Observation 61700 - L2 Version 001
Chandra X-Ray Center

L2 Processing Date : Nov 15 2006

Contents

1	Front	2
2	OBI	3
2.1	OBI	3
2.1.1	Images	3
2.1.2	Bias	3
2.1.3	Parameters	4
2.1.4	Events	4
2.2	Compared Parameters	5
2.3	Aspect	6
2.4	Star Slots	8
2.5	FID Slots	8
A	Summary	9
A.1	Status	9
A.2	Comments	9

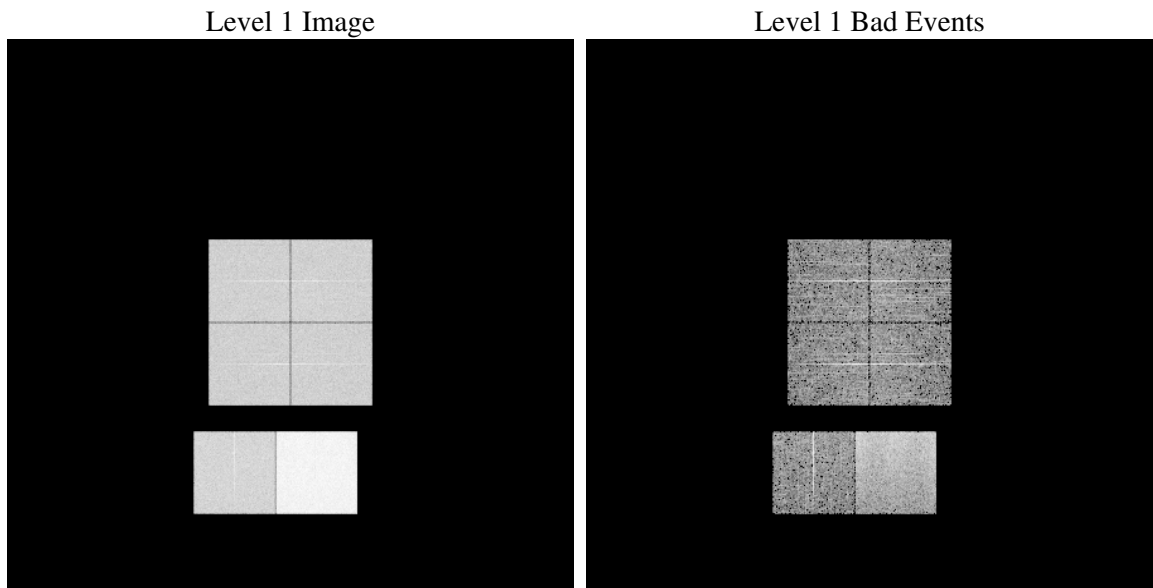
1 Front

seq_num	
obs_id	61700
title	ACIS-012367 diagnostics
observer	CHANDRA engineering request/realtime commanding
object	
dtcycle	0
cycle	P
ra_targ	0.0
dec_targ	0.0
ra_nom	100.02089318573
dec_nom	-28.021973484666
roll_nom	277.44358169305
revision	2
ontime	6154.9818777144
livetime	6077.0437910936
ontime0	2476.5024556667
ontime1	2470.0611764342
ontime2	2382.5942961723
ontime3	2382.4303354919
ontime6	2648.400256604
ontime7	6154.9818777144
l2events	1210382

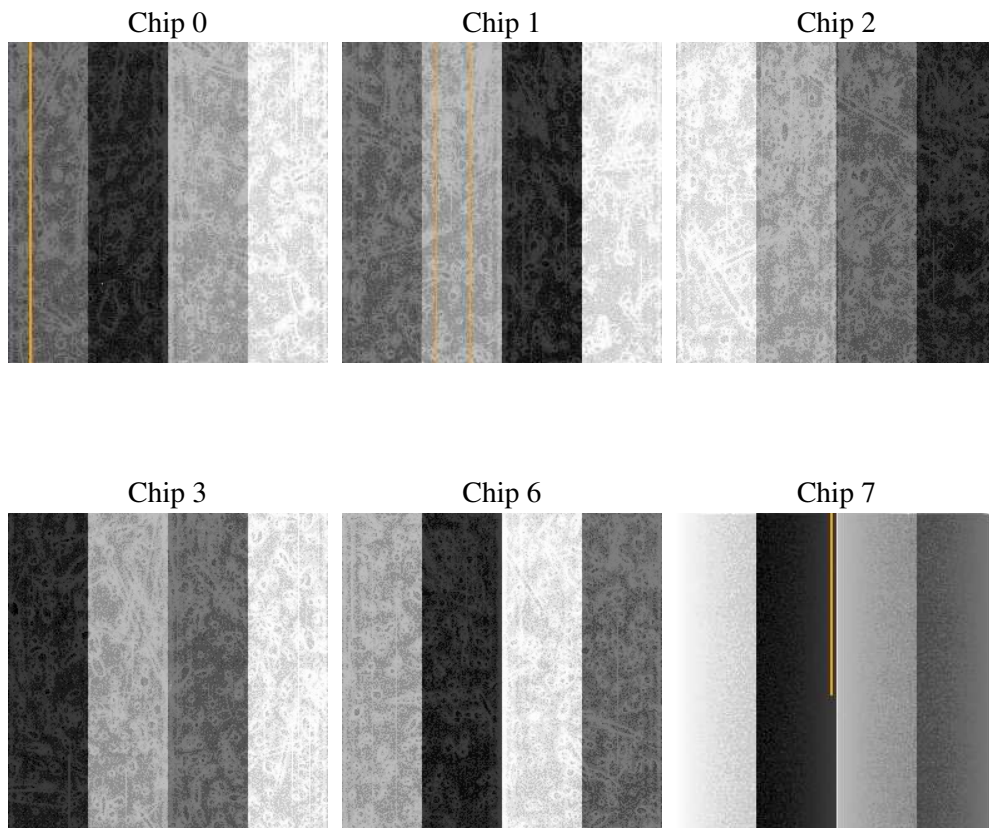
2 OBI

2.1 OBI

2.1.1 Images



2.1.2 Bias



2.1.3 Parameters

obi_num	0
ascdsver	7.6.9
caldbver	3.2.4
date	2006-11-16T02:37:08
revision	2

sched_exp_time	0.0
ontime	6157.9138624966
ontime0	2479.3934004456
ontime1	2472.9110812247
ontime2	2385.4031609595
ontime3	2385.4033602774
ontime6	2651.1680813879
ontime7	6157.9138624966
l1events	1411023

2.1.4 Events

	ccd 0	ccd 1	ccd 2	ccd 3	ccd 6	ccd 7
level 1 events	186233	186853	182183	182252	209110	464392
rejected events	19710	20900	20089	20403	21077	47010
rejected %	10%	11%	11%	11%	10%	10%

	ccd 0	ccd 1	ccd 2	ccd 3	ccd 6	ccd 7
grade 0 events	91774	91620	90218	90830	102473	79530
	49%	49%	49%	49%	49%	17%
grade 1 events	495	485	470	547	517	171
	0%	0%	0%	0%	0%	0%
grade 2 events	29802	29223	28714	28205	32677	123354
	16%	15%	15%	15%	15%	26%
grade 3 events	10693	10618	10276	10231	11641	32475
	5%	5%	5%	5%	5%	6%
grade 4 events	10410	10681	10318	10351	11639	31848
	5%	5%	5%	5%	5%	6%
grade 5 events	1435	1522	1353	1423	1669	6856
	0%	0%	0%	0%	0%	1%
grade 6 events	24028	24010	22781	22420	29840	150404
	12%	12%	12%	12%	14%	32%
grade 7 events	17596	18694	18053	18245	18654	39754
	9%	10%	9%	10%	8%	8%

2.2 Compared Parameters

Parameter	Planned	Actual	Parameter	Planned	Actual
Instrument	ACIS	ACIS	Obspar format version number	6	6
Detector	ACIS-012367	ACIS-012367	Obspar file type	PREDICTED	ACTUAL
Grating	NONE	NONE	Obspar update status	NONE	UPDATED
Data mode	FAINT	FAINT	On-chip summing requested	N	N
Observation mode	SECONDARY	SECONDARY	Subarray requested	NONE	NONE
Pointing RA	0	100.0208931857269	Alternating exposures requested	N	N
Pointing Dec	0	-28.02197348466611	Primary exposure time	3.2	3.2
Pointing Roll	0.0	277.4435816930476			
SIM focus pos (mm)	-0.782348	-0.6828225247311905			
SIM defocus (mm)	0	0.8505141146731063			
SIM translation stage pos (mm)	-233.592463	250.466033080201			
SIM translation stage offset (mm)	0	-0.01005468664627074			
Observation start time	101196348.307638	101196347.53918			
Observation start date	2001-03-17T06:05:48	2001-03-17T06:05:47			
Observation end time	101211155.45821	101211154.68975			
Observation end date	2001-03-17T10:12:35	2001-03-17T10:12:34			
Read mode	TIMED	TIMED			

2.3 Aspect

2.4 Star Slots

2.5 FID Slots

A Summary

A.1 Status

V&V Scientist	Jen Lauer
V&V Date (YYYY-MM-DD)	2006.11.16
V&V Edition	1
V&V Disposition and Status	OK
V&V Charge Time	6.15498187

A.2 Comments