

V&V Reference Report

L2 ASCDS Version : 8.4.5

Observation 61686 - L2 Version 3
Chandra X-Ray Center

L2 Processing Date : Sep 14 2012

Contents

1	Front	2
2	OBI	3
2.1	OBI	3
2.1.1	Images	3
2.1.2	Bias	3
2.1.3	Parameters	4
2.1.4	Events	4
2.2	Compared Parameters	5
2.3	Star Slots	6
2.4	FID Slots	6
A	Summary	7
A.1	Status	7
A.2	Comments	7

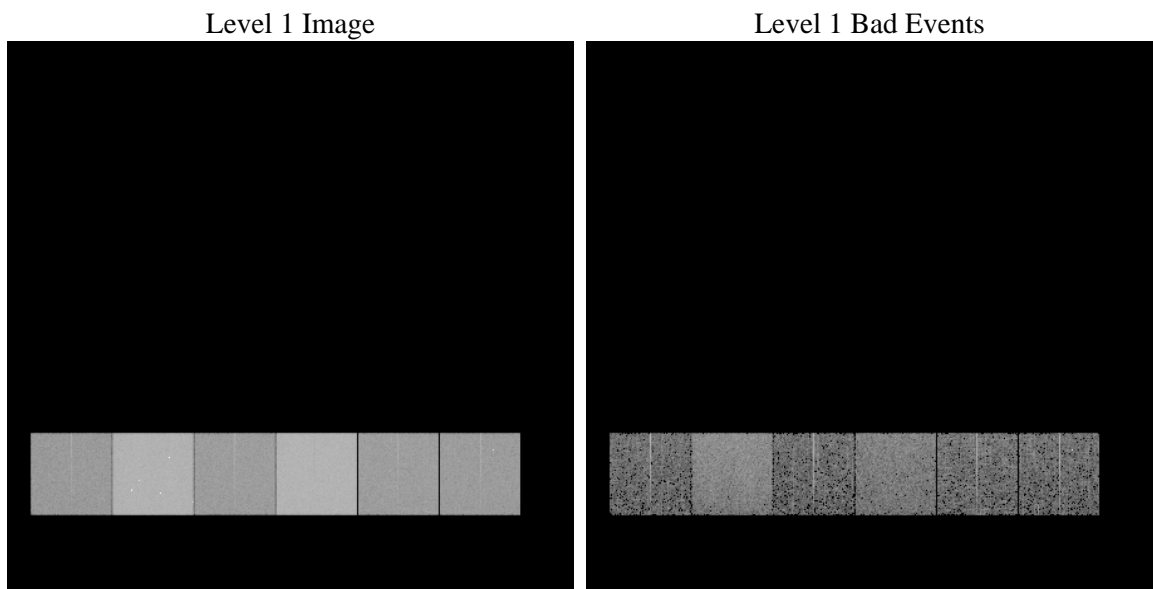
1 Front

seq_num	 	Sequence number
obs_id	61686	Observation id
title	ACIS-456789 diagnostics	Proposal title
observer	CHANDRA engineering request/realtime commanding	Principal investig
object	 	Source name
dtcycle	0	
cycle	P	events from which exps? Prim/Second/Both
ra_targ	0.0	Observer's specified target RA [deg]
dec_targ	0.0	Observer's specified target Dec [deg]
ra_nom	90.015264578797	Nominal RA [deg]
dec_nom	-32.025618326322	Nominal Dec [deg]
roll_nom	264.11648849676	Nominal Roll [deg]
revision	3	Processing version of data
ontime	5079.6012541056	Sum of GTIs [s]
livetime	5015.2802844574	Livetime [s]
ontime4	2096.4025838226	Sum of GTIs [s]
ontime5	5449.0706224442	Sum of GTIs [s]
ontime6	2213.0388240367	Sum of GTIs [s]
ontime7	5079.6012541056	Sum of GTIs [s]
ontime8	2255.2541746795	Sum of GTIs [s]
ontime9	2190.2283044308	Sum of GTIs [s]
l2events	1225390	Number of level 2 events

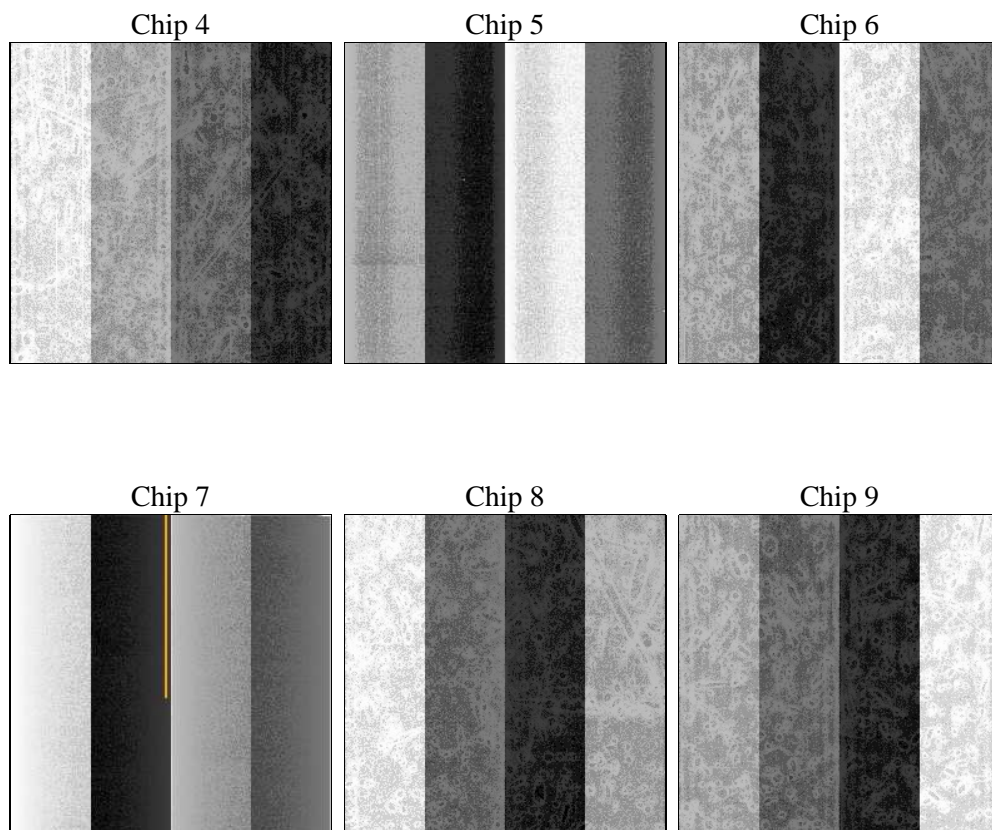
2 OBI

2.1 OBI

2.1.1 Images



2.1.2 Bias



2.1.3 Parameters

obi_num	0	Obi number	sched_exp_time	0.0	[s] Scheduled observation exposure time
ascdsver	8.4.5	Processing system revision	ontime	5079.6012541056	Sum of GTIs [s]
caldsver	4.5.1.1	 	ontime4	2096.4025838226	Sum of GTIs [s]
date	2012-09-14T20:53:30	Date and time of file creation	ontime5	5449.0706224442	Sum of GTIs [s]
revision	3	Processing version of data	ontime6	2213.0388240367	Sum of GTIs [s]
			ontime7	5079.6012541056	Sum of GTIs [s]
			ontime8	2255.2541746795	Sum of GTIs [s]
			ontime9	2190.2283044308	Sum of GTIs [s]
			l1events	1415097	Number of level 1 events

2.1.4 Events

	ccd 4	ccd 5	ccd 6	ccd 7	ccd 8	ccd 9		ccd 4	ccd 5	ccd 6	ccd 7	ccd 8	ccd 9
level 1 events	153837	368745	171980	377907	176751	165877	grade 0 events	77383	88248	85413	90168	87547	81828
rejected events	17219	37240	16463	26122	18761	17578		50%	23%	49%	23%	49%	49%
rejected %	11%	10%	9%	6%	10%	10%	grade 1 events	386	333	430	236	459	1070
								0%	0%	0%	0%	0%	0%
							grade 2 events	24022	113285	27055	78704	27849	26018
								15%	30%	15%	20%	15%	15%
							grade 3 events	8600	22484	9426	35924	10067	9244
								5%	6%	5%	9%	5%	5%
							grade 4 events	8441	22247	9544	35710	9929	9158
								5%	6%	5%	9%	5%	5%
							grade 5 events	1222	7456	1325	5608	1411	1365
								0%	2%	0%	1%	0%	0%
							grade 6 events	18172	85426	24079	111531	22598	22051
								11%	23%	14%	29%	12%	13%
							grade 7 events	15611	29266	14708	20026	16891	15143
								10%	7%	8%	5%	9%	9%

2.2 Compared Parameters

Parameter	Planned	Actual	Parameter	Planned	Actual
Instrument	ACIS	ACIS	Obspar format version number	7	7
Detector	ACIS-456789	ACIS-456789	Obspar file type	PREDICTED	ACTUAL
Grating	NONE	NONE	Obspar update status	NONE	UPDATED
Data mode	FAINT	FAINT	On-chip summing requested	N	N
Observation mode	SECONDARY	SECONDARY	Subarray requested	NONE	NONE
[deg] Pointing RA	0	90.01526457879697	Alternating exposures requested	N	N
[deg] Pointing Dec	0	-32.02561832632178	[s] Primary exposure time	0.000000	3.2
[deg] Pointing Roll	0.0	264.116488496757			
[mm] SIM focus pos	-0.684267	-0.6828225247311905			
[mm] SIM defocus	0	0.8505141146731063			
[mm] SIM translation stage pos	-190.132523	250.466033080201			
[mm] SIM translation stage offset	0	-0.01005468664627074			
[s] Observation start time (MET)	102111357.643	102111356.8746			
Observation start date	2001-03-27T20:15:58	2001-03-27T20:15:56			
[s] Observation end time (MET)	102154985.745	102154984.9763			
Observation end date	2001-03-28T08:23:06	2001-03-28T08:23:04			
Read mode	TIMED	TIMED			

2.3 Star Slots

2.4 FID Slots

A Summary

A.1 Status

V&V Scientist	Beth Sundheim
V&V Date (YYYY-MM-DD)	2012.09.19
V&V Edition	1
V&V Disposition and Status	OK
V&V Charge Time	5.0796012541056

A.2 Comments