

# V&V Reference Report

## L2 ASCDS Version : 7.6.9

Observation 61686 - L2 Version 001  
Chandra X-Ray Center

L2 Processing Date : Nov 15 2006

## Contents

<b>1</b>	<b>Front</b>	<b>2</b>
<b>2</b>	<b>OBI</b>	<b>3</b>
2.1	OBI . . . . .	3
2.1.1	Images . . . . .	3
2.1.2	Bias . . . . .	3
2.1.3	Parameters . . . . .	4
2.1.4	Events . . . . .	4
2.2	Compared Parameters . . . . .	5
2.3	Aspect . . . . .	6
2.4	Star Slots . . . . .	8
2.5	FID Slots . . . . .	8
<b>A</b>	<b>Summary</b>	<b>9</b>
A.1	Status . . . . .	9
A.2	Comments . . . . .	9

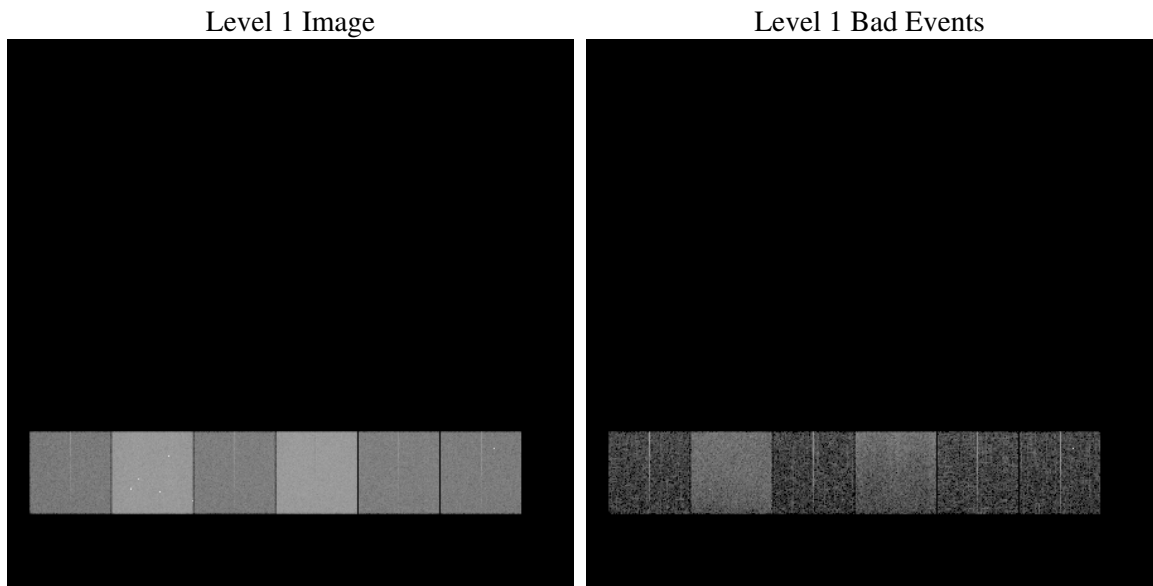
# 1 Front

seq_num	&#160
obs_id	61686
title	ACIS-456789 diagnostics
observer	CHANDRA engineering request/realtime commanding
object	&#160
dtcycle	0
cycle	P
ra_targ	0.0
dec_targ	0.0
ra_nom	90.015264578012
dec_nom	-32.025618330991
roll_nom	264.11648849687
revision	2
ontime	5079.6012541205
livetime	5015.2802844721
ontime4	2094.8025838286
ontime5	5449.0706224591
ontime6	2211.4388240427
ontime7	5079.6012541205
ontime8	2253.6541746855
ontime9	2188.6283044368
l2events	1205311

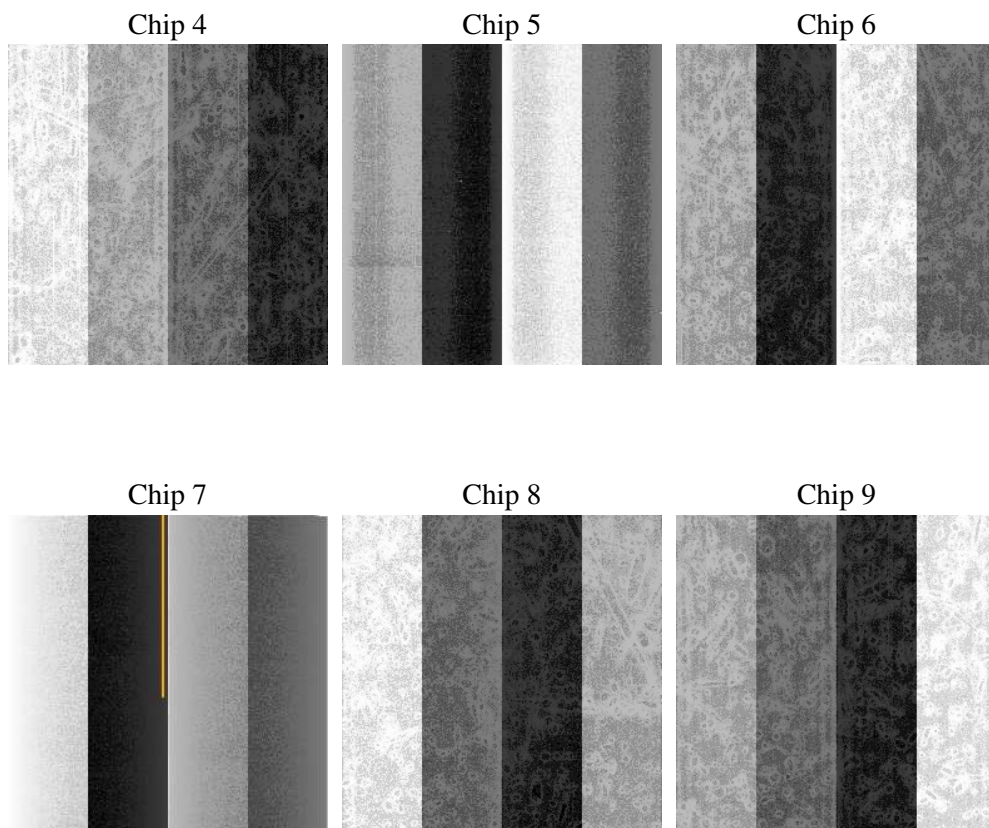
## 2 OBI

### 2.1 OBI

#### 2.1.1 Images



#### 2.1.2 Bias



### 2.1.3 Parameters

obi_num	0
ascdsver	7.6.9
caldsver	3.2.4
date	2006-11-16T03:09:12
revision	2

sched_exp_time	0.0
ontime	5081.9148882627
ontime4	2096.9509106129
ontime5	5451.3842566013
ontime6	2213.6281908303
ontime7	5081.9148882627
ontime8	2255.7614614666
ontime9	2190.9407912195
l1events	1415097

### 2.1.4 Events

	ccd 4	ccd 5	ccd 6	ccd 7	ccd 8	ccd 9
level 1 events	153837	368745	171980	377907	176751	165877
rejected events	17428	46778	16674	36360	18995	17773
rejected %	11%	12%	9%	9%	10%	10%

	ccd 4	ccd 5	ccd 6	ccd 7	ccd 8	ccd 9
grade 0 events	77384	46341	85413	65648	87548	81828
	50%	12%	49%	17%	49%	49%
grade 1 events	386	181	430	162	459	1070
	0%	0%	0%	0%	0%	0%
grade 2 events	24021	151389	27055	101355	27848	26018
	15%	41%	15%	26%	15%	15%
grade 3 events	8600	11915	9426	26578	10068	9243
	5%	3%	5%	7%	5%	5%
grade 4 events	8441	11803	9544	26085	9929	9158
	5%	3%	5%	6%	5%	5%
grade 5 events	1222	5787	1325	5394	1411	1365
	0%	1%	0%	1%	0%	0%
grade 6 events	18172	100706	24080	122117	22597	22052
	11%	27%	14%	32%	12%	13%
grade 7 events	15611	40623	14707	30568	16891	15143
	10%	11%	8%	8%	9%	9%

## 2.2 Compared Parameters

Parameter	Planned	Actual	Parameter	Planned	Actual
Instrument	ACIS	ACIS	Obspar format version number	6	6
Detector	ACIS-456789	ACIS-456789	Obspar file type	PREDICTED	ACTUAL
Grating	NONE	NONE	Obspar update status	NONE	UPDATED
Data mode	FAINT	FAINT	On-chip summing requested	N	N
Observation mode	SECONDARY	SECONDARY	Subarray requested	NONE	NONE
Pointing RA	0	90.01526457801151	Alternating exposures requested	N	N
Pointing Dec	0	-32.02561833099103	Primary exposure time	0.000000	3.2
Pointing Roll	0.0	264.1164884968745			
SIM focus pos (mm)	-0.684267	-0.6828225247311905			
SIM defocus (mm)	0	0.8505141146731063			
SIM translation stage pos (mm)	-190.132523	250.466033080201			
SIM translation stage offset (mm)	0	-0.01005468664627074			
Observation start time	102111357.643	102111356.8746			
Observation start date	2001-03-27T20:15:58	2001-03-27T20:15:56			
Observation end time	102154985.745	102154984.9763			
Observation end date	2001-03-28T08:23:06	2001-03-28T08:23:04			
Read mode	TIMED	TIMED			

## 2.3 Aspect



## **2.4 Star Slots**

## **2.5 FID Slots**



## A Summary

### A.1 Status

V&V Scientist	Jen Lauer
V&V Date (YYYY-MM-DD)	2006.11.16
V&V Edition	1
V&V Disposition and Status	OK
V&V Charge Time	5.07960125

### A.2 Comments