

V&V Reference Report

L2 ASCDS Version : 7.6.9

Observation 61680 - L2 Version 001
Chandra X-Ray Center

L2 Processing Date : Nov 13 2006

Contents

1	Front	2
2	OBI	3
2.1	OBI	3
2.1.1	Images	3
2.1.2	Bias	3
2.1.3	Parameters	4
2.1.4	Events	4
2.2	Compared Parameters	5
2.3	Aspect	6
2.4	Star Slots	8
2.5	FID Slots	8
A	Summary	9
A.1	Status	9
A.2	Comments	9

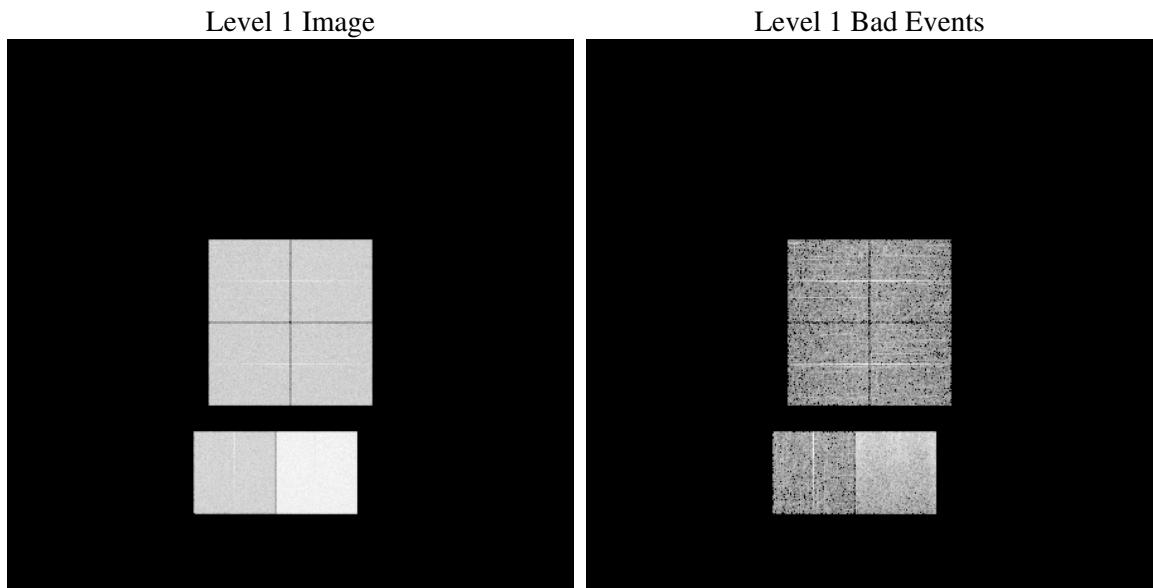
1 Front

seq_num	
obs_id	61680
title	ACIS-012367 diagnostics
observer	CHANDRA engineering request/realtime commanding
object	
dtcycle	0
cycle	P
ra_targ	0.0
dec_targ	0.0
ra_nom	90.012943803895
dec_nom	-32.026521219246
roll_nom	259.77515162714
revision	2
ontime	5990.2661956847
livetime	5914.4138382096
ontime0	2467.3079064488
ontime1	2532.3159348816
ontime2	2409.1976644546
ontime3	2418.6923763603
ontime6	2622.8772879392
ontime7	5990.2661956847
l2events	1217617

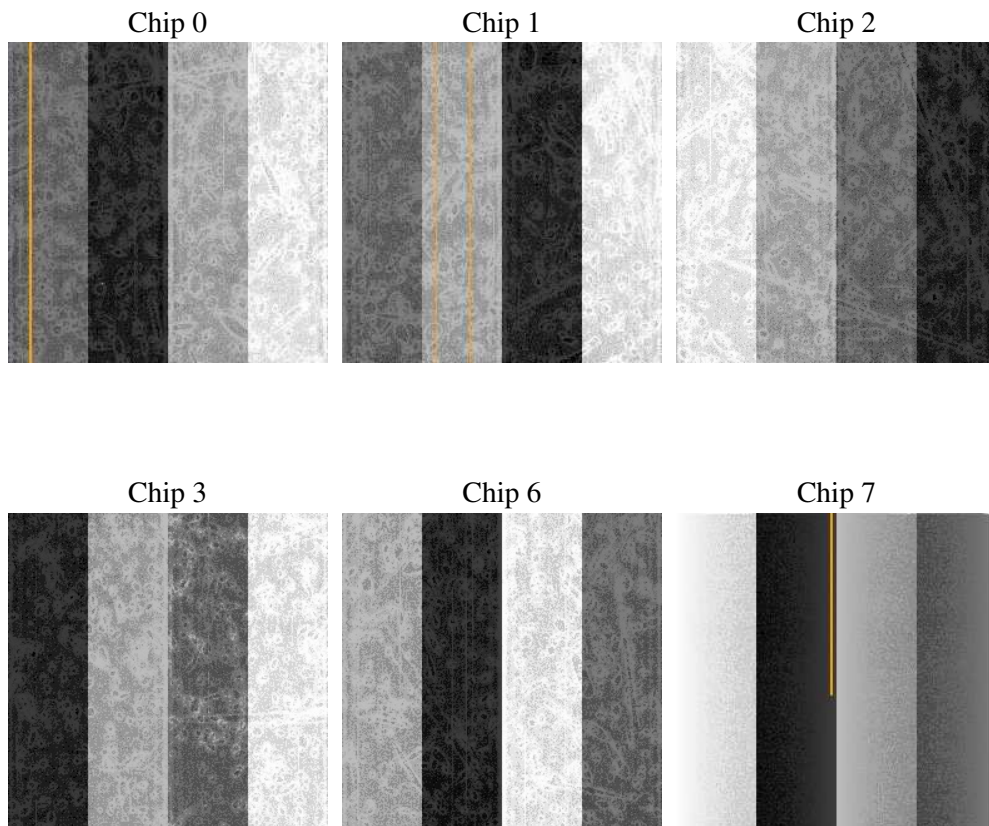
2 OBI

2.1 OBI

2.1.1 Images



2.1.2 Bias



2.1.3 Parameters

obi_num	0
ascdsver	7.6.9
caldbver	3.2.4
date	2006-11-13T13:48:32
revision	2

sched_exp_time	0.0
ontime	5992.6288798302
ontime0	2469.6705905944
ontime1	2534.4911313504
ontime2	2411.3318209201
ontime3	2421.0550605059
ontime6	2625.2399720848
ontime7	5992.6288798302
l1events	1412285

2.1.4 Events

	ccd 0	ccd 1	ccd 2	ccd 3	ccd 6	ccd 7
level 1 events	186458	192775	184485	186511	208522	453534
rejected events	19352	19466	19153	19851	20628	44321
rejected %	10%	10%	10%	10%	9%	9%

	ccd 0	ccd 1	ccd 2	ccd 3	ccd 6	ccd 7
grade 0 events	92307	95693	91836	93087	102038	79041
	49%	49%	49%	49%	48%	17%
grade 1 events	512	482	507	513	525	174
	0%	0%	0%	0%	0%	0%
grade 2 events	29595	30174	28998	29154	32763	121616
	15%	15%	15%	15%	15%	26%
grade 3 events	10615	11033	10405	10811	11597	31730
	5%	5%	5%	5%	5%	6%
grade 4 events	10427	11199	10287	10379	11632	31097
	5%	5%	5%	5%	5%	6%
grade 5 events	1447	1428	1404	1447	1640	6406
	0%	0%	0%	0%	0%	1%
grade 6 events	24398	25430	24012	23457	30101	145967
	13%	13%	13%	12%	14%	32%
grade 7 events	17157	17336	17036	17663	18226	37503
	9%	8%	9%	9%	8%	8%

2.2 Compared Parameters

Parameter	Planned	Actual	Parameter	Planned	Actual
Instrument	ACIS	ACIS	Obspar format version number	6	6
Detector	ACIS-012367	ACIS-012367	Obspar file type	PREDICTED	ACTUAL
Grating	NONE	NONE	Obspar update status	NONE	UPDATED
Data mode	FAINT	FAINT	On-chip summing requested	N	N
Observation mode	SECONDARY	SECONDARY	Subarray requested	NONE	NONE
Pointing RA	0	90.01294380389518	Alternating exposures requested	N	N
Pointing Dec	0	-32.02652121924581	Primary exposure time	0.000000	3.2
Pointing Roll	0.0	259.7751516271361			
SIM focus pos (mm)	-0.782348	-0.6828225247311905			
SIM defocus (mm)	0	0.8505141146731063			
SIM translation stage pos (mm)	-233.592463	250.466033080201			
SIM translation stage offset (mm)	0	-0.01005468664627074			
Observation start time	102567654.861	102567654.09227			
Observation start date	2001-04-02T03:00:55	2001-04-02T03:00:54			
Observation end time	102580100.411	102580099.64276			
Observation end date	2001-04-02T06:28:20	2001-04-02T06:28:19			
Read mode	TIMED	TIMED			

2.3 Aspect

2.4 Star Slots

2.5 FID Slots

A Summary

A.1 Status

V&V Scientist	Beth Sundheim
V&V Date (YYYY-MM-DD)	2006.11.13
V&V Edition	1
V&V Disposition and Status	OK
V&V Charge Time	5.99026619

A.2 Comments