

V&V Reference Report

L2 ASCDS Version : 7.6.9

Observation 61669 - L2 Version 001
Chandra X-Ray Center

L2 Processing Date : Nov 13 2006

Contents

1	Front	2
2	OBI	3
2.1	OBI	3
2.1.1	Images	3
2.1.2	Bias	3
2.1.3	Parameters	4
2.1.4	Events	4
2.2	Compared Parameters	5
2.3	Aspect	6
2.4	Star Slots	8
2.5	FID Slots	8
A	Summary	9
A.1	Status	9
A.2	Comments	9

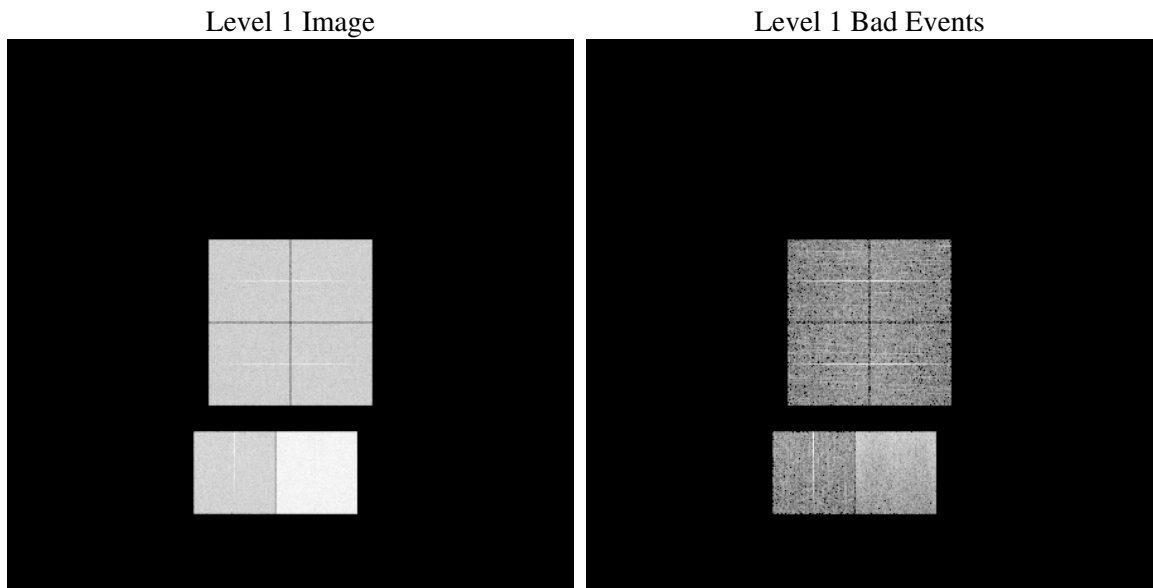
1 Front

seq_num	
obs_id	61669
title	ACIS-012367 diagnostics
observer	CHANDRA engineering request/realtime commanding
object	
dtcycle	0
cycle	P
ra_targ	0.0
dec_targ	0.0
ra_nom	184.98286706232
dec_nom	24.97589189829
roll_nom	204.56536776283
revision	2
ontime	7082.2492608726
livetime	6992.5695563129
ontime0	2648.6192061156
ontime1	2762.0965062529
ontime2	2580.6397651881
ontime3	2638.814026013
ontime6	2882.0967668742
ontime7	7082.2492608726
l2events	1322930

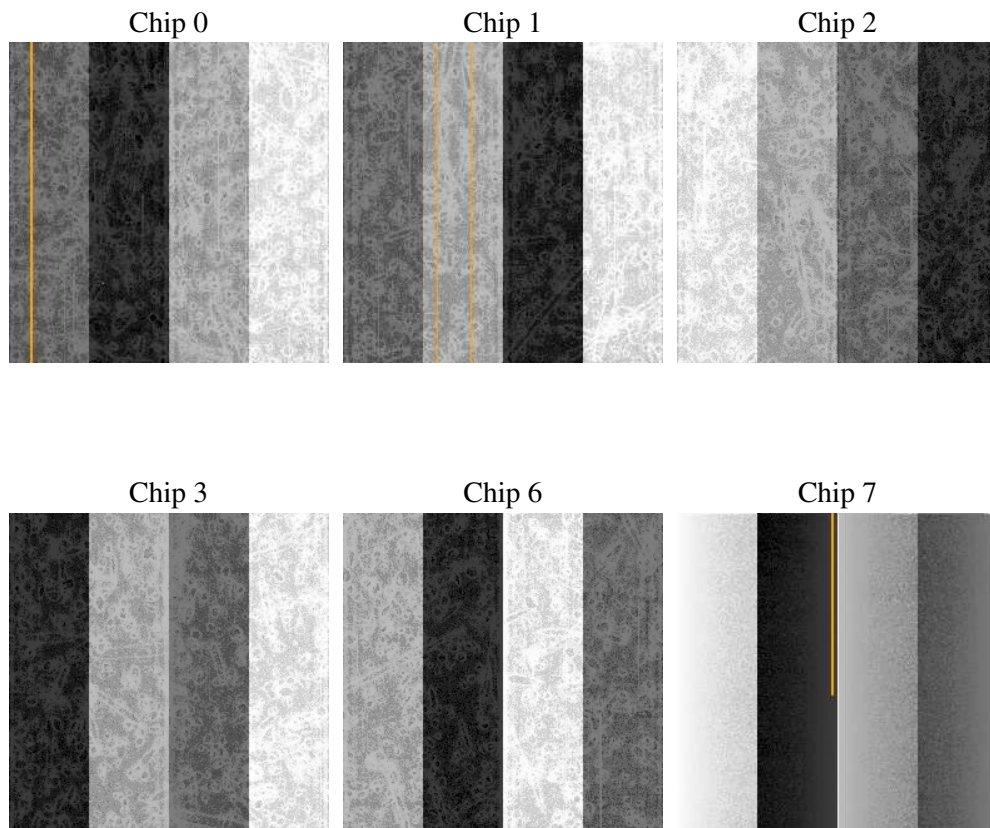
2 OBI

2.1 OBI

2.1.1 Images



2.1.2 Bias



2.1.3 Parameters

obi_num	0
ascdsver	7.6.9
caldsver	3.2.4
date	2006-11-13T17:06:38
revision	2

sched_exp_time	0.0
ontime	7084.8396248221
ontime0	2651.1685300618
ontime1	2764.6047902107
ontime2	2583.1070091426
ontime3	2641.4454299659
ontime6	2884.5229708254
ontime7	7084.8396248221
l1events	1549486

2.1.4 Events

	ccd 0	ccd 1	ccd 2	ccd 3	ccd 6	ccd 7
level 1 events	197304	205295	196376	200832	225691	523988
rejected events	22232	23095	24149	23802	25843	51880
rejected %	11%	11%	12%	11%	11%	9%

	ccd 0	ccd 1	ccd 2	ccd 3	ccd 6	ccd 7
grade 0 events	96198	100403	95867	98509	108875	89097
	48%	48%	48%	49%	48%	17%
grade 1 events	598	558	565	582	612	235
	0%	0%	0%	0%	0%	0%
grade 2 events	31126	32241	30286	31191	34529	140881
	15%	15%	15%	15%	15%	26%
grade 3 events	11271	11589	10824	11291	12335	36027
	5%	5%	5%	5%	5%	6%
grade 4 events	11099	11629	10822	11313	12367	35593
	5%	5%	5%	5%	5%	6%
grade 5 events	1537	1590	1550	1548	1766	7526
	0%	0%	0%	0%	0%	1%
grade 6 events	25595	26556	24638	24957	31986	170724
	12%	12%	12%	12%	14%	32%
grade 7 events	19880	20729	21824	21441	23221	43905
	10%	10%	11%	10%	10%	8%

2.2 Compared Parameters

Parameter	Planned	Actual	Parameter	Planned	Actual
Instrument	ACIS	ACIS	Obspar format version number	6	6
Detector	ACIS-012367	ACIS-012367	Obspar file type	PREDICTED	ACTUAL
Grating	NONE	NONE	Obspar update status	NONE	UPDATED
Data mode	FAINT	FAINT	On-chip summing requested	N	N
Observation mode	SECONDARY	SECONDARY	Subarray requested	NONE	NONE
Pointing RA	0	184.9828670623178	Alternating exposures requested	N	N
Pointing Dec	0	24.97589189829021	Primary exposure time	3.2	3.2
Pointing Roll	0.0	204.5653677628333			
SIM focus pos (mm)	-0.782348	-0.6828225247311905			
SIM defocus (mm)	0	0.8505141146731063			
SIM translation stage pos (mm)	-233.592463	250.466033080201			
SIM translation stage offset (mm)	0	-0.01005468664627074			
Observation start time	103299683.239092	103299682.47063			
Observation start date	2001-04-10T14:21:23	2001-04-10T14:21:22			
Observation end time	103312065.239571	103312064.47111			
Observation end date	2001-04-10T17:47:45	2001-04-10T17:47:44			
Read mode	TIMED	TIMED			

2.3 Aspect

2.4 Star Slots

2.5 FID Slots

A Summary

A.1 Status

V&V Scientist	Jen Lauer
V&V Date (YYYY-MM-DD)	2006.11.13
V&V Edition	1
V&V Disposition and Status	OK
V&V Charge Time	7.08224926

A.2 Comments