

V&V Reference Report

L2 ASCDS Version : 7.6.9

Observation 61666 - L2 Version 001
Chandra X-Ray Center

L2 Processing Date : Nov 14 2006

Contents

| | | |
|----------|-------------------------------|----------|
| 1 | Front | 2 |
| 2 | OBI | 3 |
| 2.1 | OBI | 3 |
| 2.1.1 | Images | 3 |
| 2.1.2 | Bias | 3 |
| 2.1.3 | Parameters | 4 |
| 2.1.4 | Events | 4 |
| 2.2 | Compared Parameters | 5 |
| 2.3 | Aspect | 6 |
| 2.4 | Star Slots | 8 |
| 2.5 | FID Slots | 8 |
| A | Summary | 9 |
| A.1 | Status | 9 |
| A.2 | Comments | 9 |

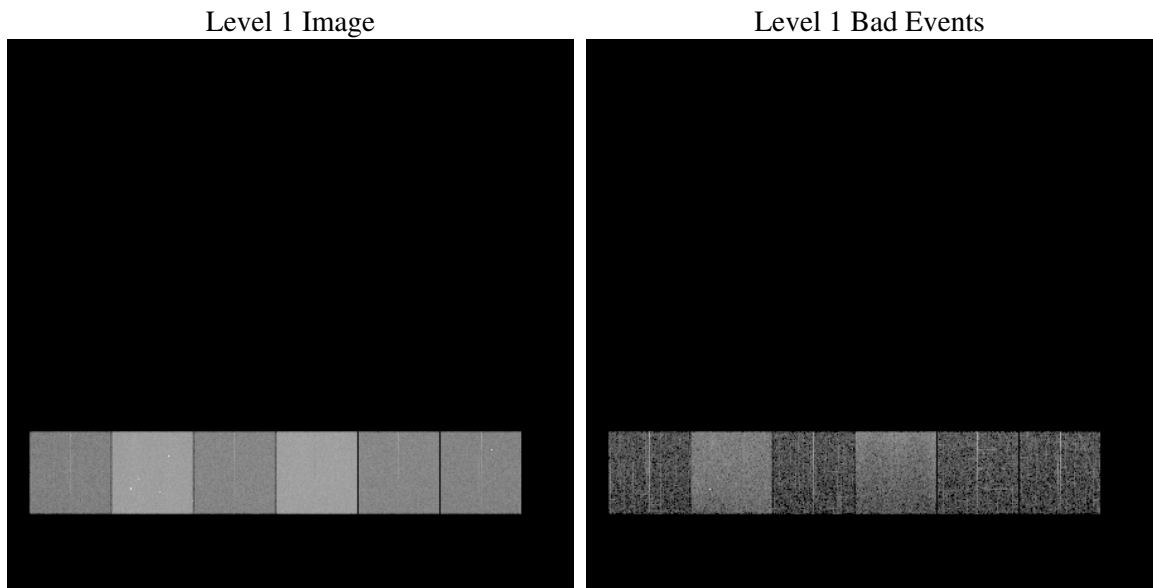
1 Front

| | |
|----------|---|
| seq_num | |
| obs_id | 61666 |
| title | ACIS-456789 diagnostics |
| observer | CHANDRA engineering request/realtime commanding |
| object | |
| dtcycle | 0 |
| cycle | P |
| ra_targ | 0.0 |
| dec_targ | 0.0 |
| ra_nom | 170.03147139781 |
| dec_nom | -35.012560307607 |
| roll_nom | 301.35492353302 |
| revision | 2 |
| ontime | 5041.9040197134 |
| livetime | 4978.0603951457 |
| ontime4 | 2131.6017987132 |
| ontime5 | 5417.897197932 |
| ontime6 | 2313.0587989092 |
| ontime7 | 5041.9040197134 |
| ontime8 | 2342.3103384972 |
| ontime9 | 2228.6689580232 |
| l2events | 1229319 |

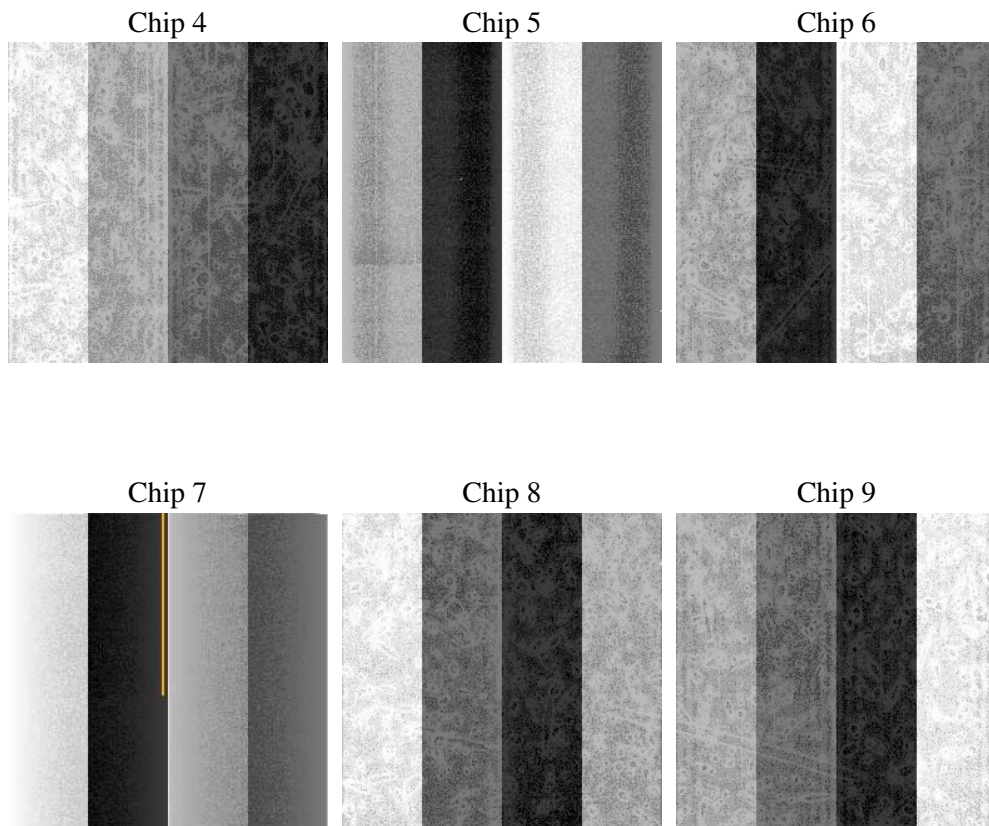
2 OBI

2.1 OBI

2.1.1 Images



2.1.2 Bias



2.1.3 Parameters

| | |
|----------|---------------------|
| obi_num | 1 |
| ascdsver | 7.6.9 |
| caldsver | 3.2.4 |
| date | 2006-11-14T20:17:03 |
| revision | 2 |

| | |
|----------------|-----------------|
| sched_exp_time | 0.0 |
| ontime | 5043.0277618617 |
| ontime4 | 2132.6024208665 |
| ontime5 | 5418.979900077 |
| ontime6 | 2314.1004610658 |
| ontime7 | 5043.0277618617 |
| ontime8 | 2343.2699206471 |
| ontime9 | 2229.8337401748 |
| l1events | 1432557 |

2.1.4 Events

| | ccd 4 | ccd 5 | ccd 6 | ccd 7 | ccd 8 | ccd 9 |
|-----------------|--------|--------|--------|--------|--------|--------|
| level 1 events | 158344 | 362277 | 181792 | 374302 | 185427 | 170415 |
| rejected events | 17199 | 44296 | 16706 | 33418 | 17858 | 16786 |
| rejected % | 10% | 12% | 9% | 8% | 9% | 9% |

| | ccd 4 | ccd 5 | ccd 6 | ccd 7 | ccd 8 | ccd 9 |
|----------------|-------|--------|-------|--------|-------|-------|
| grade 0 events | 79814 | 41693 | 89549 | 66610 | 91690 | 84094 |
| | 50% | 11% | 49% | 17% | 49% | 49% |
| grade 1 events | 422 | 88 | 428 | 138 | 438 | 413 |
| | 0% | 0% | 0% | 0% | 0% | 0% |
| grade 2 events | 25187 | 152225 | 28323 | 100674 | 29606 | 27081 |
| | 15% | 42% | 15% | 26% | 15% | 15% |
| grade 3 events | 8365 | 11194 | 10302 | 26381 | 10647 | 9435 |
| | 5% | 3% | 5% | 7% | 5% | 5% |
| grade 4 events | 8610 | 11208 | 10117 | 25985 | 10520 | 9454 |
| | 5% | 3% | 5% | 6% | 5% | 5% |
| grade 5 events | 1187 | 5353 | 1467 | 4971 | 1427 | 1327 |
| | 0% | 1% | 0% | 1% | 0% | 0% |
| grade 6 events | 19169 | 101661 | 26795 | 121234 | 25106 | 23565 |
| | 12% | 28% | 14% | 32% | 13% | 13% |
| grade 7 events | 15590 | 38855 | 14811 | 28309 | 15993 | 15046 |
| | 9% | 10% | 8% | 7% | 8% | 8% |

2.2 Compared Parameters

| Parameter | Planned | Actual | Parameter | Planned | Actual |
|-----------------------------------|---------------------|----------------------|---------------------------------|-----------|---------|
| Instrument | ACIS | ACIS | Obspar format version number | 6 | 6 |
| Detector | ACIS-456789 | ACIS-456789 | Obspar file type | PREDICTED | ACTUAL |
| Grating | NONE | NONE | Obspar update status | NONE | UPDATED |
| Data mode | FAINT | FAINT | On-chip summing requested | N | N |
| Observation mode | SECONDARY | SECONDARY | Subarray requested | NONE | NONE |
| Pointing RA | 0 | 170.0314713978088 | Alternating exposures requested | N | N |
| Pointing Dec | 0 | -35.01256030760678 | Primary exposure time | 3.2 | 3.2 |
| Pointing Roll | 0.0 | 301.35492353302 | | | |
| SIM focus pos (mm) | -0.684267 | -0.6828225247311905 | | | |
| SIM defocus (mm) | 0 | 0.8505141146731063 | | | |
| SIM translation stage pos (mm) | -190.132523 | 250.466033080201 | | | |
| SIM translation stage offset (mm) | 0 | -0.01005468664627074 | | | |
| Observation start time | 103709960.004986 | 103709959.23652 | | | |
| Observation start date | 2001-04-15T08:19:20 | 2001-04-15T08:19:19 | | | |
| Observation end time | 103757470.806827 | 103757470.03836 | | | |
| Observation end date | 2001-04-15T21:31:11 | 2001-04-15T21:31:10 | | | |
| Read mode | TIMED | TIMED | | | |

2.3 Aspect

2.4 Star Slots

2.5 FID Slots

A Summary

A.1 Status

| | |
|----------------------------|------------|
| V&V Scientist | Jen Lauer |
| V&V Date (YYYY-MM-DD) | 2006.11.15 |
| V&V Edition | 1 |
| V&V Disposition and Status | OK |
| V&V Charge Time | 5.04190401 |

A.2 Comments