

V&V Reference Report

L2 ASCDS Version : 8.4.5

Observation 61664 - L2 Version 3
Chandra X-Ray Center

L2 Processing Date : Sep 15 2012

Contents

1	Front	2
2	OBI	3
2.1	OBI	3
2.1.1	Images	3
2.1.2	Bias	3
2.1.3	Parameters	4
2.1.4	Events	4
2.2	Compared Parameters	5
2.3	Star Slots	6
2.4	FID Slots	6
A	Summary	7
A.1	Status	7
A.2	Comments	7

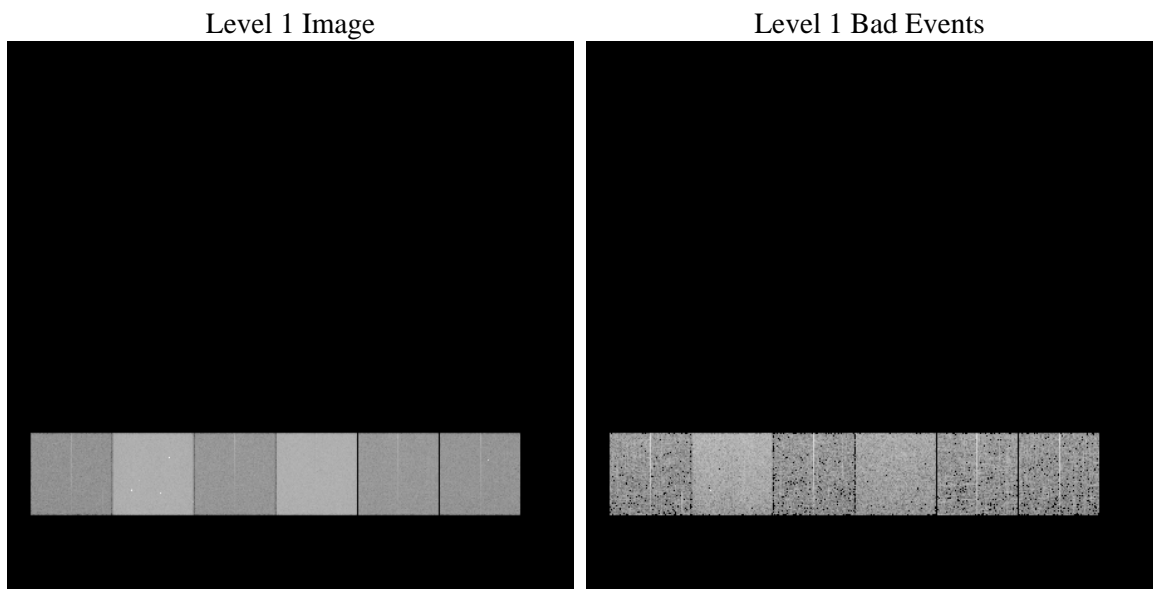
1 Front

seq_num	 	Sequence number
obs_id	61664	Observation id
title	ACIS-456789 diagnostics	Proposal title
observer	CHANDRA engineering request/realtime commanding	Principal investig
object	 	Source name
dtcycle	0	
cycle	P	events from which exps? Prim/Second/Both
ra_targ	0.0	Observer's specified target RA [deg]
dec_targ	0.0	Observer's specified target Dec [deg]
ra_nom	89.505135424725	Nominal RA [deg]
dec_nom	-32.028335644107	Nominal Dec [deg]
roll_nom	246.08308962372	Nominal Roll [deg]
revision	3	Processing version of data
ontime	5409.1555048078	Sum of GTIs [s]
livetime	5340.6615208035	Livetime [s]
ontime4	1886.1872832179	Sum of GTIs [s]
ontime5	5817.5166538954	Sum of GTIs [s]
ontime6	2118.5964660048	Sum of GTIs [s]
ontime7	5409.1555048078	Sum of GTIs [s]
ontime8	2206.1865560412	Sum of GTIs [s]
ontime9	2053.6523766965	Sum of GTIs [s]
l2events	1220417	Number of level 2 events

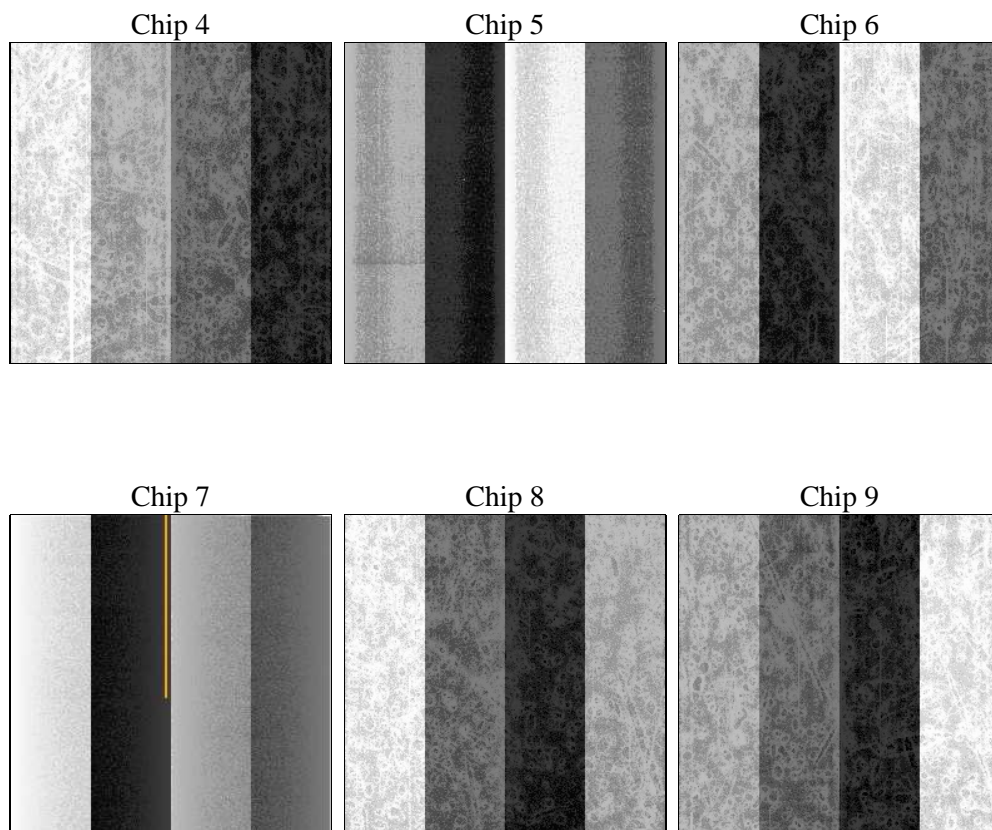
2 OBI

2.1 OBI

2.1.1 Images



2.1.2 Bias



2.1.3 Parameters

obi_num	2	Obi number	sched_exp_time	0.0	[s] Scheduled observation exposure time
ascdsver	8.4.5	Processing system revision	ontime	5409.1555048078	Sum of GTIs [s]
caldsver	4.5.1.1	 	ontime4	1886.1872832179	Sum of GTIs [s]
date	2012-09-15T16:32:10	Date and time of file creation	ontime5	5817.5166538954	Sum of GTIs [s]
revision	3	Processing version of data	ontime6	2118.5964660048	Sum of GTIs [s]
			ontime7	5409.1555048078	Sum of GTIs [s]
			ontime8	2206.1865560412	Sum of GTIs [s]
			ontime9	2053.6523766965	Sum of GTIs [s]
			l1events	1426505	Number of level 1 events

2.1.4 Events

	ccd 4	ccd 5	ccd 6	ccd 7	ccd 8	ccd 9		ccd 4	ccd 5	ccd 6	ccd 7	ccd 8	ccd 9
level 1 events	139802	392429	166043	399310	174267	154654	grade 0 events	67024	93602	79477	94921	83704	74436
rejected events	20936	39618	20005	28285	22236	19460		47%	23%	47%	23%	48%	48%
rejected %	14%	10%	12%	7%	12%	12%	grade 1 events	436	456	482	265	446	475
								0%	0%	0%	0%	0%	0%
							grade 2 events	21234	119893	25500	82659	26727	23528
								15%	30%	15%	20%	15%	15%
							grade 3 events	7347	24246	8879	37687	9697	8386
								5%	6%	5%	9%	5%	5%
							grade 4 events	7442	24054	9046	37744	9772	8367
								5%	6%	5%	9%	5%	5%
							grade 5 events	1117	7875	1384	6073	1560	1349
								0%	2%	0%	1%	0%	0%
							grade 6 events	16021	91202	23136	118231	22131	20477
								11%	23%	13%	29%	12%	13%
							grade 7 events	19181	31101	18139	21730	20230	17636
								13%	7%	10%	5%	11%	11%

2.2 Compared Parameters

Parameter	Planned	Actual
Instrument	ACIS	ACIS
Detector	ACIS-456789	ACIS-456789
Grating	NONE	NONE
Data mode	FAINT	FAINT
Observation mode	SECONDARY	SECONDARY
[deg] Pointing RA	0	89.50513542472484
[deg] Pointing Dec	0	-32.02833564410727
[deg] Pointing Roll	0.0	246.0830896237204
[mm] SIM focus pos	-0.684267	-0.6828225247311905
[mm] SIM defocus	0	0.8505141146731063
[mm] SIM translation stage pos	-190.132523	250.466033080201
[mm] SIM translation stage offset	0	-0.01005468664627074
[s] Observation start time (MET)	103939166.413869	103939165.6454
Observation start date	2001-04-17T23:59:26	2001-04-17T23:59:25
[s] Observation end time (MET)	103986396.365699	103986395.59723
Observation end date	2001-04-18T13:06:36	2001-04-18T13:06:35
Read mode	TIMED	TIMED

Parameter	Planned	Actual
Obspar format version number	7	7
Obspar file type	PREDICTED	ACTUAL
Obspar update status	NONE	UPDATED
On-chip summing requested	N	N
Subarray requested	NONE	NONE
Alternating exposures requested	N	N
[s] Primary exposure time	3.2	3.2

2.3 Star Slots

2.4 FID Slots

A Summary

A.1 Status

V&V Scientist	Jen Lauer
V&V Date (YYYY-MM-DD)	2012.09.18
V&V Edition	1
V&V Disposition and Status	OK
V&V Charge Time	5.4091555048078

A.2 Comments