

V&V Reference Report

L2 ASCDS Version : 7.6.9

Observation 61664 - L2 Version 001
Chandra X-Ray Center

L2 Processing Date : Nov 14 2006

Contents

1	Front	2
2	OBI	3
2.1	OBI	3
2.1.1	Images	3
2.1.2	Bias	3
2.1.3	Parameters	4
2.1.4	Events	4
2.2	Compared Parameters	5
2.3	Aspect	6
2.4	Star Slots	8
2.5	FID Slots	8
A	Summary	9
A.1	Status	9
A.2	Comments	9

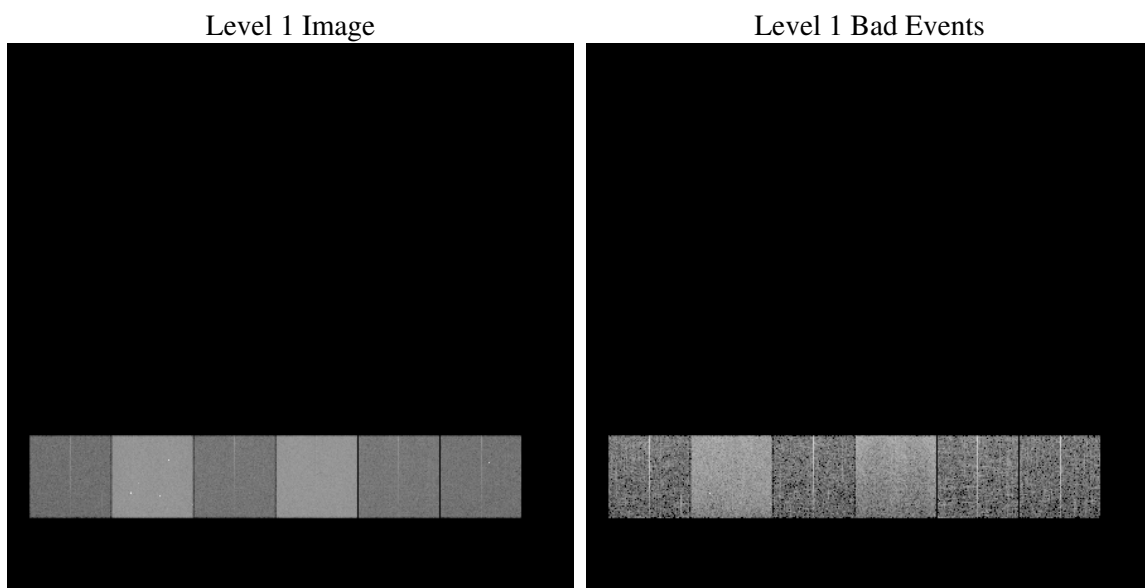
1 Front

seq_num	
obs_id	61664
title	ACIS-456789 diagnostics
observer	CHANDRA engineering request/realtime commanding
object	
dtcycle	0
cycle	P
ra_targ	0.0
dec_targ	0.0
ra_nom	89.505135427314
dec_nom	-32.028335647537
roll_nom	246.08308962485
revision	2
ontime	5409.1555048227
livetime	5340.6615208182
ontime4	1886.1872832328
ontime5	5817.5166539103
ontime6	2116.9964660108
ontime7	5409.1555048227
ontime8	2204.5865560472
ontime9	2052.0523767024
l2events	1198640

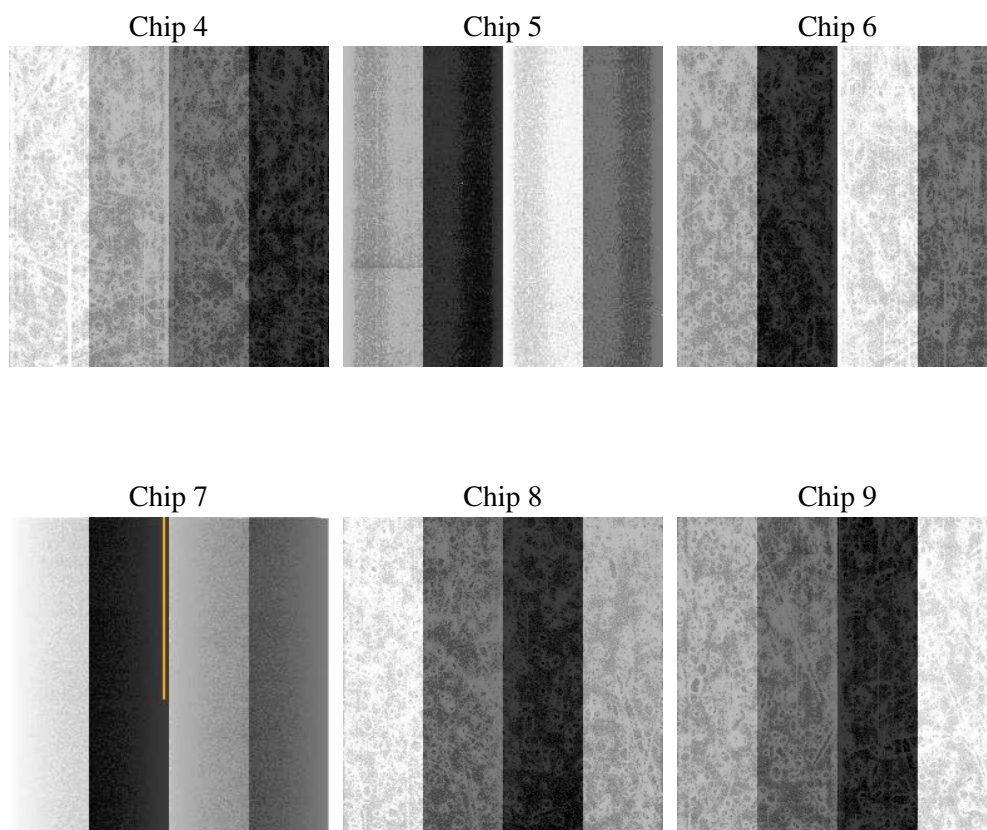
2 OBI

2.1 OBI

2.1.1 Images



2.1.2 Bias



2.1.3 Parameters

obi_num	2
ascdsver	7.6.9
caldsver	3.2.4
date	2006-11-14T20:25:05
revision	2

sched_exp_time	0.0
ontime	5412.4927022606
ontime4	1889.5244806707
ontime5	5820.8538513482
ontime6	2119.6382303089
ontime7	5412.4927022606
ontime8	2207.1462403387
ontime9	2054.8172609955
l1events	1426505

2.1.4 Events

	ccd 4	ccd 5	ccd 6	ccd 7	ccd 8	ccd 9
level 1 events	139802	392429	166043	399310	174267	154654
rejected events	20915	49724	20237	39758	22459	19696
rejected %	14%	12%	12%	9%	12%	12%

	ccd 4	ccd 5	ccd 6	ccd 7	ccd 8	ccd 9
grade 0 events	67024	48740	79477	68714	83705	74436
	47%	12%	47%	17%	48%	48%
grade 1 events	436	298	482	170	446	475
	0%	0%	0%	0%	0%	0%
grade 2 events	21234	160643	25500	106852	26726	23528
	15%	40%	15%	26%	15%	15%
grade 3 events	7347	12989	8879	27634	9697	8386
	5%	3%	5%	6%	5%	5%
grade 4 events	7442	12899	9046	27528	9772	8367
	5%	3%	5%	6%	5%	5%
grade 5 events	1117	6140	1384	5756	1560	1349
	0%	1%	0%	1%	0%	0%
grade 6 events	16021	107617	23137	129037	22131	20477
	11%	27%	13%	32%	12%	13%
grade 7 events	19181	43103	18138	33619	20230	17636
	13%	10%	10%	8%	11%	11%

2.2 Compared Parameters

Parameter	Planned	Actual	Parameter	Planned	Actual
Instrument	ACIS	ACIS	Obspar format version number	6	6
Detector	ACIS-456789	ACIS-456789	Obspar file type	PREDICTED	ACTUAL
Grating	NONE	NONE	Obspar update status	NONE	UPDATED
Data mode	FAINT	FAINT	On-chip summing requested	N	N
Observation mode	SECONDARY	SECONDARY	Subarray requested	NONE	NONE
Pointing RA	0	89.50513542731393	Alternating exposures requested	N	N
Pointing Dec	0	-32.02833564753748	Primary exposure time	3.2	3.2
Pointing Roll	0.0	246.0830896248478			
SIM focus pos (mm)	-0.684267	-0.6828225247311905			
SIM defocus (mm)	0	0.8505141146731063			
SIM translation stage pos (mm)	-190.132523	250.466033080201			
SIM translation stage offset (mm)	0	-0.01005468664627074			
Observation start time	103939166.413869	103939165.6454			
Observation start date	2001-04-17T23:59:26	2001-04-17T23:59:25			
Observation end time	103986396.365699	103986395.59723			
Observation end date	2001-04-18T13:06:36	2001-04-18T13:06:35			
Read mode	TIMED	TIMED			

2.3 Aspect

2.4 Star Slots

2.5 FID Slots

A Summary

A.1 Status

V&V Scientist	Jen Lauer
V&V Date (YYYY-MM-DD)	2006.11.15
V&V Edition	1
V&V Disposition and Status	OK
V&V Charge Time	5.4091555

A.2 Comments