

# V&V Reference Report

## L2 ASCDS Version : 8.4.5

Observation 61659 - L2 Version 3  
Chandra X-Ray Center

L2 Processing Date : Sep 15 2012

## Contents

<b>1</b>	<b>Front</b>	<b>2</b>
<b>2</b>	<b>OBI</b>	<b>3</b>
2.1	OBI . . . . .	3
2.1.1	Images . . . . .	3
2.1.2	Bias . . . . .	3
2.1.3	Parameters . . . . .	4
2.1.4	Events . . . . .	4
2.2	Compared Parameters . . . . .	5
2.3	Star Slots . . . . .	6
2.4	FID Slots . . . . .	6
<b>A</b>	<b>Summary</b>	<b>7</b>
A.1	Status . . . . .	7
A.2	Comments . . . . .	7

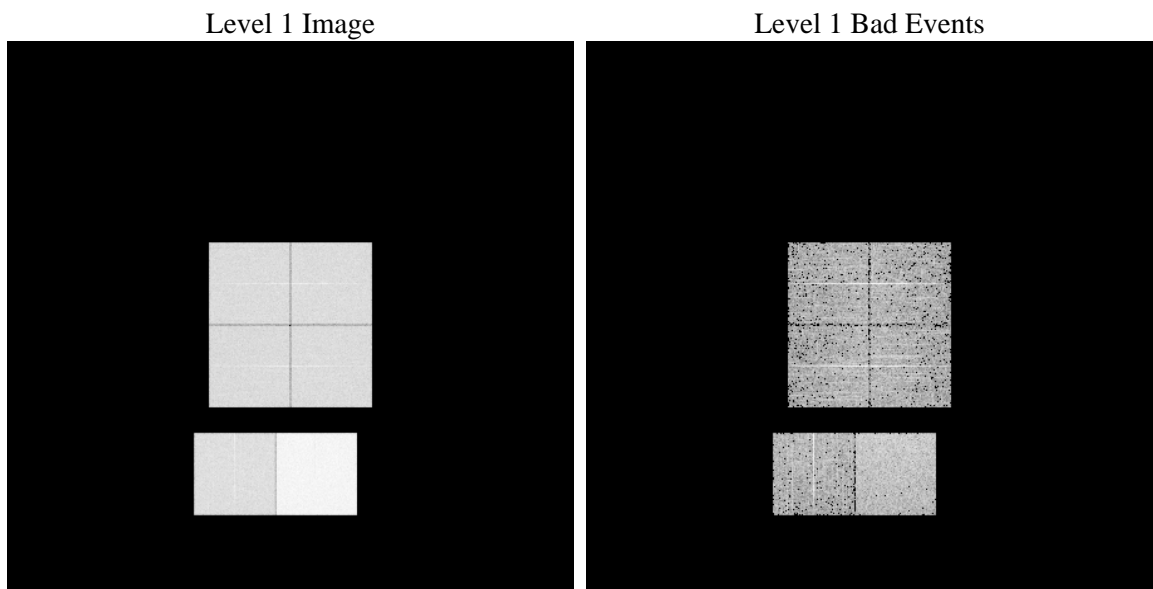
# 1 Front

seq_num	&#160	Sequence number
obs_id	61659	Observation id
title	ACIS-012367 diagnostics	Proposal title
observer	CHANDRA engineering request/realtime commanding	Principal investig
object	&#160	Source name
dtcycle	0	&#160
cycle	P	events from which exps? Prim/Second/Both
ra_targ	0.0	Observer's specified target RA [deg]
dec_targ	0.0	Observer's specified target Dec [deg]
ra_nom	91.003240192313	Nominal RA [deg]
dec_nom	-30.028537331481	Nominal Dec [deg]
roll_nom	242.9931852084	Nominal Roll [deg]
revision	3	Processing version of data
ontime	6286.6995843947	Sum of GTIs [s]
livetime	6207.0936088611	Livetime [s]
ontime0	2589.5881122798	Sum of GTIs [s]
ontime1	2638.2036523819	Sum of GTIs [s]
ontime2	2489.1164606214	Sum of GTIs [s]
ontime3	2570.1423607469	Sum of GTIs [s]
ontime6	2740.8989190608	Sum of GTIs [s]
ontime7	6286.6995843947	Sum of GTIs [s]
l2events	1244725	Number of level 2 events

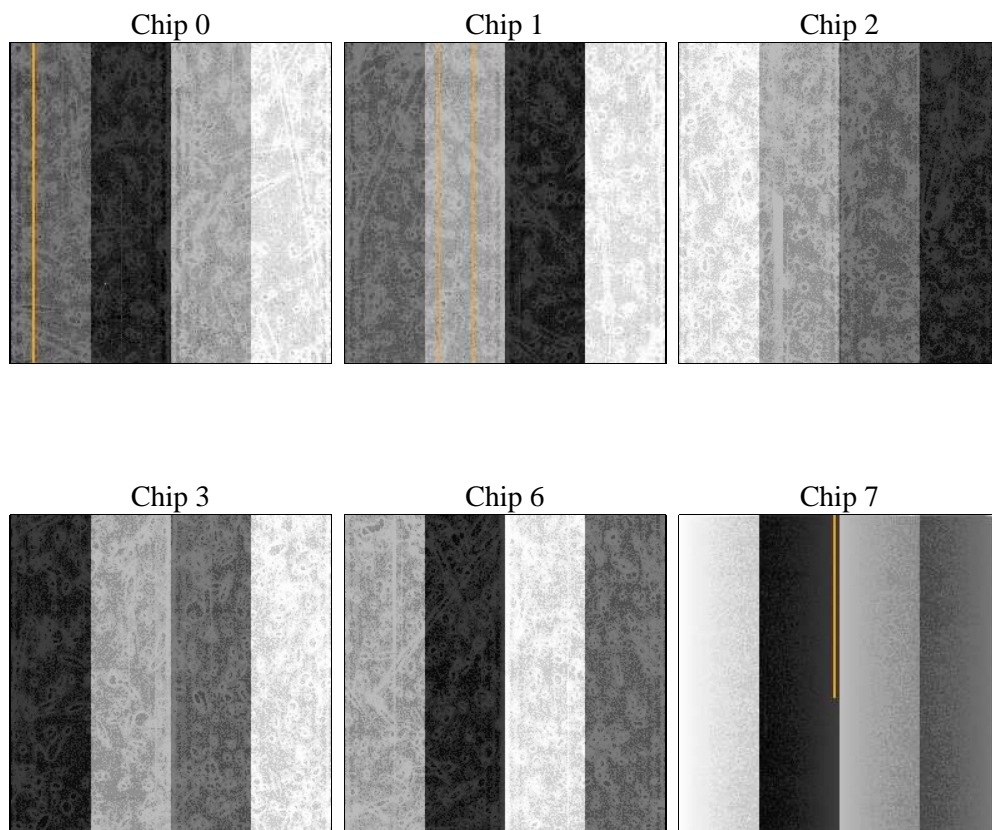
## 2 OBI

### 2.1 OBI

#### 2.1.1 Images



#### 2.1.2 Bias



### 2.1.3 Parameters

obi_num	2	Obi number	sched_exp_time	0.0	[s] Scheduled observation exposure time
ascdsver	8.4.5	Processing system revision	ontime	6286.6995843947	Sum of GTIs [s]
caldsver	4.5.1.1	&#160	ontime0	2589.5881122798	Sum of GTIs [s]
date	2012-09-15T17:56:01	Date and time of file creation	ontime1	2638.2036523819	Sum of GTIs [s]
revision	3	Processing version of data	ontime2	2489.1164606214	Sum of GTIs [s]
			ontime3	2570.1423607469	Sum of GTIs [s]
			ontime6	2740.8989190608	Sum of GTIs [s]
			ontime7	6286.6995843947	Sum of GTIs [s]
			l1events	1428624	Number of level 1 events

### 2.1.4 Events

	ccd 0	ccd 1	ccd 2	ccd 3	ccd 6	ccd 7		ccd 0	ccd 1	ccd 2	ccd 3	ccd 6	ccd 7
level 1 events	189067	192825	185219	190586	211426	459501	grade 0 events	94117	95942	92232	95542	104129	109444
rejected events	19158	19054	19715	20128	20958	32069		49%	49%	49%	50%	49%	23%
rejected %	10%	9%	10%	10%	9%	6%	grade 1 events	487	468	465	465	511	321
								0%	0%	0%	0%	0%	0%
							grade 2 events	29817	30305	29258	30156	32924	95386
								15%	15%	15%	15%	15%	20%
							grade 3 events	10751	11002	10384	10722	11557	43771
								5%	5%	5%	5%	5%	9%
							grade 4 events	10664	11196	10487	10607	11764	43297
								5%	5%	5%	5%	5%	9%
							grade 5 events	1454	1426	1353	1493	1581	6811
								0%	0%	0%	0%	0%	1%
							grade 6 events	24560	25326	23143	23431	30094	135534
								12%	13%	12%	12%	14%	29%
							grade 7 events	17217	17160	17897	18170	18866	24937
								9%	8%	9%	9%	8%	5%

## 2.2 Compared Parameters

Parameter	Planned	Actual	Parameter	Planned	Actual
Instrument	ACIS	ACIS	Obspar format version number	7	7
Detector	ACIS-012367	ACIS-012367	Obspar file type	PREDICTED	ACTUAL
Grating	NONE	NONE	Obspar update status	NONE	UPDATED
Data mode	FAINT	FAINT	On-chip summing requested	N	N
Observation mode	SECONDARY	SECONDARY	Subarray requested	NONE	NONE
[deg] Pointing RA	0	91.00324019231306	Alternating exposures requested	N	N
[deg] Pointing Dec	0	-30.02853733148061	[s] Primary exposure time	0.000000	3.2
[deg] Pointing Roll	0.0	242.9931852083969			
[mm] SIM focus pos	-0.782348	-0.6828225247311905			
[mm] SIM defocus	0	0.8505141146731063			
[mm] SIM translation stage pos	-233.592463	250.466033080201			
[mm] SIM translation stage offset	0	-0.01005468664627074			
[s] Observation start time (MET)	104394971.632	104394970.86308			
Observation start date	2001-04-23T06:36:12	2001-04-23T06:36:10			
[s] Observation end time (MET)	104440303.283	104440302.51484			
Observation end date	2001-04-23T19:11:43	2001-04-23T19:11:42			
Read mode	TIMED	TIMED			

## 2.3 Star Slots

## 2.4 FID Slots

## A Summary

### A.1 Status

V&V Scientist	Beth Sundheim
V&V Date (YYYY-MM-DD)	2012.09.19
V&V Edition	1
V&V Disposition and Status	OK
V&V Charge Time	6.2866995843947

### A.2 Comments