

V&V Reference Report

L2 ASCDS Version : 7.6.9

Observation 61659 - L2 Version 001
Chandra X-Ray Center

L2 Processing Date : Nov 14 2006

Contents

1	Front	2
2	OBI	3
2.1	OBI	3
2.1.1	Images	3
2.1.2	Bias	3
2.1.3	Parameters	4
2.1.4	Events	4
2.2	Compared Parameters	5
2.3	Aspect	6
2.4	Star Slots	8
2.5	FID Slots	8
A	Summary	9
A.1	Status	9
A.2	Comments	9

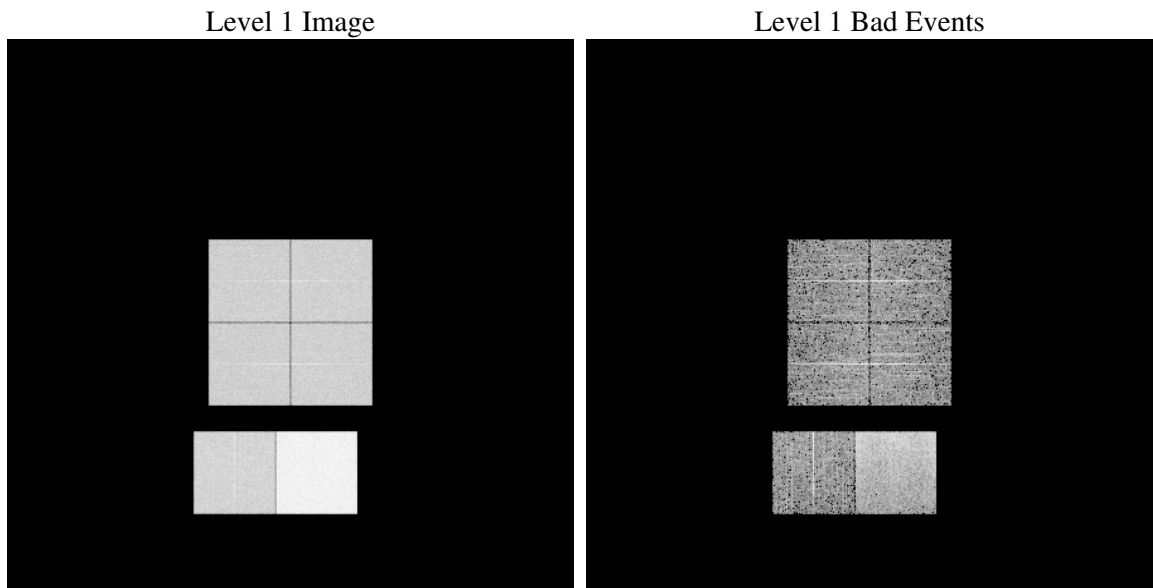
1 Front

seq_num	
obs_id	61659
title	ACIS-012367 diagnostics
observer	CHANDRA engineering request/realtime commanding
object	
dtcycle	0
cycle	P
ra_targ	0.0
dec_targ	0.0
ra_nom	91.003240188989
dec_nom	-30.028537336845
roll_nom	242.99318520644
revision	2
ontime	6286.502446413
livetime	6206.8989671592
ontime0	2588.5788091868
ontime1	2637.2353892773
ontime2	2488.1892375201
ontime3	2569.0509776473
ontime6	2741.0301010758
ontime7	6286.502446413
l2events	1232247

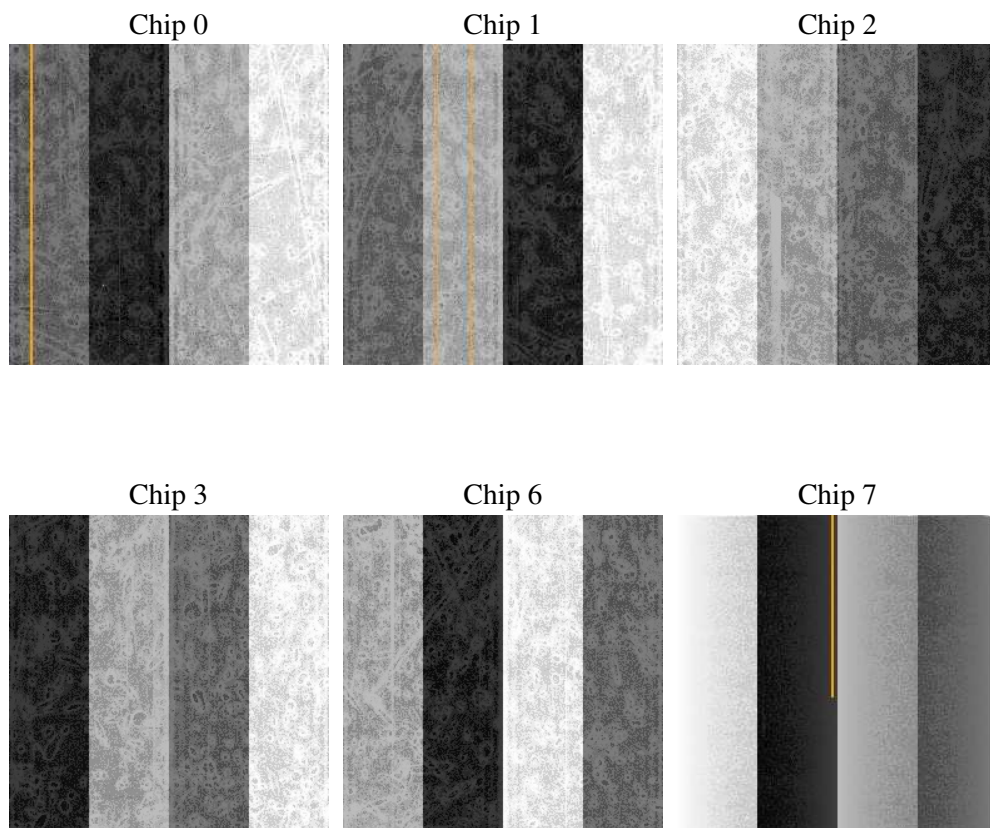
2 OBI

2.1 OBI

2.1.1 Images



2.1.2 Bias



2.1.3 Parameters

obi_num	2
ascdsver	7.6.9
caldsver	3.2.4
date	2006-11-14T20:47:46
revision	2

sched_exp_time	0.0
ontime	6287.5527895093
ontime0	2589.5881122798
ontime1	2638.2036523819
ontime2	2489.1164606214
ontime3	2570.1423607469
ontime6	2741.9162841737
ontime7	6287.5527895093
l1events	1428624

2.1.4 Events

	ccd 0	ccd 1	ccd 2	ccd 3	ccd 6	ccd 7
level 1 events	189067	192825	185219	190586	211426	459501
rejected events	19158	19054	19715	20128	20958	44666
rejected %	10%	9%	10%	10%	9%	9%

	ccd 0	ccd 1	ccd 2	ccd 3	ccd 6	ccd 7
grade 0 events	94117	95942	92232	95542	104128	80176
	49%	49%	49%	50%	49%	17%
grade 1 events	487	468	465	465	511	209
	0%	0%	0%	0%	0%	0%
grade 2 events	29817	30305	29258	30156	32925	122295
	15%	15%	15%	15%	15%	26%
grade 3 events	10751	11002	10384	10722	11557	32491
	5%	5%	5%	5%	5%	7%
grade 4 events	10664	11196	10487	10607	11764	31851
	5%	5%	5%	5%	5%	6%
grade 5 events	1454	1426	1353	1493	1581	6516
	0%	0%	0%	0%	0%	1%
grade 6 events	24560	25326	23143	23431	30094	148022
	12%	13%	12%	12%	14%	32%
grade 7 events	17217	17160	17897	18170	18866	37941
	9%	8%	9%	9%	8%	8%

2.2 Compared Parameters

Parameter	Planned	Actual	Parameter	Planned	Actual
Instrument	ACIS	ACIS	Obspar format version number	6	6
Detector	ACIS-012367	ACIS-012367	Obspar file type	PREDICTED	ACTUAL
Grating	NONE	NONE	Obspar update status	NONE	UPDATED
Data mode	FAINT	FAINT	On-chip summing requested	N	N
Observation mode	SECONDARY	SECONDARY	Subarray requested	NONE	NONE
Pointing RA	0	91.00324018898866	Alternating exposures requested	N	N
Pointing Dec	0	-30.02853733684486	Primary exposure time	0.000000	3.2
Pointing Roll	0.0	242.9931852064382			
SIM focus pos (mm)	-0.782348	-0.6828225247311905			
SIM defocus (mm)	0	0.8505141146731063			
SIM translation stage pos (mm)	-233.592463	250.466033080201			
SIM translation stage offset (mm)	0	-0.01005468664627074			
Observation start time	104394971.632	104394970.86308			
Observation start date	2001-04-23T06:36:12	2001-04-23T06:36:10			
Observation end time	104440303.283	104440302.51484			
Observation end date	2001-04-23T19:11:43	2001-04-23T19:11:42			
Read mode	TIMED	TIMED			

2.3 Aspect

2.4 Star Slots

2.5 FID Slots

A Summary

A.1 Status

V&V Scientist	Jen Lauer
V&V Date (YYYY-MM-DD)	2006.11.15
V&V Edition	1
V&V Disposition and Status	OK
V&V Charge Time	6.28650244

A.2 Comments