

V&V Reference Report

L2 ASCDS Version : 7.6.9

Observation 61651 - L2 Version 001
Chandra X-Ray Center

L2 Processing Date : Nov 29 2006

Contents

1	Front	2
2	OBI	3
2.1	OBI	3
2.1.1	Images	3
2.1.2	Bias	3
2.1.3	Parameters	4
2.1.4	Events	4
2.2	Compared Parameters	5
2.3	Aspect	6
2.4	Star Slots	8
2.5	FID Slots	8
A	Summary	9
A.1	Status	9
A.2	Comments	9

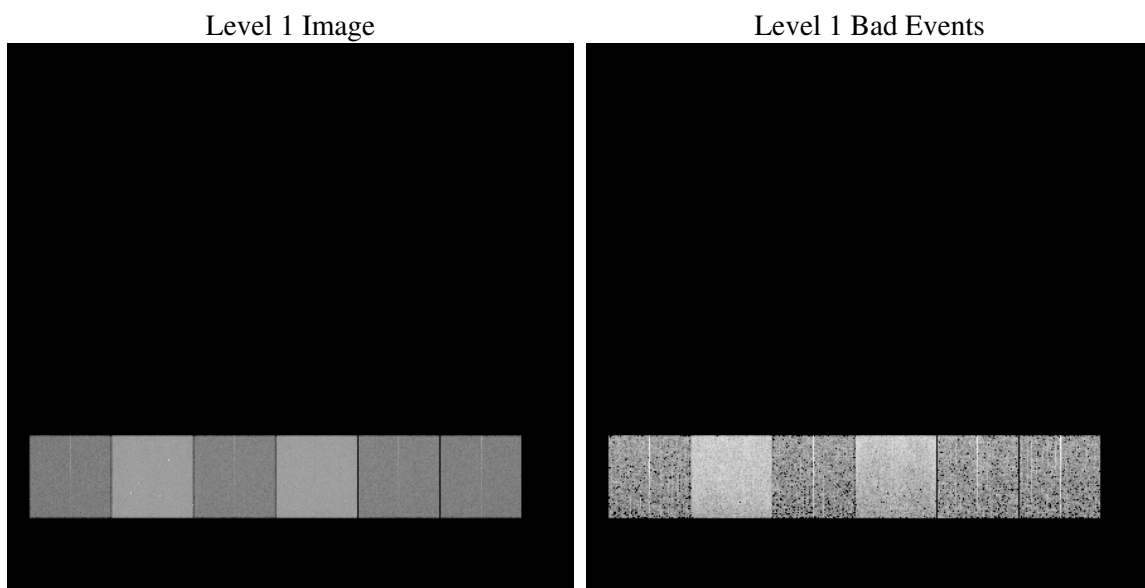
1 Front

seq_num	
obs_id	61651
title	ACIS-456789 diagnostics
observer	CHANDRA engineering request/realtime commanding
object	
dtcycle	0
cycle	P
ra_targ	0.0
dec_targ	0.0
ra_nom	279.97207476303
dec_nom	25.013598789918
roll_nom	119.1196848114
revision	2
ontime	5285.8746136725
livetime	5218.9416865426
ontime4	2113.1559410989
ontime5	5671.5488629043
ontime6	2314.0699191988
ontime7	5285.8746136725
ontime8	2288.1719909757
ontime9	2226.4387693405
l2events	1216893

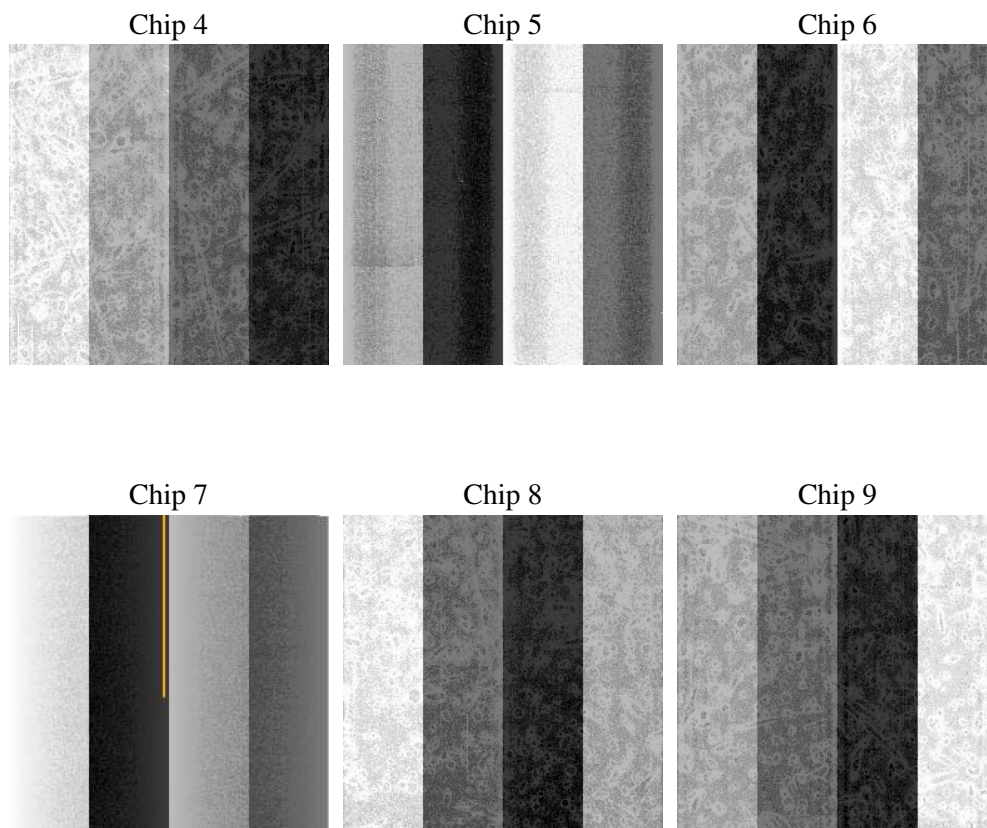
2 OBI

2.1 OBI

2.1.1 Images



2.1.2 Bias



2.1.3 Parameters

obi_num	2
ascdsver	7.6.9
caldbver	3.2.4
date	2006-11-29T23:42:09
revision	2

sched_exp_time	0.0
ontime	5286.0969617963
ontime4	2113.1559410989
ontime5	5671.7712110281
ontime6	2314.1003507525
ontime7	5286.0969617963
ontime8	2288.1719909757
ontime9	2226.5923208892
l1events	1429467

2.1.4 Events

	ccd 4	ccd 5	ccd 6	ccd 7	ccd 8	ccd 9
level 1 events	151878	375991	176281	384613	175888	164816
rejected events	17589	48704	17112	37926	18942	17831
rejected %	11%	12%	9%	9%	10%	10%

	ccd 4	ccd 5	ccd 6	ccd 7	ccd 8	ccd 9
grade 0 events	76195	45641	87053	67083	86885	80735
	50%	12%	49%	17%	49%	48%
grade 1 events	406	159	425	171	431	398
	0%	0%	0%	0%	0%	0%
grade 2 events	23471	153641	27624	102261	27502	26034
	15%	40%	15%	26%	15%	15%
grade 3 events	8287	12282	9634	27483	9810	9001
	5%	3%	5%	7%	5%	5%
grade 4 events	8206	12051	9964	26775	9824	9013
	5%	3%	5%	6%	5%	5%
grade 5 events	1223	6121	1450	5564	1480	1381
	0%	1%	0%	1%	0%	0%
grade 6 events	18130	103672	24894	123085	22925	22202
	11%	27%	14%	32%	13%	13%
grade 7 events	15960	42424	15237	32191	17031	16052
	10%	11%	8%	8%	9%	9%

2.2 Compared Parameters

Parameter	Planned	Actual	Parameter	Planned	Actual
Instrument	ACIS	ACIS	Obspar format version number	6	6
Detector	ACIS-456789	ACIS-456789	Obspar file type	PREDICTED	ACTUAL
Grating	NONE	NONE	Obspar update status	NONE	UPDATED
Data mode	FAINT	FAINT	On-chip summing requested	N	N
Observation mode	SECONDARY	SECONDARY	Subarray requested	NONE	NONE
Pointing RA	0	279.9720747630333	Alternating exposures requested	N	N
Pointing Dec	0	25.0135987899184	Primary exposure time	0.000000	3.2
Pointing Roll	0.0	119.1196848113972			
SIM focus pos (mm)	-0.684267	-0.6828225247311905			
SIM defocus (mm)	0	0.8505141146731063			
SIM translation stage pos (mm)	-190.132523	250.466033080201			
SIM translation stage offset (mm)	0	-0.01005468664627074			
Observation start time	105310737.417	105310736.64863			
Observation start date	2001-05-03T20:58:57	2001-05-03T20:58:56			
Observation end time	105322490.068	105322489.29909			
Observation end date	2001-05-04T00:14:50	2001-05-04T00:14:49			
Read mode	TIMED	TIMED			

2.3 Aspect

2.4 Star Slots

2.5 FID Slots

A Summary

A.1 Status

V&V Scientist	Beth Sundheim
V&V Date (YYYY-MM-DD)	2006.11.30
V&V Edition	1
V&V Disposition and Status	OK
V&V Charge Time	5.28587461

A.2 Comments