

V&V Reference Report

L2 ASCDS Version : 7.6.9

Observation 61648 - L2 Version 001
Chandra X-Ray Center

L2 Processing Date : Nov 29 2006

Contents

1	Front	2
2	OBI	3
2.1	OBI	3
2.1.1	Images	3
2.1.2	Bias	3
2.1.3	Parameters	4
2.1.4	Events	4
2.2	Compared Parameters	5
2.3	Aspect	6
2.4	Star Slots	8
2.5	FID Slots	8
A	Summary	9
A.1	Status	9
A.2	Comments	9

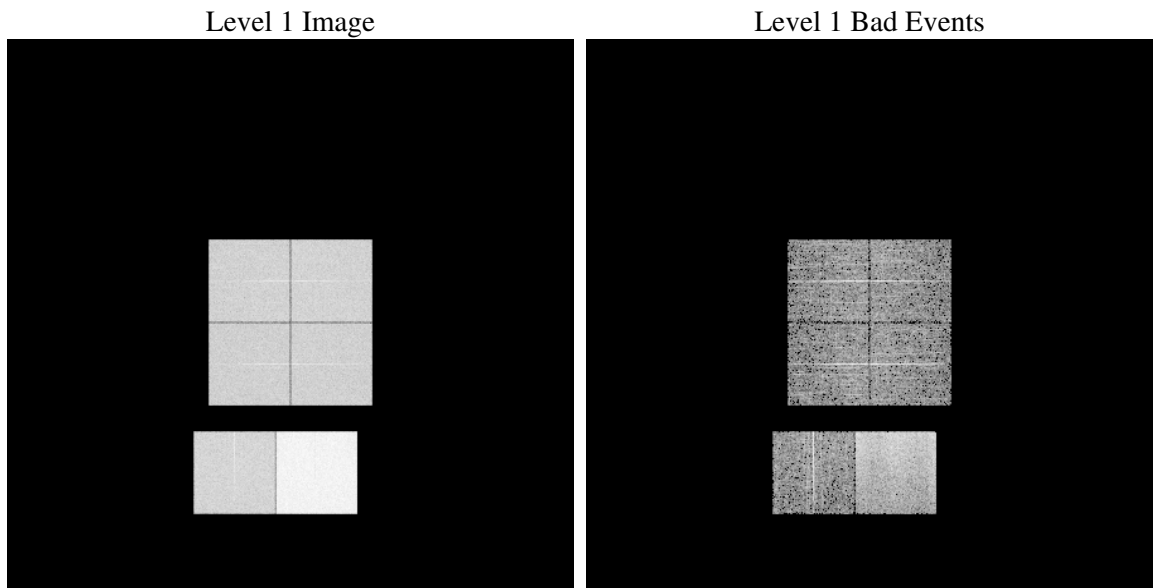
1 Front

seq_num	
obs_id	61648
title	ACIS-012367 diagnostics
observer	CHANDRA engineering request/realtime commanding
object	
dtcycle	0
cycle	P
ra_targ	0.0
dec_targ	0.0
ra_nom	279.97155892955
dec_nom	25.012610698406
roll_nom	121.26804176955
revision	2
ontime	6153.5078104138
livetime	6075.5883893208
ontime0	2526.8846822083
ontime1	2607.9517220557
ontime2	2394.0844017267
ontime3	2429.571661666
ontime6	2663.1306546181
ontime7	6153.5078104138
l2events	1183892

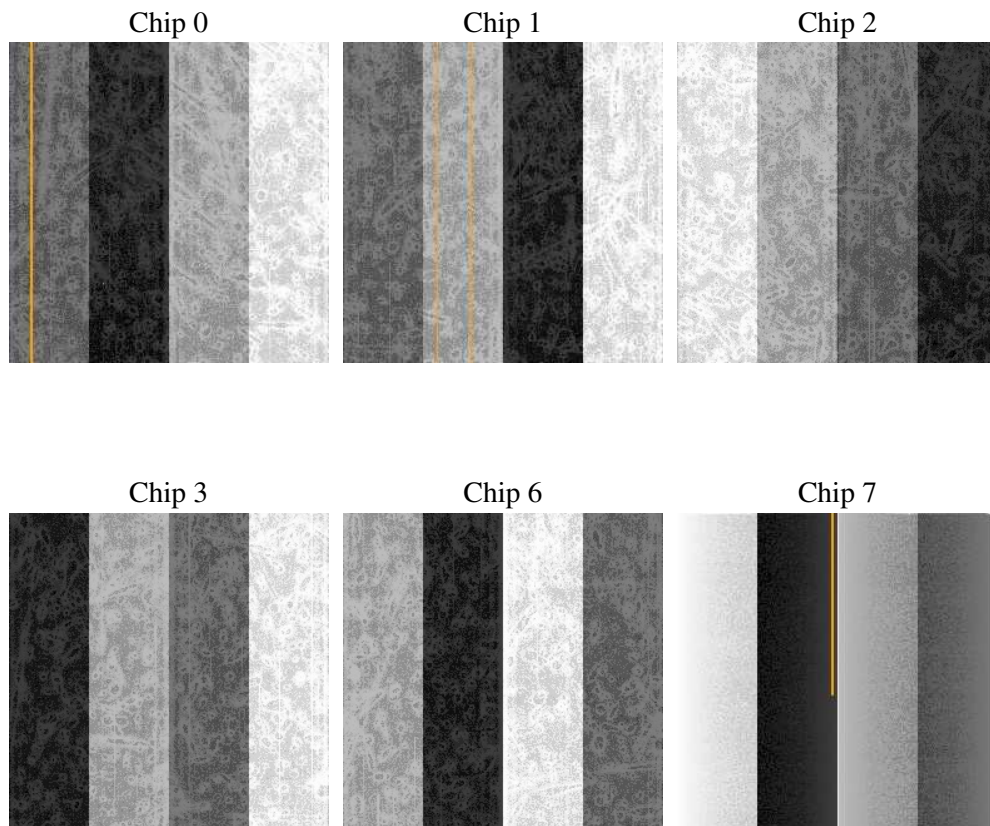
2 OBI

2.1 OBI

2.1.1 Images



2.1.2 Bias



2.1.3 Parameters

obi_num	1
ascdsver	7.6.9
caldsver	3.2.4
date	2006-11-30T00:16:42
revision	2

sched_exp_time	0.0
ontime	6154.6728200763
ontime0	2528.0086518675
ontime1	2609.0346517265
ontime2	2395.1262913942
ontime3	2430.7777113318
ontime6	2664.1315042824
ontime7	6154.6728200763
l1events	1377379

2.1.4 Events

	ccd 0	ccd 1	ccd 2	ccd 3	ccd 6	ccd 7
level 1 events	184419	188673	176790	179659	202413	445425
rejected events	19661	18688	19091	19067	20138	46567
rejected %	10%	9%	10%	10%	9%	10%

	ccd 0	ccd 1	ccd 2	ccd 3	ccd 6	ccd 7
grade 0 events	90695	93737	87468	89987	99163	74111
	49%	49%	49%	50%	48%	16%
grade 1 events	521	445	462	496	472	177
	0%	0%	0%	0%	0%	0%
grade 2 events	29132	29970	27659	27835	31639	119751
	15%	15%	15%	15%	15%	26%
grade 3 events	10377	10777	9889	10288	11406	30222
	5%	5%	5%	5%	5%	6%
grade 4 events	10437	10813	10165	10174	11209	29740
	5%	5%	5%	5%	5%	6%
grade 5 events	1484	1446	1315	1406	1647	6614
	0%	0%	0%	0%	0%	1%
grade 6 events	24117	24688	22518	22308	28858	145034
	13%	13%	12%	12%	14%	32%
grade 7 events	17656	16797	17314	17165	18019	39776
	9%	8%	9%	9%	8%	8%

2.2 Compared Parameters

Parameter	Planned	Actual	Parameter	Planned	Actual
Instrument	ACIS	ACIS	Obspar format version number	6	6
Detector	ACIS-012367	ACIS-012367	Obspar file type	PREDICTED	ACTUAL
Grating	NONE	NONE	Obspar update status	NONE	UPDATED
Data mode	FAINT	FAINT	On-chip summing requested	N	N
Observation mode	SECONDARY	SECONDARY	Subarray requested	NONE	NONE
Pointing RA	0	279.9715589295532	Alternating exposures requested	N	N
Pointing Dec	0	25.01261069840641	Primary exposure time	0.000000	3.2
Pointing Roll	0.0	121.2680417695515			
SIM focus pos (mm)	-0.782348	-0.7809083437167272			
SIM defocus (mm)	0	0.7524282956875696			
SIM translation stage pos (mm)	-233.592463	250.466033080201			
SIM translation stage offset (mm)	0	-0.01005468664627074			
Observation start time	105537752.376	105537751.60745			
Observation start date	2001-05-06T12:02:32	2001-05-06T12:02:31			
Observation end time	105563346.627	105563345.85844			
Observation end date	2001-05-06T19:09:07	2001-05-06T19:09:05			
Read mode	TIMED	TIMED			

2.3 Aspect

2.4 Star Slots

2.5 FID Slots

A Summary

A.1 Status

V&V Scientist	Beth Sundheim
V&V Date (YYYY-MM-DD)	2006.11.30
V&V Edition	1
V&V Disposition and Status	OK
V&V Charge Time	6.15350781

A.2 Comments