

V&V Reference Report

L2 ASCDS Version : 7.6.9

Observation 61637 - L2 Version 001
Chandra X-Ray Center

L2 Processing Date : Nov 21 2006

Contents

1	Front	2
2	OBI	3
2.1	OBI	3
2.1.1	Images	3
2.1.2	Bias	3
2.1.3	Parameters	4
2.1.4	Events	4
2.2	Compared Parameters	5
2.3	Aspect	6
2.4	Star Slots	8
2.5	FID Slots	8
A	Summary	9
A.1	Status	9
A.2	Comments	9

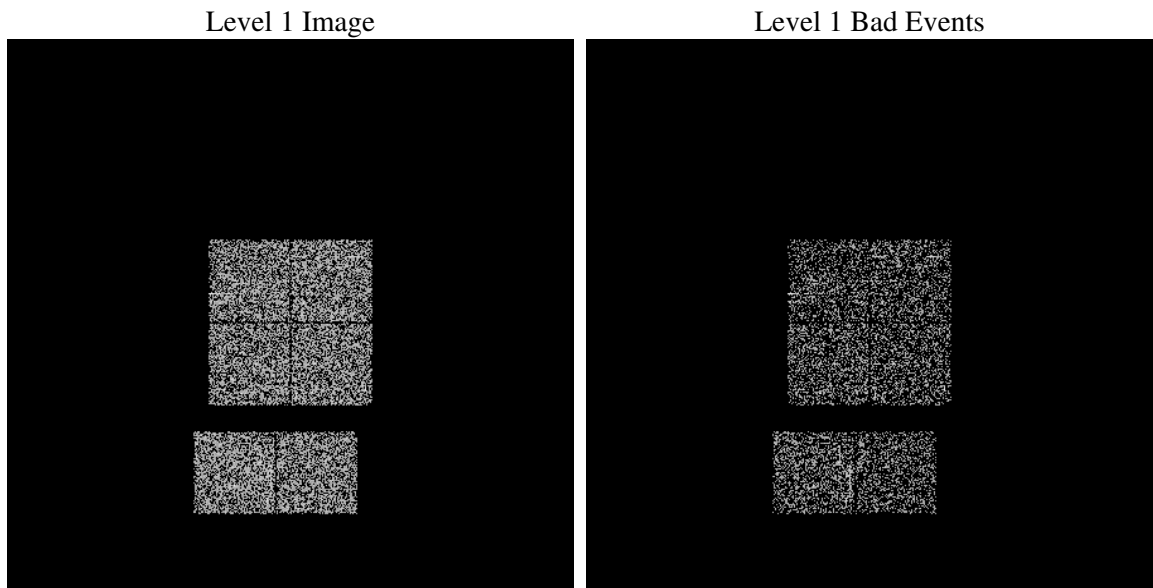
1 Front

seq_num	
obs_id	61637
title	ACIS-012367 diagnostics
observer	CHANDRA engineering request/realtime commanding
object	
dtcycle	0
cycle	P
ra_targ	0.0
dec_targ	0.0
ra_nom	321.47763471351
dec_nom	0.017450685213934
roll_nom	108.75293692963
revision	2
ontime	32.000000029802
livetime	31.594796761338
ontime0	32.000000029802
ontime1	32.000000029802
ontime2	32.000000029802
ontime3	32.000000029802
ontime6	32.000000029802
ontime7	32.000000029802
l2events	11482

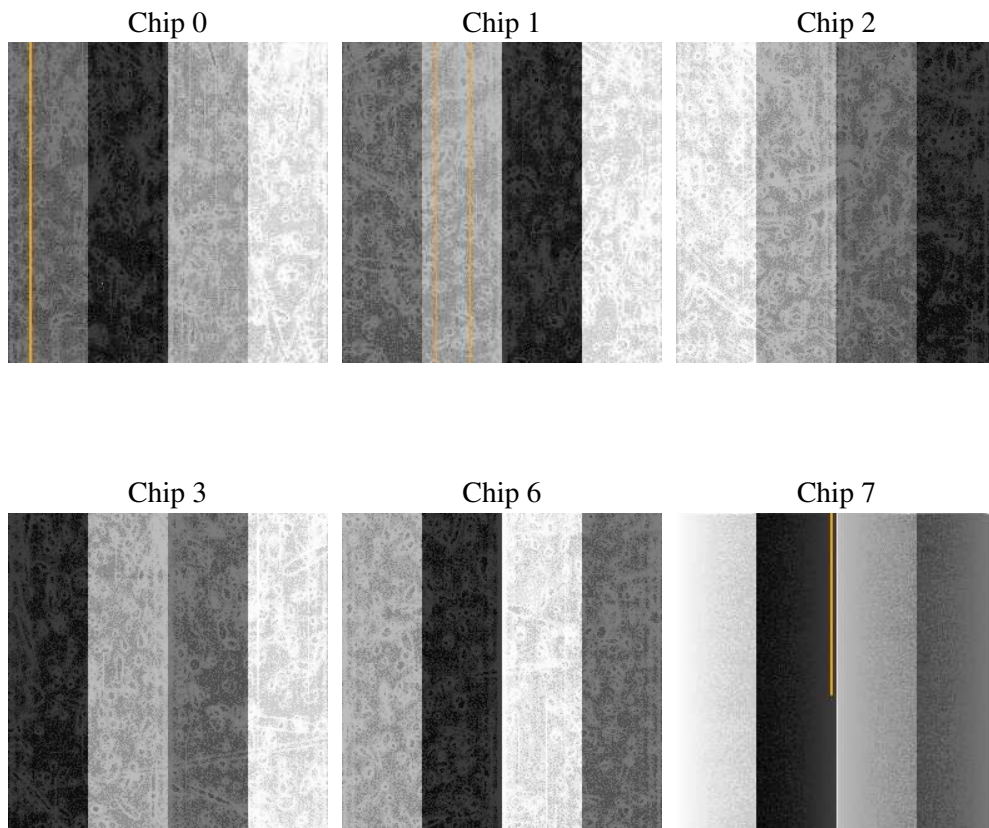
2 OBI

2.1 OBI

2.1.1 Images



2.1.2 Bias



2.1.3 Parameters

obi_num	0
ascdsver	7.6.9
caldbver	3.2.4
date	2006-11-21T21:45:40
revision	2

sched_exp_time	0.0
ontime	51.855971902609
ontime0	51.855971902609
ontime1	51.855971902609
ontime2	51.855971902609
ontime3	51.855971902609
ontime6	51.855971902609
ontime7	51.855971902609
l1events	22680

2.1.4 Events

	ccd 0	ccd 1	ccd 2	ccd 3	ccd 6	ccd 7
level 1 events	3668	3817	3666	3778	4066	3685
rejected events	1625	1679	1875	1733	2070	1603
rejected %	44%	43%	51%	45%	50%	43%

	ccd 0	ccd 1	ccd 2	ccd 3	ccd 6	ccd 7
grade 0 events	1744	1822	1859	1853	1936	675
	47%	47%	50%	49%	47%	18%
grade 1 events	14	18	11	11	8	1
	0%	0%	0%	0%	0%	0%
grade 2 events	558	590	554	567	638	974
	15%	15%	15%	15%	15%	26%
grade 3 events	191	214	212	216	212	293
	5%	5%	5%	5%	5%	7%
grade 4 events	225	240	194	208	214	270
	6%	6%	5%	5%	5%	7%
grade 5 events	21	35	22	32	34	66
	0%	0%	0%	0%	0%	1%
grade 6 events	490	479	473	435	554	1115
	13%	12%	12%	11%	13%	30%
grade 7 events	425	419	341	456	470	291
	11%	10%	9%	12%	11%	7%

2.2 Compared Parameters

Parameter	Planned	Actual	Parameter	Planned	Actual
Instrument	ACIS	ACIS	Obspar format version number	6	6
Detector	ACIS-012367	ACIS-012367	Obspar file type	PREDICTED	ACTUAL
Grating	NONE	NONE	Obspar update status	NONE	UPDATED
Data mode	FAINT	FAINT	On-chip summing requested	N	N
Observation mode	SECONDARY	SECONDARY	Subarray requested	NONE	NONE
Pointing RA	0	321.477634713514	Alternating exposures requested	N	N
Pointing Dec	0	0.01745068521393415	Primary exposure time	0.000000	3.2
Pointing Roll	0.0	108.7529369296342			
SIM focus pos (mm)	-0.782348	-1.428180813131781			
SIM defocus (mm)	0	0.1051558262725154			
SIM translation stage pos (mm)	-233.592463	250.466033080201			
SIM translation stage offset (mm)	0	-0.01005468664627074			
Observation start time	106222930.053	106222929.28405			
Observation start date	2001-05-14T10:22:10	2001-05-14T10:22:09			
Observation end time	106225101.003	106225100.23413			
Observation end date	2001-05-14T10:58:21	2001-05-14T10:58:20			
Read mode	TIMED	TIMED			

2.3 Aspect

2.4 Star Slots

2.5 FID Slots

A Summary

A.1 Status

V&V Scientist	Jen Lauer
V&V Date (YYYY-MM-DD)	2006.11.22
V&V Edition	1
V&V Disposition and Status	OK
V&V Charge Time	0.032

A.2 Comments