

V&V Reference Report

L2 ASCDS Version : 8.4.5

Observation 61636 - L2 Version 3
Chandra X-Ray Center

L2 Processing Date : Sep 18 2012

Contents

1	Front	2
2	OBI	3
2.1	OBI	3
2.1.1	Images	3
2.1.2	Bias	3
2.1.3	Parameters	4
2.1.4	Events	4
2.2	Compared Parameters	5
2.3	Star Slots	6
2.4	FID Slots	6
A	Summary	7
A.1	Status	7
A.2	Comments	7

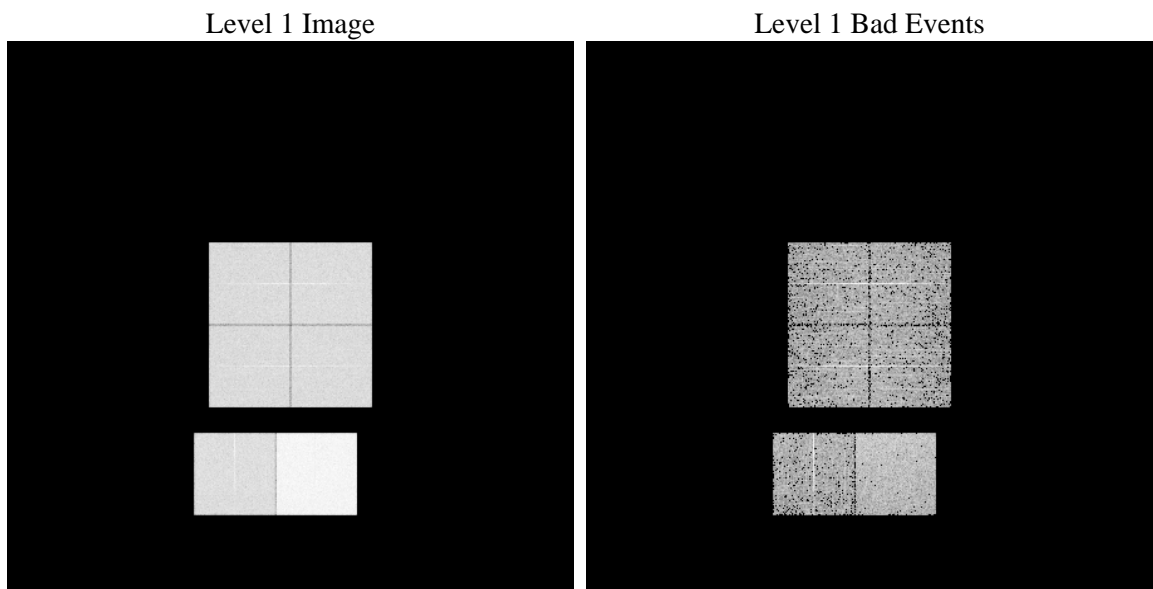
1 Front

seq_num	 	Sequence number
obs_id	61636	Observation id
title	ACIS-012367 diagnostics	Proposal title
observer	CHANDRA engineering request/realtime commanding	Principal investig
object	 	Source name
dtcycle	0	
cycle	P	events from which exps? Prim/Second/Both
ra_targ	0.0	Observer's specified target RA [deg]
dec_targ	0.0	Observer's specified target Dec [deg]
ra_nom	321.47759364771	Nominal RA [deg]
dec_nom	0.017888803733379	Nominal Dec [deg]
roll_nom	108.7600113105	Nominal Roll [deg]
revision	3	Processing version of data
ontime	4916.6047624052	Sum of GTIs [s]
livetime	4854.3477524796	Livetime [s]
ontime0	1985.2098854184	Sum of GTIs [s]
ontime1	2064.5398225933	Sum of GTIs [s]
ontime2	1939.7533253133	Sum of GTIs [s]
ontime3	1969.0867156386	Sum of GTIs [s]
ontime6	2109.9141633064	Sum of GTIs [s]
ontime7	4916.6047624052	Sum of GTIs [s]
l2events	960491	Number of level 2 events

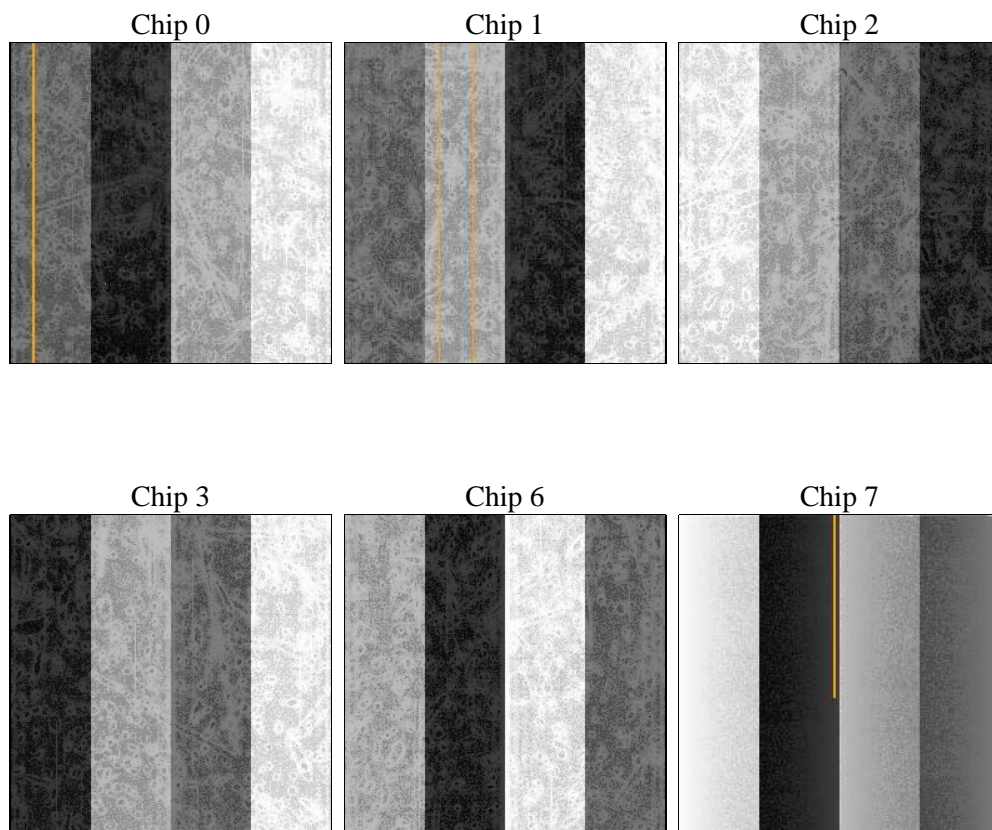
2 OBI

2.1 OBI

2.1.1 Images



2.1.2 Bias



2.1.3 Parameters

obi_num	0	Obi number	sched_exp_time	0.0	[s] Scheduled observation exposure time
ascdsver	8.4.5	Processing system revision	ontime	4916.6047624052	Sum of GTIs [s]
caldsver	4.5.1.1	 	ontime0	1985.2098854184	Sum of GTIs [s]
date	2012-09-19T01:25:41	Date and time of file creation	ontime1	2064.5398225933	Sum of GTIs [s]
revision	3	Processing version of data	ontime2	1939.7533253133	Sum of GTIs [s]
			ontime3	1969.0867156386	Sum of GTIs [s]
			ontime6	2109.9141633064	Sum of GTIs [s]
			ontime7	4916.6047624052	Sum of GTIs [s]
			l1events	1106103	Number of level 1 events

2.1.4 Events

	ccd 0	ccd 1	ccd 2	ccd 3	ccd 6	ccd 7		ccd 0	ccd 1	ccd 2	ccd 3	ccd 6	ccd 7
level 1 events	145055	150654	144955	146926	161095	357418	grade 0 events	71729	74828	71840	73607	79019	85889
rejected events	15538	15438	16235	15891	16448	25695		49%	49%	49%	50%	49%	24%
rejected %	10%	10%	11%	10%	10%	7%	grade 1 events	380	387	361	413	410	233
								0%	0%	0%	0%	0%	0%
							grade 2 events	22815	23659	22328	22726	25097	73553
								15%	15%	15%	15%	15%	20%
							grade 3 events	8129	8637	8199	8240	8937	34065
								5%	5%	5%	5%	5%	9%
							grade 4 events	8141	8645	8097	8291	8891	33285
								5%	5%	5%	5%	5%	9%
							grade 5 events	1155	1163	1088	1157	1304	5475
								0%	0%	0%	0%	0%	1%
							grade 6 events	18703	19447	18489	18171	22703	104931
								12%	12%	12%	12%	14%	29%
							grade 7 events	14003	13888	14553	14321	14734	19987
								9%	9%	10%	9%	9%	5%

2.2 Compared Parameters

Parameter	Planned	Actual	Parameter	Planned	Actual
Instrument	ACIS	ACIS	Obspar format version number	7	7
Detector	ACIS-012367	ACIS-012367	Obspar file type	PREDICTED	ACTUAL
Grating	NONE	NONE	Obspar update status	NONE	UPDATED
Data mode	FAINT	FAINT	On-chip summing requested	N	N
Observation mode	SECONDARY	SECONDARY	Subarray requested	NONE	NONE
[deg] Pointing RA	0	321.4775936477091	Alternating exposures requested	N	N
[deg] Pointing Dec	0	0.01788880373337889	[s] Primary exposure time	3.2	3.2
[deg] Pointing Roll	0.0	108.7600113104969			
[mm] SIM focus pos	-0.782348	-1.428180813131781			
[mm] SIM defocus	0	0.1051558262725154			
[mm] SIM translation stage pos	-233.592463	250.466033080201			
[mm] SIM translation stage offset	0	-0.01005468664627074			
[s] Observation start time (MET)	106225101.002604	106225100.23413			
Observation start date	2001-05-14T10:58:21	2001-05-14T10:58:20			
[s] Observation end time (MET)	106234770.852979	106234770.08451			
Observation end date	2001-05-14T13:39:31	2001-05-14T13:39:30			
Read mode	TIMED	TIMED			

2.3 Star Slots

2.4 FID Slots

A Summary

A.1 Status

V&V Scientist	Beth Sundheim
V&V Date (YYYY-MM-DD)	2012.09.21
V&V Edition	1
V&V Disposition and Status	OK
V&V Charge Time	4.9166047624052

A.2 Comments