

V&V Reference Report

L2 ASCDS Version : 7.6.9

Observation 61636 - L2 Version 001
Chandra X-Ray Center

L2 Processing Date : Nov 21 2006

Contents

1	Front	2
2	OBI	3
2.1	OBI	3
2.1.1	Images	3
2.1.2	Bias	3
2.1.3	Parameters	4
2.1.4	Events	4
2.2	Compared Parameters	5
2.3	Aspect	6
2.4	Star Slots	8
2.5	FID Slots	8
A	Summary	9
A.1	Status	9
A.2	Comments	9

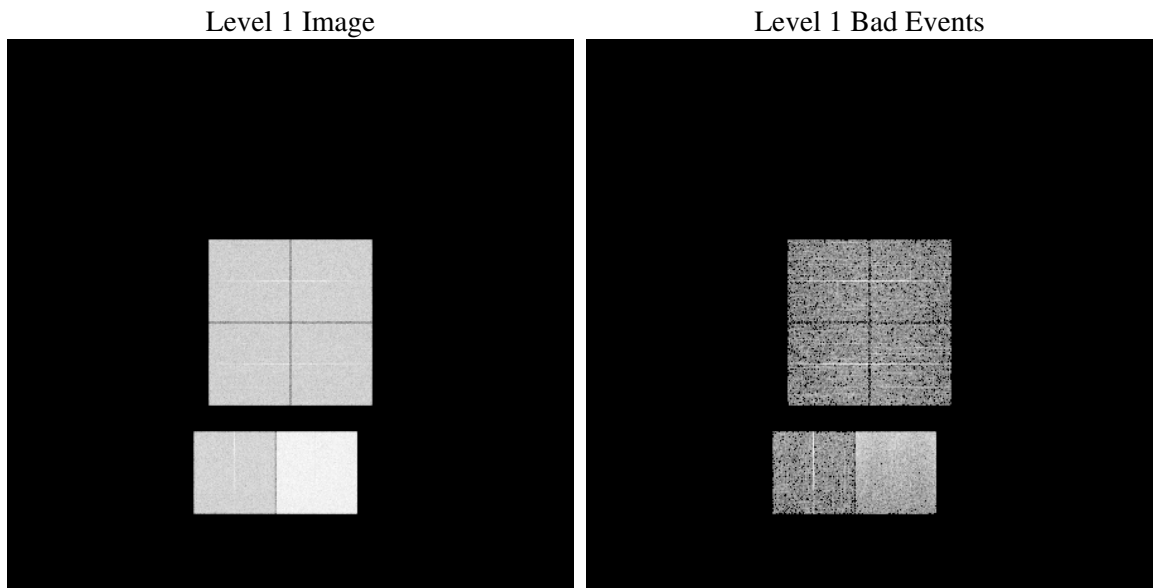
1 Front

seq_num	
obs_id	61636
title	ACIS-012367 diagnostics
observer	CHANDRA engineering request/realtime commanding
object	
dtcycle	0
cycle	P
ra_targ	0.0
dec_targ	0.0
ra_nom	321.47759364771
dec_nom	0.017888803733395
roll_nom	108.7600113105
revision	2
ontime	4916.3143280894
livetime	4854.060995818
ontime0	1986.5056978613
ontime1	2064.3314682692
ontime2	1941.1860110015
ontime3	1970.2183680683
ontime6	2109.7878889889
ontime7	4916.3143280894
l2events	950878

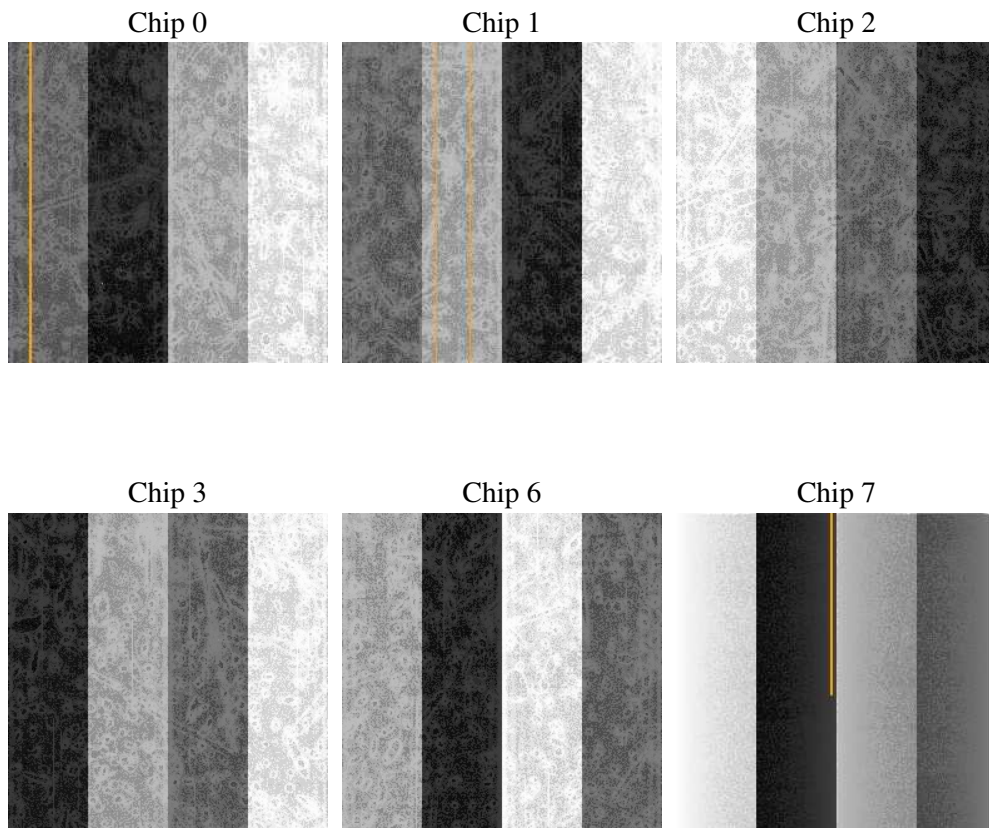
2 OBI

2.1 OBI

2.1.1 Images



2.1.2 Bias



2.1.3 Parameters

obi_num	0
ascdsver	7.6.9
caldbver	3.2.4
date	2006-11-21T21:57:28
revision	2

sched_exp_time	0.0
ontime	4916.6047624052
ontime0	1986.7550921738
ontime1	2064.5398225933
ontime2	1941.3806120604
ontime3	1970.5498423874
ontime6	2109.9141633064
ontime7	4916.6047624052
l1events	1106103

2.1.4 Events

	ccd 0	ccd 1	ccd 2	ccd 3	ccd 6	ccd 7
level 1 events	145055	150654	144955	146926	161095	357418
rejected events	15538	15438	16003	15892	16447	35627
rejected %	10%	10%	11%	10%	10%	9%

	ccd 0	ccd 1	ccd 2	ccd 3	ccd 6	ccd 7
grade 0 events	71731	74828	71843	73612	79028	62912
	49%	49%	49%	50%	49%	17%
grade 1 events	380	388	361	413	411	152
	0%	0%	0%	0%	0%	0%
grade 2 events	22813	23659	22325	22721	25088	94692
	15%	15%	15%	15%	15%	26%
grade 3 events	8131	8639	8199	8243	8937	25374
	5%	5%	5%	5%	5%	7%
grade 4 events	8143	8645	8098	8291	8892	24629
	5%	5%	5%	5%	5%	6%
grade 5 events	1155	1162	1089	1158	1303	5323
	0%	0%	0%	0%	0%	1%
grade 6 events	18699	19445	18487	18167	22703	114184
	12%	12%	12%	12%	14%	31%
grade 7 events	14003	13888	14553	14321	14733	30152
	9%	9%	10%	9%	9%	8%

2.2 Compared Parameters

Parameter	Planned	Actual	Parameter	Planned	Actual
Instrument	ACIS	ACIS	Obspar format version number	6	6
Detector	ACIS-012367	ACIS-012367	Obspar file type	PREDICTED	ACTUAL
Grating	NONE	NONE	Obspar update status	NONE	UPDATED
Data mode	FAINT	FAINT	On-chip summing requested	N	N
Observation mode	SECONDARY	SECONDARY	Subarray requested	NONE	NONE
Pointing RA	0	321.4775936477091	Alternating exposures requested	N	N
Pointing Dec	0	0.01788880373339456	Primary exposure time	3.2	3.2
Pointing Roll	0.0	108.7600113104969			
SIM focus pos (mm)	-0.782348	-1.428180813131781			
SIM defocus (mm)	0	0.1051558262725154			
SIM translation stage pos (mm)	-233.592463	250.466033080201			
SIM translation stage offset (mm)	0	-0.01005468664627074			
Observation start time	106225101.002604	106225100.23413			
Observation start date	2001-05-14T10:58:21	2001-05-14T10:58:20			
Observation end time	106234770.852979	106234770.08451			
Observation end date	2001-05-14T13:39:31	2001-05-14T13:39:30			
Read mode	TIMED	TIMED			

2.3 Aspect

2.4 Star Slots

2.5 FID Slots

A Summary

A.1 Status

V&V Scientist	Jen Lauer
V&V Date (YYYY-MM-DD)	2006.11.22
V&V Edition	1
V&V Disposition and Status	OK
V&V Charge Time	4.91631432

A.2 Comments