

# V&V Reference Report

## L2 ASCDS Version : 7.6.9

Observation 61625 - L2 Version 001  
Chandra X-Ray Center

L2 Processing Date : Nov 21 2006

## Contents

<b>1</b>	<b>Front</b>	<b>2</b>
<b>2</b>	<b>OBI</b>	<b>3</b>
2.1	OBI . . . . .	3
2.1.1	Images . . . . .	3
2.1.2	Bias . . . . .	3
2.1.3	Parameters . . . . .	4
2.1.4	Events . . . . .	4
2.2	Compared Parameters . . . . .	5
2.3	Aspect . . . . .	6
2.4	Star Slots . . . . .	8
2.5	FID Slots . . . . .	8
<b>A</b>	<b>Summary</b>	<b>9</b>
A.1	Status . . . . .	9
A.2	Comments . . . . .	9

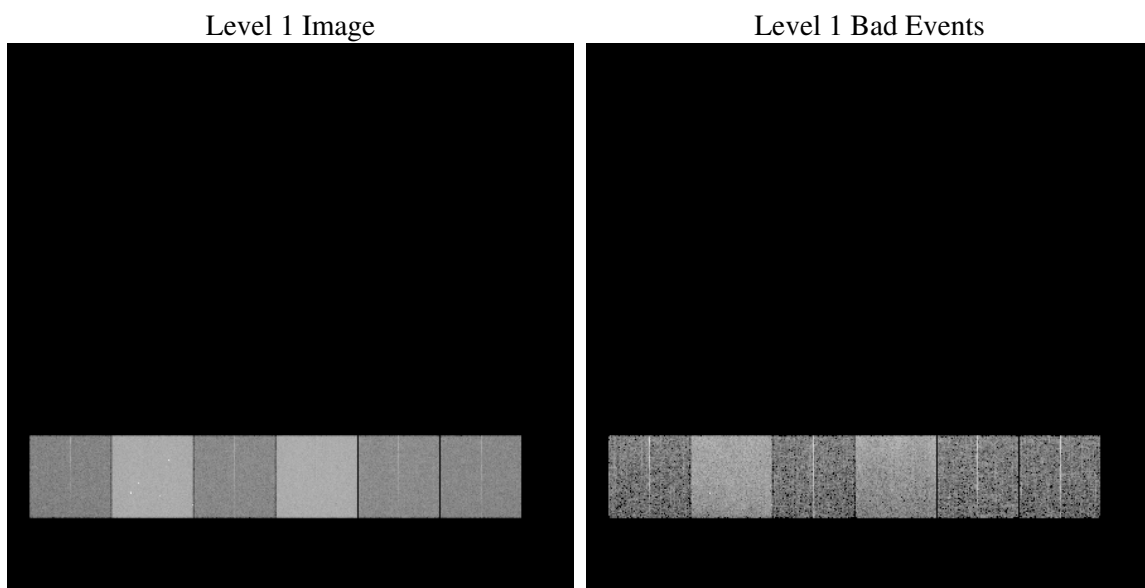
# 1 Front

seq_num	&#160
obs_id	61625
title	ACIS-456789 diagnostics
observer	CHANDRA engineering request/realtime commanding
object	&#160
dtcycle	0
cycle	P
ra_targ	0.0
dec_targ	0.0
ra_nom	259.97766183785
dec_nom	-14.981159974587
roll_nom	106.22195479511
revision	2
ontime	4740.4654620141
livetime	4680.4388339684
ontime4	1545.5847809464
ontime5	5090.4888299704
ontime6	1719.8531582057
ontime7	4740.4654620141
ontime8	1813.8433478773
ontime9	1716.6120384634
l2events	1005315

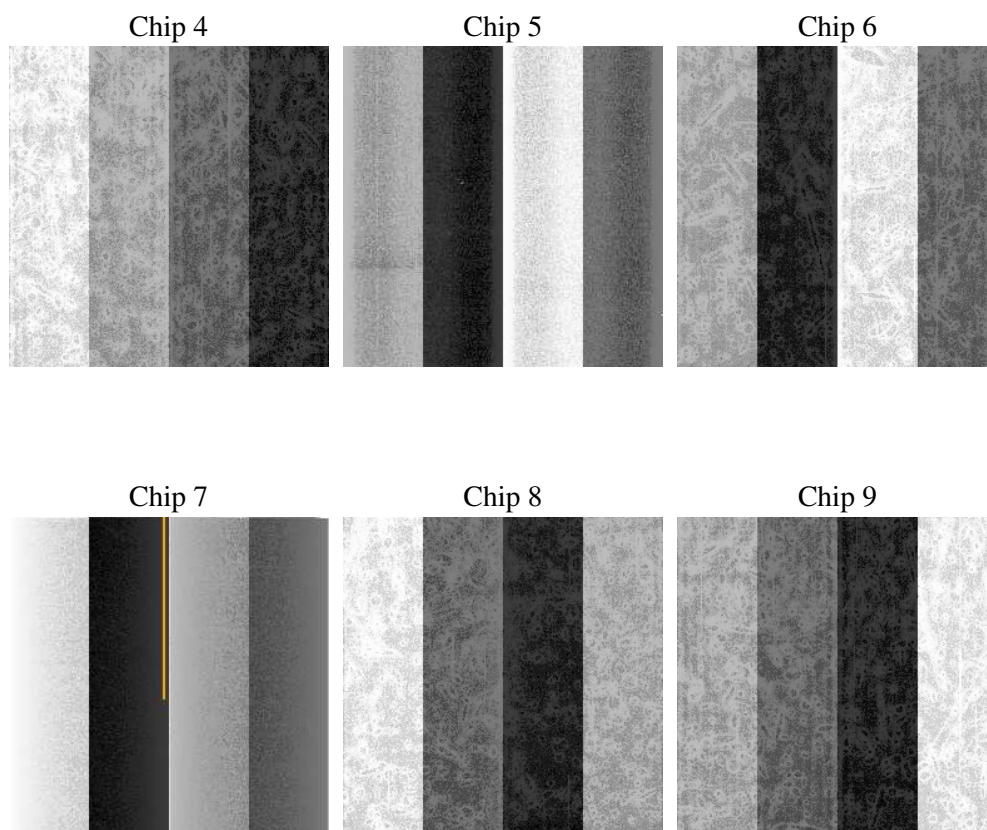
## 2 OBI

### 2.1 OBI

#### 2.1.1 Images



#### 2.1.2 Bias



### 2.1.3 Parameters

obi_num	0
ascdsver	7.6.9
caldbver	3.2.4
date	2006-11-21T23:25:09
revision	2

sched_exp_time	0.0
ontime	4803.181837067
ontime4	1565.4204319715
ontime5	5156.4462051541
ontime6	1740.4365615845
ontime7	4803.181837067
ontime8	1834.426751256
ontime9	1737.1954418421
l1events	1224785

### 2.1.4 Events

	ccd 4	ccd 5	ccd 6	ccd 7	ccd 8	ccd 9
level 1 events	115375	346992	135169	352474	145009	129766
rejected events	20308	51536	20539	41409	22247	19785
rejected %	17%	14%	15%	11%	15%	15%

	ccd 4	ccd 5	ccd 6	ccd 7	ccd 8	ccd 9
grade 0 events	54262	39739	63236	60396	67959	60907
	47%	11%	46%	17%	46%	46%
grade 1 events	395	165	417	150	442	442
	0%	0%	0%	0%	0%	0%
grade 2 events	17120	141289	20061	92949	21954	19637
	14%	40%	14%	26%	15%	15%
grade 3 events	5869	11146	7223	24570	7940	6924
	5%	3%	5%	6%	5%	5%
grade 4 events	5911	10919	7121	24259	7876	6932
	5%	3%	5%	6%	5%	5%
grade 5 events	1029	5826	1215	5481	1374	1183
	0%	1%	0%	1%	0%	0%
grade 6 events	13089	96156	18349	112941	18390	16839
	11%	27%	13%	32%	12%	12%
grade 7 events	17700	41752	17547	31728	19074	16902
	15%	12%	12%	9%	13%	13%

## 2.2 Compared Parameters

Parameter	Planned	Actual	Parameter	Planned	Actual
Instrument	ACIS	ACIS	Obspar format version number	6	6
Detector	ACIS-456789	ACIS-456789	Obspar file type	PREDICTED	ACTUAL
Grating	NONE	NONE	Obspar update status	NONE	UPDATED
Data mode	FAINT	FAINT	On-chip summing requested	N	N
Observation mode	SECONDARY	SECONDARY	Subarray requested	NONE	NONE
Pointing RA	0	259.977661837852	Alternating exposures requested	N	N
Pointing Dec	0	-14.98115997458661	Primary exposure time	0.000000	3.2
Pointing Roll	0.0	106.2219547951099			
SIM focus pos (mm)	-0.684267	-0.7809083437167272			
SIM defocus (mm)	0	0.7524282956875696			
SIM translation stage pos (mm)	-190.132523	250.466033080201			
SIM translation stage offset (mm)	0	-0.01005468664627074			
Observation start time	106726772.922	106726772.15363			
Observation start date	2001-05-20T06:19:33	2001-05-20T06:19:32			
Observation end time	106735171.772	106735171.00396			
Observation end date	2001-05-20T08:39:32	2001-05-20T08:39:31			
Read mode	TIMED	TIMED			

## 2.3 Aspect



## **2.4 Star Slots**

## **2.5 FID Slots**



## A Summary

### A.1 Status

V&V Scientist	Jen Lauer
V&V Date (YYYY-MM-DD)	2006.11.22
V&V Edition	1
V&V Disposition and Status	OK
V&V Charge Time	4.74046546

### A.2 Comments