

V&V Reference Report

L2 ASCDS Version : 7.6.9

Observation 61600 - L2 Version 001
Chandra X-Ray Center

L2 Processing Date : Nov 25 2006

Contents

1	Front	2
2	OBI	3
2.1	OBI	3
2.1.1	Images	3
2.1.2	Bias	3
2.1.3	Parameters	4
2.1.4	Events	4
2.2	Compared Parameters	5
2.3	Aspect	6
2.4	Star Slots	8
2.5	FID Slots	8
A	Summary	9
A.1	Status	9
A.2	Comments	9

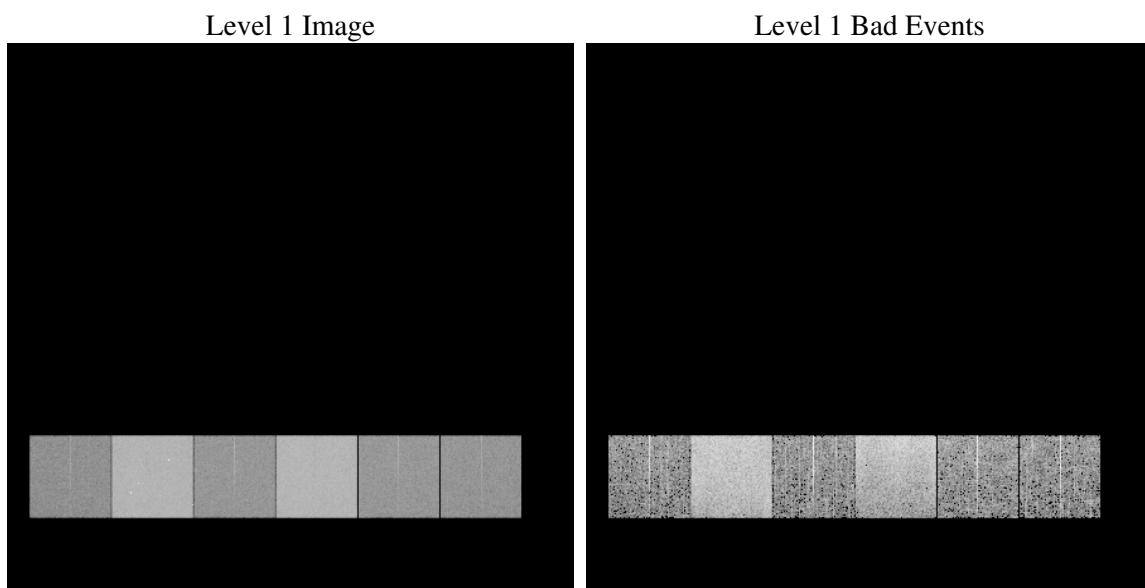
1 Front

seq_num	
obs_id	61600
title	ACIS-456789 diagnostics
observer	CHANDRA engineering request/realtime commanding
object	
dtcycle	0
cycle	P
ra_targ	0.0
dec_targ	0.0
ra_nom	89.981090081363
dec_nom	-25.022972105345
roll_nom	200.56446954408
revision	2
ontime	5949.9910820574
livetime	5874.6487123218
ontime4	2229.4488057047
ontime5	6394.0427764654
ontime6	2514.6189060807
ontime7	5949.9910820574
ontime8	2553.59354572
ontime9	2456.1571759284
l2events	1310765

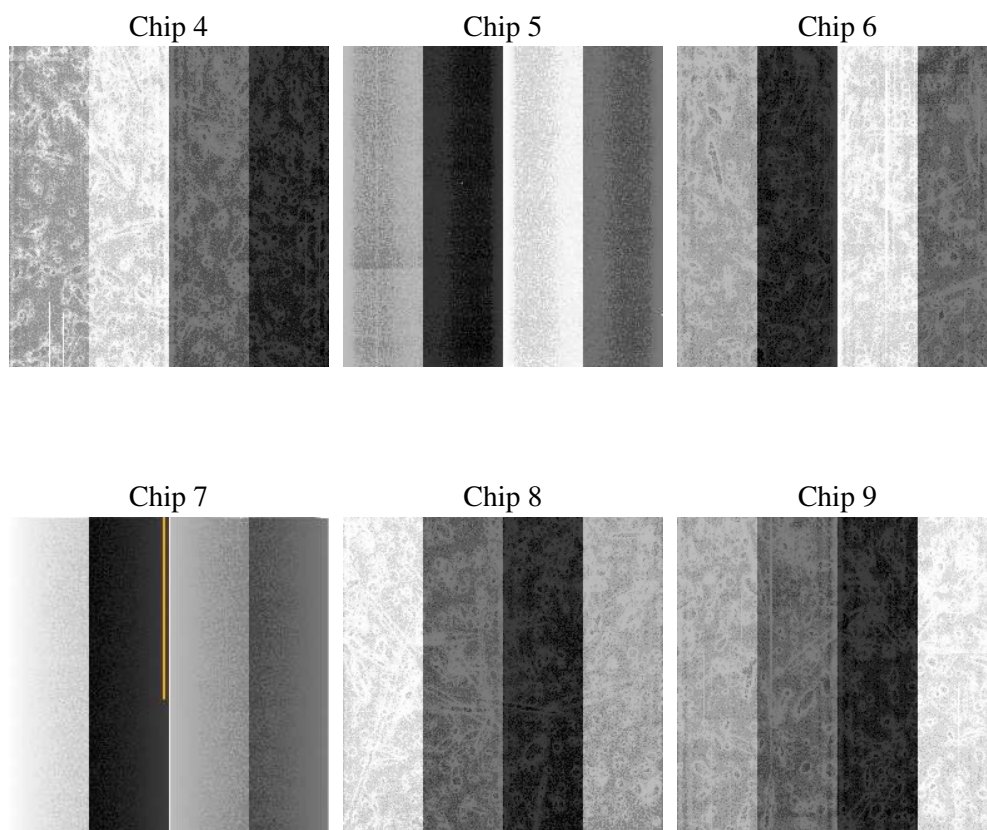
2 OBI

2.1 OBI

2.1.1 Images



2.1.2 Bias



2.1.3 Parameters

obi_num	0
ascdsver	7.6.9
caldsver	3.2.4
date	2006-11-25T09:08:38
revision	2

sched_exp_time	0.0
ontime	5950.4987667948
ontime4	2229.8333704472
ontime5	6394.5094211996
ontime6	2515.0445108265
ontime7	5950.4987667948
ontime8	2553.9370704591
ontime9	2456.7059006691
l1events	1550802

2.1.4 Events

	ccd 4	ccd 5	ccd 6	ccd 7	ccd 8	ccd 9
level 1 events	156758	411662	187971	424597	192002	177812
rejected events	18840	56715	20197	45763	21480	19666
rejected %	12%	13%	10%	10%	11%	11%

	ccd 4	ccd 5	ccd 6	ccd 7	ccd 8	ccd 9
grade 0 events	78245	43361	91428	70025	94093	86622
	49%	10%	48%	16%	49%	48%
grade 1 events	449	120	488	169	502	423
	0%	0%	0%	0%	0%	0%
grade 2 events	24404	171198	29061	113768	30076	27944
	15%	41%	15%	26%	15%	15%
grade 3 events	8460	11890	10271	28735	10804	9759
	5%	2%	5%	6%	5%	5%
grade 4 events	8329	11803	10430	27917	10804	9844
	5%	2%	5%	6%	5%	5%
grade 5 events	1314	6677	1560	6383	1616	1438
	0%	1%	0%	1%	0%	0%
grade 6 events	18480	116695	26584	138389	24745	23977
	11%	28%	14%	32%	12%	13%
grade 7 events	17077	49918	18149	39211	19362	17805
	10%	12%	9%	9%	10%	10%

2.2 Compared Parameters

Parameter	Planned	Actual	Parameter	Planned	Actual
Instrument	ACIS	ACIS	Obspar format version number	6	6
Detector	ACIS-456789	ACIS-456789	Obspar file type	PREDICTED	ACTUAL
Grating	NONE	NONE	Obspar update status	NONE	UPDATED
Data mode	FAINT	FAINT	On-chip summing requested	N	N
Observation mode	SECONDARY	SECONDARY	Subarray requested	NONE	NONE
Pointing RA	0	89.9810900813634	Alternating exposures requested	N	N
Pointing Dec	0	-25.02297210534528	Primary exposure time	0.000000	3.2
Pointing Roll	0.0	200.5644695440771			
SIM focus pos (mm)	-0.684267	-0.7809083437167272			
SIM defocus (mm)	0	0.7524282956875696			
SIM translation stage pos (mm)	-190.132523	250.466033080201			
SIM translation stage offset (mm)	0	-0.01005468664627074			
Observation start time	108082606.075	108082605.30643			
Observation start date	2001-06-04T22:56:46	2001-06-04T22:56:45			
Observation end time	108105014.626	108105013.8573			
Observation end date	2001-06-05T05:10:15	2001-06-05T05:10:13			
Read mode	TIMED	TIMED			

2.3 Aspect

2.4 Star Slots

2.5 FID Slots

A Summary

A.1 Status

V&V Scientist	Beth Sundheim
V&V Date (YYYY-MM-DD)	2006.11.27
V&V Edition	1
V&V Disposition and Status	OK
V&V Charge Time	5.94999108

A.2 Comments