

# V&V Reference Report

## L2 ASCDS Version : 8.4.5

Observation 61599 - L2 Version 3  
Chandra X-Ray Center

L2 Processing Date : Sep 17 2012

## Contents

<b>1</b>	<b>Front</b>	<b>2</b>
<b>2</b>	<b>OBI</b>	<b>3</b>
2.1	OBI . . . . .	3
2.1.1	Images . . . . .	3
2.1.2	Bias . . . . .	3
2.1.3	Parameters . . . . .	4
2.1.4	Events . . . . .	4
2.2	Compared Parameters . . . . .	5
2.3	Star Slots . . . . .	6
2.4	FID Slots . . . . .	6
<b>A</b>	<b>Summary</b>	<b>7</b>
A.1	Status . . . . .	7
A.2	Comments . . . . .	7

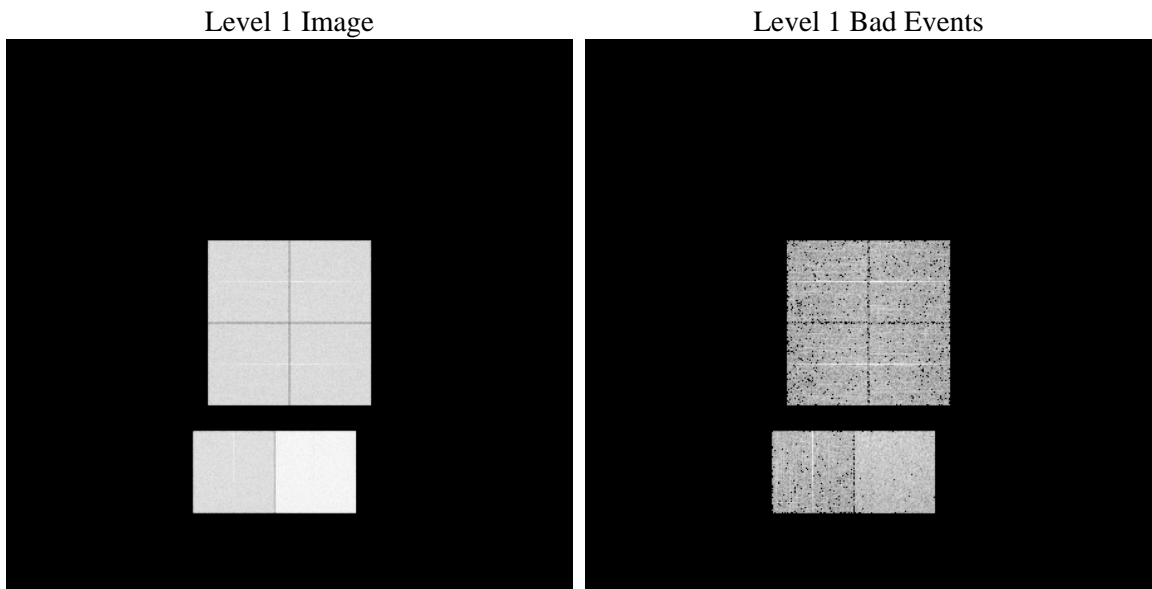
# 1 Front

seq_num	&#160	Sequence number
obs_id	61599	Observation id
title	ACIS-012367 diagnostics	Proposal title
observer	CHANDRA engineering request/realtime commanding	Principal investig
object	&#160	Source name
dtcycle	0	&#160
cycle	P	events from which exps? Prim/Second/Both
ra_targ	0.0	Observer's specified target RA [deg]
dec_targ	0.0	Observer's specified target Dec [deg]
ra_nom	324.97628764336	Nominal RA [deg]
dec_nom	-44.976692719362	Nominal Dec [deg]
roll_nom	93.104705849266	Nominal Roll [deg]
revision	3	Processing version of data
ontime	6538.8606698513	Sum of GTIs [s]
livetime	6456.0616788204	Livetime [s]
ontime0	2633.5138412267	Sum of GTIs [s]
ontime1	2663.8644232452	Sum of GTIs [s]
ontime2	2542.8468212932	Sum of GTIs [s]
ontime3	2589.3210615218	Sum of GTIs [s]
ontime6	2796.7471725792	Sum of GTIs [s]
ontime7	6538.8606698513	Sum of GTIs [s]
l2events	1236281	Number of level 2 events

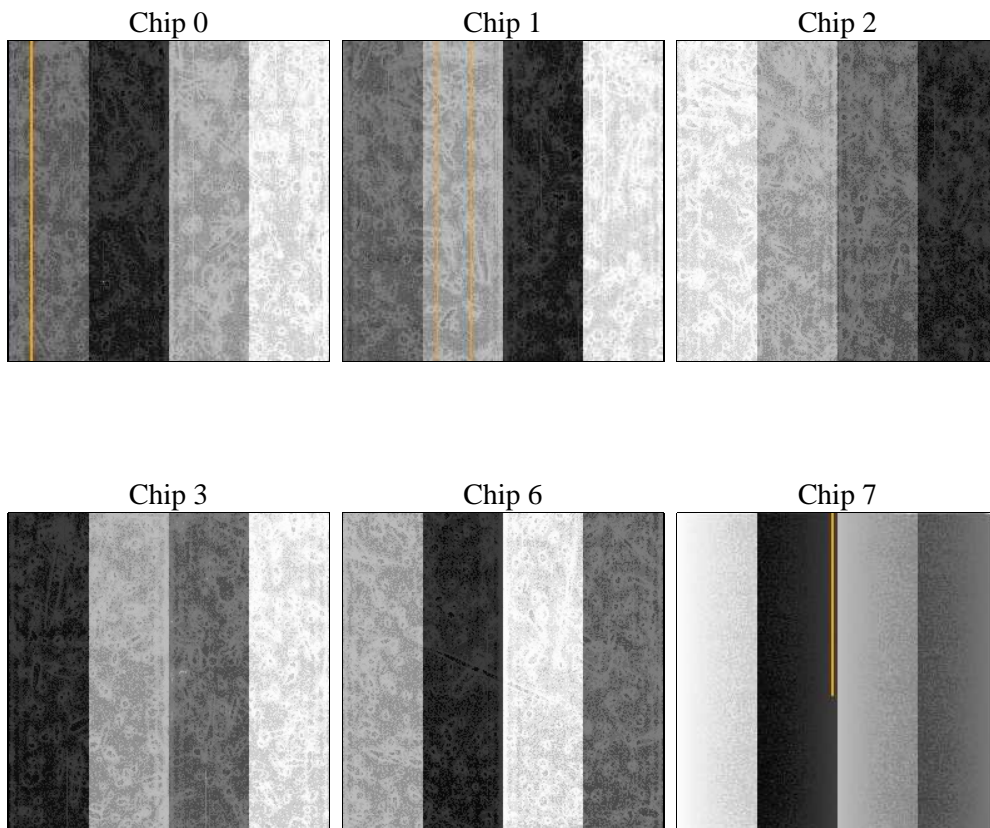
## 2 OBI

### 2.1 OBI

#### 2.1.1 Images



#### 2.1.2 Bias



### 2.1.3 Parameters

obi_num	0	Obi number	sched_exp_time	0.0	[s] Scheduled observation exposure time
ascdsver	8.4.5	Processing system revision	ontime	6538.8606698513	Sum of GTIs [s]
caldsver	4.5.1.1	&#160	ontime0	2633.5138412267	Sum of GTIs [s]
date	2012-09-17T21:00:16	Date and time of file creation	ontime1	2663.8644232452	Sum of GTIs [s]
revision	3	Processing version of data	ontime2	2542.8468212932	Sum of GTIs [s]
			ontime3	2589.3210615218	Sum of GTIs [s]
			ontime6	2796.7471725792	Sum of GTIs [s]
			ontime7	6538.8606698513	Sum of GTIs [s]
			l1events	1427122	Number of level 1 events

### 2.1.4 Events

	ccd 0	ccd 1	ccd 2	ccd 3	ccd 6	ccd 7		ccd 0	ccd 1	ccd 2	ccd 3	ccd 6	ccd 7
level 1 events	186706	189337	184408	187724	210427	468520	grade 0 events	91718	93517	91478	93489	103050	111468
rejected events	20092	20122	20450	20822	22398	34861		49%	49%	49%	49%	48%	23%
rejected %	10%	10%	11%	11%	10%	7%	grade 1 events	459	522	481	555	516	302
								0%	0%	0%	0%	0%	0%
							grade 2 events	29341	29897	28865	29259	32585	96225
								15%	15%	15%	15%	15%	20%
							grade 3 events	10604	10804	10167	10559	11525	44110
								5%	5%	5%	5%	5%	9%
							grade 4 events	10425	10708	10224	10681	11679	44088
								5%	5%	5%	5%	5%	9%
							grade 5 events	1430	1544	1351	1519	1774	7395
								0%	0%	0%	0%	0%	1%
							grade 6 events	24526	24501	23224	23104	29415	137768
								13%	12%	12%	12%	13%	29%
							grade 7 events	18203	17844	18618	18558	19883	27164
								9%	9%	10%	9%	9%	5%

## 2.2 Compared Parameters

Parameter	Planned	Actual	Parameter	Planned	Actual
Instrument	ACIS	ACIS	Obspar format version number	7	7
Detector	ACIS-012367	ACIS-012367	Obspar file type	PREDICTED	ACTUAL
Grating	NONE	NONE	Obspar update status	NONE	UPDATED
Data mode	FAINT	FAINT	On-chip summing requested	N	N
Observation mode	SECONDARY	SECONDARY	Subarray requested	NONE	NONE
[deg] Pointing RA	0	324.9762876433614	Alternating exposures requested	N	N
[deg] Pointing Dec	0	-44.97669271936189	[s] Primary exposure time	3.2	3.2
[deg] Pointing Roll	0.0	93.10470584926614			
[mm] SIM focus pos	-0.782348	-0.6828225247311905			
[mm] SIM defocus	0	0.8505141146731063			
[mm] SIM translation stage pos	-233.592463	250.466033080201			
[mm] SIM translation stage offset	0	-0.01005468664627074			
[s] Observation start time (MET)	108279512.682565	108279511.91409			
Observation start date	2001-06-07T05:38:33	2001-06-07T05:38:31			
[s] Observation end time (MET)	108290879.933008	108290879.16454			
Observation end date	2001-06-07T08:48:00	2001-06-07T08:47:59			
Read mode	TIMED	TIMED			

## **2.3 Star Slots**

## **2.4 FID Slots**

## A Summary

### A.1 Status

V&V Scientist	Jen Lauer
V&V Date (YYYY-MM-DD)	2012.09.20
V&V Edition	1
V&V Disposition and Status	OK
V&V Charge Time	6.5388606698513

### A.2 Comments