

# V&V Reference Report

## L2 ASCDS Version : 7.6.9

Observation 61589 - L2 Version 001  
Chandra X-Ray Center

L2 Processing Date : Dec 8 2006

## Contents

<b>1</b>	<b>Front</b>	<b>2</b>
<b>2</b>	<b>OBI</b>	<b>3</b>
2.1	OBI . . . . .	3
2.1.1	Images . . . . .	3
2.1.2	Bias . . . . .	3
2.1.3	Parameters . . . . .	4
2.1.4	Events . . . . .	4
2.2	Compared Parameters . . . . .	5
2.3	Aspect . . . . .	6
2.4	Star Slots . . . . .	8
2.5	FID Slots . . . . .	8
<b>A</b>	<b>Summary</b>	<b>9</b>
A.1	Status . . . . .	9
A.2	Comments . . . . .	9

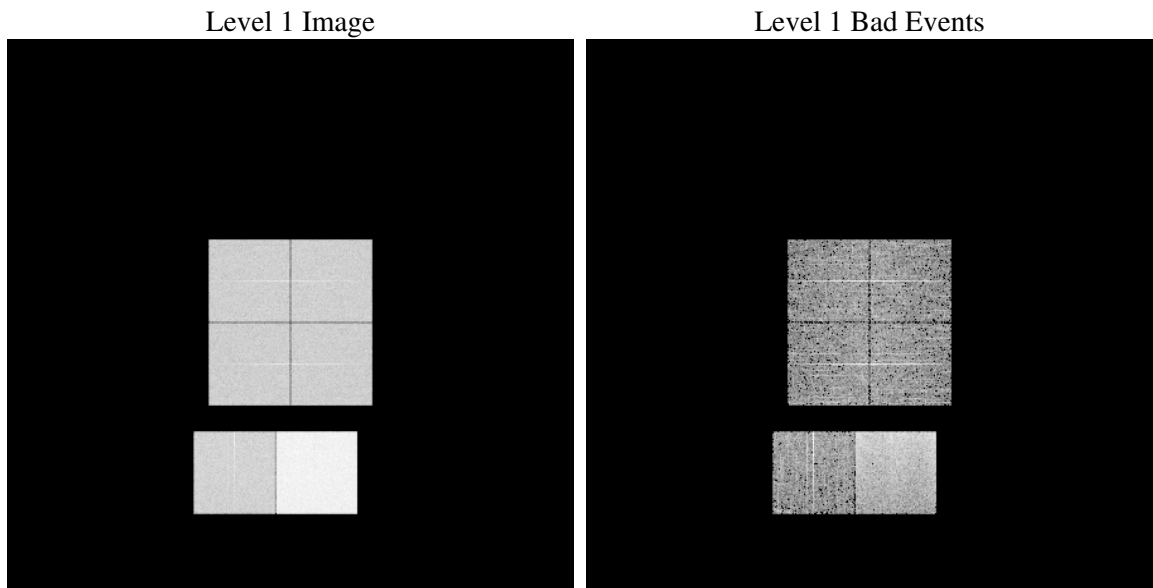
# 1 Front

seq_num	&#160
obs_id	61589
title	ACIS-012367 diagnostics
observer	CHANDRA engineering request/realtime commanding
object	&#160
dtcycle	0
cycle	P
ra_targ	0.0
dec_targ	0.0
ra_nom	154.00185238555
dec_nom	-24.028596135083
roll_nom	240.7094398664
revision	2
ontime	6598.3714748919
livetime	6514.8189222145
ontime0	2663.859152928
ontime1	2689.7558725774
ontime2	2566.5969210118
ontime3	2569.7870626599
ontime6	2803.3461950123
ontime7	6598.3714748919
l2events	1224500

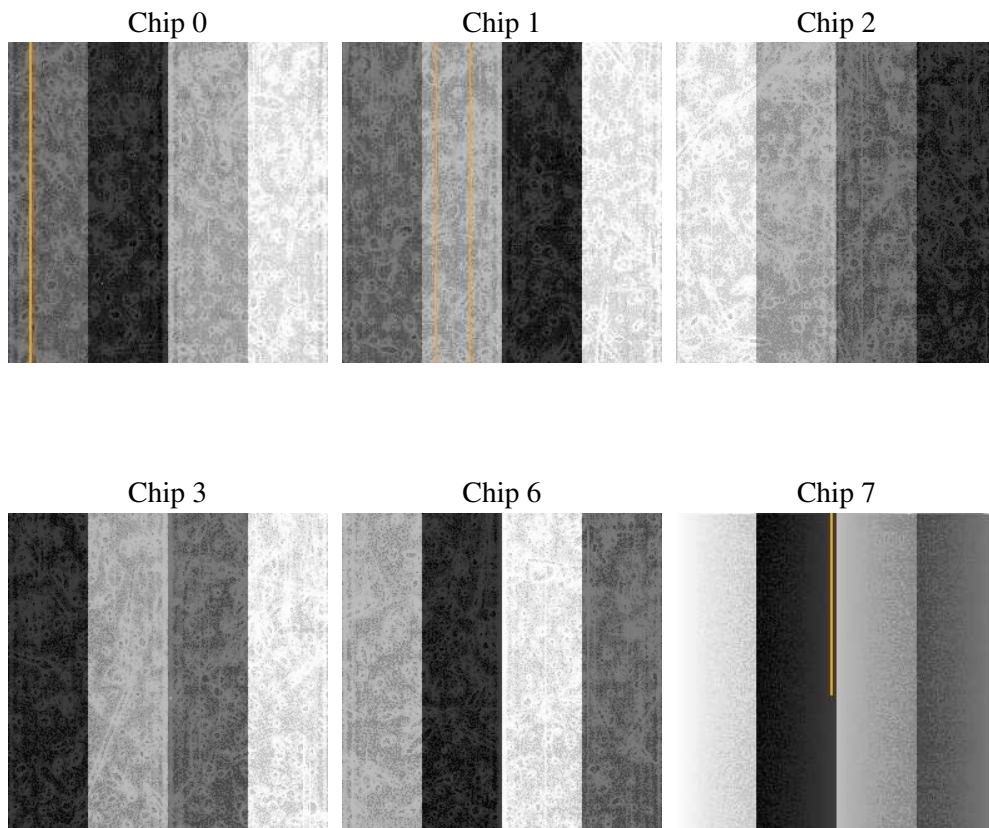
## 2 OBI

### 2.1 OBI

#### 2.1.1 Images



#### 2.1.2 Bias



### 2.1.3 Parameters

obi_num	0
ascdsver	7.6.9
caldbver	3.2.4
date	2006-12-08T15:58:33
revision	2

sched_exp_time	0.0
ontime	6598.6853243262
ontime0	2664.131962359
ontime1	2690.060342133
ontime2	2566.9013905674
ontime3	2570.1419520974
ontime6	2803.4958844483
ontime7	6598.6853243262
l1events	1427409

### 2.1.4 Events

	ccd 0	ccd 1	ccd 2	ccd 3	ccd 6	ccd 7
level 1 events	188240	190036	184810	185910	208781	469632
rejected events	20104	19974	20488	21090	22034	47457
rejected %	10%	10%	11%	11%	10%	10%

	ccd 0	ccd 1	ccd 2	ccd 3	ccd 6	ccd 7
grade 0 events	92402	94386	91652	92512	101573	82355
	49%	49%	49%	49%	48%	17%
grade 1 events	455	490	476	472	496	185
	0%	0%	0%	0%	0%	0%
grade 2 events	29844	29766	28839	28744	32420	123867
	15%	15%	15%	15%	15%	26%
grade 3 events	10623	10697	10549	10437	11741	33623
	5%	5%	5%	5%	5%	7%
grade 4 events	10784	10646	10138	10452	11599	32741
	5%	5%	5%	5%	5%	6%
grade 5 events	1489	1456	1414	1476	1609	7065
	0%	0%	0%	0%	0%	1%
grade 6 events	24483	24567	23144	22675	29414	149589
	13%	12%	12%	12%	14%	31%
grade 7 events	18160	18028	18598	19142	19929	40207
	9%	9%	10%	10%	9%	8%

## 2.2 Compared Parameters

Parameter	Planned	Actual	Parameter	Planned	Actual
Instrument	ACIS	ACIS	Obspar format version number	6	6
Detector	ACIS-012367	ACIS-012367	Obspar file type	PREDICTED	ACTUAL
Grating	NONE	NONE	Obspar update status	NONE	UPDATED
Data mode	FAINT	FAINT	On-chip summing requested	N	N
Observation mode	SECONDARY	SECONDARY	Subarray requested	NONE	NONE
Pointing RA	0	154.0018523855501	Alternating exposures requested	N	N
Pointing Dec	0	-24.0285961350834	Primary exposure time	3.2	3.2
Pointing Roll	0.0	240.709439866398			
SIM focus pos (mm)	-0.782348	-0.6828225247311905			
SIM defocus (mm)	0	0.8505141146731063			
SIM translation stage pos (mm)	-233.592463	250.466033080201			
SIM translation stage offset (mm)	0	-0.01005468664627074			
Observation start time	108964632.959255	108964632.19079			
Observation start date	2001-06-15T03:57:13	2001-06-15T03:57:12			
Observation end time	109001303.360684	109001302.59222			
Observation end date	2001-06-15T14:08:23	2001-06-15T14:08:22			
Read mode	TIMED	TIMED			

## 2.3 Aspect



## 2.4 Star Slots

## 2.5 FID Slots



## A Summary

### A.1 Status

V&V Scientist	Beth Sundheim
V&V Date (YYYY-MM-DD)	2006.12.08
V&V Edition	1
V&V Disposition and Status	OK
V&V Charge Time	6.59837147

### A.2 Comments