

# V&V Reference Report

## L2 ASCDS Version : 7.6.9

Observation 61579 - L2 Version 001  
Chandra X-Ray Center

L2 Processing Date : Dec 8 2006

## Contents

<b>1</b>	<b>Front</b>	<b>2</b>
<b>2</b>	<b>OBI</b>	<b>3</b>
2.1	OBI . . . . .	3
2.1.1	Images . . . . .	3
2.1.2	Bias . . . . .	3
2.1.3	Parameters . . . . .	4
2.1.4	Events . . . . .	4
2.2	Compared Parameters . . . . .	5
2.3	Aspect . . . . .	6
2.4	Star Slots . . . . .	8
2.5	FID Slots . . . . .	8
<b>A</b>	<b>Summary</b>	<b>9</b>
A.1	Status . . . . .	9
A.2	Comments . . . . .	9

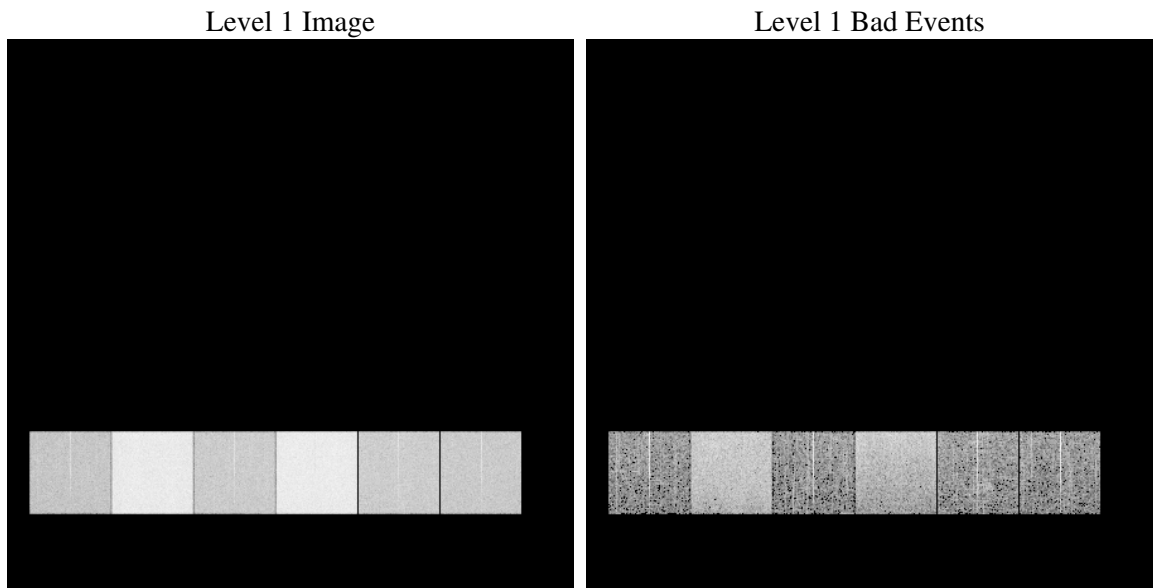
# 1 Front

seq_num	&#160
obs_id	61579
title	ACIS-456789 diagnostics
observer	CHANDRA engineering request/realtime commanding
object	&#160
dtcycle	0
cycle	P
ra_targ	0.0
dec_targ	0.0
ra_nom	301.98759116267
dec_nom	-33.973242688114
roll_nom	78.286500484592
revision	2
ontime	5987.0824047476
livetime	5911.2703623505
ontime4	2284.284483999
ontime5	6447.299249351
ontime6	2507.8750239909
ontime7	5987.0824047476
ontime8	2559.8138933629
ontime9	2481.8236139715
l2events	1310410

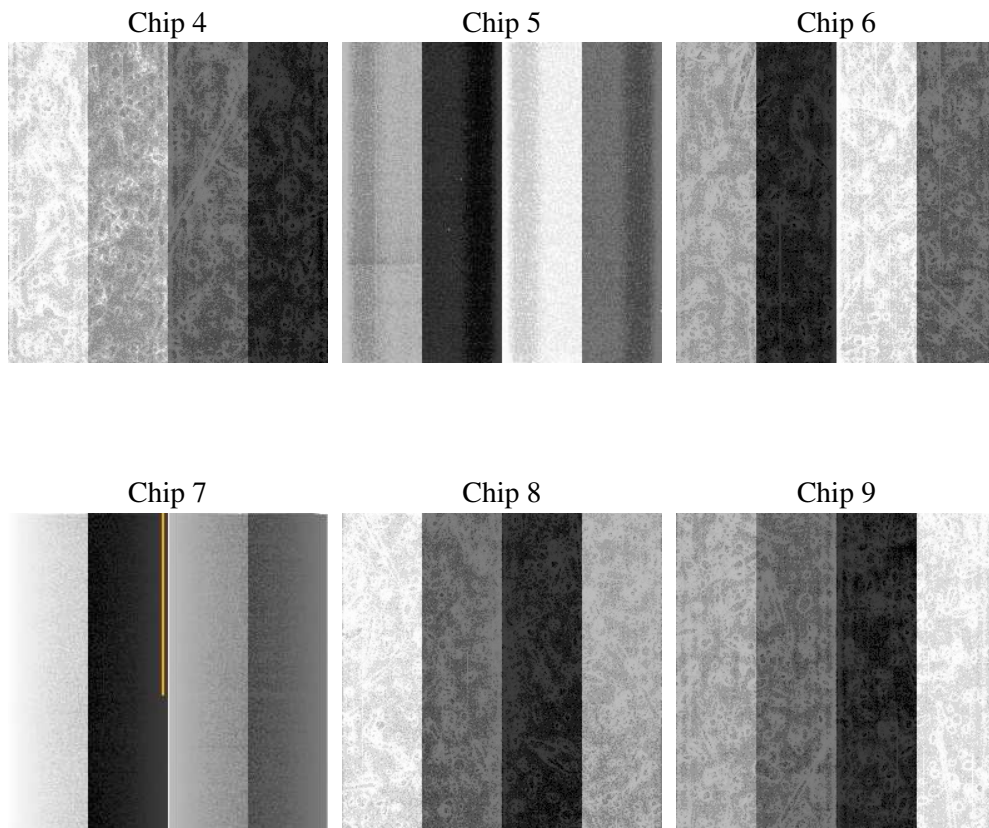
## 2 OBI

### 2.1 OBI

#### 2.1.1 Images



#### 2.1.2 Bias



### 2.1.3 Parameters

obi_num	0
ascdsver	7.6.9
caldsver	3.2.4
date	2006-12-08T16:20:09
revision	2

sched_exp_time	0.0
ontime	5989.3952897191
ontime4	2284.9311705828
ontime5	6449.6121343225
ontime6	2508.5627505779
ontime7	5989.3952897191
ontime8	2560.4195399433
ontime9	2482.6344605535
l1events	1549138

### 2.1.4 Events

	ccd 4	ccd 5	ccd 6	ccd 7	ccd 8	ccd 9
level 1 events	159197	411433	186489	423111	191462	177446
rejected events	20132	56364	20386	44095	22243	20047
rejected %	12%	13%	10%	10%	11%	11%

	ccd 4	ccd 5	ccd 6	ccd 7	ccd 8	ccd 9
grade 0 events	78845	43108	90924	71606	93187	86638
	49%	10%	48%	16%	48%	48%
grade 1 events	447	109	447	194	461	468
	0%	0%	0%	0%	0%	0%
grade 2 events	24805	171039	28675	112716	29762	27828
	15%	41%	15%	26%	15%	15%
grade 3 events	8539	12230	10077	28992	10665	9555
	5%	2%	5%	6%	5%	5%
grade 4 events	8485	12191	10223	28701	10468	9821
	5%	2%	5%	6%	5%	5%
grade 5 events	1239	6780	1426	6398	1706	1501
	0%	1%	0%	1%	0%	0%
grade 6 events	18391	116501	26204	137001	25137	23557
	11%	28%	14%	32%	13%	13%
grade 7 events	18446	49475	18513	37503	20076	18078
	11%	12%	9%	8%	10%	10%

## 2.2 Compared Parameters

Parameter	Planned	Actual
Instrument	ACIS	ACIS
Detector	ACIS-456789	ACIS-456789
Grating	NONE	NONE
Data mode	FAINT	FAINT
Observation mode	SECONDARY	SECONDARY
Pointing RA	0	301.9875911626742
Pointing Dec	0	-33.97324268811396
Pointing Roll	0.0	78.28650048459228
SIM focus pos (mm)	-0.684267	-0.6828225247311905
SIM defocus (mm)	0	0.8505141146731063
SIM translation stage pos (mm)	-190.132523	250.4635187648994
SIM translation stage offset (mm)	0	-0.007540371344731511
Observation start time	109452731.828	109452731.05983
Observation start date	2001-06-20T19:32:12	2001-06-20T19:32:11
Observation end time	109475777.929	109475777.16073
Observation end date	2001-06-21T01:56:18	2001-06-21T01:56:17
Read mode	TIMED	TIMED

Parameter	Planned	Actual
Obspar format version number	6	6
Obspar file type	PREDICTED	ACTUAL
Obspar update status	NONE	UPDATED
On-chip summing requested	N	N
Subarray requested	NONE	NONE
Alternating exposures requested	N	N
Primary exposure time	0.000000	3.2

## 2.3 Aspect



## **2.4 Star Slots**

## **2.5 FID Slots**

## A Summary

### A.1 Status

V&V Scientist	Beth Sundheim
V&V Date (YYYY-MM-DD)	2006.12.08
V&V Edition	1
V&V Disposition and Status	OK
V&V Charge Time	5.9870824

### A.2 Comments