

# V&V Reference Report

## L2 ASCDS Version : 8.4.5

Observation 61567 - L2 Version 3  
Chandra X-Ray Center

L2 Processing Date : Sep 20 2012

## Contents

<b>1</b>	<b>Front</b>	<b>2</b>
<b>2</b>	<b>OBI</b>	<b>3</b>
2.1	OBI . . . . .	3
2.1.1	Images . . . . .	3
2.1.2	Bias . . . . .	3
2.1.3	Parameters . . . . .	4
2.1.4	Events . . . . .	4
2.2	Compared Parameters . . . . .	5
2.3	Star Slots . . . . .	6
2.4	FID Slots . . . . .	6
<b>A</b>	<b>Summary</b>	<b>7</b>
A.1	Status . . . . .	7
A.2	Comments . . . . .	7

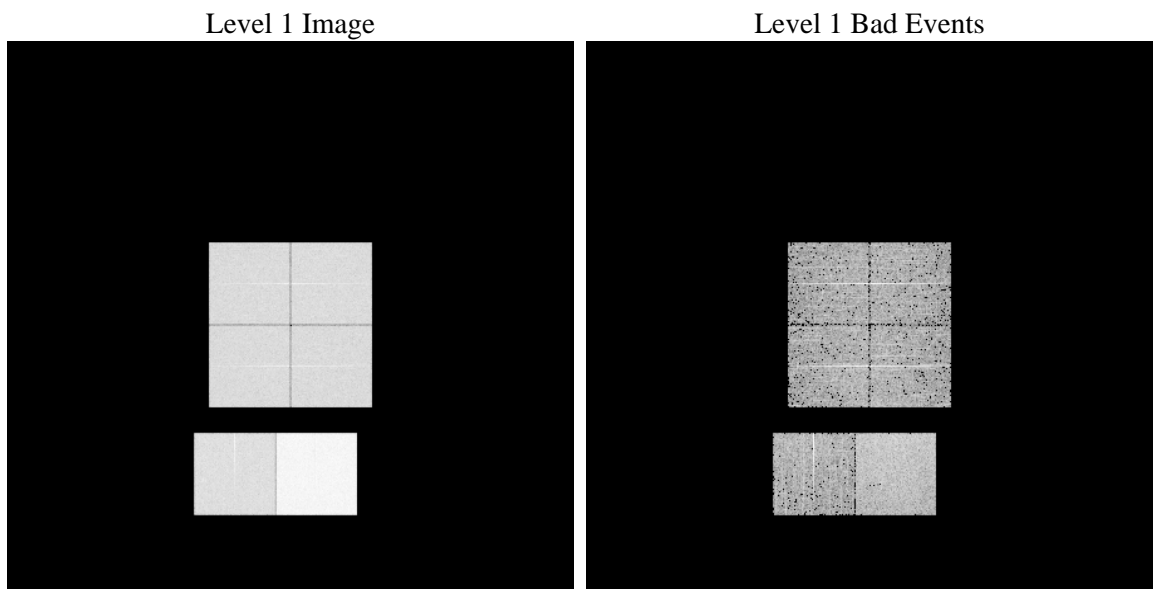
# 1 Front

seq_num	&#160	Sequence number
obs_id	61567	Observation id
title	ACIS-012367 diagnostics	Proposal title
observer	CHANDRA engineering request/realtime commanding	Principal investig
object	&#160	Source name
dtycle	0	&#160
cycle	P	events from which exps? Prim/Second/Both
ra_targ	0.0	Observer's specified target RA [deg]
dec_targ	0.0	Observer's specified target Dec [deg]
ra_nom	304.98269095578	Nominal RA [deg]
dec_nom	-24.976094280893	Nominal Dec [deg]
roll_nom	90.513956386441	Nominal Roll [deg]
revision	3	Processing version of data
ontime	6724.81832546	Sum of GTIs [s]
livetime	6639.6646266235	Livetime [s]
ontime0	2631.2922845334	Sum of GTIs [s]
ontime1	2693.0354919136	Sum of GTIs [s]
ontime2	2566.553504914	Sum of GTIs [s]
ontime3	2537.2204335183	Sum of GTIs [s]
ontime6	2868.0510832369	Sum of GTIs [s]
ontime7	6724.81832546	Sum of GTIs [s]
l2events	1231303	Number of level 2 events

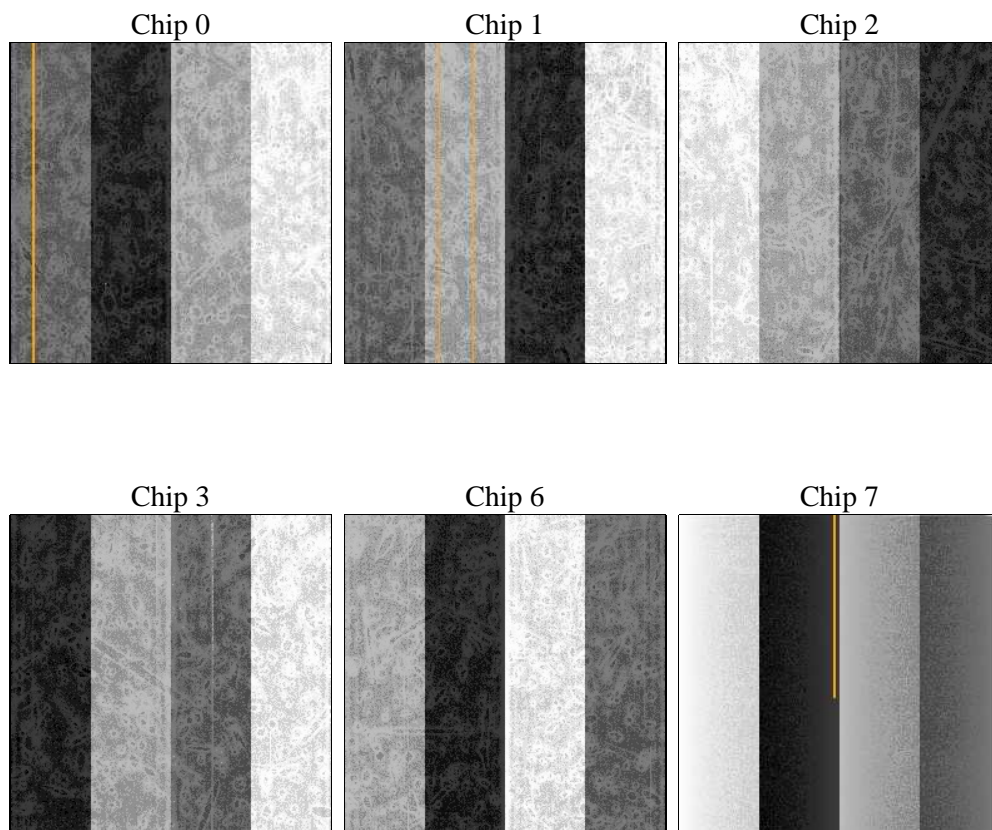
## 2 OBI

### 2.1 OBI

#### 2.1.1 Images



#### 2.1.2 Bias



### 2.1.3 Parameters

obi_num	0	Obi number	sched_exp_time	0.0	[s] Scheduled observation exposure time
ascdsver	8.4.5	Processing system revision	ontime	6724.81832546	Sum of GTIs [s]
caldsver	4.5.1.1	&#160	ontime0	2631.2922845334	Sum of GTIs [s]
date	2012-09-20T18:46:10	Date and time of file creation	ontime1	2693.0354919136	Sum of GTIs [s]
revision	3	Processing version of data	ontime2	2566.553504914	Sum of GTIs [s]
			ontime3	2537.2204335183	Sum of GTIs [s]
			ontime6	2868.0510832369	Sum of GTIs [s]
			ontime7	6724.81832546	Sum of GTIs [s]
			l1events	1424731	Number of level 1 events

### 2.1.4 Events

	ccd 0	ccd 1	ccd 2	ccd 3	ccd 6	ccd 7		ccd 0	ccd 1	ccd 2	ccd 3	ccd 6	ccd 7
level 1 events	183657	188479	184281	182106	211788	474420	grade 0 events	90186	92939	90685	89909	103263	111849
rejected events	19554	20449	21401	21585	23053	36167		49%	49%	49%	49%	48%	23%
rejected %	10%	10%	11%	11%	10%	7%	grade 1 events	527	494	505	525	486	286
								0%	0%	0%	0%	0%	0%
							grade 2 events	28992	29516	28440	28142	32632	97601
								15%	15%	15%	15%	15%	20%
							grade 3 events	10502	10575	10394	10015	11784	44964
								5%	5%	5%	5%	5%	9%
							grade 4 events	10297	10640	10296	10122	11625	44155
								5%	5%	5%	5%	5%	9%
							grade 5 events	1527	1575	1390	1496	1751	7729
								0%	0%	0%	0%	0%	1%
							grade 6 events	24126	24555	23180	22333	29649	140216
								13%	13%	12%	12%	13%	29%
							grade 7 events	17500	18185	19391	19564	20598	27620
								9%	9%	10%	10%	9%	5%

## 2.2 Compared Parameters

Parameter	Planned	Actual	Parameter	Planned	Actual
Instrument	ACIS	ACIS	Obspar format version number	7	7
Detector	ACIS-012367	ACIS-012367	Obspar file type	PREDICTED	ACTUAL
Grating	NONE	NONE	Obspar update status	NONE	UPDATED
Data mode	FAINT	FAINT	On-chip summing requested	N	N
Observation mode	SECONDARY	SECONDARY	Subarray requested	NONE	NONE
[deg] Pointing RA	0	304.9826909557841	Alternating exposures requested	N	N
[deg] Pointing Dec	0	-24.97609428089303	[s] Primary exposure time	0.000000	3.2
[deg] Pointing Roll	0.0	90.51395638644118			
[mm] SIM focus pos	-0.782348	-0.6828225247311905			
[mm] SIM defocus	0	0.8505141146731063			
[mm] SIM translation stage pos	-233.592463	250.466033080201			
[mm] SIM translation stage offset	0	-0.01005468664627074			
[s] Observation start time (MET)	110335306.063	110335305.29427			
Observation start date	2001-07-01T00:41:46	2001-07-01T00:41:45			
[s] Observation end time (MET)	110346533.913	110346533.1447			
Observation end date	2001-07-01T03:48:54	2001-07-01T03:48:53			
Read mode	TIMED	TIMED			

## **2.3 Star Slots**

## **2.4 FID Slots**

## A Summary

### A.1 Status

V&V Scientist	Jen Lauer
V&V Date (YYYY-MM-DD)	2012.09.24
V&V Edition	1
V&V Disposition and Status	OK
V&V Charge Time	6.72481832546

### A.2 Comments