

# V&V Reference Report

## L2 ASCDS Version : 7.6.9

Observation 61562 - L2 Version 001  
Chandra X-Ray Center

L2 Processing Date : Dec 11 2006

## Contents

<b>1</b>	<b>Front</b>	<b>2</b>
<b>2</b>	<b>OBI</b>	<b>3</b>
2.1	OBI . . . . .	3
2.1.1	Images . . . . .	3
2.1.2	Bias . . . . .	3
2.1.3	Parameters . . . . .	4
2.1.4	Events . . . . .	4
2.2	Compared Parameters . . . . .	5
2.3	Aspect . . . . .	6
2.4	Star Slots . . . . .	8
2.5	FID Slots . . . . .	8
<b>A</b>	<b>Summary</b>	<b>9</b>
A.1	Status . . . . .	9
A.2	Comments . . . . .	9

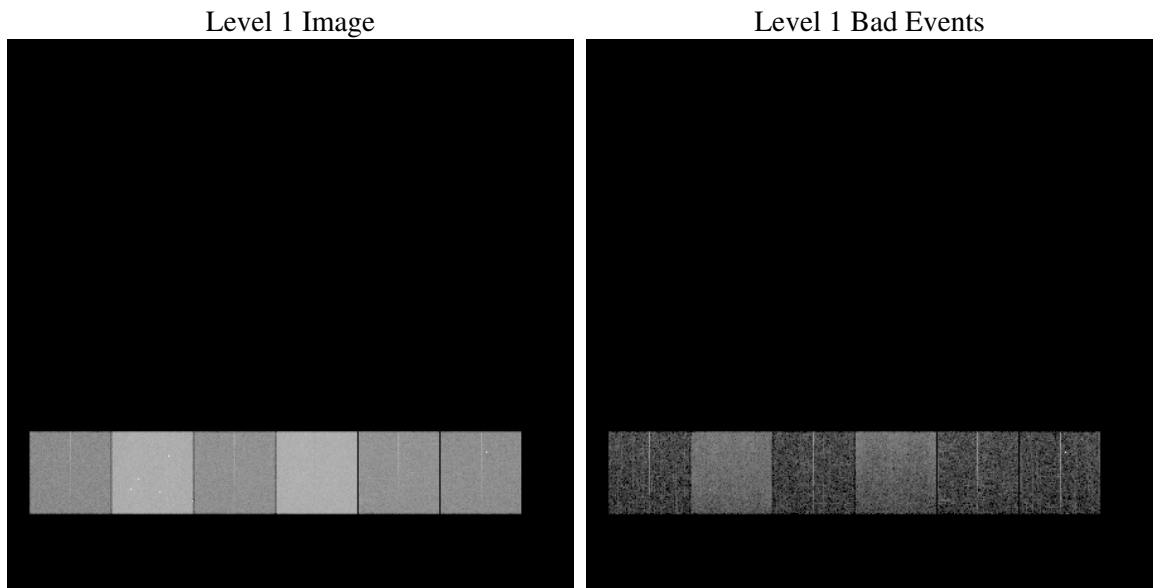
# 1 Front

seq_num	&#160
obs_id	61562
title	ACIS-456789 diagnostics
observer	CHANDRA engineering request/realtime commanding
object	&#160
dtcycle	0
cycle	P
ra_targ	0.0
dec_targ	0.0
ra_nom	294.99166227891
dec_nom	-26.972322790038
roll_nom	72.313560065538
revision	2
ontime	5508.3100440949
livetime	5438.5605056105
ontime4	2111.8648577183
ontime5	5890.7841644883
ontime6	2319.2502674907
ontime7	5508.3100440949
ontime8	2387.3942471594
ontime9	2218.6550373435
l2events	1206852

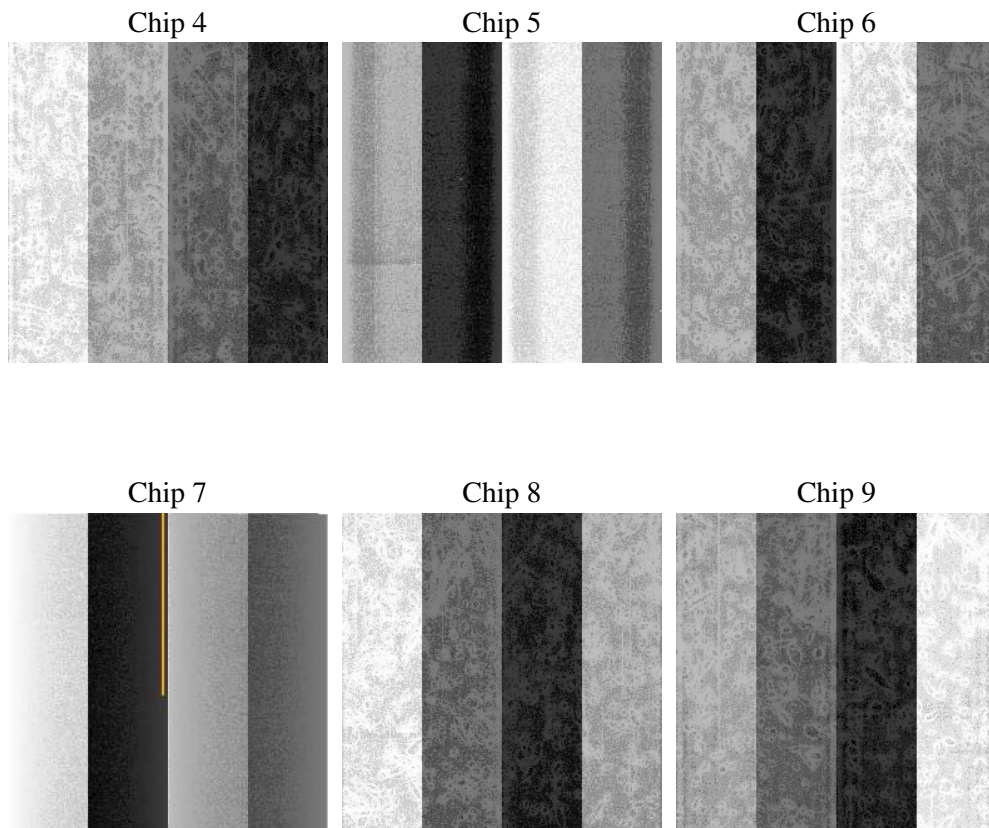
## 2 OBI

### 2.1 OBI

#### 2.1.1 Images



#### 2.1.2 Bias



### 2.1.3 Parameters

obi_num	0
ascdsver	7.6.9
caldsver	3.2.4
date	2006-12-12T02:38:49
revision	2

sched_exp_time	0.0
ontime	5509.7242575884
ontime4	2113.1559512168
ontime5	5892.1573379785
ontime6	2320.5824009925
ontime7	5509.7242575884
ontime8	2388.6443006545
ontime9	2220.1102908403
l1events	1429391

### 2.1.4 Events

	ccd 4	ccd 5	ccd 6	ccd 7	ccd 8	ccd 9
level 1 events	148312	380471	172718	389201	178833	159856
rejected events	18826	51219	18233	40423	20396	18947
rejected %	12%	13%	10%	10%	11%	11%

	ccd 4	ccd 5	ccd 6	ccd 7	ccd 8	ccd 9
grade 0 events	73300	45616	84748	66749	87318	77312
	49%	11%	49%	17%	48%	48%
grade 1 events	430	255	455	155	446	1060
	0%	0%	0%	0%	0%	0%
grade 2 events	22782	155060	26765	103559	27814	25068
	15%	40%	15%	26%	15%	15%
grade 3 events	7997	12095	9519	26931	10039	8655
	5%	3%	5%	6%	5%	5%
grade 4 events	8160	11893	9428	26666	9989	8734
	5%	3%	5%	6%	5%	5%
grade 5 events	1242	6089	1441	5764	1547	1379
	0%	1%	0%	1%	0%	0%
grade 6 events	17583	104778	24363	124975	23277	21140
	11%	27%	14%	32%	13%	13%
grade 7 events	16818	44685	15999	34402	18403	16508
	11%	11%	9%	8%	10%	10%

## 2.2 Compared Parameters

Parameter	Planned	Actual	Parameter	Planned	Actual
Instrument	ACIS	ACIS	Obspar format version number	6	6
Detector	ACIS-456789	ACIS-456789	Obspar file type	PREDICTED	ACTUAL
Grating	NONE	NONE	Obspar update status	NONE	UPDATED
Data mode	FAINT	FAINT	On-chip summing requested	N	N
Observation mode	SECONDARY	SECONDARY	Subarray requested	NONE	NONE
Pointing RA	0	294.9916622789136	Alternating exposures requested	N	N
Pointing Dec	0	-26.97232279003847	Primary exposure time	3.2	3.2
Pointing Roll	0.0	72.31356006553838			
SIM focus pos (mm)	-0.684267	-0.6828225247311905			
SIM defocus (mm)	0	0.8505141146731063			
SIM translation stage pos (mm)	-190.132523	250.466033080201			
SIM translation stage offset (mm)	0	-0.01005468664627074			
Observation start time	110566558.371755	110566557.6033			
Observation start date	2001-07-03T16:55:58	2001-07-03T16:55:57			
Observation end time	110598726.973011	110598726.20456			
Observation end date	2001-07-04T01:52:07	2001-07-04T01:52:06			
Read mode	TIMED	TIMED			

## 2.3 Aspect



## **2.4 Star Slots**

## **2.5 FID Slots**



## A Summary

### A.1 Status

V&V Scientist	Jen Lauer
V&V Date (YYYY-MM-DD)	2006.12.12
V&V Edition	1
V&V Disposition and Status	OK
V&V Charge Time	5.50831004

### A.2 Comments