

# V&V Reference Report

## L2 ASCDS Version : 7.6.9

Observation 61561 - L2 Version 001  
Chandra X-Ray Center

L2 Processing Date : Dec 11 2006

## Contents

<b>1</b>	<b>Front</b>	<b>2</b>
<b>2</b>	<b>OBI</b>	<b>3</b>
2.1	OBI . . . . .	3
2.1.1	Images . . . . .	3
2.1.2	Bias . . . . .	3
2.1.3	Parameters . . . . .	4
2.1.4	Events . . . . .	4
2.2	Compared Parameters . . . . .	5
2.3	Aspect . . . . .	6
2.4	Star Slots . . . . .	8
2.5	FID Slots . . . . .	8
<b>A</b>	<b>Summary</b>	<b>9</b>
A.1	Status . . . . .	9
A.2	Comments . . . . .	9

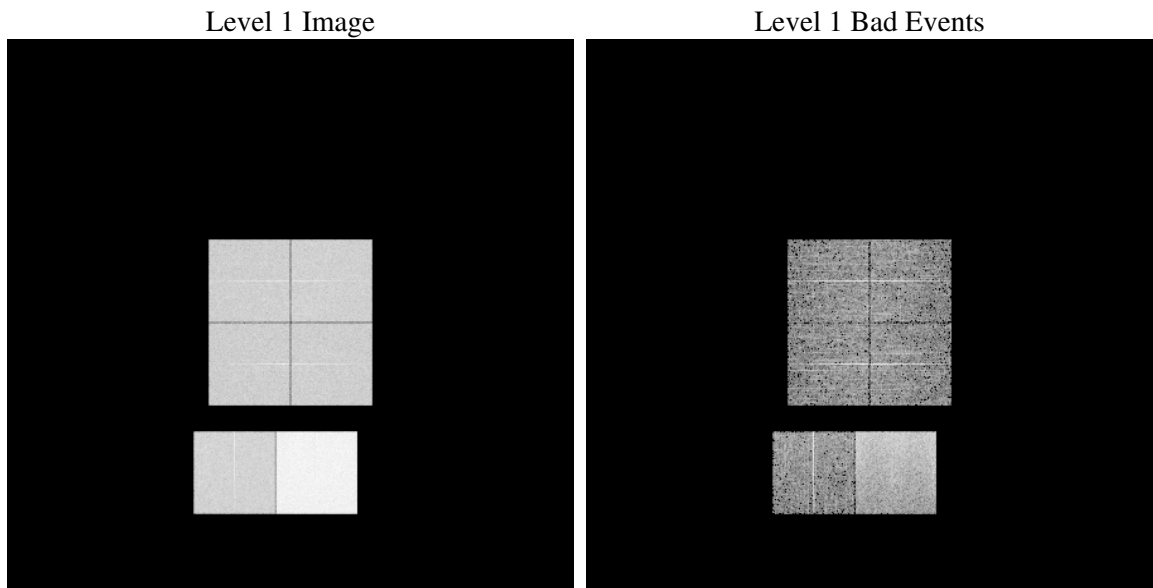
# 1 Front

seq_num	&#160
obs_id	61561
title	ACIS-012367 diagnostics
observer	CHANDRA engineering request/realtime commanding
object	&#160
dtcycle	0
cycle	P
ra_targ	0.0
dec_targ	0.0
ra_nom	323.99159993363
dec_nom	-45.971935645516
roll_nom	68.99885780931
revision	2
ontime	7312.9834479243
livetime	7220.3820481567
ontime0	2892.3223243058
ontime1	3015.0509367585
ontime2	2772.4859444499
ontime3	2820.9375836551
ontime6	3089.5945075154
ontime7	7312.9834479243
l2events	1325431

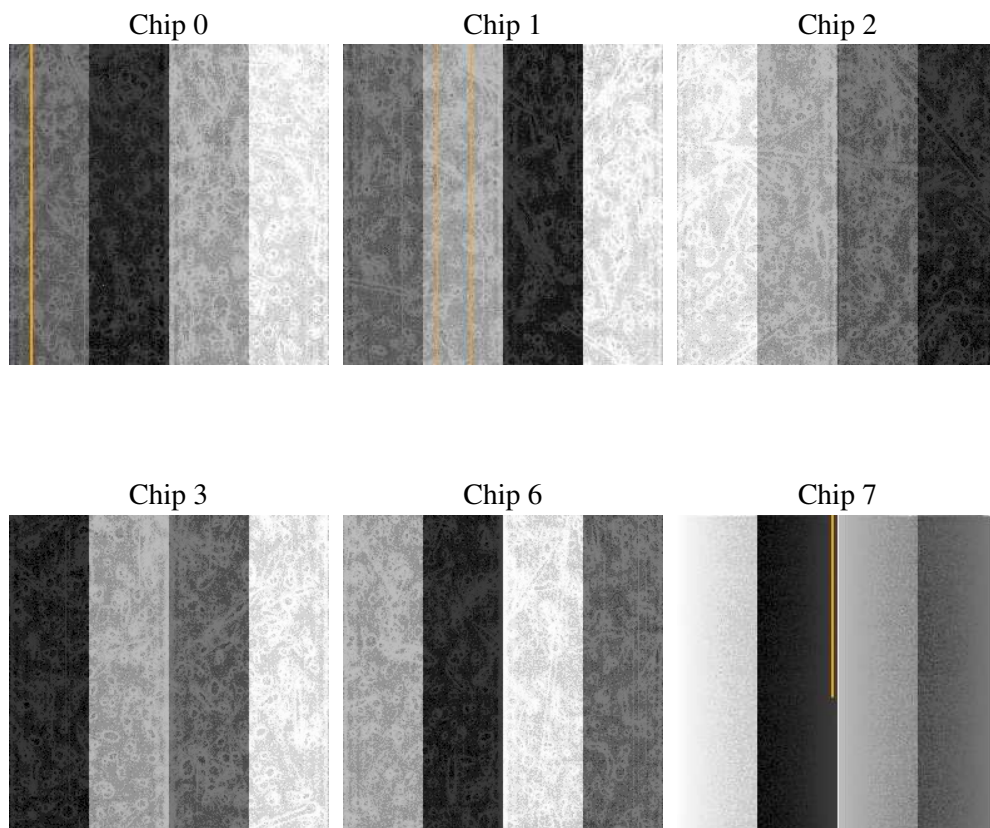
## 2 OBI

### 2.1 OBI

#### 2.1.1 Images



#### 2.1.2 Bias



### 2.1.3 Parameters

obi_num	0
ascdsver	7.6.9
caldsver	3.2.4
date	2006-12-12T02:40:54
revision	2

sched_exp_time	0.0
ontime	7314.9480154663
ontime0	2894.2458518445
ontime1	3017.4050325453
ontime2	2774.327391997
ontime3	2822.9431912005
ontime6	3091.9486033022
ontime7	7314.9480154663
l1events	1548123

### 2.1.4 Events

	ccd 0	ccd 1	ccd 2	ccd 3	ccd 6	ccd 7
level 1 events	202057	210506	197365	200621	226132	511442
rejected events	22264	22132	22483	22292	23825	54120
rejected %	11%	10%	11%	11%	10%	10%

	ccd 0	ccd 1	ccd 2	ccd 3	ccd 6	ccd 7
grade 0 events	99194	104153	97260	99646	110404	86315
	49%	49%	49%	49%	48%	16%
grade 1 events	544	534	490	517	543	214
	0%	0%	0%	0%	0%	0%
grade 2 events	31750	33084	30629	31488	34820	136245
	15%	15%	15%	15%	15%	26%
grade 3 events	11481	12135	11022	11187	12555	34907
	5%	5%	5%	5%	5%	6%
grade 4 events	11415	11779	11107	11373	12716	34559
	5%	5%	5%	5%	5%	6%
grade 5 events	1572	1645	1474	1635	1798	7612
	0%	0%	0%	0%	0%	1%
grade 6 events	26131	27412	25063	24851	32009	165489
	12%	13%	12%	12%	14%	32%
grade 7 events	19970	19764	20320	19924	21287	46101
	9%	9%	10%	9%	9%	9%

## 2.2 Compared Parameters

Parameter	Planned	Actual	Parameter	Planned	Actual
Instrument	ACIS	ACIS	Obspar format version number	6	6
Detector	ACIS-012367	ACIS-012367	Obspar file type	PREDICTED	ACTUAL
Grating	NONE	NONE	Obspar update status	NONE	UPDATED
Data mode	FAINT	FAINT	On-chip summing requested	N	N
Observation mode	SECONDARY	SECONDARY	Subarray requested	NONE	NONE
Pointing RA	0	323.9915999336255	Alternating exposures requested	N	N
Pointing Dec	0	-45.97193564551596	Primary exposure time	3.2	3.2
Pointing Roll	0.0	68.99885780930981			
SIM focus pos (mm)	-0.782348	-0.6828225247311905			
SIM defocus (mm)	0	0.8505141146731063			
SIM translation stage pos (mm)	-233.592463	250.466033080201			
SIM translation stage offset (mm)	0	-0.01005468664627074			
Observation start time	110598726.973011	110598726.20456			
Observation start date	2001-07-04T01:52:07	2001-07-04T01:52:06			
Observation end time	110620938.723878	110620937.95543			
Observation end date	2001-07-04T08:02:19	2001-07-04T08:02:17			
Read mode	TIMED	TIMED			

## 2.3 Aspect



## **2.4 Star Slots**

## **2.5 FID Slots**

# A Summary

## A.1 Status

V&V Scientist	Jen Lauer
V&V Date (YYYY-MM-DD)	2006.12.12
V&V Edition	1
V&V Disposition and Status	OK
V&V Charge Time	7.31298344

## A.2 Comments

The ACIS focal plane temperature is above calibration limits for the first 0.5 ksec of the observation.