

V&V Reference Report

L2 ASCDS Version : 7.6.9

Observation 61551 - L2 Version 001
Chandra X-Ray Center

L2 Processing Date : Dec 14 2006

Contents

1	Front	2
2	OBI	3
2.1	OBI	3
2.1.1	Images	3
2.1.2	Bias	3
2.1.3	Parameters	4
2.1.4	Events	4
2.2	Compared Parameters	5
2.3	Aspect	6
2.4	Star Slots	8
2.5	FID Slots	8
A	Summary	9
A.1	Status	9
A.2	Comments	9

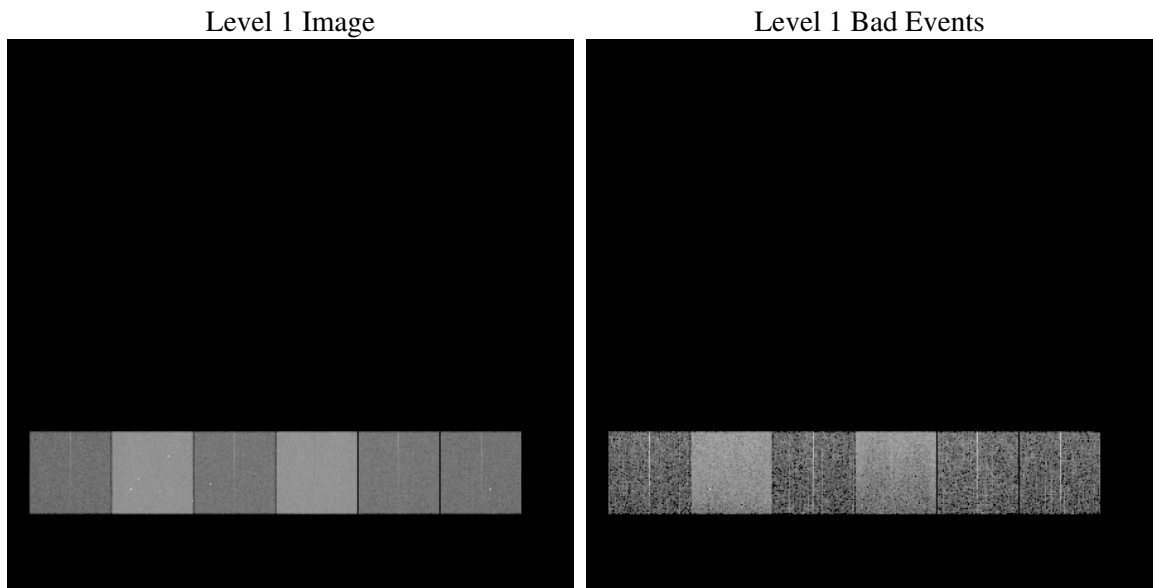
1 Front

seq_num	
obs_id	61551
title	ACIS-456789 diagnostics
observer	CHANDRA engineering request/realtime commanding
object	
dtcycle	0
cycle	P
ra_targ	0.0
dec_targ	0.0
ra_nom	328.4742749105
dec_nom	-2.9872138565167
roll_nom	120.82715522203
revision	2
ontime	5576.31675376
livetime	5505.706073369
ontime4	2095.6058804244
ontime5	5987.9599959701
ontime6	2358.0889202207
ontime7	5576.31675376
ontime8	2354.9299203455
ontime9	2270.4578898698
l2events	1202696

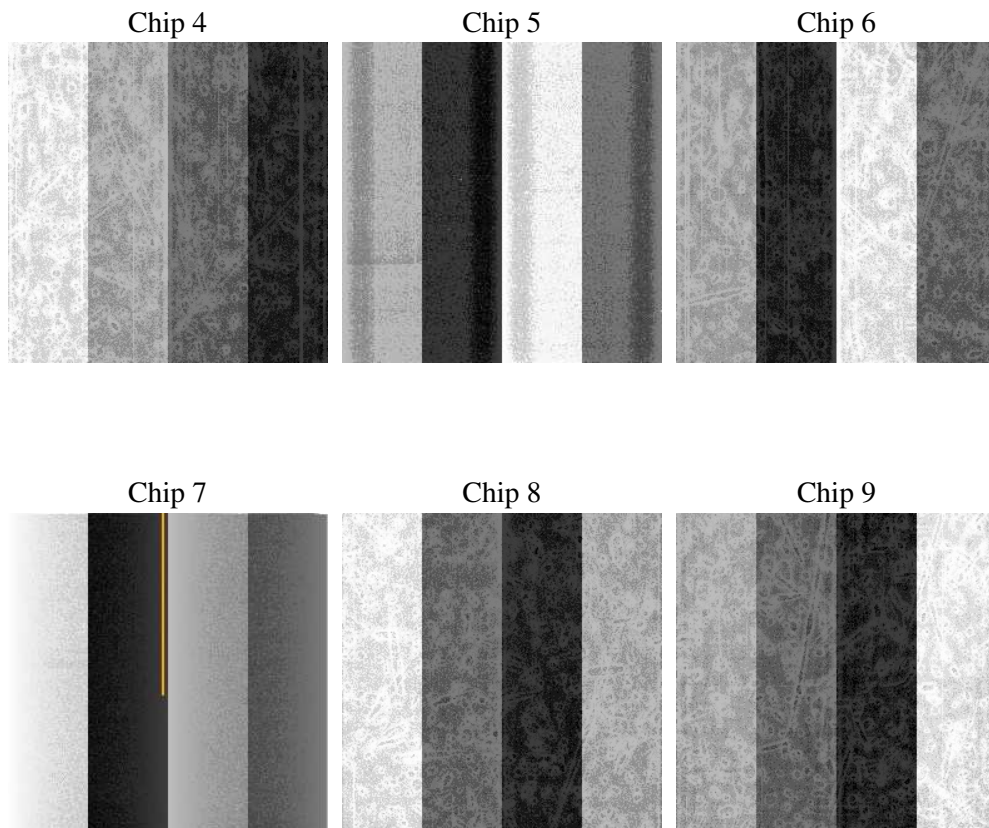
2 OBI

2.1 OBI

2.1.1 Images



2.1.2 Bias



2.1.3 Parameters

obi_num	0
ascdsver	7.6.9
caldbver	3.2.4
date	2006-12-14T16:45:35
revision	2

sched_exp_time	0.0
ontime	5577.7846350372
ontime4	2096.9506417066
ontime5	5989.386837244
ontime6	2359.4747215062
ontime7	5577.7846350372
ontime8	2356.2336416245
ontime9	2271.9668111503
l1events	1426904

2.1.4 Events

	ccd 4	ccd 5	ccd 6	ccd 7	ccd 8	ccd 9
level 1 events	144629	382404	173372	389620	175568	161311
rejected events	18284	51817	18577	41108	21221	18270
rejected %	12%	13%	10%	10%	12%	11%

	ccd 4	ccd 5	ccd 6	ccd 7	ccd 8	ccd 9
grade 0 events	71461	46234	84697	65814	85004	78643
	49%	12%	48%	16%	48%	48%
grade 1 events	386	346	437	127	418	447
	0%	0%	0%	0%	0%	0%
grade 2 events	22239	155207	26886	103714	27297	25185
	15%	40%	15%	26%	15%	15%
grade 3 events	7822	12256	9447	26891	9733	8820
	5%	3%	5%	6%	5%	5%
grade 4 events	7675	12123	9623	26231	9674	8742
	5%	3%	5%	6%	5%	5%
grade 5 events	1133	6217	1461	5892	1521	1441
	0%	1%	0%	1%	0%	0%
grade 6 events	17148	104767	24142	125862	22639	21651
	11%	27%	13%	32%	12%	13%
grade 7 events	16765	45254	16679	35089	19282	16382
	11%	11%	9%	9%	10%	10%

2.2 Compared Parameters

Parameter	Planned	Actual	Parameter	Planned	Actual
Instrument	ACIS	ACIS	Obspar format version number	6	6
Detector	ACIS-456789	ACIS-456789	Obspar file type	PREDICTED	ACTUAL
Grating	NONE	NONE	Obspar update status	NONE	UPDATED
Data mode	FAINT	FAINT	On-chip summing requested	N	N
Observation mode	SECONDARY	SECONDARY	Subarray requested	NONE	NONE
Pointing RA	0	328.474274910504	Alternating exposures requested	N	N
Pointing Dec	0	-2.987213856516667	Primary exposure time	3.2	3.2
Pointing Roll	0.0	120.8271552220307			
SIM focus pos (mm)	-0.684267	-0.6828225247311905			
SIM defocus (mm)	0	0.8505141146731063			
SIM translation stage pos (mm)	-190.132523	250.466033080201			
SIM translation stage offset (mm)	0	-0.01005468664627074			
Observation start time	111252160.398584	111252159.63011			
Observation start date	2001-07-11T15:22:40	2001-07-11T15:22:39			
Observation end time	111283535.649813	111283534.88134			
Observation end date	2001-07-12T00:05:36	2001-07-12T00:05:34			
Read mode	TIMED	TIMED			

2.3 Aspect

2.4 Star Slots

2.5 FID Slots

A Summary

A.1 Status

V&V Scientist	Jen Lauer
V&V Date (YYYY-MM-DD)	2006.12.14
V&V Edition	1
V&V Disposition and Status	OK
V&V Charge Time	5.57631675

A.2 Comments