

V&V Reference Report

L2 ASCDS Version : 8.4.5

Observation 61517 - L2 Version 3
Chandra X-Ray Center

L2 Processing Date : Sep 21 2012

Contents

1	Front	2
2	OBI	3
2.1	OBI	3
2.1.1	Images	3
2.1.2	Bias	3
2.1.3	Parameters	4
2.1.4	Events	4
2.2	Compared Parameters	5
2.3	Star Slots	6
2.4	FID Slots	6
A	Summary	7
A.1	Status	7
A.2	Comments	7

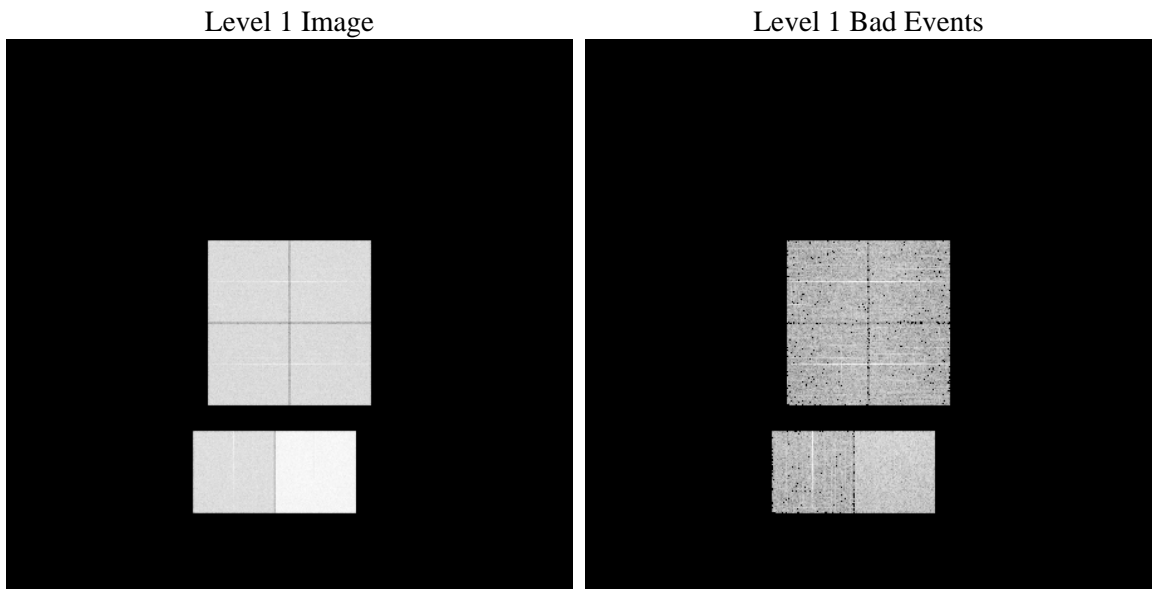
1 Front

seq_num	 	Sequence number
obs_id	61517	Observation id
title	ACIS-012367 diagnostics	Proposal title
observer	CHANDRA engineering request/realtime commanding	Principal investig
object	 	Source name
dtcycle	0	
cycle	P	events from which exps? Prim/Second/Both
ra_targ	0.0	Observer's specified target RA [deg]
dec_targ	0.0	Observer's specified target Dec [deg]
ra_nom	333.02094653107	Nominal RA [deg]
dec_nom	-53.974121175493	Nominal Dec [deg]
roll_nom	31.794740164857	Nominal Roll [deg]
revision	3	Processing version of data
ontime	7465.291948095	Sum of GTIs [s]
livetime	7370.761926389	Livetime [s]
ontime0	2903.9689519852	Sum of GTIs [s]
ontime1	2962.3074625582	Sum of GTIs [s]
ontime2	2754.8814710826	Sum of GTIs [s]
ontime3	2790.5327317119	Sum of GTIs [s]
ontime6	3040.0920736045	Sum of GTIs [s]
ontime7	7465.291948095	Sum of GTIs [s]
l2events	1317798	Number of level 2 events

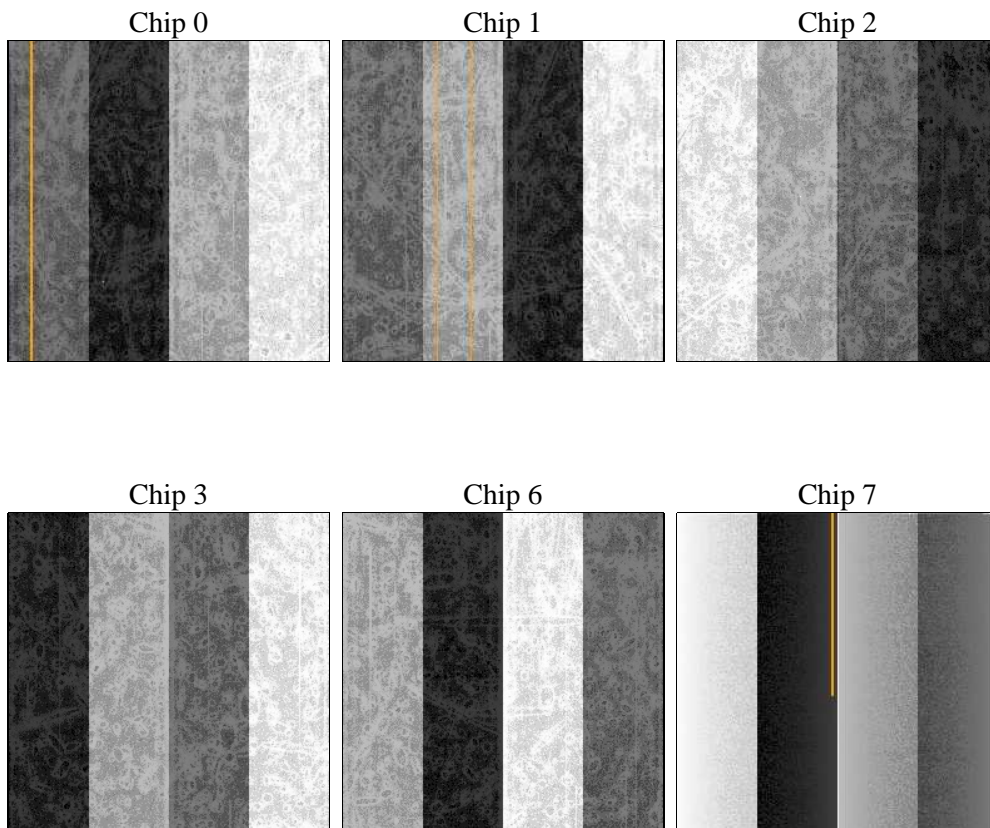
2 OBI

2.1 OBI

2.1.1 Images



2.1.2 Bias



2.1.3 Parameters

obi_num	0	Obi number	sched_exp_time	0.0	[s] Scheduled observation exposure time
ascdsver	8.4.5	Processing system revision	ontime	7465.291948095	Sum of GTIs [s]
caldsver	4.5.1.1	 	ontime0	2903.9689519852	Sum of GTIs [s]
date	2012-09-21T15:47:15	Date and time of file creation	ontime1	2962.3074625582	Sum of GTIs [s]
revision	3	Processing version of data	ontime2	2754.8814710826	Sum of GTIs [s]
			ontime3	2790.5327317119	Sum of GTIs [s]
			ontime6	3040.0920736045	Sum of GTIs [s]
			ontime7	7465.291948095	Sum of GTIs [s]
			l1events	1546502	Number of level 1 events

2.1.4 Events

	ccd 0	ccd 1	ccd 2	ccd 3	ccd 6	ccd 7		ccd 0	ccd 1	ccd 2	ccd 3	ccd 6	ccd 7
level 1 events	202430	206783	196170	198442	222722	519955	grade 0 events	98984	101189	96771	97615	108064	121651
rejected events	25035	25592	24842	25440	26710	46432		48%	48%	49%	49%	48%	23%
rejected %	12%	12%	12%	12%	11%	8%	grade 1 events	524	532	498	528	563	329
								0%	0%	0%	0%	0%	0%
							grade 2 events	31673	32099	30162	30814	34367	104983
								15%	15%	15%	15%	15%	20%
							grade 3 events	11343	11766	11002	11045	12134	48645
								5%	5%	5%	5%	5%	9%
							grade 4 events	11388	11732	10674	11052	12154	48477
								5%	5%	5%	5%	5%	9%
							grade 5 events	1604	1692	1596	1665	1885	8822
								0%	0%	0%	0%	0%	1%
							grade 6 events	26210	26674	24788	24282	31299	155231
								12%	12%	12%	12%	14%	29%
							grade 7 events	20704	21099	20679	21441	22256	31817
								10%	10%	10%	10%	9%	6%

2.2 Compared Parameters

Parameter	Planned	Actual	Parameter	Planned	Actual
Instrument	ACIS	ACIS	Obspar format version number	7	7
Detector	ACIS-012367	ACIS-012367	Obspar file type	PREDICTED	ACTUAL
Grating	NONE	NONE	Obspar update status	NONE	UPDATED
Data mode	FAINT	FAINT	On-chip summing requested	N	N
Observation mode	SECONDARY	SECONDARY	Subarray requested	NONE	NONE
[deg] Pointing RA	0	333.0209465310689	Alternating exposures requested	N	N
[deg] Pointing Dec	0	-53.97412117549268	[s] Primary exposure time	3.2	3.2
[deg] Pointing Roll	0.0	31.79474016485744			
[mm] SIM focus pos	-0.782348	-0.6828225247311905			
[mm] SIM defocus	0	0.8505141146731063			
[mm] SIM translation stage pos	-233.592463	250.466033080201			
[mm] SIM translation stage offset	0	-0.01005468664627074			
[s] Observation start time (MET)	113112535.471551	113112534.70305			
Observation start date	2001-08-02T04:08:55	2001-08-02T04:08:54			
[s] Observation end time (MET)	113136873.072484	113136872.30401			
Observation end date	2001-08-02T10:54:33	2001-08-02T10:54:32			
Read mode	TIMED	TIMED			

2.3 Star Slots

2.4 FID Slots

A Summary

A.1 Status

V&V Scientist	Jen Lauer
V&V Date (YYYY-MM-DD)	2012.09.25
V&V Edition	1
V&V Disposition and Status	OK
V&V Charge Time	7.465291948095

A.2 Comments