

V&V Reference Report

L2 ASCDS Version : 7.6.9

Observation 61512 - L2 Version 001
Chandra X-Ray Center

L2 Processing Date : Dec 19 2006

Contents

1	Front	2
2	OBI	3
2.1	OBI	3
2.1.1	Images	3
2.1.2	Bias	3
2.1.3	Parameters	4
2.1.4	Events	4
2.2	Compared Parameters	5
2.3	Aspect	6
2.4	Star Slots	8
2.5	FID Slots	8
A	Summary	9
A.1	Status	9
A.2	Comments	9

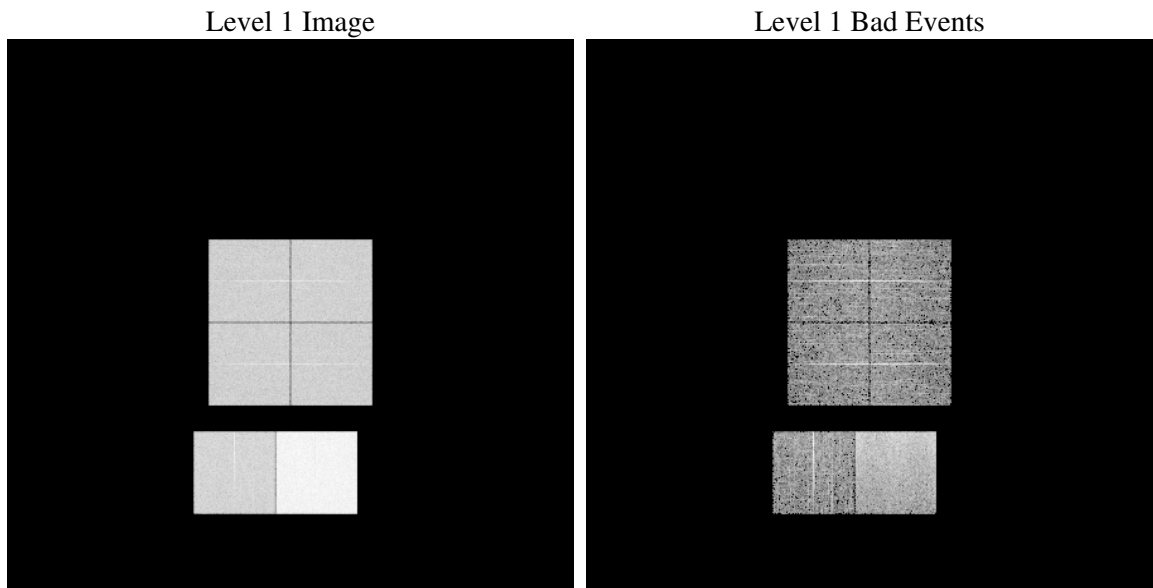
1 Front

seq_num	
obs_id	61512
title	ACIS-012367 diagnostics
observer	CHANDRA engineering request/realtime commanding
object	
dtcycle	0
cycle	P
ra_targ	0.0
dec_targ	0.0
ra_nom	354.97061397119
dec_nom	20.007673571612
roll_nom	131.74039145877
revision	2
ontime	6792.6761246324
livetime	6706.6631694837
ontime0	2653.9781048447
ontime1	2696.1526646167
ontime2	2615.1673560441
ontime3	2595.5574541539
ontime6	2851.8004314899
ontime7	6792.6761246324
l2events	1217620

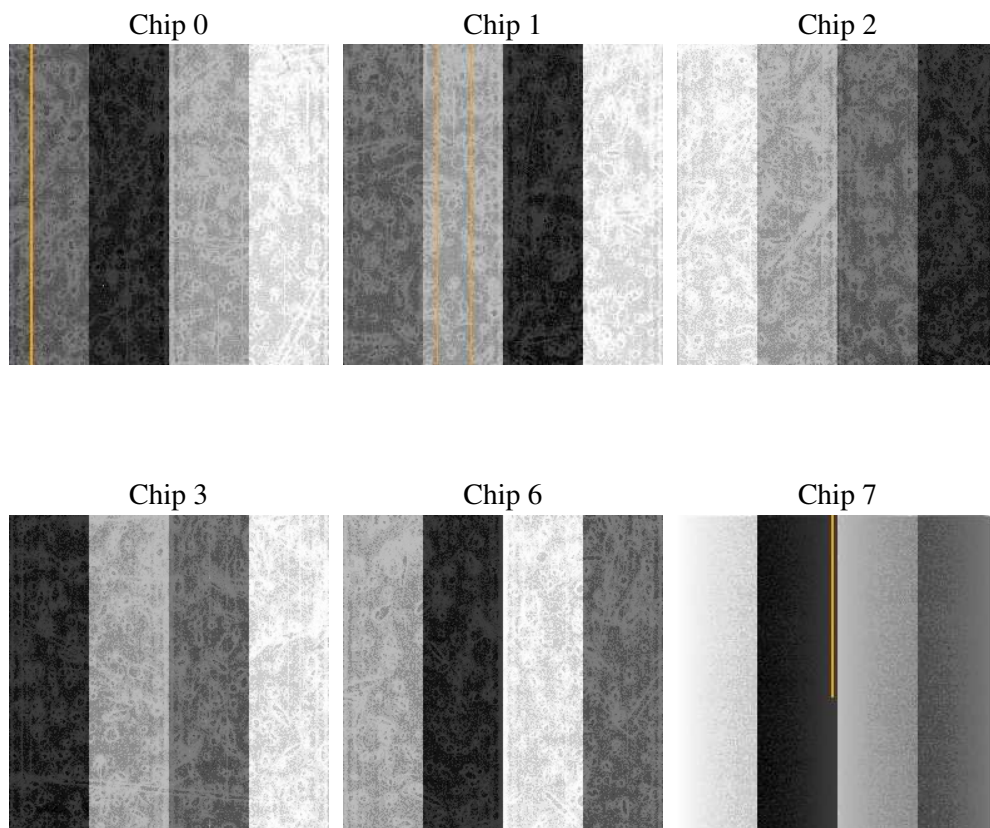
2 OBI

2.1 OBI

2.1.1 Images



2.1.2 Bias



2.1.3 Parameters

obi_num	0
ascdsver	7.6.9
caldbver	3.2.4
date	2006-12-19T17:58:39
revision	2

sched_exp_time	0.0
ontime	6793.1481522173
ontime0	2654.4090924263
ontime1	2696.5426122099
ontime2	2615.516263634
ontime3	2596.0705217421
ontime6	2852.1118940115
ontime7	6793.1481522173
l1events	1426036

2.1.4 Events

	ccd 0	ccd 1	ccd 2	ccd 3	ccd 6	ccd 7
level 1 events	184352	188224	184595	183996	209678	475191
rejected events	20726	21112	20803	21074	23822	49580
rejected %	11%	11%	11%	11%	11%	10%

	ccd 0	ccd 1	ccd 2	ccd 3	ccd 6	ccd 7
grade 0 events	89578	92000	90944	91046	100659	82465
	48%	48%	49%	49%	48%	17%
grade 1 events	528	509	472	485	506	189
	0%	0%	0%	0%	0%	0%
grade 2 events	29054	29603	28749	28587	32505	125190
	15%	15%	15%	15%	15%	26%
grade 3 events	10384	10423	10374	10182	11452	33026
	5%	5%	5%	5%	5%	6%
grade 4 events	10283	10535	10388	10385	11449	32669
	5%	5%	5%	5%	5%	6%
grade 5 events	1479	1541	1424	1462	1665	7152
	0%	0%	0%	0%	0%	1%
grade 6 events	24327	24636	23337	22722	29791	152461
	13%	13%	12%	12%	14%	32%
grade 7 events	18719	18977	18907	19127	21651	42039
	10%	10%	10%	10%	10%	8%

2.2 Compared Parameters

Parameter	Planned	Actual	Parameter	Planned	Actual
Instrument	ACIS	ACIS	Obspar format version number	6	6
Detector	ACIS-012367	ACIS-012367	Obspar file type	PREDICTED	ACTUAL
Grating	NONE	NONE	Obspar update status	NONE	UPDATED
Data mode	FAINT	FAINT	On-chip summing requested	N	N
Observation mode	SECONDARY	SECONDARY	Subarray requested	NONE	NONE
Pointing RA	0	354.9706139711898	Alternating exposures requested	N	N
Pointing Dec	0	20.00767357161161	Primary exposure time	0.000000	3.2
Pointing Roll	0.0	131.7403914587742			
SIM focus pos (mm)	-0.782348	-1.428180813131781			
SIM defocus (mm)	0	0.1051558262725154			
SIM translation stage pos (mm)	-233.592463	251.4516446784125			
SIM translation stage offset (mm)	0	-0.9956662848578048			
Observation start time	113534124.138	113534123.36964			
Observation start date	2001-08-07T01:15:24	2001-08-07T01:15:23			
Observation end time	113570696.14	113570695.37109			
Observation end date	2001-08-07T11:24:56	2001-08-07T11:24:55			
Read mode	TIMED	TIMED			

2.3 Aspect

2.4 Star Slots

2.5 FID Slots

A Summary

A.1 Status

V&V Scientist	Jen Lauer
V&V Date (YYYY-MM-DD)	2006.12.19
V&V Edition	1
V&V Disposition and Status	OK
V&V Charge Time	6.79267612

A.2 Comments