

# V&V Reference Report

## L2 ASCDS Version : 7.6.9

Observation 61505 - L2 Version 001  
Chandra X-Ray Center

L2 Processing Date : Dec 19 2006

## Contents

<b>1</b>	<b>Front</b>	<b>2</b>
<b>2</b>	<b>OBI</b>	<b>3</b>
2.1	OBI . . . . .	3
2.1.1	Images . . . . .	3
2.1.2	Bias . . . . .	3
2.1.3	Parameters . . . . .	4
2.1.4	Events . . . . .	4
2.2	Compared Parameters . . . . .	5
2.3	Aspect . . . . .	6
2.4	Star Slots . . . . .	8
2.5	FID Slots . . . . .	8
<b>A</b>	<b>Summary</b>	<b>9</b>
A.1	Status . . . . .	9
A.2	Comments . . . . .	9

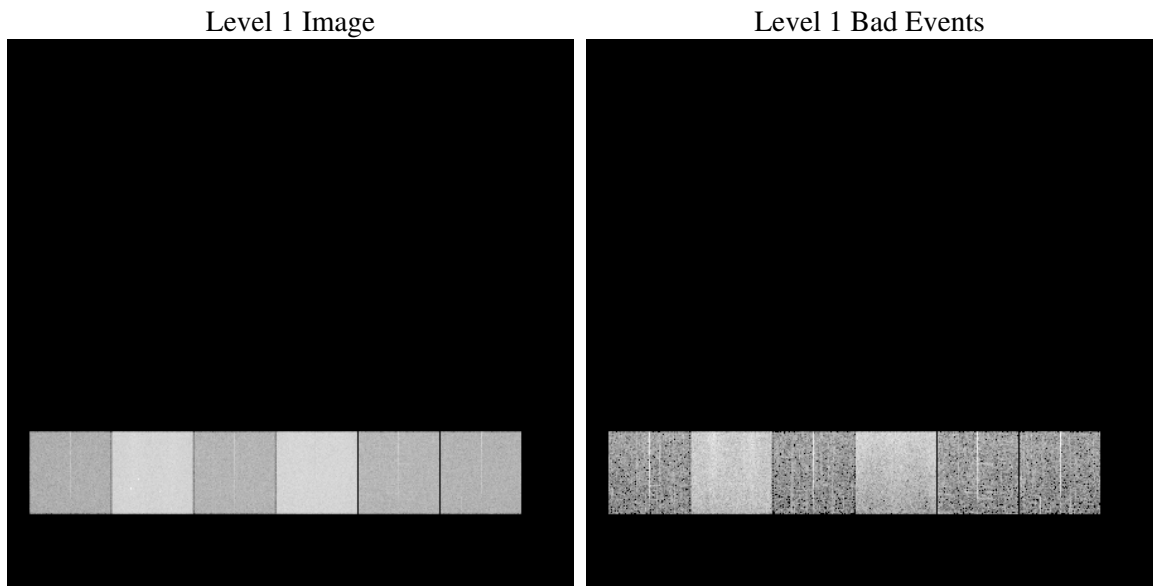
# 1 Front

seq_num	&#160
obs_id	61505
title	ACIS-456789 diagnostics
observer	CHANDRA engineering request/realtime commanding
object	&#160
dtcycle	0
cycle	P
ra_targ	0.0
dec_targ	0.0
ra_nom	302.03190948608
dec_nom	-32.009440794628
roll_nom	308.00636470356
revision	2
ontime	6306.8666646332
livetime	6227.0053213864
ontime4	2307.5985798985
ontime5	6818.9793256819
ontime6	2550.6356389225
ontime7	6306.8666646332
ontime8	2628.4810807556
ontime9	2505.1379391551
l2events	1288009

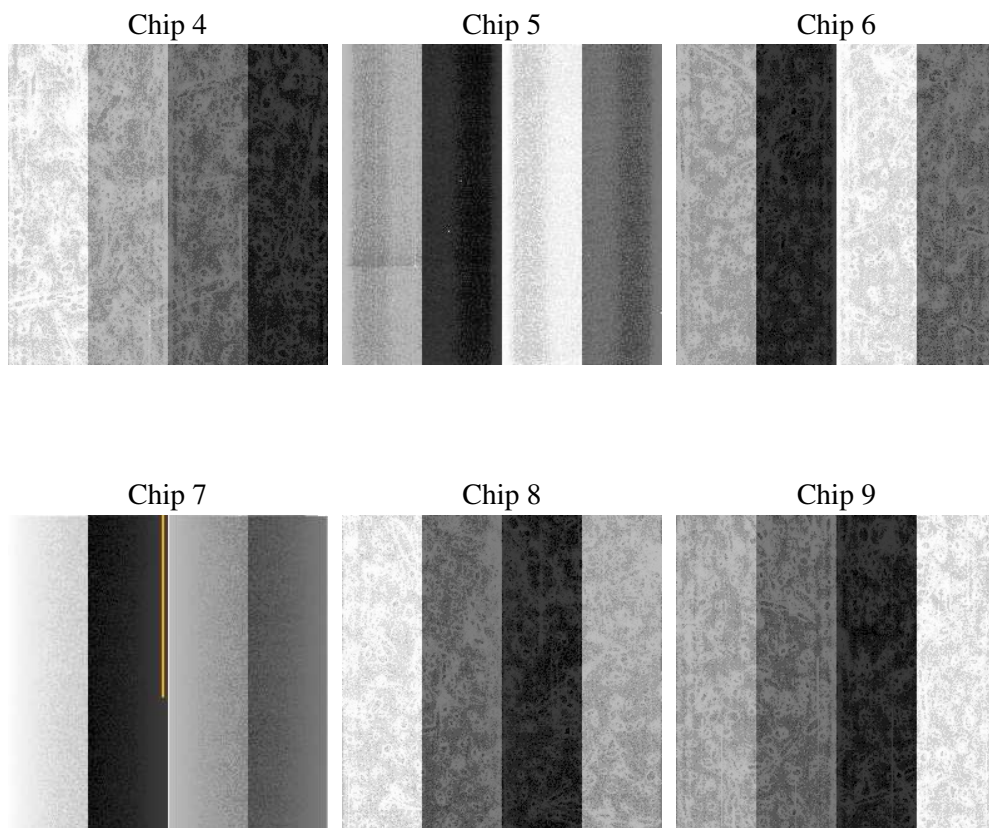
## 2 OBI

### 2.1 OBI

#### 2.1.1 Images



#### 2.1.2 Bias



### 2.1.3 Parameters

obi_num	0
ascdsver	7.6.9
caldbver	3.2.4
date	2006-12-19T18:26:21
revision	2

sched_exp_time	0.0
ontime	6307.0093861669
ontime4	2307.6181814373
ontime5	6819.0810072124
ontime6	2550.6962804645
ontime7	6307.0093861669
ontime8	2628.4810807556
ontime9	2505.3217006922
l1events	1546478

### 2.1.4 Events

	ccd 4	ccd 5	ccd 6	ccd 7	ccd 8	ccd 9
level 1 events	154583	420733	180463	430473	188668	171558
rejected events	21883	65036	21140	52112	22647	20892
rejected %	14%	15%	11%	12%	12%	12%

	ccd 4	ccd 5	ccd 6	ccd 7	ccd 8	ccd 9
grade 0 events	70769	35943	85075	65528	90714	81537
	45%	8%	47%	15%	48%	47%
grade 1 events	326	120	359	133	427	368
	0%	0%	0%	0%	0%	0%
grade 2 events	28399	170636	29779	117733	30076	28096
	18%	40%	16%	27%	15%	16%
grade 3 events	7538	11403	9366	27151	10277	8912
	4%	2%	5%	6%	5%	5%
grade 4 events	7337	10516	9425	25739	10158	8935
	4%	2%	5%	5%	5%	5%
grade 5 events	1345	6945	1559	6928	1697	1581
	0%	1%	0%	1%	0%	0%
grade 6 events	18657	127199	25678	142210	24796	23186
	12%	30%	14%	33%	13%	13%
grade 7 events	20212	57971	19222	45051	20523	18943
	13%	13%	10%	10%	10%	11%

## 2.2 Compared Parameters

Parameter	Planned	Actual	Parameter	Planned	Actual
Instrument	ACIS	ACIS	Obspar format version number	6	6
Detector	ACIS-456789	ACIS-456789	Obspar file type	PREDICTED	ACTUAL
Grating	NONE	NONE	Obspar update status	NONE	UPDATED
Data mode	FAINT	FAINT	On-chip summing requested	N	N
Observation mode	SECONDARY	SECONDARY	Subarray requested	NONE	NONE
Pointing RA	0	302.0319094860828	Alternating exposures requested	N	N
Pointing Dec	0	-32.00944079462834	Primary exposure time	0.000000	3.2
Pointing Roll	0.0	308.006364703562			
SIM focus pos (mm)	-0.684267	-0.6828225247311905			
SIM defocus (mm)	0	0.8505141146731063			
SIM translation stage pos (mm)	-190.132523	250.466033080201			
SIM translation stage offset (mm)	0	-0.01005468664627074			
Observation start time	114024625.607	114024624.83896			
Observation start date	2001-08-12T17:30:26	2001-08-12T17:30:24			
Observation end time	114045935.358	114045934.5898			
Observation end date	2001-08-12T23:25:35	2001-08-12T23:25:34			
Read mode	TIMED	TIMED			

## 2.3 Aspect



## **2.4 Star Slots**

## **2.5 FID Slots**



# A Summary

## A.1 Status

V&V Scientist	Beth Sundheim
V&V Date (YYYY-MM-DD)	2006.12.19
V&V Edition	1
V&V Disposition and Status	OK
V&V Charge Time	6.30686666

## A.2 Comments

Focal plane temperature is warmer than -118.7 C degrees during the entire observation. This temperature is the upper limit of the verified ACIS calibration for the front-illuminated chips.