

V&V Reference Report

L2 ASCDS Version : 7.6.9

Observation 61499 - L2 Version 001
Chandra X-Ray Center

L2 Processing Date : Dec 19 2006

Contents

1	Front	2
2	OBI	3
2.1	OBI	3
2.1.1	Images	3
2.1.2	Bias	3
2.1.3	Parameters	4
2.1.4	Events	4
2.2	Compared Parameters	5
2.3	Aspect	6
2.4	Star Slots	8
2.5	FID Slots	8
A	Summary	9
A.1	Status	9
A.2	Comments	9

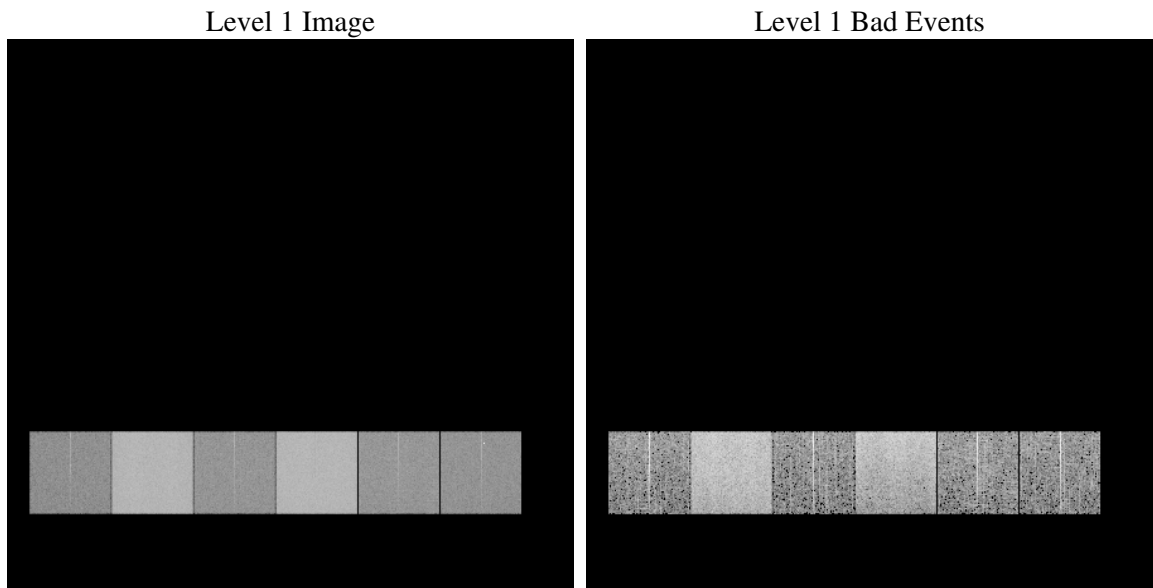
1 Front

seq_num	
obs_id	61499
title	ACIS-456789 diagnostics
observer	CHANDRA engineering request/realtime commanding
object	
dtcycle	0
cycle	P
ra_targ	0.0
dec_targ	0.0
ra_nom	4.9733315213916
dec_nom	12.01183390196
roll_nom	122.89276500524
revision	2
ontime	6340.3733764589
livetime	6260.0877510517
ontime4	2260.0834167898
ontime5	6862.208727479
ontime6	2496.6382463425
ontime7	6340.3733764589
ontime8	2584.2281569242
ontime9	2460.8636764139
l2events	1289871

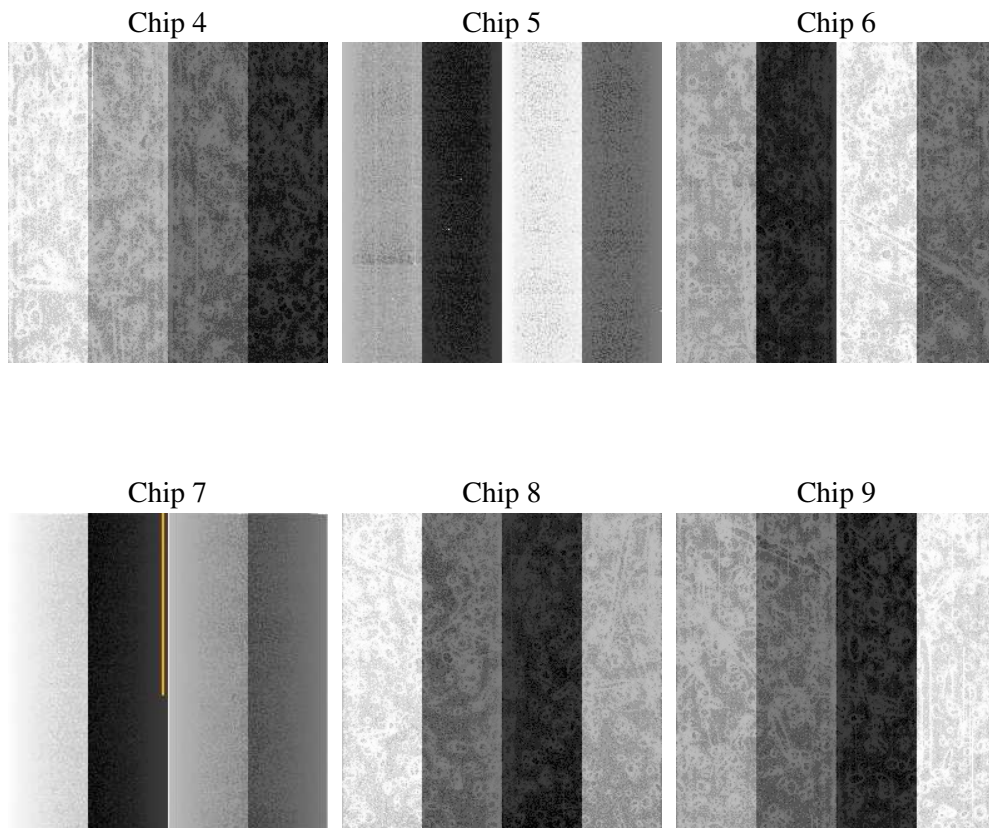
2 OBI

2.1 OBI

2.1.1 Images



2.1.2 Bias



2.1.3 Parameters

obi_num	1
ascdsver	7.6.9
caldsver	3.2.4
date	2006-12-19T19:16:18
revision	2

sched_exp_time	0.0
ontime	6355.6206906587
ontime4	2265.4845906943
ontime5	6880.6559619308
ontime6	2502.0804602504
ontime7	6355.6206906587
ontime8	2589.5882908255
ontime9	2469.6700503081
l1events	1546905

2.1.4 Events

	ccd 4	ccd 5	ccd 6	ccd 7	ccd 8	ccd 9
level 1 events	152911	422849	179125	431994	188038	171988
rejected events	22668	61192	22311	49292	24354	22244
rejected %	14%	14%	12%	11%	12%	12%

	ccd 4	ccd 5	ccd 6	ccd 7	ccd 8	ccd 9
grade 0 events	72786	41813	85448	69149	90454	82587
	47%	9%	47%	16%	48%	48%
grade 1 events	429	128	380	177	497	372
	0%	0%	0%	0%	0%	0%
grade 2 events	24072	174507	27536	116979	28805	26391
	15%	41%	15%	27%	15%	15%
grade 3 events	7787	12379	9655	28659	10355	9171
	5%	2%	5%	6%	5%	5%
grade 4 events	7956	11908	9563	27865	10438	9353
	5%	2%	5%	6%	5%	5%
grade 5 events	1236	6782	1544	6664	1733	1459
	0%	1%	0%	1%	0%	0%
grade 6 events	17992	122064	25021	141039	24065	22876
	11%	28%	13%	32%	12%	13%
grade 7 events	20653	53268	19978	41462	21691	19779
	13%	12%	11%	9%	11%	11%

2.2 Compared Parameters

Parameter	Planned	Actual	Parameter	Planned	Actual
Instrument	ACIS	ACIS	Obspar format version number	6	6
Detector	ACIS-456789	ACIS-456789	Obspar file type	PREDICTED	ACTUAL
Grating	NONE	NONE	Obspar update status	NONE	UPDATED
Data mode	FAINT	FAINT	On-chip summing requested	N	N
Observation mode	SECONDARY	SECONDARY	Subarray requested	NONE	NONE
Pointing RA	0	4.973331521391575	Alternating exposures requested	N	N
Pointing Dec	0	12.01183390195984	Primary exposure time	0.000000	3.2
Pointing Roll	0.0	122.8927650052361			
SIM focus pos (mm)	-0.684267	-1.428180813131781			
SIM defocus (mm)	0	0.1051558262725154			
SIM translation stage pos (mm)	-190.132523	250.466033080201			
SIM translation stage offset (mm)	0	-0.01005468664627074			
Observation start time	114484782.976	114484782.20709			
Observation start date	2001-08-18T01:19:43	2001-08-18T01:19:42			
Observation end time	114507232.526	114507231.75797			
Observation end date	2001-08-18T07:33:53	2001-08-18T07:33:51			
Read mode	TIMED	TIMED			

2.3 Aspect

2.4 Star Slots

2.5 FID Slots

A Summary

A.1 Status

V&V Scientist	Jen Lauer
V&V Date (YYYY-MM-DD)	2006.12.19
V&V Edition	1
V&V Disposition and Status	OK
V&V Charge Time	6.34037337

A.2 Comments

The ACIS focal plane temperature was above calibration limits for the entire observation.