

V&V Reference Report

L2 ASCDS Version : 8.4.5

Observation 61486 - L2 Version 3
Chandra X-Ray Center

L2 Processing Date : Sep 23 2012

Contents

1	Front	2
2	OBI	3
2.1	OBI	3
2.1.1	Images	3
2.1.2	Bias	3
2.1.3	Parameters	4
2.1.4	Events	4
2.2	Compared Parameters	5
2.3	Star Slots	6
2.4	FID Slots	6
A	Summary	7
A.1	Status	7
A.2	Comments	7

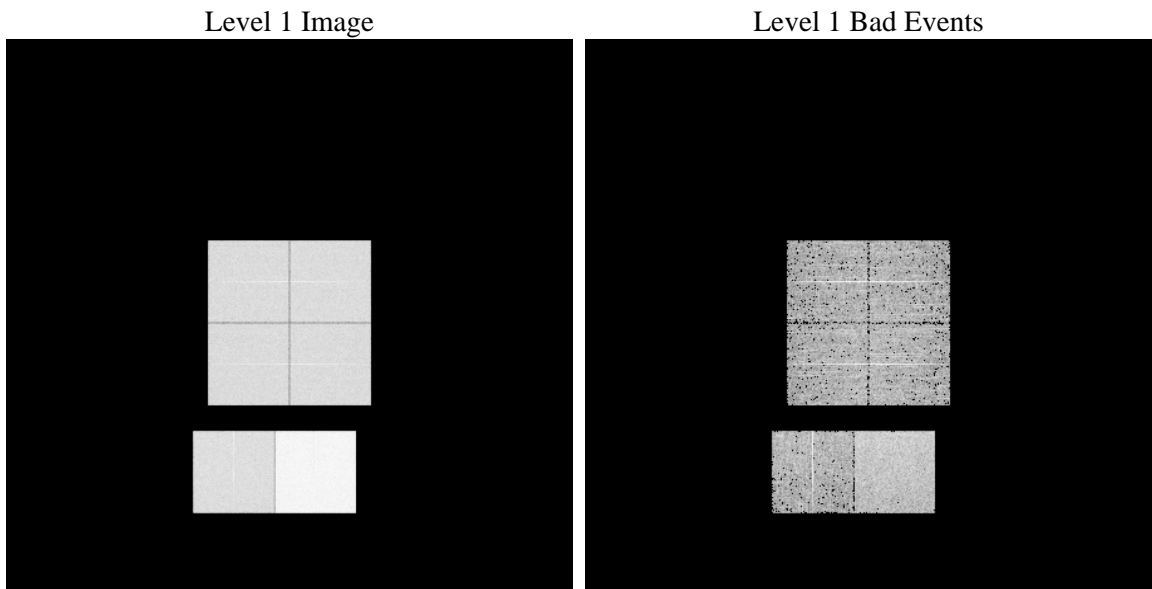
1 Front

seq_num	 	Sequence number
obs_id	61486	Observation id
title	ACIS-012367 diagnostics	Proposal title
observer	CHANDRA engineering request/realtime commanding	Principal investig
object	 	Source name
dtcycle	0	
cycle	P	events from which exps? Prim/Second/Both
ra_targ	0.0	Observer's specified target RA [deg]
dec_targ	0.0	Observer's specified target Dec [deg]
ra_nom	46.984169779688	Nominal RA [deg]
dec_nom	-64.972173173066	Nominal Dec [deg]
roll_nom	70.667426178282	Nominal Roll [deg]
revision	3	Processing version of data
ontime	6913.05992347	Sum of GTIs [s]
livetime	6825.5225961741	Livetime [s]
ontime0	2819.7015234232	Sum of GTIs [s]
ontime1	2857.5683126152	Sum of GTIs [s]
ontime2	2722.4705727696	Sum of GTIs [s]
ontime3	2722.4703136384	Sum of GTIs [s]
ontime6	2910.4499655664	Sum of GTIs [s]
ontime7	6913.05992347	Sum of GTIs [s]
l2events	1234282	Number of level 2 events

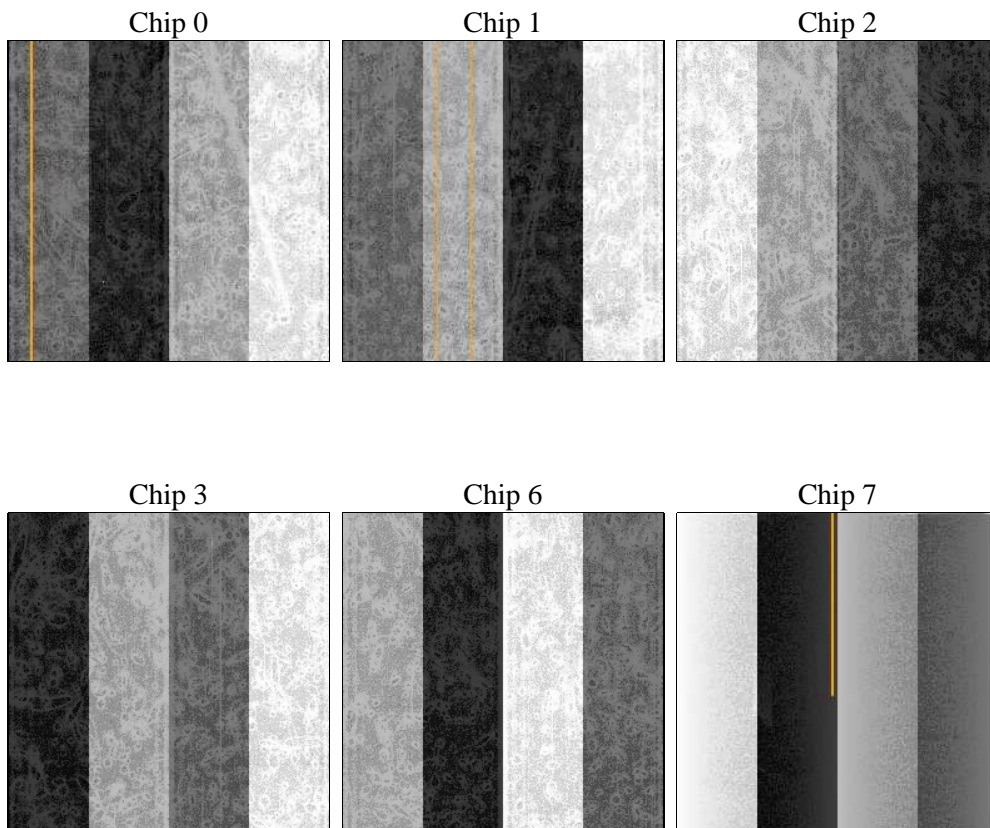
2 OBI

2.1 OBI

2.1.1 Images



2.1.2 Bias



2.1.3 Parameters

obi_num	0	Obi number	sched_exp_time	0.0	[s] Scheduled observation exposure time
ascdsver	8.4.5	Processing system revision	ontime	6913.05992347	Sum of GTIs [s]
caldsver	4.5.1.1	 	ontime0	2819.7015234232	Sum of GTIs [s]
date	2012-09-23T16:52:50	Date and time of file creation	ontime1	2857.5683126152	Sum of GTIs [s]
revision	3	Processing version of data	ontime2	2722.4705727696	Sum of GTIs [s]
			ontime3	2722.4703136384	Sum of GTIs [s]
			ontime6	2910.4499655664	Sum of GTIs [s]
			ontime7	6913.05992347	Sum of GTIs [s]
			l1events	1423692	Number of level 1 events

2.1.4 Events

	ccd 0	ccd 1	ccd 2	ccd 3	ccd 6	ccd 7		ccd 0	ccd 1	ccd 2	ccd 3	ccd 6	ccd 7
level 1 events	188306	191074	185972	187689	204793	465858	grade 0 events	92578	94574	92137	92547	100283	110719
rejected events	19352	19833	20535	21741	21190	34556		49%	49%	49%	49%	48%	23%
rejected %	10%	10%	11%	11%	10%	7%	grade 1 events	441	459	455	466	468	287
								0%	0%	0%	0%	0%	0%
							grade 2 events	29904	30179	29249	29133	31691	95821
								15%	15%	15%	15%	15%	20%
							grade 3 events	10979	10701	10339	10691	11309	44219
								5%	5%	5%	5%	5%	9%
							grade 4 events	10622	10773	10372	10546	11327	43678
								5%	5%	5%	5%	5%	9%
							grade 5 events	1456	1517	1391	1445	1609	7173
								0%	0%	0%	0%	0%	1%
							grade 6 events	24871	25014	23340	23031	28993	136865
								13%	13%	12%	12%	14%	29%
							grade 7 events	17455	17857	18689	19830	19113	27096
								9%	9%	10%	10%	9%	5%

2.2 Compared Parameters

Parameter	Planned	Actual
Instrument	ACIS	ACIS
Detector	ACIS-012367	ACIS-012367
Grating	NONE	NONE
Data mode	FAINT	FAINT
Observation mode	SECONDARY	SECONDARY
[deg] Pointing RA	0	46.98416977968817
[deg] Pointing Dec	0	-64.97217317306585
[deg] Pointing Roll	0.0	70.66742617828233
[mm] SIM focus pos	-0.782348	-0.6828225247311905
[mm] SIM defocus	0	0.8505141146731063
[mm] SIM translation stage pos	-233.592463	250.466033080201
[mm] SIM translation stage offset	0	-0.01005468664627074
[s] Observation start time (MET)	115822774.978404	115822774.20991
Observation start date	2001-09-02T12:59:35	2001-09-02T12:59:34
[s] Observation end time (MET)	115833844.978843	115833844.21035
Observation end date	2001-09-02T16:04:05	2001-09-02T16:04:04
Read mode	TIMED	TIMED

Parameter	Planned	Actual
Obspar format version number	7	7
Obspar file type	PREDICTED	ACTUAL
Obspar update status	NONE	UPDATED
On-chip summing requested	N	N
Subarray requested	NONE	NONE
Alternating exposures requested	N	N
[s] Primary exposure time	3.2	3.2

2.3 Star Slots

2.4 FID Slots

A Summary

A.1 Status

V&V Scientist	Beth Sundheim
V&V Date (YYYY-MM-DD)	2012.09.26
V&V Edition	1
V&V Disposition and Status	OK
V&V Charge Time	6.91305992347

A.2 Comments