

# V&V Reference Report

## L2 ASCDS Version : 8.4.5

Observation 61473 - L2 Version 3  
Chandra X-Ray Center

L2 Processing Date : Sep 24 2012

## Contents

<b>1</b>	<b>Front</b>	<b>2</b>
<b>2</b>	<b>OBI</b>	<b>3</b>
2.1	OBI . . . . .	3
2.1.1	Images . . . . .	3
2.1.2	Bias . . . . .	3
2.1.3	Parameters . . . . .	4
2.1.4	Events . . . . .	4
2.2	Compared Parameters . . . . .	5
2.3	Star Slots . . . . .	6
2.4	FID Slots . . . . .	6
<b>A</b>	<b>Summary</b>	<b>7</b>
A.1	Status . . . . .	7
A.2	Comments . . . . .	7

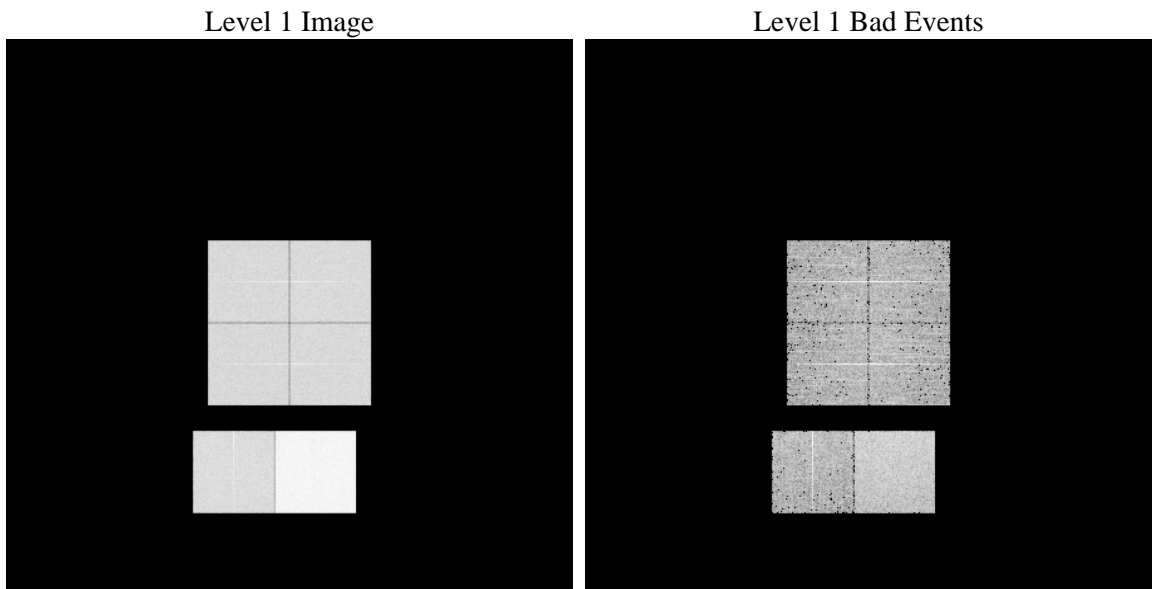
# 1 Front

seq_num	&#160	Sequence number
obs_id	61473	Observation id
title	ACIS-012367 diagnostics	Proposal title
observer	CHANDRA engineering request/realtime commanding	Principal investig
object	&#160	Source name
dtcycle	0	&#160
cycle	P	events from which exps? Prim/Second/Both
ra_targ	0.0	Observer's specified target RA [deg]
dec_targ	0.0	Observer's specified target Dec [deg]
ra_nom	305.02969916783	Nominal RA [deg]
dec_nom	-35.015135599192	Nominal Dec [deg]
roll_nom	295.34804413905	Nominal Roll [deg]
revision	3	Processing version of data
ontime	7783.4750531614	Sum of GTIs [s]
livetime	7684.9160053922	Livetime [s]
ontime0	2990.7408346087	Sum of GTIs [s]
ontime1	3058.8432062417	Sum of GTIs [s]
ontime2	2841.7353739291	Sum of GTIs [s]
ontime3	2886.9457240999	Sum of GTIs [s]
ontime6	3126.1870176047	Sum of GTIs [s]
ontime7	7783.4750531614	Sum of GTIs [s]
l2events	1311542	Number of level 2 events

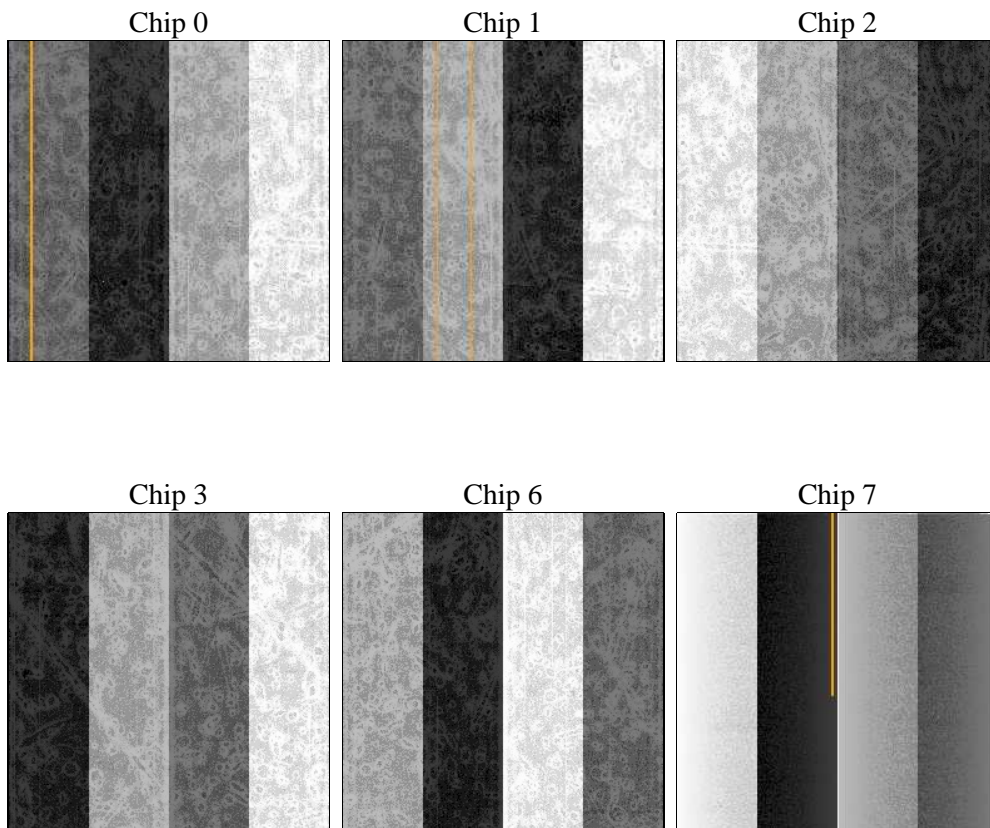
## 2 OBI

### 2.1 OBI

#### 2.1.1 Images



#### 2.1.2 Bias



### 2.1.3 Parameters

obi_num	0	Obi number	sched_exp_time	0.0	[s] Scheduled observation exposure time
ascdsver	8.4.5	Processing system revision	ontime	7783.4750531614	Sum of GTIs [s]
caldsver	4.5.1.1	&#160	ontime0	2990.7408346087	Sum of GTIs [s]
date	2012-09-24T07:13:16	Date and time of file creation	ontime1	3058.8432062417	Sum of GTIs [s]
revision	3	Processing version of data	ontime2	2841.7353739291	Sum of GTIs [s]
			ontime3	2886.9457240999	Sum of GTIs [s]
			ontime6	3126.1870176047	Sum of GTIs [s]
			ontime7	7783.4750531614	Sum of GTIs [s]
			l1events	1542351	Number of level 1 events

### 2.1.4 Events

	ccd 0	ccd 1	ccd 2	ccd 3	ccd 6	ccd 7		ccd 0	ccd 1	ccd 2	ccd 3	ccd 6	ccd 7
level 1 events	200572	206093	193319	198276	219080	525011	grade 0 events	97447	100126	93349	97031	105134	119199
rejected events	24739	25441	25148	26497	27067	48069		48%	48%	48%	48%	47%	22%
rejected %	12%	12%	13%	13%	12%	9%	grade 1 events	491	513	475	468	516	321
								0%	0%	0%	0%	0%	0%
							grade 2 events	31381	32540	30509	30684	34248	105949
								15%	15%	15%	15%	15%	20%
							grade 3 events	11092	11431	10532	10678	11631	48401
								5%	5%	5%	5%	5%	9%
							grade 4 events	10913	11286	10341	10782	11489	47703
								5%	5%	5%	5%	5%	9%
							grade 5 events	1567	1731	1491	1693	1866	8876
								0%	0%	0%	0%	0%	1%
							grade 6 events	26316	26785	24580	24191	30930	159615
								13%	12%	12%	12%	14%	30%
							grade 7 events	21365	21681	22042	22749	23266	34947
								10%	10%	11%	11%	10%	6%

## 2.2 Compared Parameters

Parameter	Planned	Actual	Parameter	Planned	Actual
Instrument	ACIS	ACIS	Obspar format version number	7	7
Detector	ACIS-012367	ACIS-012367	Obspar file type	PREDICTED	ACTUAL
Grating	NONE	NONE	Obspar update status	NONE	UPDATED
Data mode	FAINT	FAINT	On-chip summing requested	N	N
Observation mode	SECONDARY	SECONDARY	Subarray requested	NONE	NONE
[deg] Pointing RA	0	305.0296991678316	Alternating exposures requested	N	N
[deg] Pointing Dec	0	-35.01513559919225	[s] Primary exposure time	0.000000	3.2
[deg] Pointing Roll	0.0	295.348044139055			
[mm] SIM focus pos	-0.782348	-0.6828225247311905			
[mm] SIM defocus	0	0.8505141146731063			
[mm] SIM translation stage pos	-233.592463	250.466033080201			
[mm] SIM translation stage offset	0	-0.01005468664627074			
[s] Observation start time (MET)	116766787.716	116766786.94722			
Observation start date	2001-09-13T11:13:08	2001-09-13T11:13:06			
[s] Observation end time (MET)	116789054.817	116789054.0481			
Observation end date	2001-09-13T17:24:15	2001-09-13T17:24:14			
Read mode	TIMED	TIMED			

## **2.3 Star Slots**

## **2.4 FID Slots**

## A Summary

### A.1 Status

V&V Scientist	Jen Lauer
V&V Date (YYYY-MM-DD)	2012.09.26
V&V Edition	1
V&V Disposition and Status	OK
V&V Charge Time	7.7834750531614

### A.2 Comments