

V&V Reference Report

L2 ASCDS Version : 7.6.9

Observation 61472 - L2 Version 001
Chandra X-Ray Center

L2 Processing Date : Jan 3 2007

Contents

1	Front	2
2	OBI	3
2.1	OBI	3
2.1.1	Images	3
2.1.2	Bias	3
2.1.3	Parameters	4
2.1.4	Events	4
2.2	Compared Parameters	5
2.3	Aspect	6
2.4	Star Slots	8
2.5	FID Slots	8
A	Summary	9
A.1	Status	9
A.2	Comments	9

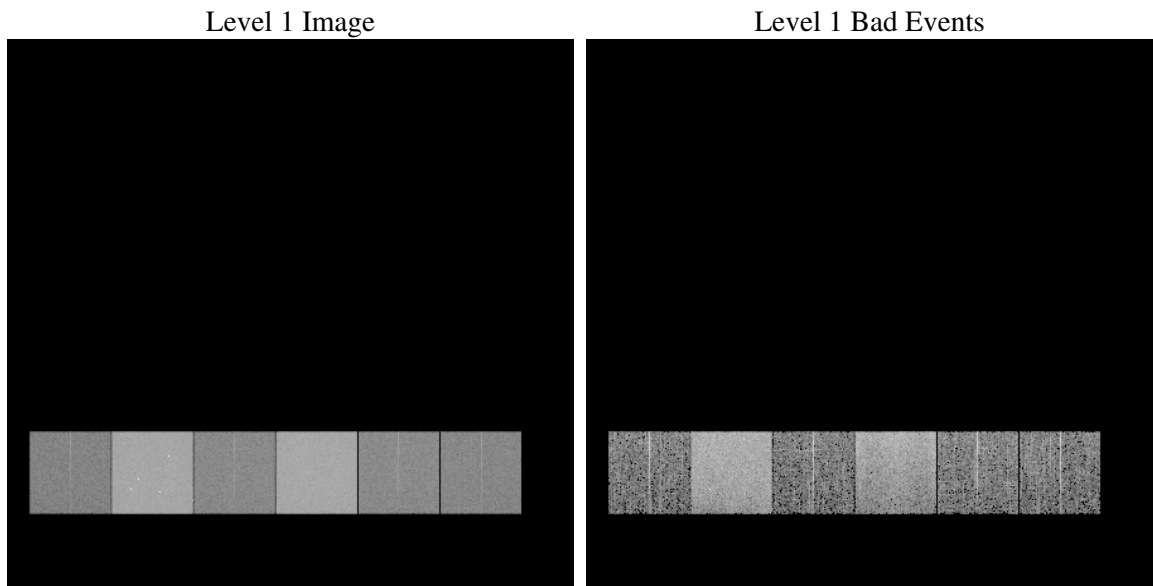
1 Front

seq_num	
obs_id	61472
title	ACIS-456789 diagnostics
observer	CHANDRA engineering request/realtime commanding
object	
dtcycle	0
cycle	P
ra_targ	0.0
dec_targ	0.0
ra_nom	305.02941053849
dec_nom	-35.015495224431
roll_nom	294.51534171956
revision	2
ontime	5665.0653794855
livetime	5593.3309105576
ontime4	2142.6130207777
ontime5	6109.0772247314
ontime6	2385.649860546
ontime7	5665.0653794855
ontime8	2411.6602804214
ontime9	2301.2597905397
l2events	1197742

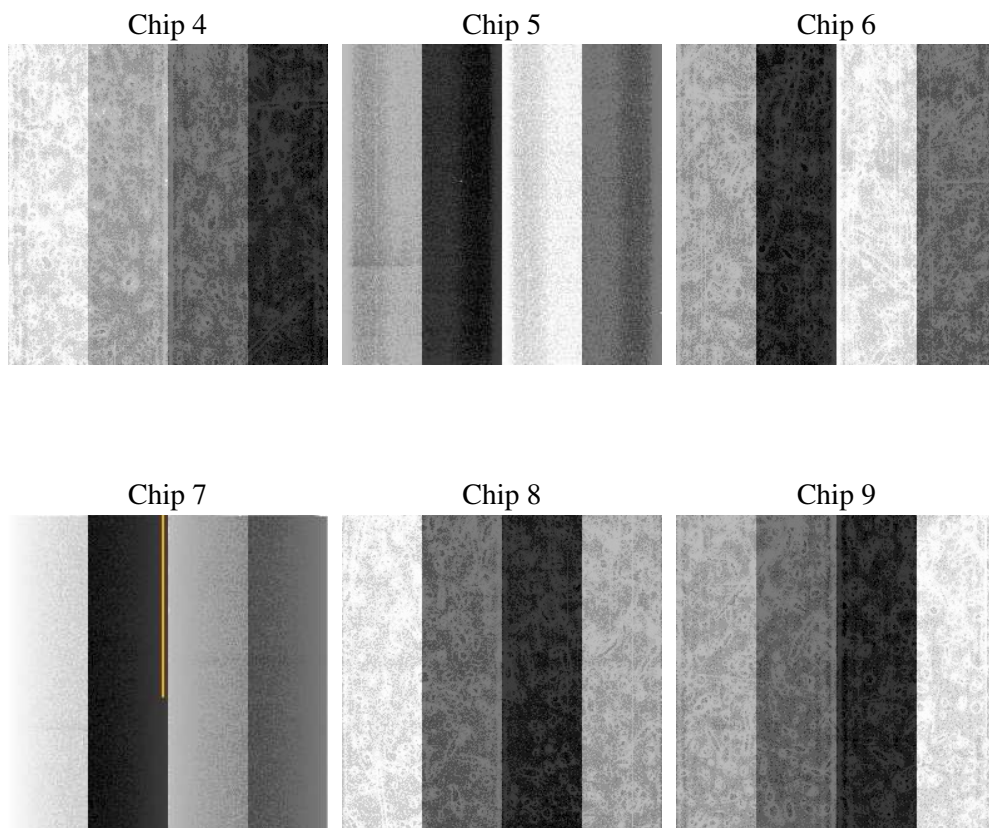
2 OBI

2.1 OBI

2.1.1 Images



2.1.2 Bias



2.1.3 Parameters

obi_num	0
ascdsver	7.6.9
caldsver	3.2.4
date	2007-01-03T12:58:34
revision	2

sched_exp_time	0.0
ontime	5668.531563133
ontime4	2145.5661918074
ontime5	6112.543408379
ontime6	2388.644071579
ontime7	5668.531563133
ontime8	2414.5724114478
ontime9	2304.3771215677
l1events	1426027

2.1.4 Events

	ccd 4	ccd 5	ccd 6	ccd 7	ccd 8	ccd 9
level 1 events	145802	382306	171282	389491	176495	160651
rejected events	19410	52738	18840	42402	21432	19430
rejected %	13%	13%	10%	10%	12%	12%

	ccd 4	ccd 5	ccd 6	ccd 7	ccd 8	ccd 9
grade 0 events	71082	45342	83108	65426	85419	77097
	48%	11%	48%	16%	48%	47%
grade 1 events	431	220	465	174	442	456
	0%	0%	0%	0%	0%	0%
grade 2 events	22271	154914	26446	103671	27437	24956
	15%	40%	15%	26%	15%	15%
grade 3 events	8034	11935	9465	26685	9734	8810
	5%	3%	5%	6%	5%	5%
grade 4 events	7770	11644	9380	25913	9781	8903
	5%	3%	5%	6%	5%	5%
grade 5 events	1251	6308	1506	5857	1586	1520
	0%	1%	0%	1%	0%	0%
grade 6 events	17422	105908	24255	125592	22928	21649
	11%	27%	14%	32%	12%	13%
grade 7 events	17541	46035	16657	36173	19168	17260
	12%	12%	9%	9%	10%	10%

2.2 Compared Parameters

Parameter	Planned	Actual	Parameter	Planned	Actual
Instrument	ACIS	ACIS	Obspar format version number	6	6
Detector	ACIS-456789	ACIS-456789	Obspar file type	PREDICTED	ACTUAL
Grating	NONE	NONE	Obspar update status	NONE	UPDATED
Data mode	FAINT	FAINT	On-chip summing requested	N	N
Observation mode	SECONDARY	SECONDARY	Subarray requested	NONE	NONE
Pointing RA	0	305.0294105384918	Alternating exposures requested	N	N
Pointing Dec	0	-35.01549522443077	Primary exposure time	0.000000	3.2
Pointing Roll	0.0	294.5153417195635			
SIM focus pos (mm)	-0.684267	-0.6828225247311905			
SIM defocus (mm)	0	0.8505141146731063			
SIM translation stage pos (mm)	-190.132523	250.466033080201			
SIM translation stage offset (mm)	0	-0.01005468664627074			
Observation start time	116961668.923	116961668.15492			
Observation start date	2001-09-15T17:21:09	2001-09-15T17:21:08			
Observation end time	117000139.225	117000138.45644			
Observation end date	2001-09-16T04:02:19	2001-09-16T04:02:18			
Read mode	TIMED	TIMED			

2.3 Aspect

2.4 Star Slots

2.5 FID Slots

A Summary

A.1 Status

V&V Scientist	Beth Sundheim
V&V Date (YYYY-MM-DD)	2007.01.04
V&V Edition	1
V&V Disposition and Status	OK
V&V Charge Time	5.66506537

A.2 Comments