

# V&V Reference Report

## L2 ASCDS Version : 8.4.5

Observation 61469 - L2 Version 3  
Chandra X-Ray Center

L2 Processing Date : Sep 24 2012

## Contents

<b>1</b>	<b>Front</b>	<b>2</b>
<b>2</b>	<b>OBI</b>	<b>3</b>
2.1	OBI . . . . .	3
2.1.1	Images . . . . .	3
2.1.2	Bias . . . . .	3
2.1.3	Parameters . . . . .	4
2.1.4	Events . . . . .	4
2.2	Compared Parameters . . . . .	5
2.3	Star Slots . . . . .	6
2.4	FID Slots . . . . .	6
<b>A</b>	<b>Summary</b>	<b>7</b>
A.1	Status . . . . .	7
A.2	Comments . . . . .	7

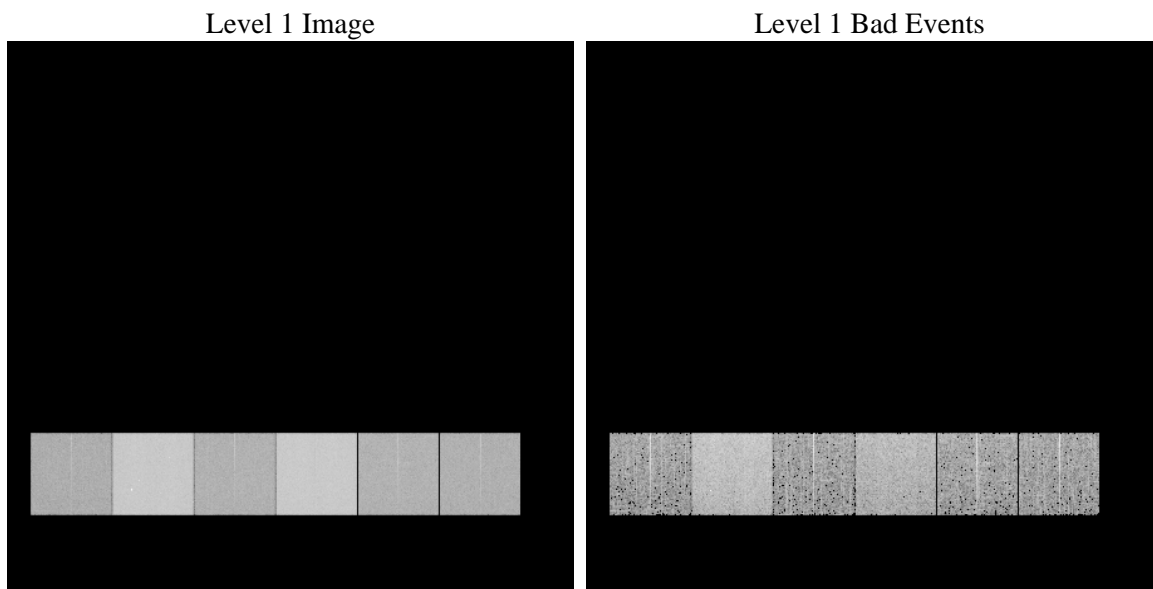
# 1 Front

seq_num	&#160	Sequence number
obs_id	61469	Observation id
title	ACIS-456789 diagnostics	Proposal title
observer	CHANDRA engineering request/realtime commanding	Principal investig
object	&#160	Source name
dtcycle	0	&#160
cycle	P	events from which exps? Prim/Second/Both
ra_targ	0.0	Observer's specified target RA [deg]
dec_targ	0.0	Observer's specified target Dec [deg]
ra_nom	137.00274200803	Nominal RA [deg]
dec_nom	40.028596107125	Nominal Dec [deg]
roll_nom	53.159805865342	Nominal Roll [deg]
revision	3	Processing version of data
ontime	6250.5469186306	Sum of GTIs [s]
livetime	6171.3987299194	Livetime [s]
ontime4	2351.8846054822	Sum of GTIs [s]
ontime5	6778.8222813159	Sum of GTIs [s]
ontime6	2552.5769339055	Sum of GTIs [s]
ontime7	6250.5469186306	Sum of GTIs [s]
ontime8	2610.9155341685	Sum of GTIs [s]
ontime9	2507.2899862677	Sum of GTIs [s]
l2events	1306559	Number of level 2 events

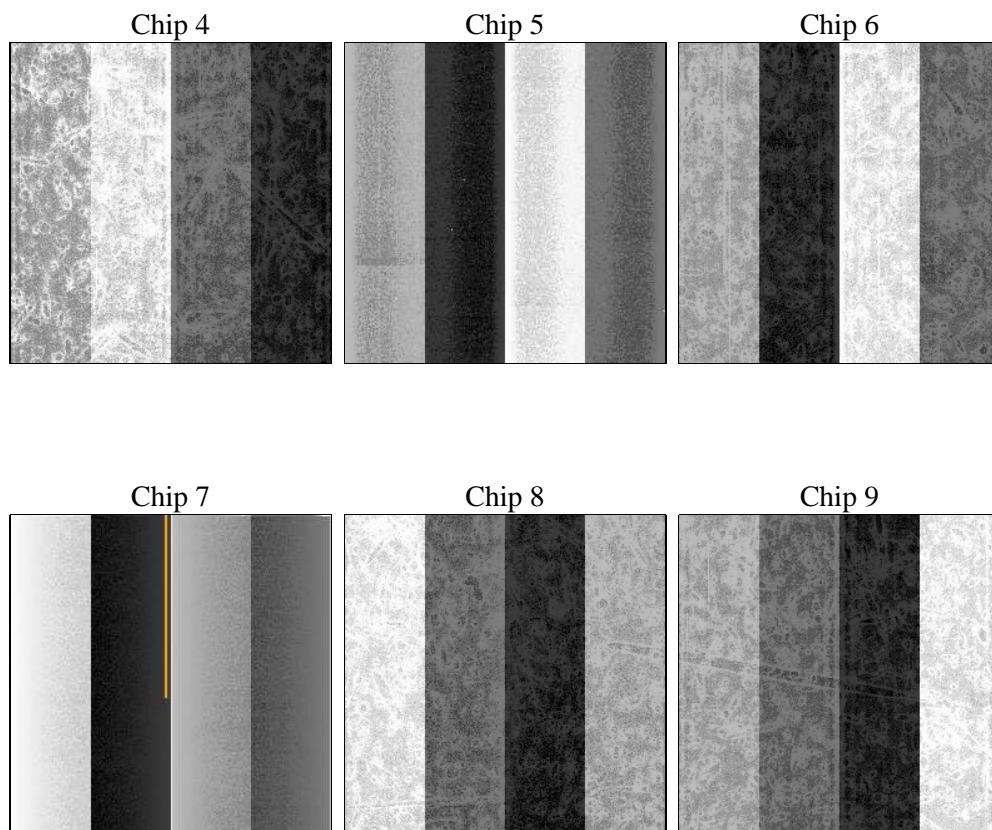
## 2 OBI

### 2.1 OBI

#### 2.1.1 Images



#### 2.1.2 Bias



### 2.1.3 Parameters

obi_num	0	Obi number	sched_exp_time	0.0	[s] Scheduled observation exposure time
ascdsver	8.4.5	Processing system revision	ontime	6250.5469186306	Sum of GTIs [s]
caldsver	4.5.1.1	&#160	ontime4	2351.8846054822	Sum of GTIs [s]
date	2012-09-24T11:26:16	Date and time of file creation	ontime5	6778.8222813159	Sum of GTIs [s]
revision	3	Processing version of data	ontime6	2552.5769339055	Sum of GTIs [s]
			ontime7	6250.5469186306	Sum of GTIs [s]
			ontime8	2610.9155341685	Sum of GTIs [s]
			ontime9	2507.2899862677	Sum of GTIs [s]
			l1events	1545813	Number of level 1 events

### 2.1.4 Events

	ccd 4	ccd 5	ccd 6	ccd 7	ccd 8	ccd 9		ccd 4	ccd 5	ccd 6	ccd 7	ccd 8	ccd 9
level 1 events	158257	416033	182348	425715	188789	174671	grade 0 events	76688	78953	87877	99102	91189	84185
rejected events	22163	54794	22646	37747	24060	22537		48%	18%	48%	23%	48%	48%
rejected %	14%	13%	12%	8%	12%	12%	grade 1 events	409	247	462	260	444	465
								0%	0%	0%	0%	0%	0%
							grade 2 events	24814	140134	27744	86002	29309	27023
								15%	33%	15%	20%	15%	15%
							grade 3 events	8256	20616	9839	39394	10334	9513
								5%	4%	5%	9%	5%	5%
							grade 4 events	8163	20590	9699	39225	10405	9528
								5%	4%	5%	9%	5%	5%
							grade 5 events	1322	9403	1456	6937	1707	1562
								0%	2%	0%	1%	0%	0%
							grade 6 events	19076	104349	25752	127844	24881	23037
								12%	25%	14%	30%	13%	13%
							grade 7 events	19529	41741	19519	26951	20520	19358
								12%	10%	10%	6%	10%	11%

## 2.2 Compared Parameters

Parameter	Planned	Actual	Parameter	Planned	Actual
Instrument	ACIS	ACIS	Obspar format version number	7	7
Detector	ACIS-456789	ACIS-456789	Obspar file type	PREDICTED	ACTUAL
Grating	NONE	NONE	Obspar update status	NONE	UPDATED
Data mode	FAINT	FAINT	On-chip summing requested	N	N
Observation mode	SECONDARY	SECONDARY	Subarray requested	NONE	NONE
[deg] Pointing RA	0	137.0027420080284	Alternating exposures requested	N	N
[deg] Pointing Dec	0	40.02859610712485	[s] Primary exposure time	0.000000	3.2
[deg] Pointing Roll	0.0	53.15980586534167			
[mm] SIM focus pos	-0.684267	-0.6828225247311905			
[mm] SIM defocus	0	0.8505141146731063			
[mm] SIM translation stage pos	-190.132523	250.466033080201			
[mm] SIM translation stage offset	0	-0.01005468664627074			
[s] Observation start time (MET)	117235073.334	117235072.56573			
Observation start date	2001-09-18T21:17:53	2001-09-18T21:17:52			
[s] Observation end time (MET)	117246256.085	117246255.31617			
Observation end date	2001-09-19T00:24:16	2001-09-19T00:24:15			
Read mode	TIMED	TIMED			

## **2.3 Star Slots**

## **2.4 FID Slots**

## **A Summary**

### **A.1 Status**

V&V Scientist	Jen Lauer
V&V Date (YYYY-MM-DD)	2012.09.26
V&V Edition	1
V&V Disposition and Status	OK
V&V Charge Time	6.2505469186306

### **A.2 Comments**