

# V&V Reference Report

## L2 ASCDS Version : 7.6.9

Observation 61469 - L2 Version 001  
Chandra X-Ray Center

L2 Processing Date : Jan 3 2007

## Contents

<b>1</b>	<b>Front</b>	<b>2</b>
<b>2</b>	<b>OBI</b>	<b>3</b>
2.1	OBI . . . . .	3
2.1.1	Images . . . . .	3
2.1.2	Bias . . . . .	3
2.1.3	Parameters . . . . .	4
2.1.4	Events . . . . .	4
2.2	Compared Parameters . . . . .	5
2.3	Aspect . . . . .	6
2.4	Star Slots . . . . .	8
2.5	FID Slots . . . . .	8
<b>A</b>	<b>Summary</b>	<b>9</b>
A.1	Status . . . . .	9
A.2	Comments . . . . .	9

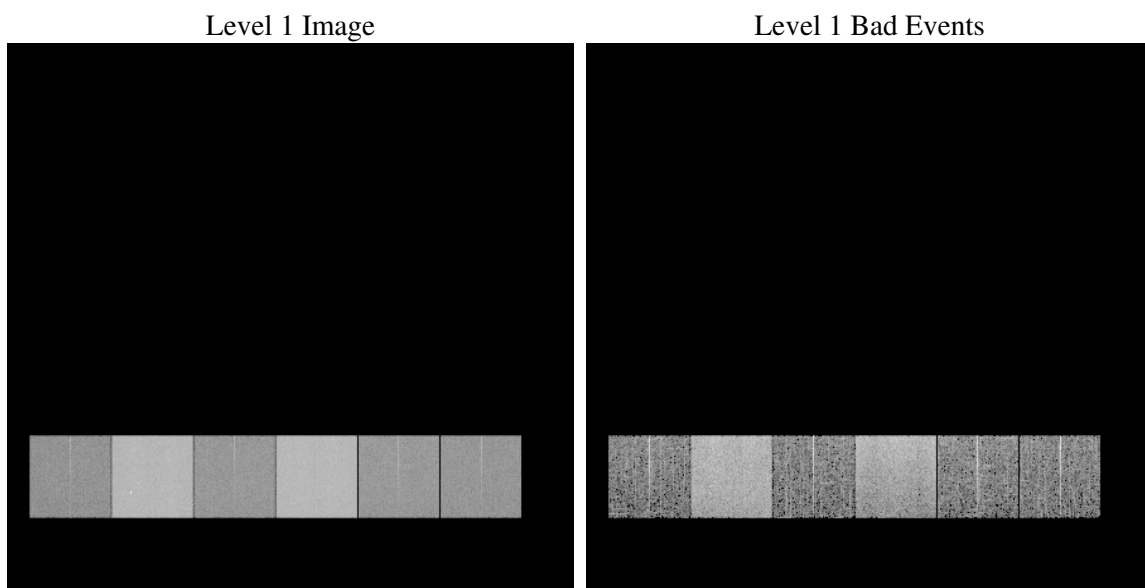
# 1 Front

seq_num	&#160
obs_id	61469
title	ACIS-456789 diagnostics
observer	CHANDRA engineering request/realtime commanding
object	&#160
dtcycle	0
cycle	P
ra_targ	0.0
dec_targ	0.0
ra_nom	137.00274200803
dec_nom	40.028596107125
roll_nom	53.159805865342
revision	2
ontime	6250.5469186455
livetime	6171.3987299341
ontime4	2350.2846054882
ontime5	6778.8222813308
ontime6	2551.1878654808
ontime7	6250.5469186455
ontime8	2609.6085457504
ontime9	2505.6899862736
l2events	1281725

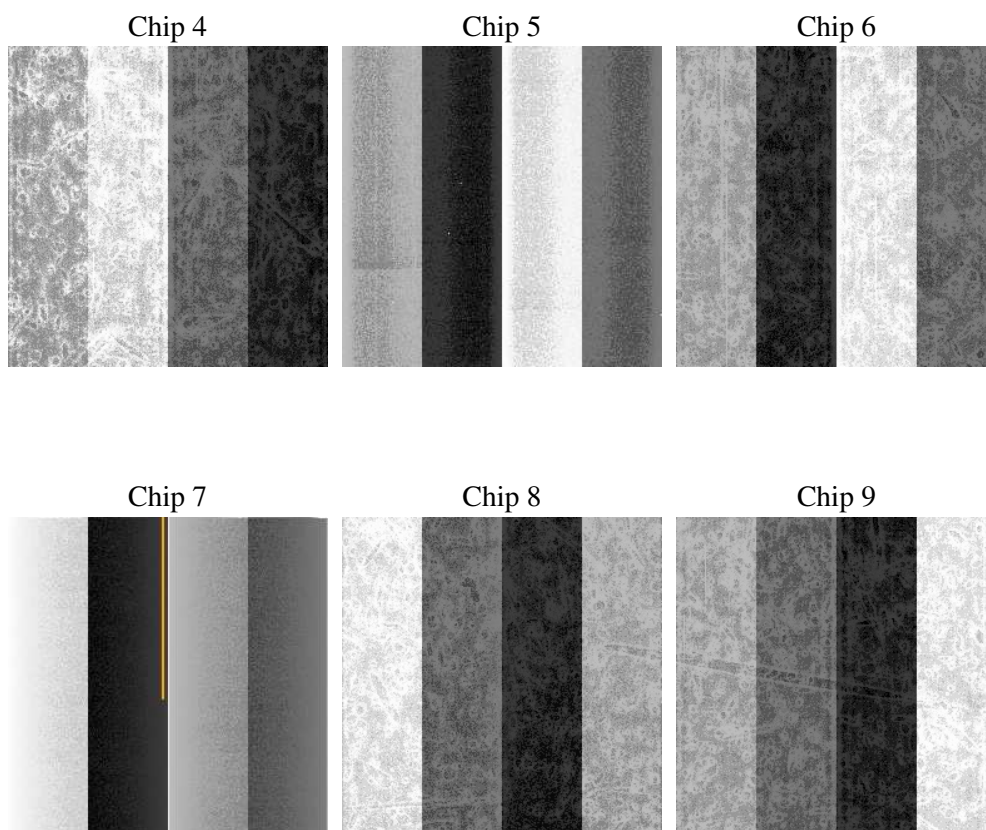
## 2 OBI

### 2.1 OBI

#### 2.1.1 Images



#### 2.1.2 Bias



### 2.1.3 Parameters

obi_num	0
ascdsver	7.6.9
caldsver	3.2.4
date	2007-01-03T20:04:10
revision	2

sched_exp_time	0.0
ontime	6310.2451372147
ontime4	2369.1979806125
ontime5	6841.7615199834
ontime6	2573.3833205998
ontime7	6310.2451372147
ontime8	2634.9629608542
ontime9	2528.0085613877
l1events	1545813

### 2.1.4 Events

	ccd 4	ccd 5	ccd 6	ccd 7	ccd 8	ccd 9
level 1 events	158257	416033	182348	425715	188789	174671
rejected events	22384	64304	22890	52683	24295	22747
rejected %	14%	15%	12%	12%	12%	13%

	ccd 4	ccd 5	ccd 6	ccd 7	ccd 8	ccd 9
grade 0 events	76482	38416	87680	67468	91080	84078
	48%	9%	48%	15%	48%	48%
grade 1 events	403	96	455	173	434	458
	0%	0%	0%	0%	0%	0%
grade 2 events	25021	173503	27941	115115	29420	27132
	15%	41%	15%	27%	15%	15%
grade 3 events	8223	10806	9803	27348	10315	9492
	5%	2%	5%	6%	5%	5%
grade 4 events	8132	10579	9666	27116	10376	9502
	5%	2%	5%	6%	5%	5%
grade 5 events	1310	6827	1453	6466	1709	1560
	0%	1%	0%	1%	0%	0%
grade 6 events	19122	121880	25797	139623	24916	23061
	12%	29%	14%	32%	13%	13%
grade 7 events	19564	53926	19553	42406	20539	19388
	12%	12%	10%	9%	10%	11%

## 2.2 Compared Parameters

Parameter	Planned	Actual	Parameter	Planned	Actual
Instrument	ACIS	ACIS	Obspar format version number	6	6
Detector	ACIS-456789	ACIS-456789	Obspar file type	PREDICTED	ACTUAL
Grating	NONE	NONE	Obspar update status	NONE	UPDATED
Data mode	FAINT	FAINT	On-chip summing requested	N	N
Observation mode	SECONDARY	SECONDARY	Subarray requested	NONE	NONE
Pointing RA	0	137.0027420080284	Alternating exposures requested	N	N
Pointing Dec	0	40.0285961071248	Primary exposure time	0.000000	3.2
Pointing Roll	0.0	53.15980586534166			
SIM focus pos (mm)	-0.684267	-0.6828225247311905			
SIM defocus (mm)	0	0.8505141146731063			
SIM translation stage pos (mm)	-190.132523	250.466033080201			
SIM translation stage offset (mm)	0	-0.01005468664627074			
Observation start time	117235073.334	117235072.56573			
Observation start date	2001-09-18T21:17:53	2001-09-18T21:17:52			
Observation end time	117246256.085	117246255.31617			
Observation end date	2001-09-19T00:24:16	2001-09-19T00:24:15			
Read mode	TIMED	TIMED			

## 2.3 Aspect



## **2.4 Star Slots**

## **2.5 FID Slots**



# A Summary

## A.1 Status

V&V Scientist	Beth Sundheim
V&V Date (YYYY-MM-DD)	2007.01.04
V&V Edition	1
V&V Disposition and Status	OK
V&V Charge Time	6.25054691

## A.2 Comments

Focal plane temperature is warmer than -118.7 C degrees during the first half of this observation. The ACIS spectral response calibration for the front-illuminated chips is less accurate at these warmer temperatures than it is at -119.7 C.