

V&V Reference Report

L2 ASCDS Version : 8.4.5

Observation 61465 - L2 Version 3
Chandra X-Ray Center

L2 Processing Date : Oct 1 2012

Contents

1	Front	2
2	OBI	3
2.1	OBI	3
2.1.1	Images	3
2.1.2	Bias	3
2.1.3	Parameters	4
2.1.4	Events	4
2.2	Compared Parameters	5
2.3	Star Slots	6
2.4	FID Slots	6
A	Summary	7
A.1	Status	7
A.2	Comments	7

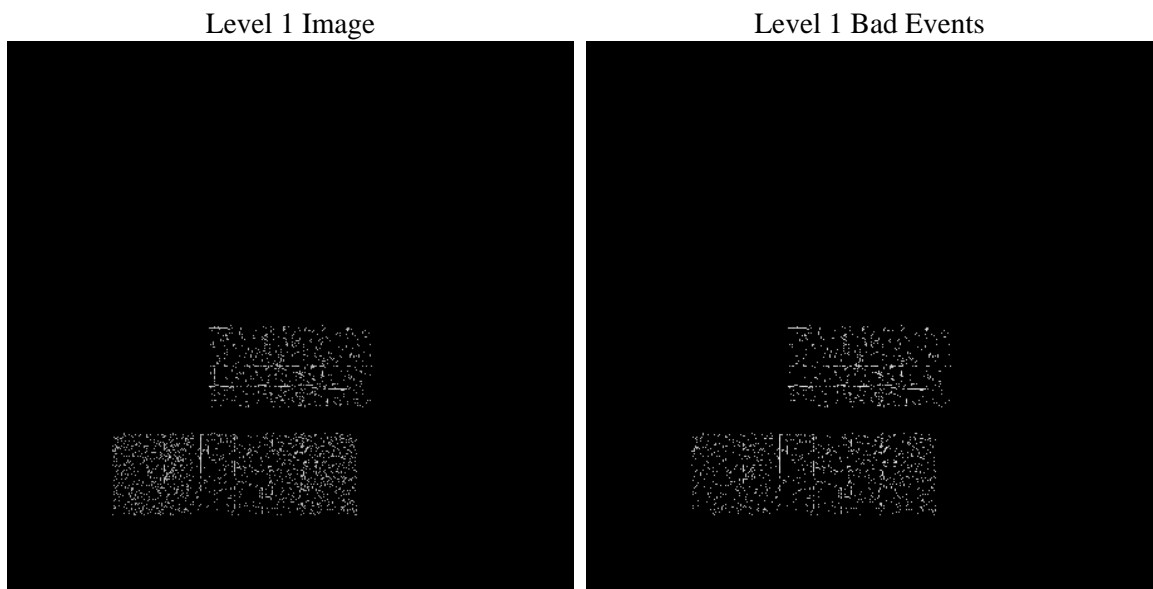
1 Front

seq_num	 	Sequence number
obs_id	61465	Observation id
title	ACIS-23567 diagnostics	Proposal title
observer	CHANDRA engineering request/realtime commanding	Principal investig
object	 	Source name
dtcycle	0	
cycle	P	events from which exps? Prim/Second/Both
ra_targ	0.0	Observer's specified target RA [deg]
dec_targ	0.0	Observer's specified target Dec [deg]
ra_nom	244.86130309821	Nominal RA [deg]
dec_nom	-39.701912438062	Nominal Dec [deg]
roll_nom	253.81420156905	Nominal Roll [deg]
revision	3	Processing version of data
ontime	74.399999856949	Sum of GTIs [s]
livetime	73.427909086335	Livetime [s]
ontime2	74.399999856949	Sum of GTIs [s]
ontime3	74.399999856949	Sum of GTIs [s]
ontime5	74.399999856949	Sum of GTIs [s]
ontime6	74.399999856949	Sum of GTIs [s]
ontime7	74.399999856949	Sum of GTIs [s]
l2events	740	Number of level 2 events

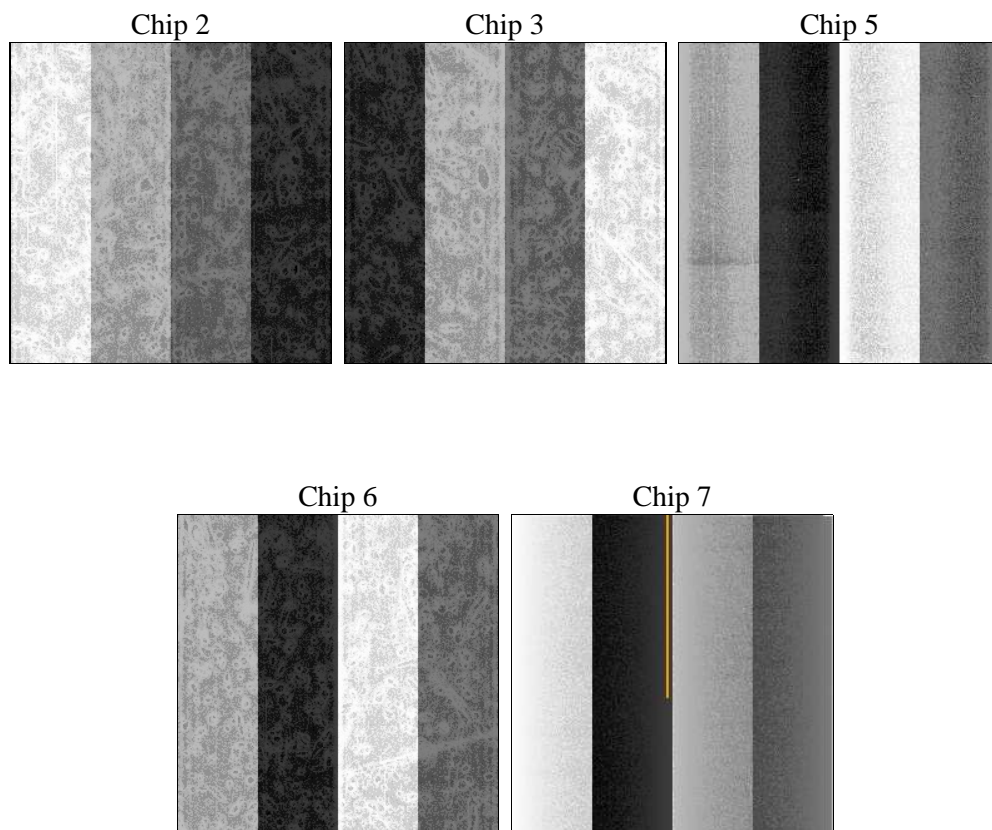
2 OBI

2.1 OBI

2.1.1 Images



2.1.2 Bias



2.1.3 Parameters

obi_num	0	Obi number	sched_exp_time	0.0	[s] Scheduled observation exposure time
ascdsver	8.4.5	Processing system revision	ontime	74.399999856949	Sum of GTIs [s]
caldbver	4.5.2	 	ontime2	74.399999856949	Sum of GTIs [s]
date	2012-10-01T21:21:18	Date and time of file creation	ontime3	74.399999856949	Sum of GTIs [s]
revision	3	Processing version of data	ontime5	74.399999856949	Sum of GTIs [s]
			ontime6	74.399999856949	Sum of GTIs [s]
			ontime7	74.399999856949	Sum of GTIs [s]
			l1events	3200	Number of level 1 events

2.1.4 Events

	ccd 2	ccd 3	ccd 5	ccd 6	ccd 7
level 1 events	572	521	740	622	745
rejected events	480	460	383	570	482
rejected %	83%	88%	51%	91%	64%

	ccd 2	ccd 3	ccd 5	ccd 6	ccd 7
grade 0 events	35	32	58	20	28
	6%	6%	7%	3%	3%
grade 1 events	1	0	9	0	1
	0%	0%	1%	0%	0%
grade 2 events	21	15	105	10	56
	3%	2%	14%	1%	7%
grade 3 events	9	3	13	3	26
	1%	0%	1%	0%	3%
grade 4 events	3	1	13	6	16
	0%	0%	1%	0%	2%
grade 5 events	17	18	55	22	77
	2%	3%	7%	3%	10%
grade 6 events	24	10	168	13	137
	4%	1%	22%	2%	18%
grade 7 events	462	442	319	548	404
	80%	84%	43%	88%	54%

2.2 Compared Parameters

Parameter	Planned	Actual
Instrument	ACIS	ACIS
Detector	ACIS-23567	ACIS-23567
Grating	NONE	NONE
Data mode	VFAINT	VFAINT
Observation mode	SECONDARY	SECONDARY
[deg] Pointing RA	0	244.8613030982123
[deg] Pointing Dec	0	-39.70191243806184
[deg] Pointing Roll	0.0	253.8142015690472
[mm] SIM focus pos	-0.684267	-0.6828225247311905
[mm] SIM defocus	0	0.09952569084879603
[mm] SIM translation stage pos	-190.132523	-233.5874344608287
[mm] SIM translation stage offset	0	-0.005018542100998502
[s] Observation start time (MET)	117527382.845755	117527382.0773
Observation start date	2001-09-22T06:29:43	2001-09-22T06:29:42
[s] Observation end time (MET)	117528887.545815	117528886.77736
Observation end date	2001-09-22T06:54:48	2001-09-22T06:54:46
Read mode	TIMED	TIMED

Parameter	Planned	Actual
Obspar format version number	7	7
Obspar file type	PREDICTED	ACTUAL
Obspar update status	NONE	UPDATED
On-chip summing requested	N	N
Subarray requested	NONE	NONE
Alternating exposures requested	N	N
[s] Primary exposure time	3.1	3.1

2.3 Star Slots

2.4 FID Slots

A Summary

A.1 Status

V&V Scientist	Joy Nichols
V&V Date (YYYY-MM-DD)	2012.10.12
V&V Edition	1
V&V Disposition and Status	OK
V&V Charge Time	0.074399999856949

A.2 Comments