

V&V Reference Report

L2 ASCDS Version : 7.6.9

Observation 61465 - L2 Version 001
Chandra X-Ray Center

L2 Processing Date : Jan 25 2007

Contents

1	Front	2
2	OBI	3
2.1	OBI	3
2.1.1	Images	3
2.1.2	Bias	3
2.1.3	Parameters	4
2.1.4	Events	4
2.2	Compared Parameters	5
2.3	Star Slots	6
2.4	FID Slots	6
A	Summary	7
A.1	Status	7
A.2	Comments	7

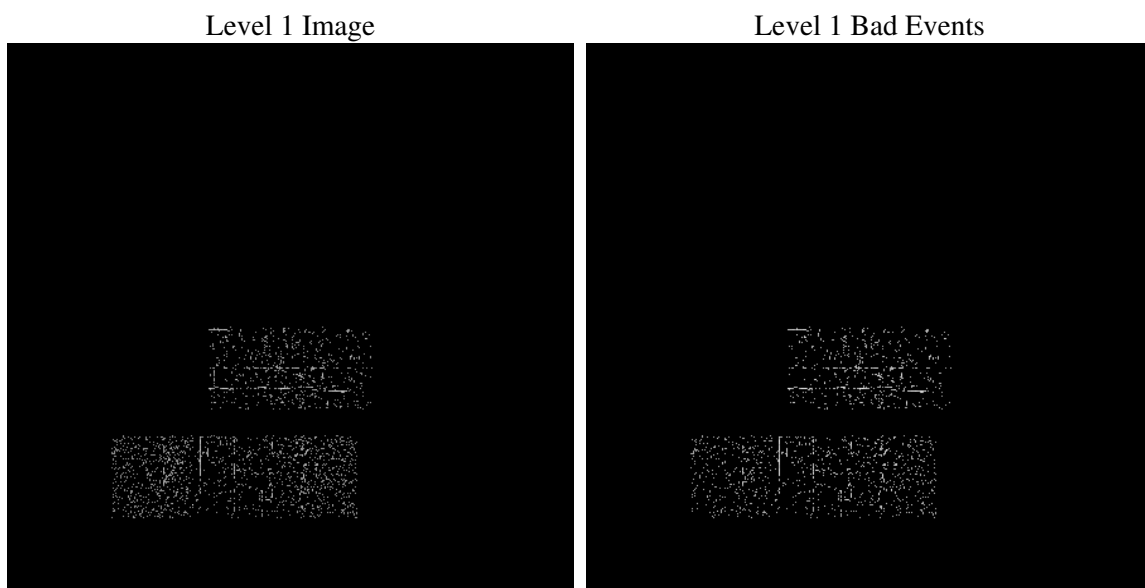
1 Front

seq_num	
obs_id	61465
title	ACIS-23567 diagnostics
observer	CHANDRA engineering request/realtime commanding
object	
dtcycle	0
cycle	P
ra_targ	0.0
dec_targ	0.0
ra_nom	244.86130309821
dec_nom	-39.701912438062
roll_nom	253.81420156905
revision	2
ontime	72.876633688807
livetime	71.924446818666
ontime2	72.999733760953
ontime3	72.958693772554
ontime5	72.917653769255
ontime6	73.040773764253
ontime7	72.876633688807
l2events	712

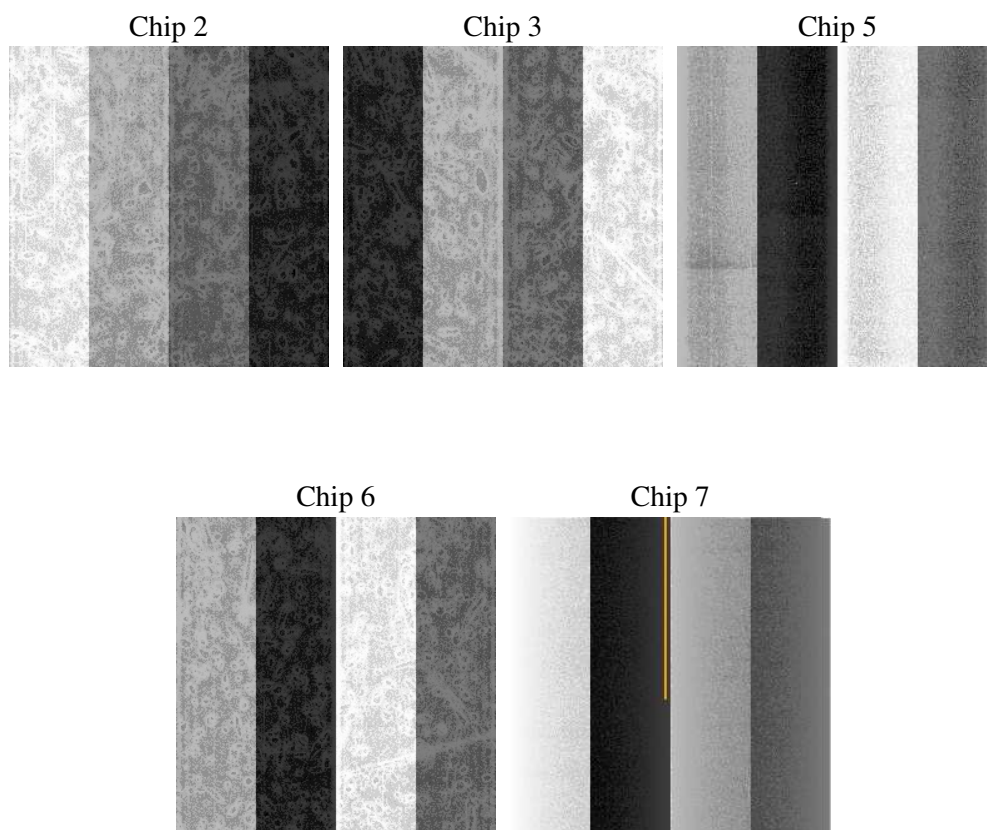
2 OBI

2.1 OBI

2.1.1 Images



2.1.2 Bias



2.1.3 Parameters

obi_num	0
ascdsver	7.6.10
caldbver	3.3.0
date	2007-01-25T17:47:13
revision	2

sched_exp_time	0.0
ontime	72.876633688807
ontime2	72.999733760953
ontime3	72.958693772554
ontime5	72.917653769255
ontime6	73.040773764253
ontime7	72.876633688807
llevents	3200

2.1.4 Events

	ccd 2	ccd 3	ccd 5	ccd 6	ccd 7
level 1 events	572	521	740	622	745
rejected events	483	463	394	572	495
rejected %	84%	88%	53%	91%	66%

	ccd 2	ccd 3	ccd 5	ccd 6	ccd 7
grade 0 events	35	32	58	20	28
	6%	6%	7%	3%	3%
grade 1 events	1	0	9	0	1
	0%	0%	1%	0%	0%
grade 2 events	21	15	105	10	56
	3%	2%	14%	1%	7%
grade 3 events	9	3	13	3	26
	1%	0%	1%	0%	3%
grade 4 events	3	1	13	6	16
	0%	0%	1%	0%	2%
grade 5 events	17	18	55	22	77
	2%	3%	7%	3%	10%
grade 6 events	24	10	168	13	137
	4%	1%	22%	2%	18%
grade 7 events	462	442	319	548	404
	80%	84%	43%	88%	54%

2.2 Compared Parameters

Parameter	Planned	Actual	Parameter	Planned	Actual
Instrument	ACIS	ACIS	Obspar format version number	6	6
Detector	ACIS-23567	ACIS-23567	Obspar file type	PREDICTED	ACTUAL
Grating	NONE	NONE	Obspar update status	NONE	UPDATED
Data mode	VFAINT	VFAINT	On-chip summing requested	N	N
Observation mode	SECONDARY	SECONDARY	Subarray requested	NONE	NONE
Pointing RA	0	244.8613030982123	Alternating exposures requested	N	N
Pointing Dec	0	-39.70191243806185	Primary exposure time	3.1	3.1
Pointing Roll	0.0	253.8142015690472			
SIM focus pos (mm)	-0.684267	-0.6828225247311905			
SIM defocus (mm)	0	0.09952569084879603			
SIM translation stage pos (mm)	-190.132523	-233.5874344608287			
SIM translation stage offset (mm)	0	-0.005018542100998502			
Observation start time	117527382.845755	117527382.0773			
Observation start date	2001-09-22T06:29:43	2001-09-22T06:29:42			
Observation end time	117528887.545815	117528886.77736			
Observation end date	2001-09-22T06:54:48	2001-09-22T06:54:46			
Read mode	TIMED	TIMED			

2.3 Star Slots

2.4 FID Slots

A Summary

A.1 Status

V&V Scientist	Beth Sundheim
V&V Date (YYYY-MM-DD)	2007.01.25
V&V Edition	1
V&V Disposition and Status	OK
V&V Charge Time	0.07287663

A.2 Comments