

V&V Reference Report

L2 ASCDS Version : 7.6.10

Observation 61436 - L2 Version 001
Chandra X-Ray Center

L2 Processing Date : Jan 10 2007

Contents

1	Front	2
2	OBI	3
2.1	OBI	3
2.1.1	Images	3
2.1.2	Bias	3
2.1.3	Parameters	4
2.1.4	Events	4
2.2	Compared Parameters	5
2.3	Star Slots	6
2.4	FID Slots	6
A	Summary	7
A.1	Status	7
A.2	Comments	7

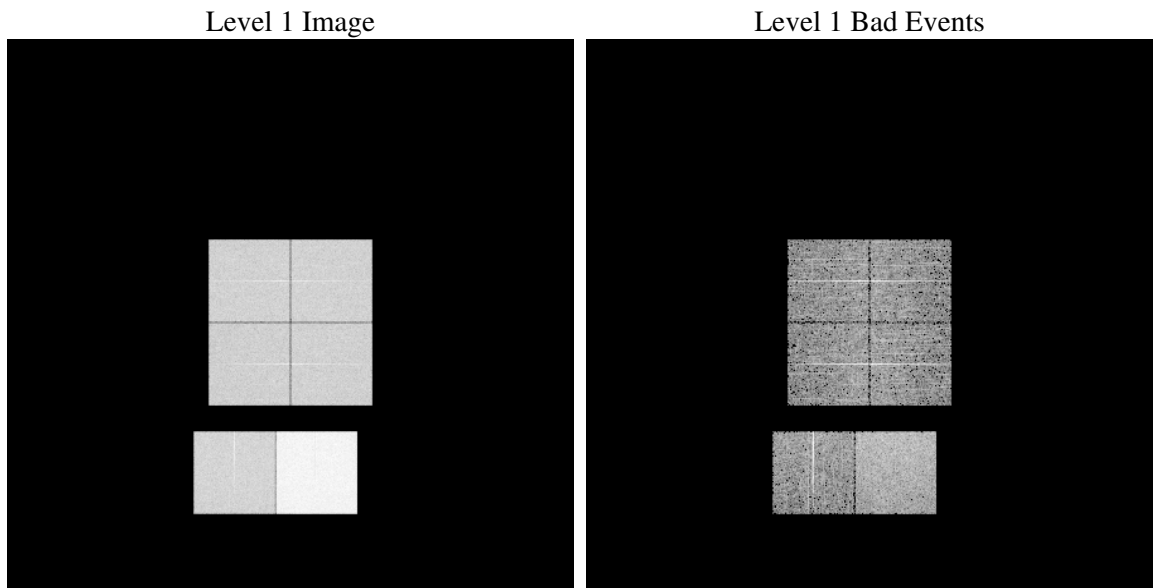
1 Front

seq_num	
obs_id	61436
title	ACIS-012367 diagnostics
observer	CHANDRA engineering request/realtime commanding
object	
dtcycle	0
cycle	P
ra_targ	0.0
dec_targ	0.0
ra_nom	128.99061458817
dec_nom	35.027583361678
roll_nom	72.839616859558
revision	2
ontime	7811.3501790315
livetime	7712.4381596342
ontime0	3118.4575521499
ontime1	3160.6316335052
ontime2	2946.7644726336
ontime3	3001.6980025321
ontime6	3228.7754437774
ontime7	7811.3501790315
l2events	1332001

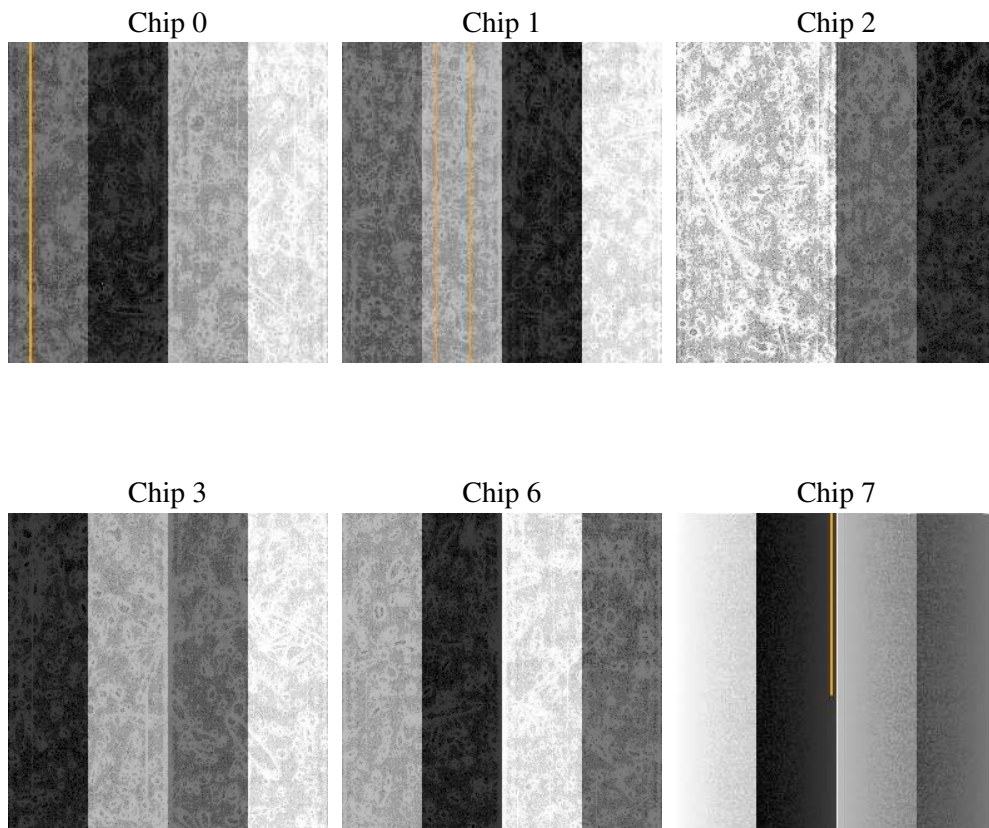
2 OBI

2.1 OBI

2.1.1 Images



2.1.2 Bias



2.1.3 Parameters

obi_num	0
ascdsver	7.6.10
caldbver	3.3.0
date	2007-01-10T16:37:11
revision	2

sched_exp_time	0.0
ontime	7811.3501790315
ontime0	3118.4575521499
ontime1	3160.6316335052
ontime2	2946.7644726336
ontime3	3001.6980025321
ontime6	3228.7754437774
ontime7	7811.3501790315
llevents	1543359

2.1.4 Events

	ccd 0	ccd 1	ccd 2	ccd 3	ccd 6	ccd 7
level 1 events	205318	207170	195766	201166	221807	512132
rejected events	22866	22156	22485	23457	24370	40411
rejected %	11%	10%	11%	11%	10%	7%

	ccd 0	ccd 1	ccd 2	ccd 3	ccd 6	ccd 7
grade 0 events	100693	102044	96790	99565	107636	119517
	49%	49%	49%	49%	48%	23%
grade 1 events	499	542	479	525	503	305
	0%	0%	0%	0%	0%	0%
grade 2 events	32370	32751	30492	31154	34246	104128
	15%	15%	15%	15%	15%	20%
grade 3 events	11463	11604	10883	11233	12229	47914
	5%	5%	5%	5%	5%	9%
grade 4 events	11730	11887	10689	11134	12198	47314
	5%	5%	5%	5%	5%	9%
grade 5 events	1561	1552	1509	1591	1858	8562
	0%	0%	0%	0%	0%	1%
grade 6 events	26655	26884	24922	24810	31649	153128
	12%	12%	12%	12%	14%	29%
grade 7 events	20347	19906	20002	21154	21488	31264
	9%	9%	10%	10%	9%	6%

2.2 Compared Parameters

Parameter	Planned	Actual	Parameter	Planned	Actual
Instrument	ACIS	ACIS	Obspar format version number	6	6
Detector	ACIS-012367	ACIS-012367	Obspar file type	PREDICTED	ACTUAL
Grating	NONE	NONE	Obspar update status	NONE	UPDATED
Data mode	FAINT	FAINT	On-chip summing requested	N	N
Observation mode	SECONDARY	SECONDARY	Subarray requested	NONE	NONE
Pointing RA	0	128.990614588171	Alternating exposures requested	N	N
Pointing Dec	0	35.02758336167785	Primary exposure time	0.000000	3.2
Pointing Roll	0.0	72.83961685955815			
SIM focus pos (mm)	-0.782348	-0.6828225247311905			
SIM defocus (mm)	0	0.8505141146731063			
SIM translation stage pos (mm)	-233.592463	250.466033080201			
SIM translation stage offset (mm)	0	-0.01005468664627074			
Observation start time	119740829.434	119740828.6651			
Observation start date	2001-10-17T21:20:29	2001-10-17T21:20:28			
Observation end time	119762141.234	119762140.46595			
Observation end date	2001-10-18T03:15:41	2001-10-18T03:15:40			
Read mode	TIMED	TIMED			

2.3 Star Slots

2.4 FID Slots

A Summary

A.1 Status

V&V Scientist	Jen Lauer
V&V Date (YYYY-MM-DD)	2007.01.10
V&V Edition	1
V&V Disposition and Status	OK
V&V Charge Time	7.81135017

A.2 Comments