

V&V Reference Report

L2 ASCDS Version : 7.6.10

Observation 61430 - L2 Version 001
Chandra X-Ray Center

L2 Processing Date : Jan 11 2007

Contents

1	Front	2
2	OBI	3
2.1	OBI	3
2.1.1	Images	3
2.1.2	Bias	3
2.1.3	Parameters	4
2.1.4	Events	4
2.2	Compared Parameters	5
2.3	Star Slots	6
2.4	FID Slots	6
A	Summary	7
A.1	Status	7
A.2	Comments	7

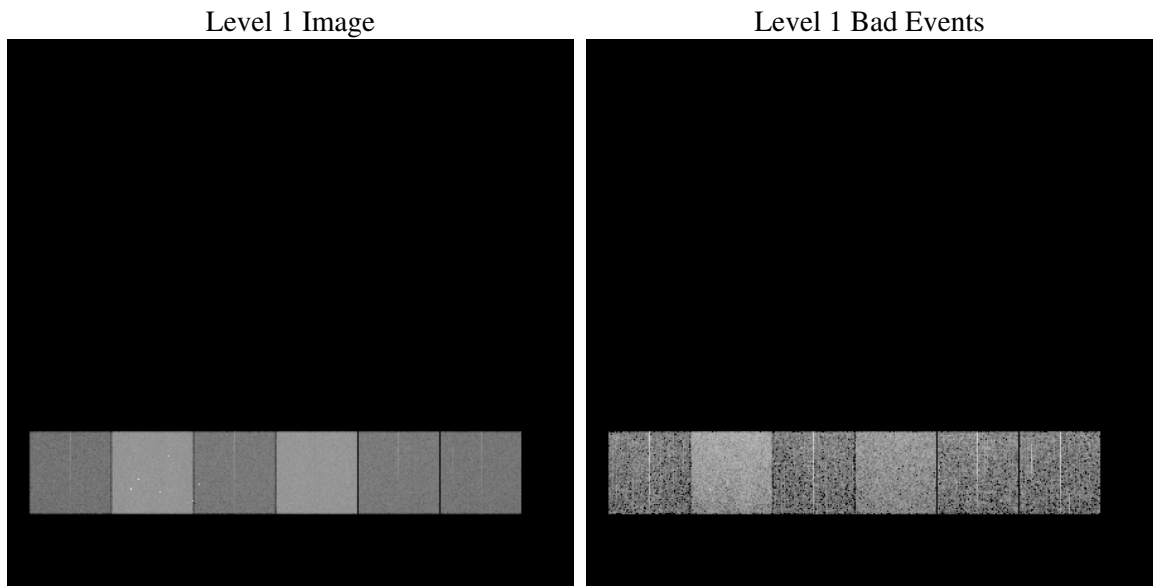
1 Front

seq_num	
obs_id	61430
title	ACIS-456789 diagnostics
observer	CHANDRA engineering request/realtime commanding
object	
dtcycle	0
cycle	P
ra_targ	0.0
dec_targ	0.0
ra_nom	139.9907621873
dec_nom	60.028293281621
roll_nom	66.669299497461
revision	2
ontime	5949.7897908092
livetime	5874.4499699446
ontime4	2287.5907353014
ontime5	6367.9144737124
ontime6	2524.1454950124
ontime7	5949.7897908092
ontime8	2569.6020551175
ontime9	2430.0322949588
l2events	1220588

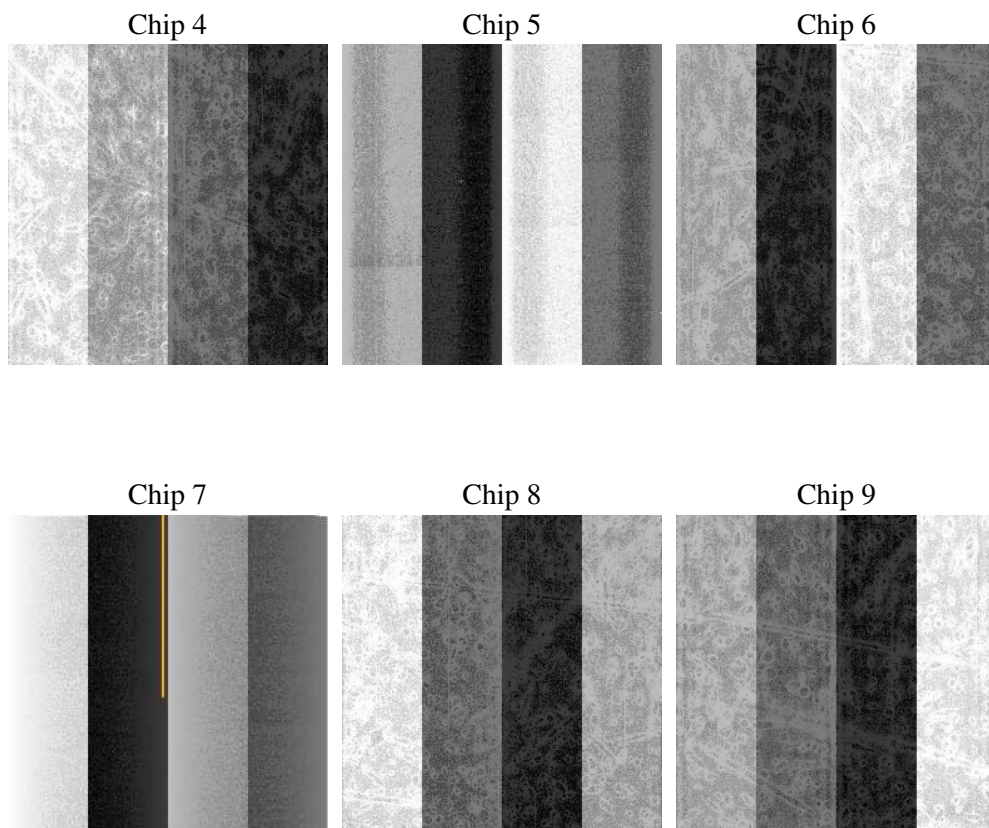
2 OBI

2.1 OBI

2.1.1 Images



2.1.2 Bias



2.1.3 Parameters

obi_num	1
ascdsver	7.6.10
caldbver	3.3.0
date	2007-01-11T04:48:51
revision	2

sched_exp_time	0.0
ontime	5949.7897908092
ontime4	2287.5907353014
ontime5	6367.9144737124
ontime6	2524.1454950124
ontime7	5949.7897908092
ontime8	2569.6020551175
ontime9	2430.0322949588
l1events	1424741

2.1.4 Events

	ccd 4	ccd 5	ccd 6	ccd 7	ccd 8	ccd 9
level 1 events	147155	380526	173247	387400	177292	159121
rejected events	18287	42110	18090	30136	20535	18252
rejected %	12%	11%	10%	7%	11%	11%

	ccd 4	ccd 5	ccd 6	ccd 7	ccd 8	ccd 9
grade 0 events	72846	88696	84277	90968	86498	77437
	49%	23%	48%	23%	48%	48%
grade 1 events	401	398	384	245	402	389
	0%	0%	0%	0%	0%	0%
grade 2 events	22898	115984	27420	79294	27927	24882
	15%	30%	15%	20%	15%	15%
grade 3 events	7817	22857	9465	36370	9798	8563
	5%	6%	5%	9%	5%	5%
grade 4 events	7997	22415	9635	36222	9943	8783
	5%	5%	5%	9%	5%	5%
grade 5 events	1228	8164	1375	6293	1611	1352
	0%	2%	0%	1%	0%	0%
grade 6 events	17310	88464	24360	114410	22591	21204
	11%	23%	14%	29%	12%	13%
grade 7 events	16658	33548	16331	23598	18522	16511
	11%	8%	9%	6%	10%	10%

2.2 Compared Parameters

Parameter	Planned	Actual	Parameter	Planned	Actual
Instrument	ACIS	ACIS	Obspar format version number	6	6
Detector	ACIS-456789	ACIS-456789	Obspar file type	PREDICTED	ACTUAL
Grating	NONE	NONE	Obspar update status	NONE	UPDATED
Data mode	FAINT	FAINT	On-chip summing requested	N	N
Observation mode	SECONDARY	SECONDARY	Subarray requested	NONE	NONE
Pointing RA	0	139.9907621872995	Alternating exposures requested	N	N
Pointing Dec	0	60.02829328162125	Primary exposure time	0.000000	3.2
Pointing Roll	0.0	66.66929949746103			
SIM focus pos (mm)	-0.684267	-0.6828225247311905			
SIM defocus (mm)	0	0.8505141146731063			
SIM translation stage pos (mm)	-190.132523	250.466033080201			
SIM translation stage offset (mm)	0	-0.01005468664627074			
Observation start time	120392145.209	120392144.44097			
Observation start date	2001-10-25T10:15:45	2001-10-25T10:15:44			
Observation end time	120402188.16	120402187.39137			
Observation end date	2001-10-25T13:03:08	2001-10-25T13:03:07			
Read mode	TIMED	TIMED			

2.3 Star Slots

2.4 FID Slots

A Summary

A.1 Status

V&V Scientist	Jen Lauer
V&V Date (YYYY-MM-DD)	2007.01.11
V&V Edition	1
V&V Disposition and Status	OK
V&V Charge Time	5.94978979

A.2 Comments