

V&V Reference Report

L2 ASCDS Version : 7.6.10

Observation 61420 - L2 Version 001
Chandra X-Ray Center

L2 Processing Date : Jan 13 2007

Contents

1	Front	2
2	OBI	3
2.1	OBI	3
2.1.1	Images	3
2.1.2	Bias	3
2.1.3	Parameters	4
2.1.4	Events	4
2.2	Compared Parameters	5
2.3	Star Slots	6
2.4	FID Slots	6
A	Summary	7
A.1	Status	7
A.2	Comments	7

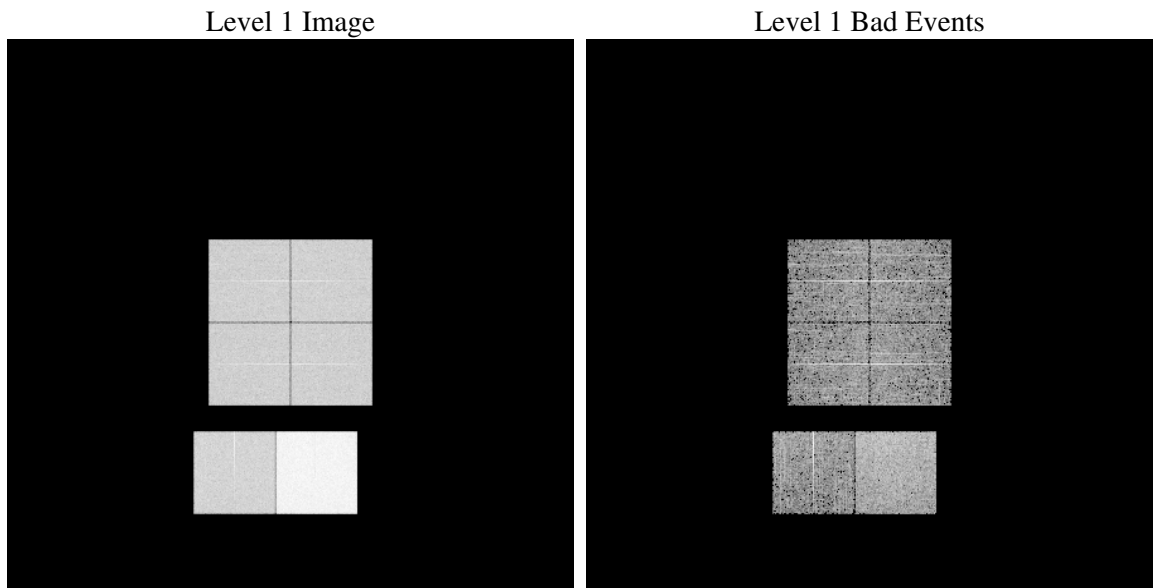
1 Front

seq_num	
obs_id	61420
title	ACIS-012367 diagnostics
observer	CHANDRA engineering request/realtime commanding
object	
dtcycle	0
cycle	P
ra_targ	0.0
dec_targ	0.0
ra_nom	140.98312269507
dec_nom	60.02734816289
roll_nom	74.321088407536
revision	2
ontime	7272.5811699778
livetime	7180.4913681809
ontime0	2859.0787318796
ontime1	2891.5295738727
ontime2	2745.7250700295
ontime3	2784.453090921
ontime6	3026.9007716626
ontime7	7272.5811699778
l2events	1224243

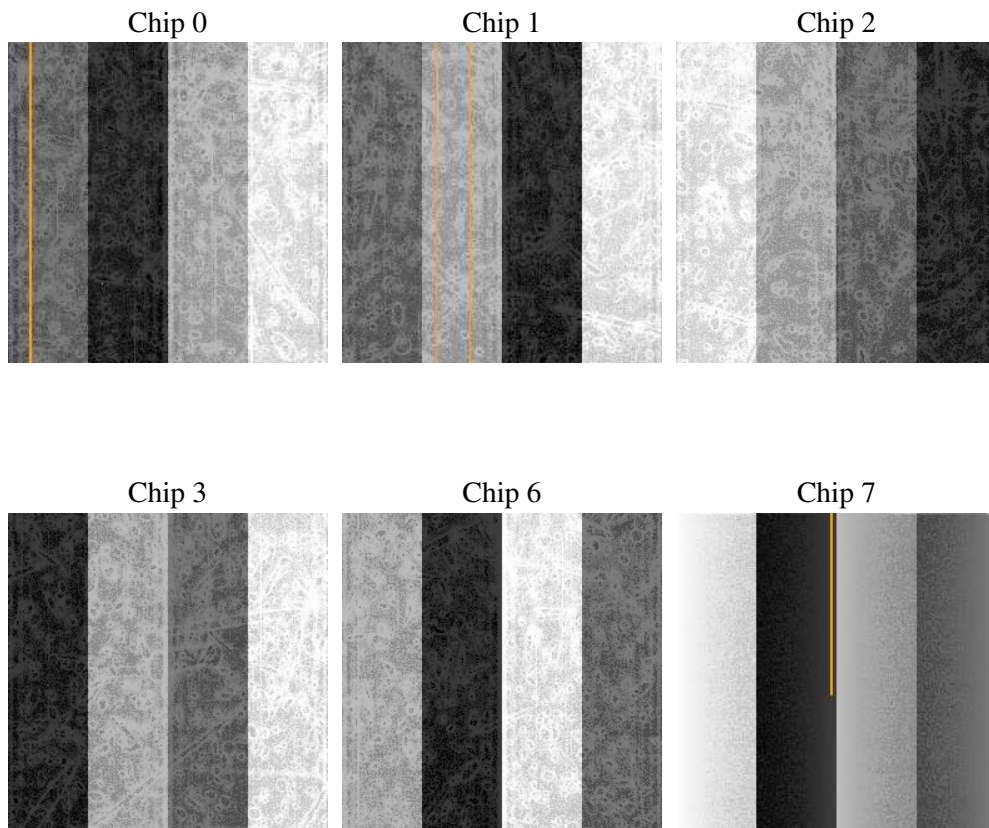
2 OBI

2.1 OBI

2.1.1 Images



2.1.2 Bias



2.1.3 Parameters

obi_num	0
ascdsver	7.6.10
caldsver	3.3.0
date	2007-01-13T17:46:28
revision	2

sched_exp_time	0.0
ontime	7272.5811699778
ontime0	2859.0787318796
ontime1	2891.5295738727
ontime2	2745.7250700295
ontime3	2784.453090921
ontime6	3026.9007716626
ontime7	7272.5811699778
l1events	1421226

2.1.4 Events

	ccd 0	ccd 1	ccd 2	ccd 3	ccd 6	ccd 7
level 1 events	185269	187769	181676	183917	206362	476233
rejected events	20643	20696	21676	21779	22941	38392
rejected %	11%	11%	11%	11%	11%	8%

	ccd 0	ccd 1	ccd 2	ccd 3	ccd 6	ccd 7
grade 0 events	90617	92099	89066	90889	100160	112378
	48%	49%	49%	49%	48%	23%
grade 1 events	434	445	476	474	495	269
	0%	0%	0%	0%	0%	0%
grade 2 events	29208	29470	28173	28402	31816	97254
	15%	15%	15%	15%	15%	20%
grade 3 events	10496	10825	10107	10198	11359	44536
	5%	5%	5%	5%	5%	9%
grade 4 events	10363	10554	10189	10346	11337	44524
	5%	5%	5%	5%	5%	9%
grade 5 events	1505	1510	1362	1516	1710	7883
	0%	0%	0%	0%	0%	1%
grade 6 events	24131	24329	22657	22477	28940	139371
	13%	12%	12%	12%	14%	29%
grade 7 events	18515	18537	19646	19615	20545	30018
	9%	9%	10%	10%	9%	6%

2.2 Compared Parameters

Parameter	Planned	Actual	Parameter	Planned	Actual
Instrument	ACIS	ACIS	Obspar format version number	6	6
Detector	ACIS-012367	ACIS-012367	Obspar file type	PREDICTED	ACTUAL
Grating	NONE	NONE	Obspar update status	NONE	UPDATED
Data mode	FAINT	FAINT	On-chip summing requested	N	N
Observation mode	SECONDARY	SECONDARY	Subarray requested	NONE	NONE
Pointing RA	0	140.9831226950657	Alternating exposures requested	N	N
Pointing Dec	0	60.02734816288975	Primary exposure time	0.000000	3.2
Pointing Roll	0.0	74.32108840753634			
SIM focus pos (mm)	-0.782348	-0.6828225247311905			
SIM defocus (mm)	0	0.8505141146731063			
SIM translation stage pos (mm)	-233.592463	250.4635187648994			
SIM translation stage offset (mm)	0	-0.007540371344731511			
Observation start time	121077847.687	121077846.91821			
Observation start date	2001-11-02T08:44:08	2001-11-02T08:44:06			
Observation end time	121109958.888	121109958.11948			
Observation end date	2001-11-02T17:39:19	2001-11-02T17:39:18			
Read mode	TIMED	TIMED			

2.3 Star Slots

2.4 FID Slots

A Summary

A.1 Status

V&V Scientist	Doug Morgan
V&V Date (YYYY-MM-DD)	2007.01.14
V&V Edition	1
V&V Disposition and Status	OK
V&V Charge Time	7.27258116

A.2 Comments