

V&V Reference Report

L2 ASCDS Version : 8.4.5

Observation 61407 - L2 Version 3
Chandra X-Ray Center

L2 Processing Date : Sep 27 2012

Contents

1	Front	2
2	OBI	3
2.1	OBI	3
2.1.1	Images	3
2.1.2	Bias	3
2.1.3	Parameters	4
2.1.4	Events	4
2.2	Compared Parameters	5
2.3	Star Slots	6
2.4	FID Slots	6
A	Summary	7
A.1	Status	7
A.2	Comments	7

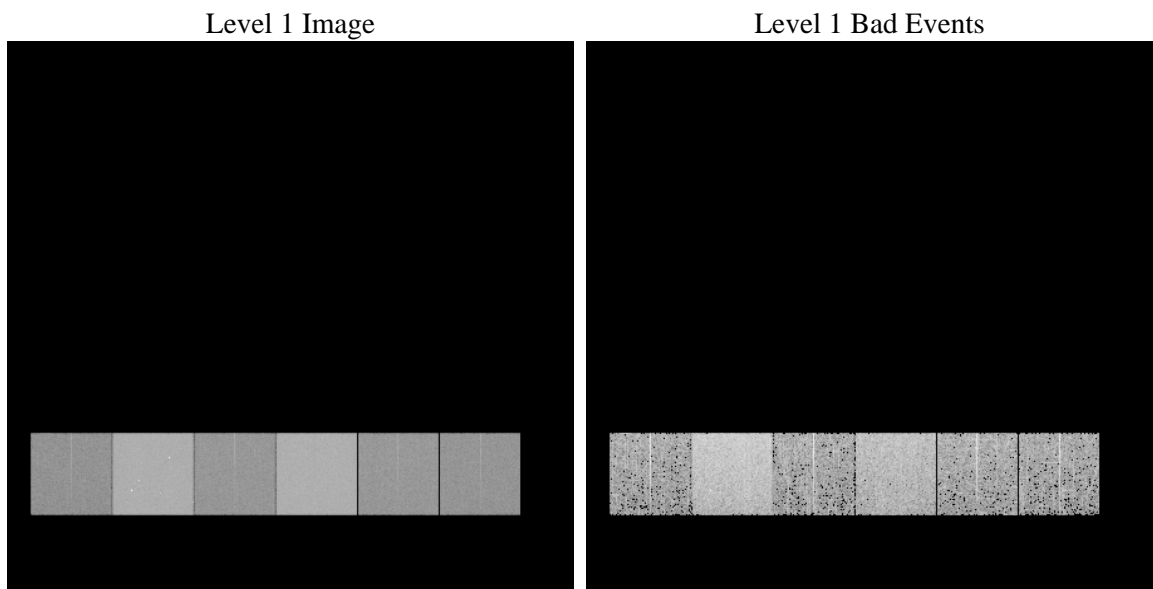
1 Front

seq_num	 	Sequence number
obs_id	61407	Observation id
title	ACIS-456789 diagnostics	Proposal title
observer	CHANDRA engineering request/realtime commanding	Principal investig
object	 	Source name
dtcycle	0	
cycle	P	events from which exps? Prim/Second/Both
ra_targ	0.0	Observer's specified target RA [deg]
dec_targ	0.0	Observer's specified target Dec [deg]
ra_nom	332.02238128626	Nominal RA [deg]
dec_nom	-21.019563459658	Nominal Dec [deg]
roll_nom	284.08404210666	Nominal Roll [deg]
revision	3	Processing version of data
ontime	6060.4642901123	Sum of GTIs [s]
livetime	5983.7230420974	Livetime [s]
ontime4	2271.7450853139	Sum of GTIs [s]
ontime5	6497.9936551452	Sum of GTIs [s]
ontime6	2485.6535651982	Sum of GTIs [s]
ontime7	6060.4642901123	Sum of GTIs [s]
ontime8	2563.3787540942	Sum of GTIs [s]
ontime9	2401.1217239052	Sum of GTIs [s]
l2events	1211117	Number of level 2 events

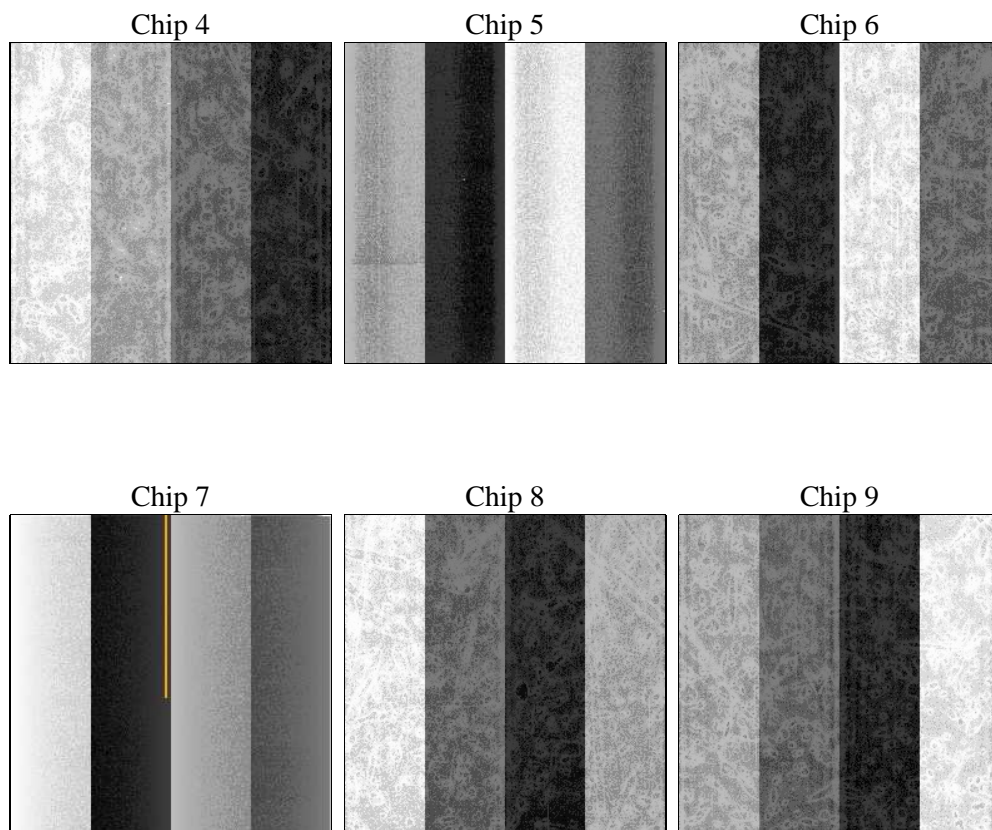
2 OBI

2.1 OBI

2.1.1 Images



2.1.2 Bias



2.1.3 Parameters

obi_num	1	Obi number	sched_exp_time	0.0	[s] Scheduled observation exposure time
ascdsver	8.4.5	Processing system revision	ontime	6060.4642901123	Sum of GTIs [s]
caldsver	4.5.1.1	 	ontime4	2271.7450853139	Sum of GTIs [s]
date	2012-09-27T07:56:35	Date and time of file creation	ontime5	6497.9936551452	Sum of GTIs [s]
revision	3	Processing version of data	ontime6	2485.6535651982	Sum of GTIs [s]
			ontime7	6060.4642901123	Sum of GTIs [s]
			ontime8	2563.3787540942	Sum of GTIs [s]
			ontime9	2401.1217239052	Sum of GTIs [s]
			l1events	1422353	Number of level 1 events

2.1.4 Events

	ccd 4	ccd 5	ccd 6	ccd 7	ccd 8	ccd 9		ccd 4	ccd 5	ccd 6	ccd 7	ccd 8	ccd 9
level 1 events	144389	385596	169337	392169	174545	156317	grade 0 events	70677	87605	81934	92084	84804	75504
rejected events	19240	45205	19908	32479	20834	18998		48%	22%	48%	23%	48%	48%
rejected %	13%	11%	11%	8%	11%	12%	grade 1 events	383	322	434	230	415	400
								0%	0%	0%	0%	0%	0%
							grade 2 events	22276	117361	25805	80023	26758	24146
								15%	30%	15%	20%	15%	15%
							grade 3 events	7719	22767	9296	36675	9848	8495
								5%	5%	5%	9%	5%	5%
							grade 4 events	7725	22577	9245	36042	9873	8563
								5%	5%	5%	9%	5%	5%
							grade 5 events	1249	8563	1491	6774	1606	1454
								0%	2%	0%	1%	0%	0%
							grade 6 events	16923	90245	23343	115030	22428	20611
								11%	23%	13%	29%	12%	13%
							grade 7 events	17437	36156	17789	25311	18813	17144
								12%	9%	10%	6%	10%	10%

2.2 Compared Parameters

Parameter	Planned	Actual	Parameter	Planned	Actual
Instrument	ACIS	ACIS	Obspar format version number	7	7
Detector	ACIS-456789	ACIS-456789	Obspar file type	PREDICTED	ACTUAL
Grating	NONE	NONE	Obspar update status	NONE	UPDATED
Data mode	FAINT	FAINT	On-chip summing requested	N	N
Observation mode	SECONDARY	SECONDARY	Subarray requested	NONE	NONE
[deg] Pointing RA	0	332.0223812862557	Alternating exposures requested	N	N
[deg] Pointing Dec	0	-21.01956345965764	[s] Primary exposure time	3.2	3.2
[deg] Pointing Roll	0.0	284.0840421066623			
[mm] SIM focus pos	-0.684267	-0.6828225247311905			
[mm] SIM defocus	0	0.8505141146731063			
[mm] SIM translation stage pos	-190.132523	250.466033080201			
[mm] SIM translation stage offset	0	-0.01005468664627074			
[s] Observation start time (MET)	122447848.391358	122447847.62286			
Observation start date	2001-11-18T05:17:28	2001-11-18T05:17:27			
[s] Observation end time (MET)	122475014.992449	122475014.22395			
Observation end date	2001-11-18T12:50:15	2001-11-18T12:50:14			
Read mode	TIMED	TIMED			

2.3 Star Slots

2.4 FID Slots

A Summary

A.1 Status

V&V Scientist	Beth Sundheim
V&V Date (YYYY-MM-DD)	2012.09.27
V&V Edition	1
V&V Disposition and Status	OK
V&V Charge Time	6.0604642901123

A.2 Comments