

V&V Reference Report

L2 ASCDS Version : 7.6.10

Observation 61401 - L2 Version 001
Chandra X-Ray Center

L2 Processing Date : Jan 21 2007

Contents

1	Front	2
2	OBI	3
2.1	OBI	3
2.1.1	Images	3
2.1.2	Bias	3
2.1.3	Parameters	4
2.1.4	Events	4
2.2	Compared Parameters	5
2.3	Star Slots	6
2.4	FID Slots	6
A	Summary	7
A.1	Status	7
A.2	Comments	7

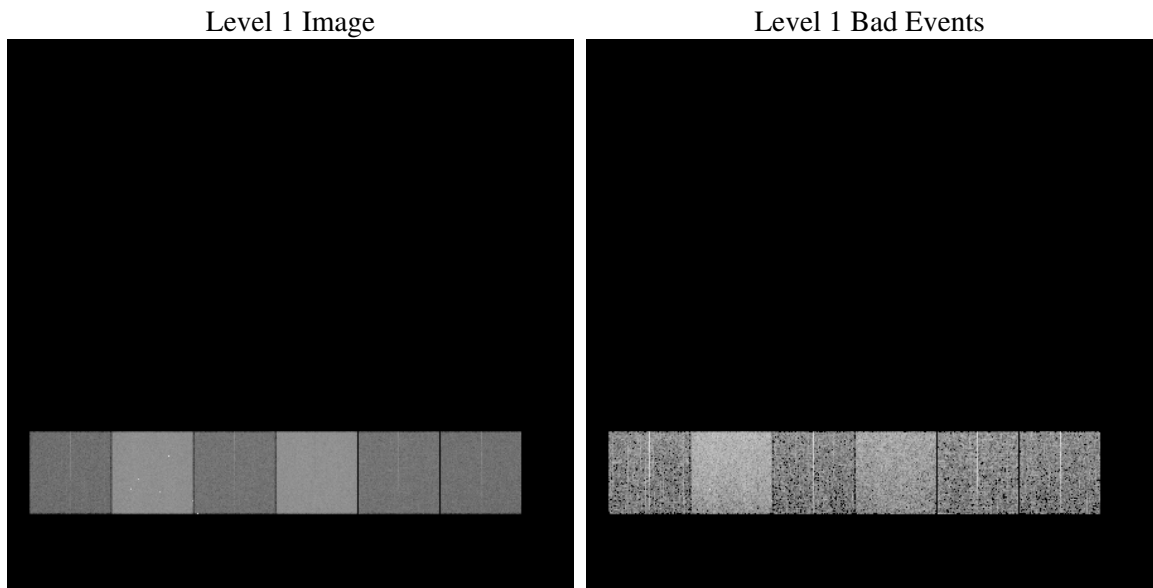
1 Front

seq_num	
obs_id	61401
title	ACIS-456789 diagnostics
observer	CHANDRA engineering request/realtime commanding
object	
dtcycle	0
cycle	P
ra_targ	0.0
dec_targ	0.0
ra_nom	109.01229174442
dec_nom	-55.972187414755
roll_nom	43.358380294091
revision	2
ontime	6033.4551385343
livetime	5957.0558966597
ontime4	2374.4948141277
ontime5	6467.7851539105
ontime6	2581.8796958029
ontime7	6033.4551385343
ontime8	2588.4436068684
ontime9	2461.8383352607
l2events	1217052

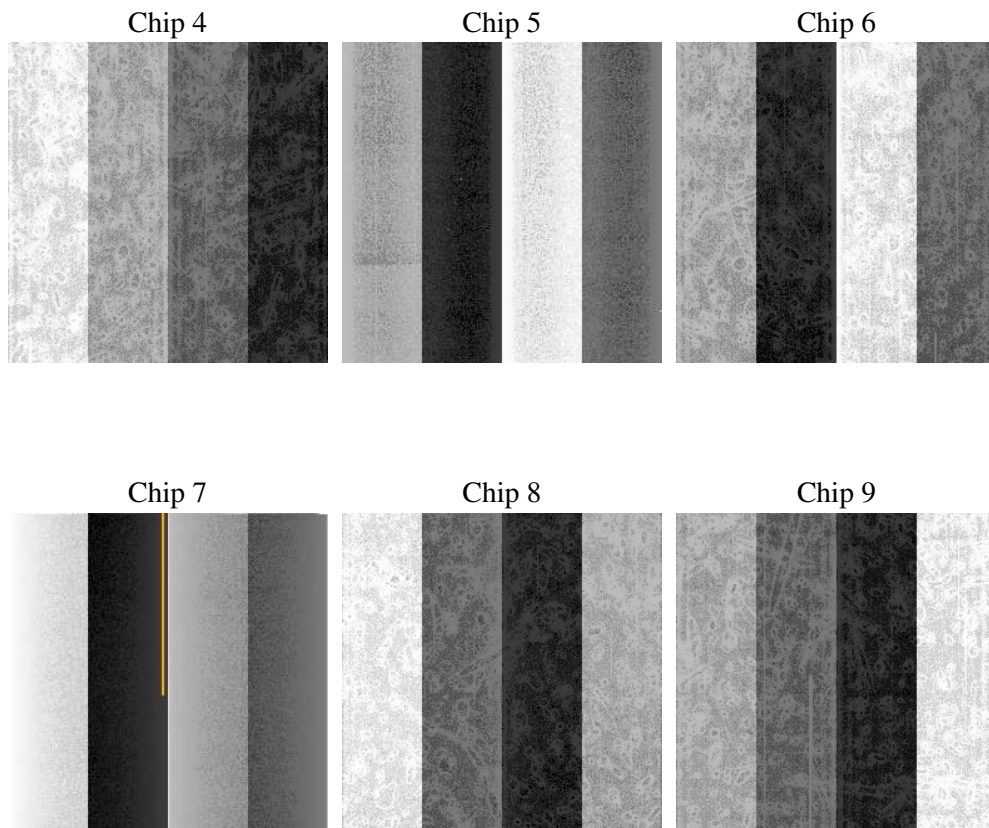
2 OBI

2.1 OBI

2.1.1 Images



2.1.2 Bias



2.1.3 Parameters

obi_num	2
ascdsver	7.6.10
caldsver	3.3.0
date	2007-01-20T15:38:45
revision	2

sched_exp_time	0.0
ontime	6033.4551385343
ontime4	2374.4948141277
ontime5	6467.7851539105
ontime6	2581.8796958029
ontime7	6033.4551385343
ontime8	2588.4436068684
ontime9	2461.8383352607
l1events	1419485

2.1.4 Events

	ccd 4	ccd 5	ccd 6	ccd 7	ccd 8	ccd 9
level 1 events	150845	376900	173095	384535	174629	159481
rejected events	19016	42174	17482	29777	20123	17728
rejected %	12%	11%	10%	7%	11%	11%

	ccd 4	ccd 5	ccd 6	ccd 7	ccd 8	ccd 9
grade 0 events	74551	85101	85473	90803	85160	77557
	49%	22%	49%	23%	48%	48%
grade 1 events	361	291	399	216	384	358
	0%	0%	0%	0%	0%	0%
grade 2 events	23121	116249	27067	79048	27305	25012
	15%	30%	15%	20%	15%	15%
grade 3 events	8045	22393	9452	36030	9621	8813
	5%	5%	5%	9%	5%	5%
grade 4 events	8263	21710	9432	35767	9833	8906
	5%	5%	5%	9%	5%	5%
grade 5 events	1244	8149	1401	6191	1486	1387
	0%	2%	0%	1%	0%	0%
grade 6 events	17849	89273	24189	113110	22587	21465
	11%	23%	13%	29%	12%	13%
grade 7 events	17411	33734	15682	23370	18253	15983
	11%	8%	9%	6%	10%	10%

2.2 Compared Parameters

Parameter	Planned	Actual	Parameter	Planned	Actual
Instrument	ACIS	ACIS	Obspar format version number	6	6
Detector	ACIS-456789	ACIS-456789	Obspar file type	PREDICTED	ACTUAL
Grating	NONE	NONE	Obspar update status	NONE	UPDATED
Data mode	FAINT	FAINT	On-chip summing requested	N	N
Observation mode	SECONDARY	SECONDARY	Subarray requested	NONE	NONE
Pointing RA	0	109.0122917444231	Alternating exposures requested	N	N
Pointing Dec	0	-55.97218741475466	Primary exposure time	0.000000	3.2
Pointing Roll	0.0	43.35838029409097			
SIM focus pos (mm)	-0.684267	-0.7809083437167272			
SIM defocus (mm)	0	0.7524282956875696			
SIM translation stage pos (mm)	-190.132523	250.466033080201			
SIM translation stage offset (mm)	0	-0.01005468664627074			
Observation start time	123132072.819	123132072.05021			
Observation start date	2001-11-26T03:21:13	2001-11-26T03:21:12			
Observation end time	123164184.02	123164183.2515			
Observation end date	2001-11-26T12:16:24	2001-11-26T12:16:23			
Read mode	TIMED	TIMED			

2.3 Star Slots

2.4 FID Slots

A Summary

A.1 Status

V&V Scientist	Beth Sundheim
V&V Date (YYYY-MM-DD)	2007.01.21
V&V Edition	1
V&V Disposition and Status	OK
V&V Charge Time	6.03345513

A.2 Comments