

V&V Reference Report

L2 ASCDS Version : 8.4.5

Observation 61396 - L2 Version 3
Chandra X-Ray Center

L2 Processing Date : Sep 28 2012

Contents

1	Front	2
2	OBI	3
2.1	OBI	3
2.1.1	Images	3
2.1.2	Bias	3
2.1.3	Parameters	4
2.1.4	Events	4
2.2	Compared Parameters	5
2.3	Star Slots	6
2.4	FID Slots	6
A	Summary	7
A.1	Status	7
A.2	Comments	7

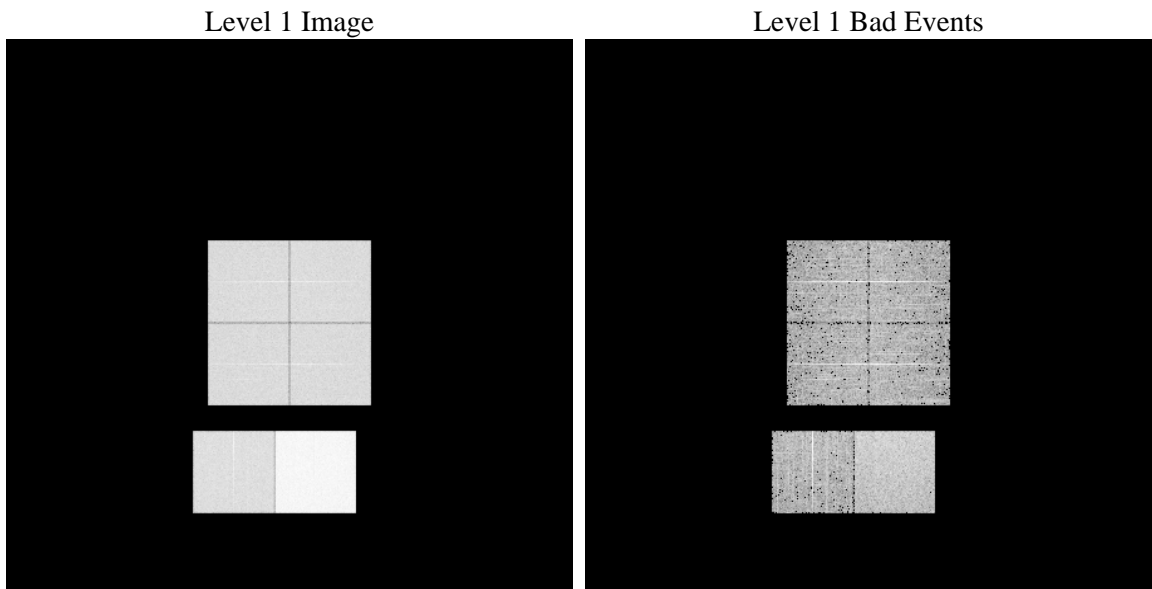
1 Front

seq_num	 	Sequence number
obs_id	61396	Observation id
title	ACIS-012367 diagnostics	Proposal title
observer	CHANDRA engineering request/realtime commanding	Principal investig
object	 	Source name
dtcycle	0	
cycle	P	events from which exps? Prim/Second/Both
ra_targ	0.0	Observer's specified target RA [deg]
dec_targ	0.0	Observer's specified target Dec [deg]
ra_nom	258.79121484715	Nominal RA [deg]
dec_nom	38.029532318112	Nominal Dec [deg]
roll_nom	349.49074233882	Nominal Roll [deg]
revision	3	Processing version of data
ontime	8102.4991669059	Sum of GTIs [s]
livetime	7999.9004437152	Livetime [s]
ontime0	3144.3548369557	Sum of GTIs [s]
ontime1	3202.651779294	Sum of GTIs [s]
ontime2	3033.609893918	Sum of GTIs [s]
ontime3	3043.332754463	Sum of GTIs [s]
ontime6	3354.8978213221	Sum of GTIs [s]
ontime7	8102.4991669059	Sum of GTIs [s]
l2events	1322005	Number of level 2 events

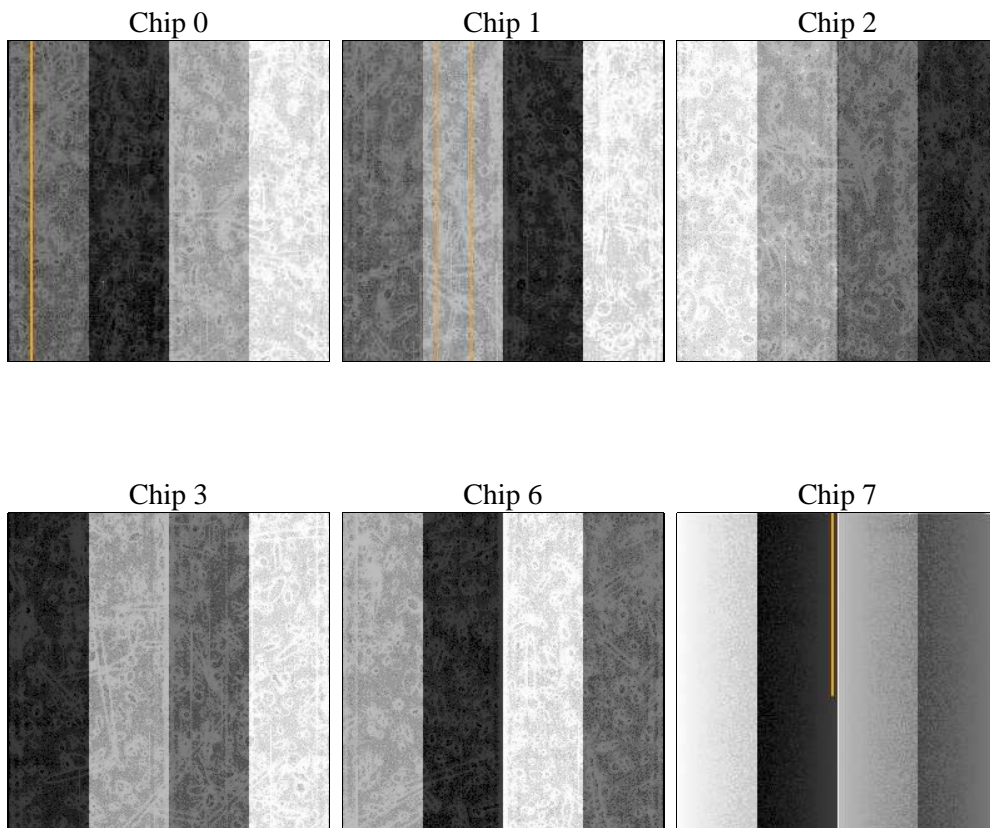
2 OBI

2.1 OBI

2.1.1 Images



2.1.2 Bias



2.1.3 Parameters

obi_num	1	Obi number	sched_exp_time	0.0	[s] Scheduled observation exposure time
ascdsver	8.4.5	Processing system revision	ontime	8102.4991669059	Sum of GTIs [s]
caldsver	4.5.2	 	ontime0	3144.3548369557	Sum of GTIs [s]
date	2012-09-28T10:48:05	Date and time of file creation	ontime1	3202.651779294	Sum of GTIs [s]
revision	3	Processing version of data	ontime2	3033.609893918	Sum of GTIs [s]
			ontime3	3043.332754463	Sum of GTIs [s]
			ontime6	3354.8978213221	Sum of GTIs [s]
			ontime7	8102.4991669059	Sum of GTIs [s]
			l1events	1538345	Number of level 1 events

2.1.4 Events

	ccd 0	ccd 1	ccd 2	ccd 3	ccd 6	ccd 7		ccd 0	ccd 1	ccd 2	ccd 3	ccd 6	ccd 7
level 1 events	200309	203291	196071	196519	223708	518447	grade 0 events	97888	99432	96203	96808	107833	120602
rejected events	22771	23233	22907	23542	25737	42817		48%	48%	49%	49%	48%	23%
rejected %	11%	11%	11%	11%	11%	8%	grade 1 events	516	486	458	540	541	296
								0%	0%	0%	0%	0%	0%
							grade 2 events	31269	31718	30519	30118	34305	105403
								15%	15%	15%	15%	15%	20%
							grade 3 events	11334	11507	10912	11034	12216	48349
								5%	5%	5%	5%	5%	9%
							grade 4 events	11288	11315	10838	10996	12213	47968
								5%	5%	5%	5%	5%	9%
							grade 5 events	1704	1711	1562	1628	1973	8954
								0%	0%	0%	0%	0%	1%
							grade 6 events	25955	26223	24692	24021	31602	153308
								12%	12%	12%	12%	14%	29%
							grade 7 events	20355	20899	20887	21374	23025	33567
								10%	10%	10%	10%	10%	6%

2.2 Compared Parameters

Parameter	Planned	Actual	Parameter	Planned	Actual
Instrument	ACIS	ACIS	Obspar format version number	7	7
Detector	ACIS-012367	ACIS-012367	Obspar file type	PREDICTED	ACTUAL
Grating	NONE	NONE	Obspar update status	NONE	UPDATED
Data mode	FAINT	FAINT	On-chip summing requested	N	N
Observation mode	SECONDARY	SECONDARY	Subarray requested	NONE	NONE
[deg] Pointing RA	0	258.7912148471511	Alternating exposures requested	N	N
[deg] Pointing Dec	0	38.02953231811245	[s] Primary exposure time	0.000000	3.2
[deg] Pointing Roll	0.0	349.4907423388245			
[mm] SIM focus pos	-0.782348	-0.7809083437167272			
[mm] SIM defocus	0	0.7524282956875696			
[mm] SIM translation stage pos	-233.592463	250.466033080201			
[mm] SIM translation stage offset	0	-0.01005468664627074			
[s] Observation start time (MET)	123625382.788	123625382.01996			
Observation start date	2001-12-01T20:23:03	2001-12-01T20:23:02			
[s] Observation end time (MET)	123842945.197	123842944.42867			
Observation end date	2001-12-04T08:49:05	2001-12-04T08:49:04			
Read mode	TIMED	TIMED			

2.3 Star Slots

2.4 FID Slots

A Summary

A.1 Status

V&V Scientist	Beth Sundheim
V&V Date (YYYY-MM-DD)	2012.10.01
V&V Edition	1
V&V Disposition and Status	OK
V&V Charge Time	8.1024991669059

A.2 Comments