

V&V Reference Report

L2 ASCDS Version : 7.6.10

Observation 61392 - L2 Version 001
Chandra X-Ray Center

L2 Processing Date : Jan 21 2007

Contents

1	Front	2
2	OBI	3
2.1	OBI	3
2.1.1	Images	3
2.1.2	Bias	3
2.1.3	Parameters	4
2.1.4	Events	4
2.2	Compared Parameters	5
2.3	Star Slots	6
2.4	FID Slots	6
A	Summary	7
A.1	Status	7
A.2	Comments	7

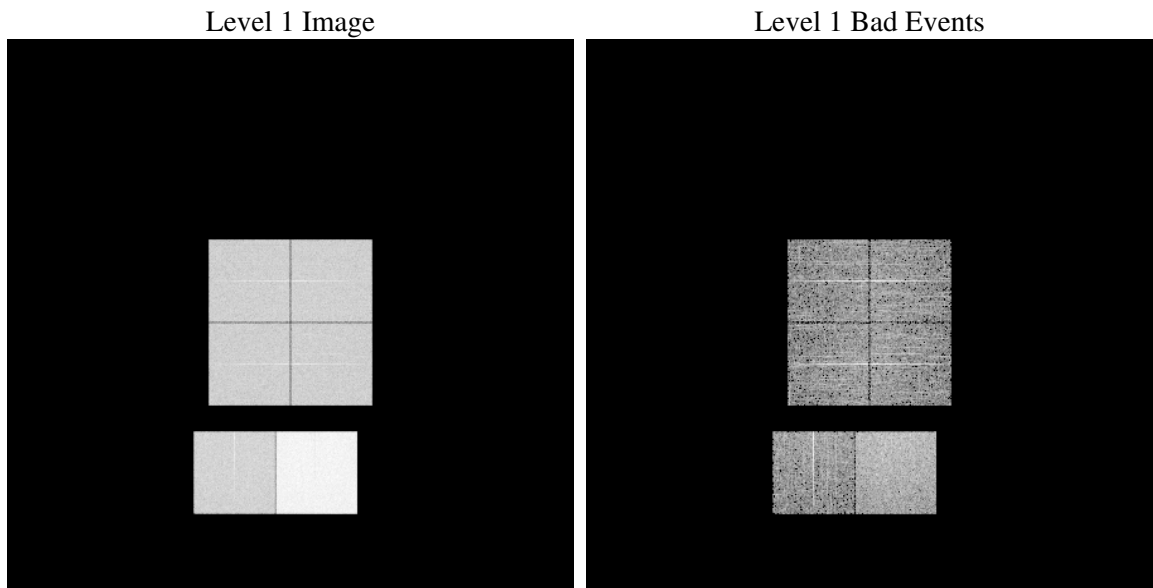
1 Front

seq_num	
obs_id	61392
title	ACIS-012367 diagnostics
observer	CHANDRA engineering request/realtime commanding
object	
dtcycle	0
cycle	P
ra_targ	0.0
dec_targ	0.0
ra_nom	75.023532186331
dec_nom	-5.9834726068552
roll_nom	2.4254411933084
revision	2
ontime	8129.1108143181
livetime	8026.1751184243
ontime0	3168.565253973
ontime1	3207.499292165
ontime2	3086.1444408447
ontime3	3092.6266604811
ontime6	3363.1495180726
ontime7	8129.1108143181
l2events	1329911

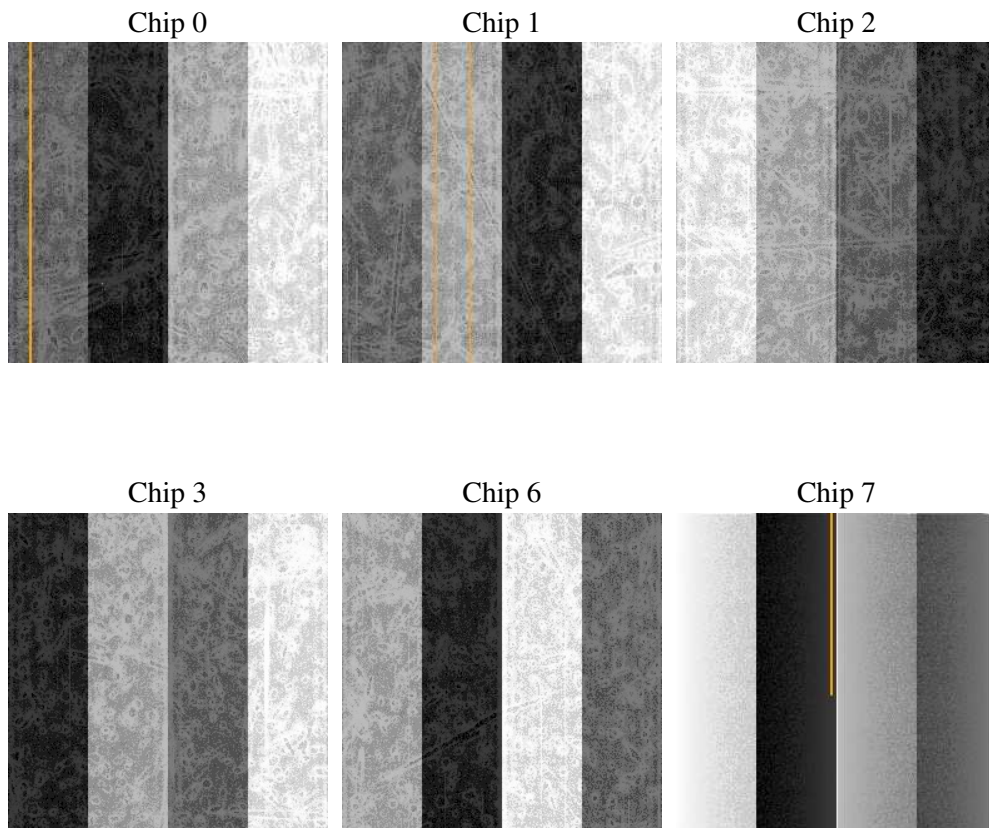
2 OBI

2.1 OBI

2.1.1 Images



2.1.2 Bias



2.1.3 Parameters

obi_num	1
ascdsver	7.6.10
caldsver	3.3.0
date	2007-01-20T16:14:19
revision	2

sched_exp_time	0.0
ontime	8129.1108143181
ontime0	3168.565253973
ontime1	3207.499292165
ontime2	3086.1444408447
ontime3	3092.6266604811
ontime6	3363.1495180726
ontime7	8129.1108143181
l1events	1542685

2.1.4 Events

	ccd 0	ccd 1	ccd 2	ccd 3	ccd 6	ccd 7
level 1 events	200243	203189	198826	199672	223595	517160
rejected events	21788	23159	23009	23336	24553	41420
rejected %	10%	11%	11%	11%	10%	8%

	ccd 0	ccd 1	ccd 2	ccd 3	ccd 6	ccd 7
grade 0 events	98270	99147	97772	98861	108178	121228
	49%	48%	49%	49%	48%	23%
grade 1 events	520	499	503	504	551	302
	0%	0%	0%	0%	0%	0%
grade 2 events	31383	31869	30842	30520	34408	104917
	15%	15%	15%	15%	15%	20%
grade 3 events	11268	11368	10955	11314	12317	48821
	5%	5%	5%	5%	5%	9%
grade 4 events	11265	11545	11098	11042	12477	48429
	5%	5%	5%	5%	5%	9%
grade 5 events	1578	1732	1559	1678	1874	8676
	0%	0%	0%	0%	0%	1%
grade 6 events	26269	26101	25150	24599	31662	152345
	13%	12%	12%	12%	14%	29%
grade 7 events	19690	20928	20947	21154	22128	32442
	9%	10%	10%	10%	9%	6%

2.2 Compared Parameters

Parameter	Planned	Actual	Parameter	Planned	Actual
Instrument	ACIS	ACIS	Obspar format version number	6	6
Detector	ACIS-012367	ACIS-012367	Obspar file type	PREDICTED	ACTUAL
Grating	NONE	NONE	Obspar update status	NONE	UPDATED
Data mode	FAINT	FAINT	On-chip summing requested	N	N
Observation mode	SECONDARY	SECONDARY	Subarray requested	NONE	NONE
Pointing RA	0	75.02353218633137	Alternating exposures requested	N	N
Pointing Dec	0	-5.983472606855159	Primary exposure time	0.000000	3.2
Pointing Roll	0.0	2.425441193308354			
SIM focus pos (mm)	-0.782348	-0.6828225247311905			
SIM defocus (mm)	0	0.8505141146731063			
SIM translation stage pos (mm)	-233.592463	250.466033080201			
SIM translation stage offset (mm)	0	-0.01005468664627074			
Observation start time	124079500.857	124079500.08814			
Observation start date	2001-12-07T02:31:41	2001-12-07T02:31:40			
Observation end time	124102007.808	124102007.03904			
Observation end date	2001-12-07T08:46:48	2001-12-07T08:46:47			
Read mode	TIMED	TIMED			

2.3 Star Slots

2.4 FID Slots

A Summary

A.1 Status

V&V Scientist	Beth Sundheim
V&V Date (YYYY-MM-DD)	2007.01.21
V&V Edition	1
V&V Disposition and Status	OK
V&V Charge Time	8.12911081

A.2 Comments