

V&V Reference Report

L2 ASCDS Version : 8.4.5

Observation 61387 - L2 Version 3
Chandra X-Ray Center

L2 Processing Date : Sep 29 2012

Contents

1	Front	2
2	OBI	3
2.1	OBI	3
2.1.1	Images	3
2.1.2	Bias	3
2.1.3	Parameters	4
2.1.4	Events	4
2.2	Compared Parameters	5
2.3	Star Slots	6
2.4	FID Slots	6
A	Summary	7
A.1	Status	7
A.2	Comments	7

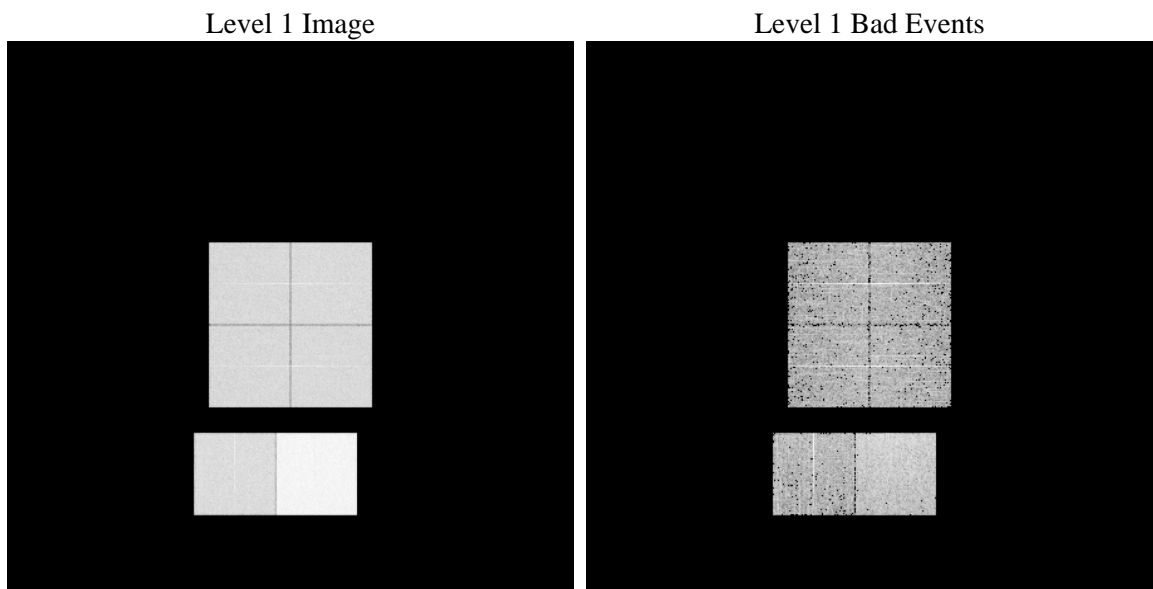
1 Front

seq_num	 	Sequence number
obs_id	61387	Observation id
title	ACIS-012367 diagnostics	Proposal title
observer	CHANDRA engineering request/realtime commanding	Principal investig
object	 	Source name
dtcycle	0	
cycle	P	events from which exps? Prim/Second/Both
ra_targ	0.0	Observer's specified target RA [deg]
dec_targ	0.0	Observer's specified target Dec [deg]
ra_nom	334.02864040254	Nominal RA [deg]
dec_nom	-56.023715841238	Nominal Dec [deg]
roll_nom	271.42462567738	Nominal Roll [deg]
revision	3	Processing version of data
ontime	7540.2385173291	Sum of GTIs [s]
livetime	7444.7594770361	Livetime [s]
ontime0	2852.1116941571	Sum of GTIs [s]
ontime1	3007.6799292266	Sum of GTIs [s]
ontime2	2790.5323728025	Sum of GTIs [s]
ontime3	2871.5580836982	Sum of GTIs [s]
ontime6	3098.4295075089	Sum of GTIs [s]
ontime7	7540.2385173291	Sum of GTIs [s]
l2events	1220348	Number of level 2 events

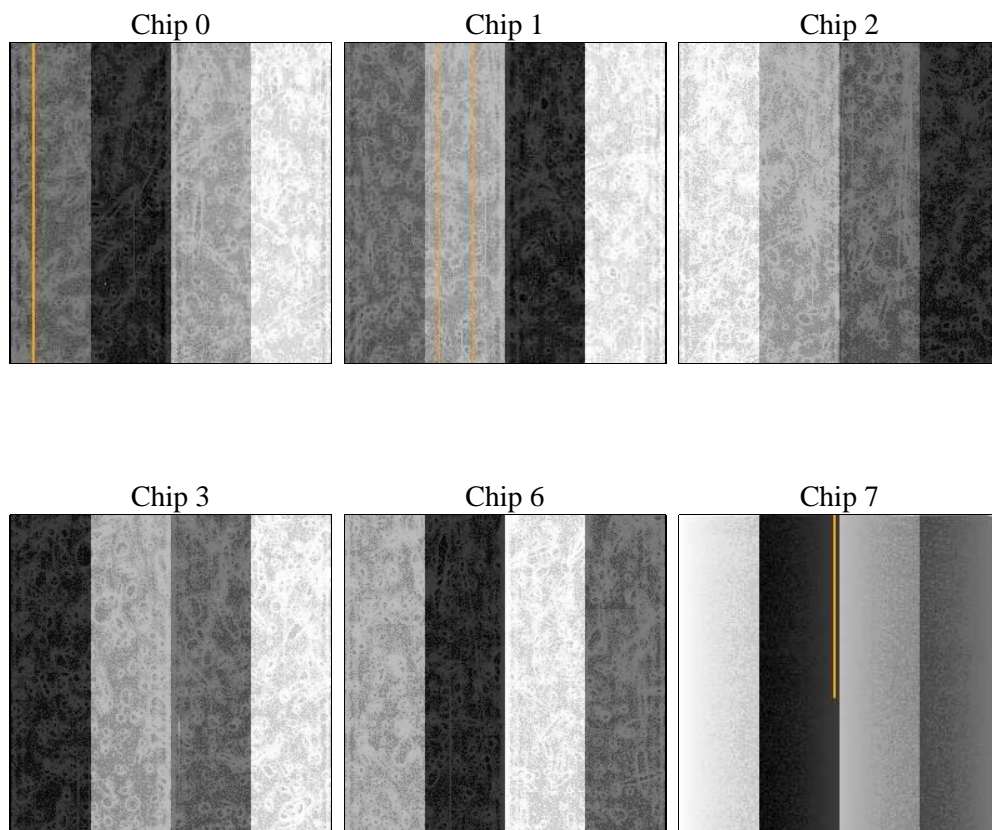
2 OBI

2.1 OBI

2.1.1 Images



2.1.2 Bias



2.1.3 Parameters

obi_num	0	Obi number	sched_exp_time	0.0	[s] Scheduled observation exposure time
ascdsver	8.4.5	Processing system revision	ontime	7540.2385173291	Sum of GTIs [s]
caldsver	4.5.2	 	ontime0	2852.1116941571	Sum of GTIs [s]
date	2012-09-29T04:18:09	Date and time of file creation	ontime1	3007.6799292266	Sum of GTIs [s]
revision	3	Processing version of data	ontime2	2790.5323728025	Sum of GTIs [s]
			ontime3	2871.5580836982	Sum of GTIs [s]
			ontime6	3098.4295075089	Sum of GTIs [s]
			ontime7	7540.2385173291	Sum of GTIs [s]
			l1events	1421538	Number of level 1 events

2.1.4 Events

	ccd 0	ccd 1	ccd 2	ccd 3	ccd 6	ccd 7		ccd 0	ccd 1	ccd 2	ccd 3	ccd 6	ccd 7
level 1 events	179903	189181	179405	184492	205515	483042	grade 0 events	87531	92689	87925	90535	98784	112824
rejected events	20858	20762	21344	22222	24128	40994		48%	48%	49%	49%	48%	23%
rejected %	11%	10%	11%	12%	11%	8%	grade 1 events	459	472	443	462	514	310
								0%	0%	0%	0%	0%	0%
							grade 2 events	28424	29561	27813	28566	31498	98270
								15%	15%	15%	15%	15%	20%
							grade 3 events	10192	10856	10152	10314	11206	45028
								5%	5%	5%	5%	5%	9%
							grade 4 events	9944	10742	9753	10289	11270	44885
								5%	5%	5%	5%	5%	9%
							grade 5 events	1499	1537	1428	1655	1826	8323
								0%	0%	0%	0%	0%	1%
							grade 6 events	22954	24571	22418	22566	28629	141041
								12%	12%	12%	12%	13%	29%
							grade 7 events	18900	18753	19473	20105	21788	32361
								10%	9%	10%	10%	10%	6%

2.2 Compared Parameters

Parameter	Planned	Actual	Parameter	Planned	Actual
Instrument	ACIS	ACIS	Obspar format version number	7	7
Detector	ACIS-012367	ACIS-012367	Obspar file type	PREDICTED	ACTUAL
Grating	NONE	NONE	Obspar update status	NONE	UPDATED
Data mode	FAINT	FAINT	On-chip summing requested	N	N
Observation mode	SECONDARY	SECONDARY	Subarray requested	NONE	NONE
[deg] Pointing RA	0	334.0286404025406	Alternating exposures requested	N	N
[deg] Pointing Dec	0	-56.02371584123831	[s] Primary exposure time	0.000000	3.2
[deg] Pointing Roll	0.0	271.4246256773791			
[mm] SIM focus pos	-0.782348	-0.6828225247311905			
[mm] SIM defocus	0	0.8505141146731063			
[mm] SIM translation stage pos	-233.592463	250.466033080201			
[mm] SIM translation stage offset	0	-0.01005468664627074			
[s] Observation start time (MET)	124501489.273	124501488.50503			
Observation start date	2001-12-11T23:44:49	2001-12-11T23:44:48			
[s] Observation end time (MET)	124534559.875	124534559.10635			
Observation end date	2001-12-12T08:56:00	2001-12-12T08:55:59			
Read mode	TIMED	TIMED			

2.3 Star Slots

2.4 FID Slots

A Summary

A.1 Status

V&V Scientist	Beth Sundheim
V&V Date (YYYY-MM-DD)	2012.10.01
V&V Edition	1
V&V Disposition and Status	OK
V&V Charge Time	7.5402385173291

A.2 Comments