

V&V Reference Report

L2 ASCDS Version : 7.6.10

Observation 61384 - L2 Version 001
Chandra X-Ray Center

L2 Processing Date : Jan 18 2007

Contents

1	Front	2
2	OBI	3
2.1	OBI	3
2.1.1	Images	3
2.1.2	Bias	3
2.1.3	Parameters	4
2.1.4	Events	4
2.2	Compared Parameters	5
2.3	Star Slots	6
2.4	FID Slots	6
A	Summary	7
A.1	Status	7
A.2	Comments	7

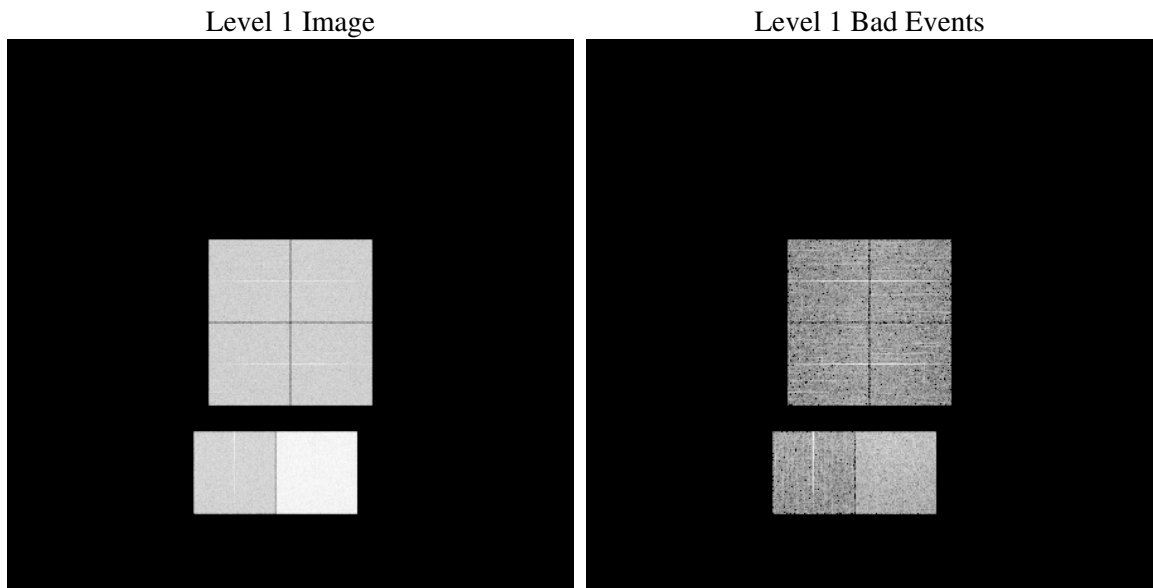
1 Front

seq_num	
obs_id	61384
title	ACIS-012367 diagnostics
observer	CHANDRA engineering request/realtime commanding
object	
dtcycle	0
cycle	P
ra_targ	0.0
dec_targ	0.0
ra_nom	142.96451802341
dec_nom	56.020666233384
roll_nom	101.02736432526
revision	2
ontime	8117.3759409338
livetime	8014.5888390727
ontime0	3096.4920647293
ontime1	3148.3898839653
ontime2	2999.3436426073
ontime3	3057.5179932117
ontime6	3281.3539361209
ontime7	8117.3759409338
l2events	1305587

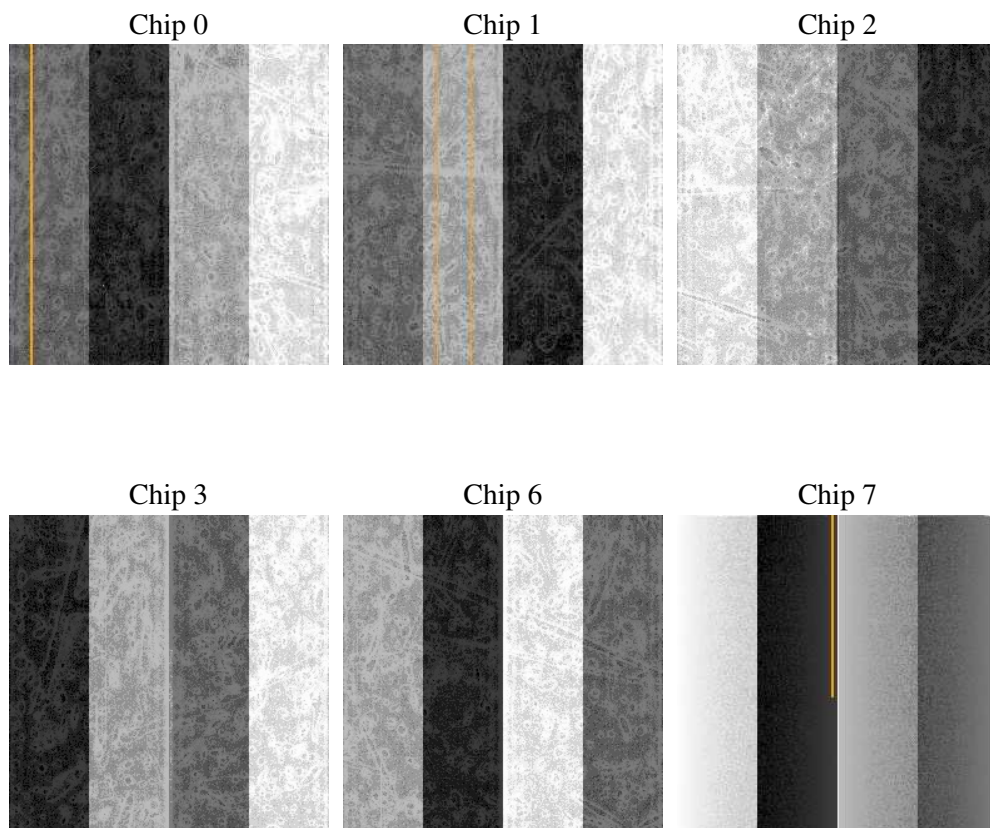
2 OBI

2.1 OBI

2.1.1 Images



2.1.2 Bias



2.1.3 Parameters

obi_num	0
ascdsver	7.6.10
caldbver	3.3.0
date	2007-01-18T09:56:02
revision	2

sched_exp_time	0.0
ontime	8117.3759409338
ontime0	3096.4920647293
ontime1	3148.3898839653
ontime2	2999.3436426073
ontime3	3057.5179932117
ontime6	3281.3539361209
ontime7	8117.3759409338
l1events	1542955

2.1.4 Events

	ccd 0	ccd 1	ccd 2	ccd 3	ccd 6	ccd 7
level 1 events	197789	202458	195573	198853	222574	525708
rejected events	24766	26231	25957	25501	29228	50891
rejected %	12%	12%	13%	12%	13%	9%

	ccd 0	ccd 1	ccd 2	ccd 3	ccd 6	ccd 7
grade 0 events	96026	98155	95212	97692	106986	122018
	48%	48%	48%	49%	48%	23%
grade 1 events	523	485	516	540	536	327
	0%	0%	0%	0%	0%	0%
grade 2 events	30822	31647	30340	31040	33764	105618
	15%	15%	15%	15%	15%	20%
grade 3 events	11022	11282	10788	11154	12179	48453
	5%	5%	5%	5%	5%	9%
grade 4 events	11248	11503	10652	11031	12113	48496
	5%	5%	5%	5%	5%	9%
grade 5 events	1610	1699	1566	1712	1916	9290
	0%	0%	0%	0%	0%	1%
grade 6 events	25968	25788	24637	24242	31147	155818
	13%	12%	12%	12%	13%	29%
grade 7 events	20570	21899	21862	21442	23933	35688
	10%	10%	11%	10%	10%	6%

2.2 Compared Parameters

Parameter	Planned	Actual	Parameter	Planned	Actual
Instrument	ACIS	ACIS	Obspar format version number	6	6
Detector	ACIS-012367	ACIS-012367	Obspar file type	PREDICTED	ACTUAL
Grating	NONE	NONE	Obspar update status	NONE	UPDATED
Data mode	FAINT	FAINT	On-chip summing requested	N	N
Observation mode	SECONDARY	SECONDARY	Subarray requested	NONE	NONE
Pointing RA	0	142.9645180234135	Alternating exposures requested	N	N
Pointing Dec	0	56.02066623338384	Primary exposure time	3.2	3.2
Pointing Roll	0.0	101.0273643252557			
SIM focus pos (mm)	-0.782348	-0.6828225247311905			
SIM defocus (mm)	0	0.8505141146731063			
SIM translation stage pos (mm)	-233.592463	250.466033080201			
SIM translation stage offset (mm)	0	-0.01005468664627074			
Observation start time	124766673.184095	124766672.41565			
Observation start date	2001-12-15T01:24:33	2001-12-15T01:24:32			
Observation end time	124787982.934947	124787982.1665			
Observation end date	2001-12-15T07:19:43	2001-12-15T07:19:42			
Read mode	TIMED	TIMED			

2.3 Star Slots

2.4 FID Slots

A Summary

A.1 Status

V&V Scientist	Jen Lauer
V&V Date (YYYY-MM-DD)	2007.01.18
V&V Edition	1
V&V Disposition and Status	OK
V&V Charge Time	8.11737594

A.2 Comments