

V&V Reference Report

L2 ASCDS Version : 8.4.5

Observation 61379 - L2 Version 3
Chandra X-Ray Center

L2 Processing Date : Sep 29 2012

Contents

1	Front	2
2	OBI	3
2.1	OBI	3
2.1.1	Images	3
2.1.2	Bias	3
2.1.3	Parameters	4
2.1.4	Events	4
2.2	Compared Parameters	5
2.3	Star Slots	6
2.4	FID Slots	6
A	Summary	7
A.1	Status	7
A.2	Comments	7

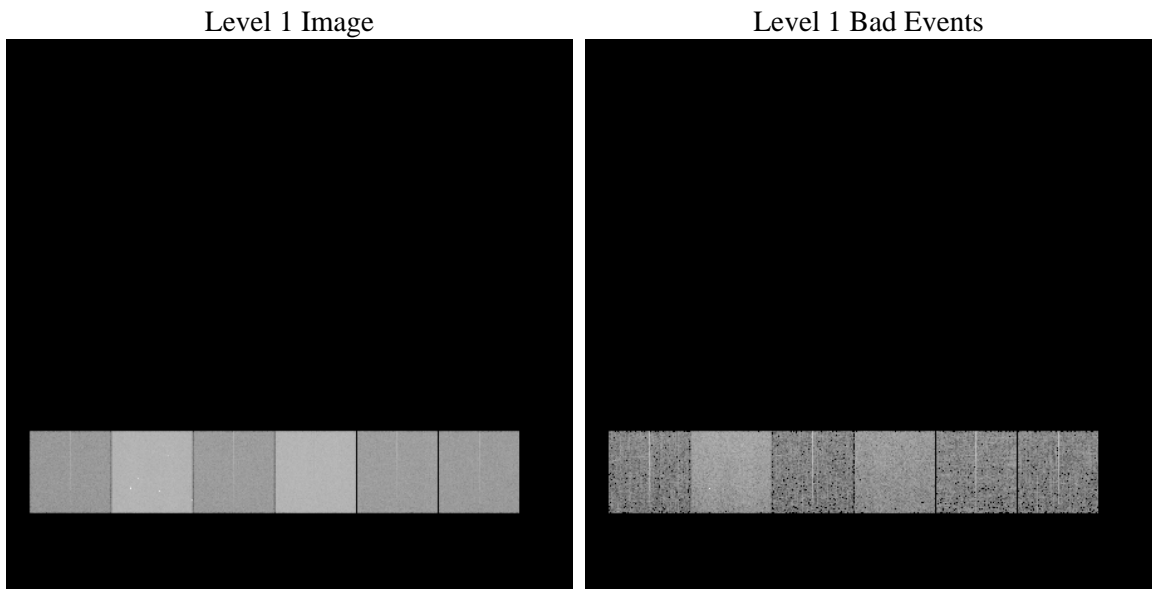
1 Front

seq_num	 	Sequence number
obs_id	61379	Observation id
title	ACIS-456789 diagnostics	Proposal title
observer	CHANDRA engineering request/realtime commanding	Principal investig
object	 	Source name
dtcycle	0	
cycle	P	events from which exps? Prim/Second/Both
ra_targ	0.0	Observer's specified target RA [deg]
dec_targ	0.0	Observer's specified target Dec [deg]
ra_nom	352.02499305518	Nominal RA [deg]
dec_nom	17.984038611006	Nominal Dec [deg]
roll_nom	293.34391162855	Nominal Roll [deg]
revision	3	Processing version of data
ontime	6722.1676146239	Sum of GTIs [s]
livetime	6637.0474806841	Livetime [s]
ontime4	2511.803561464	Sum of GTIs [s]
ontime5	7192.0653237104	Sum of GTIs [s]
ontime6	2722.4707622528	Sum of GTIs [s]
ontime7	6722.1676146239	Sum of GTIs [s]
ontime8	2797.1670219898	Sum of GTIs [s]
ontime9	2686.819651261	Sum of GTIs [s]
l2events	1306748	Number of level 2 events

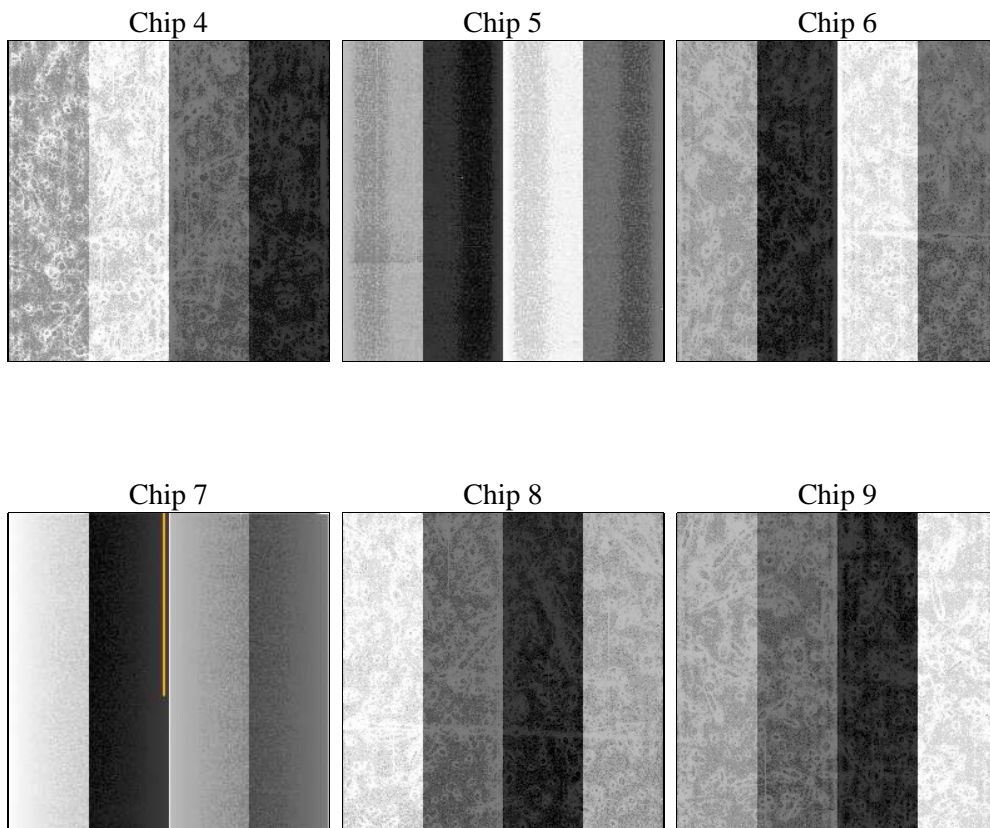
2 OBI

2.1 OBI

2.1.1 Images



2.1.2 Bias



2.1.3 Parameters

obi_num	0	Obi number	sched_exp_time	0.0	[s] Scheduled observation exposure time
ascdsver	8.4.5	Processing system revision	ontime	6722.1676146239	Sum of GTIs [s]
caldsver	4.5.2	 	ontime4	2511.803561464	Sum of GTIs [s]
date	2012-09-29T11:16:58	Date and time of file creation	ontime5	7192.0653237104	Sum of GTIs [s]
revision	3	Processing version of data	ontime6	2722.4707622528	Sum of GTIs [s]
			ontime7	6722.1676146239	Sum of GTIs [s]
			ontime8	2797.1670219898	Sum of GTIs [s]
			ontime9	2686.819651261	Sum of GTIs [s]
			l1events	1544993	Number of level 1 events

2.1.4 Events

	ccd 4	ccd 5	ccd 6	ccd 7	ccd 8	ccd 9		ccd 4	ccd 5	ccd 6	ccd 7	ccd 8	ccd 9
level 1 events	157838	417171	180515	427740	188600	173129	grade 0 events	77596	87255	87378	99229	90994	83688
rejected events	21968	53353	21506	37872	24409	21430		49%	20%	48%	23%	48%	48%
rejected %	13%	12%	11%	8%	12%	12%	grade 1 events	412	260	421	274	490	400
								0%	0%	0%	0%	0%	0%
							grade 2 events	24093	132552	27799	86482	29154	27016
								15%	31%	15%	20%	15%	15%
							grade 3 events	8277	22970	9812	39811	10574	9400
								5%	5%	5%	9%	5%	5%
							grade 4 events	8429	22788	9843	39490	10435	9491
								5%	5%	5%	9%	5%	5%
							grade 5 events	1338	9514	1583	7091	1722	1576
								0%	2%	0%	1%	0%	0%
							grade 6 events	18553	101050	25309	127870	24397	23237
								11%	24%	14%	29%	12%	13%
							grade 7 events	19140	40782	18370	27493	20834	18321
								12%	9%	10%	6%	11%	10%

2.2 Compared Parameters

Parameter	Planned	Actual
Instrument	ACIS	ACIS
Detector	ACIS-456789	ACIS-456789
Grating	NONE	NONE
Data mode	FAINT	FAINT
Observation mode	SECONDARY	SECONDARY
[deg] Pointing RA	0	352.0249930551759
[deg] Pointing Dec	0	17.98403861100623
[deg] Pointing Roll	0.0	293.3439116285523
[mm] SIM focus pos	-0.684267	-0.7809083437167272
[mm] SIM defocus	0	0.7524282956875696
[mm] SIM translation stage pos	-190.132523	250.466033080201
[mm] SIM translation stage offset	0	-0.01005468664627074
[s] Observation start time (MET)	124995533.143	124995532.37482
Observation start date	2001-12-17T16:58:53	2001-12-17T16:58:52
[s] Observation end time (MET)	125016842.894	125016842.12567
Observation end date	2001-12-17T22:54:03	2001-12-17T22:54:02
Read mode	TIMED	TIMED

Parameter	Planned	Actual
Obspar format version number	7	7
Obspar file type	PREDICTED	ACTUAL
Obspar update status	NONE	UPDATED
On-chip summing requested	N	N
Subarray requested	NONE	NONE
Alternating exposures requested	N	N
[s] Primary exposure time	0.000000	3.2

2.3 Star Slots

2.4 FID Slots

A Summary

A.1 Status

V&V Scientist	Beth Sundheim
V&V Date (YYYY-MM-DD)	2012.10.02
V&V Edition	1
V&V Disposition and Status	OK
V&V Charge Time	6.7221676146239

A.2 Comments