

# V&V Reference Report

## L2 ASCDS Version : 8.4.5

Observation 61371 - L2 Version 3  
Chandra X-Ray Center

L2 Processing Date : Sep 29 2012

## Contents

<b>1</b>	<b>Front</b>	<b>2</b>
<b>2</b>	<b>OBI</b>	<b>3</b>
2.1	OBI . . . . .	3
2.1.1	Images . . . . .	3
2.1.2	Bias . . . . .	3
2.1.3	Parameters . . . . .	4
2.1.4	Events . . . . .	4
2.2	Compared Parameters . . . . .	5
2.3	Star Slots . . . . .	6
2.4	FID Slots . . . . .	6
<b>A</b>	<b>Summary</b>	<b>7</b>
A.1	Status . . . . .	7
A.2	Comments . . . . .	7

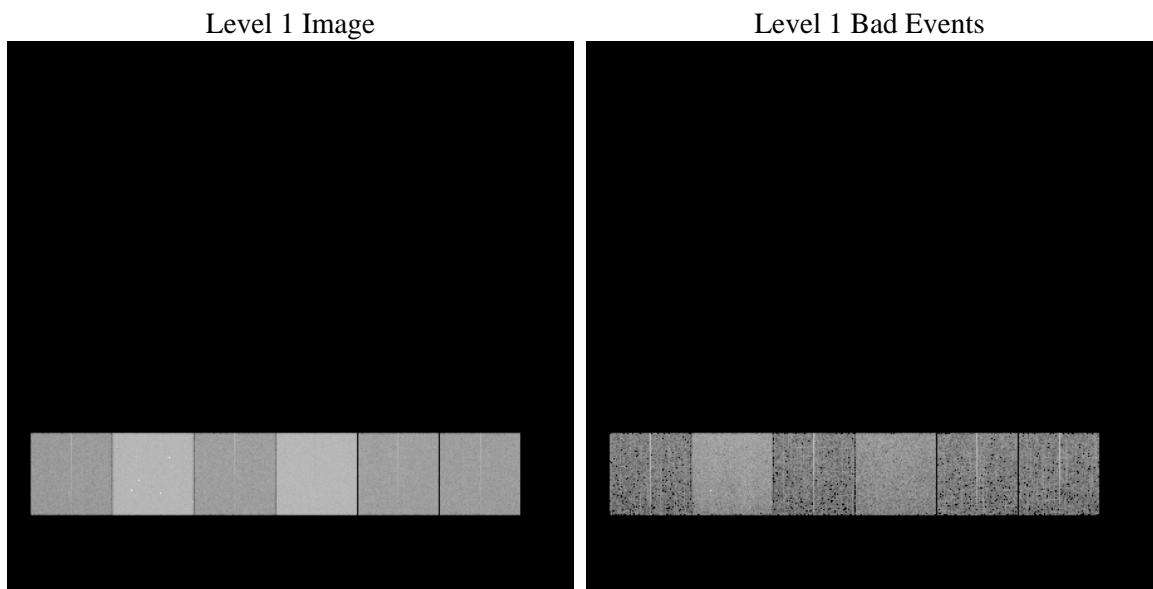
# 1 Front

seq_num	&#160	Sequence number
obs_id	61371	Observation id
title	ACIS-456789 diagnostics	Proposal title
observer	CHANDRA engineering request/realtime commanding	Principal investig
object	&#160	Source name
dtcycle	0	&#160
cycle	P	events from which exps? Prim/Second/Both
ra_targ	0.0	Observer's specified target RA [deg]
dec_targ	0.0	Observer's specified target Dec [deg]
ra_nom	340.0370026056	Nominal RA [deg]
dec_nom	44.988358944248	Nominal Dec [deg]
roll_nom	303.2100438593	Nominal Roll [deg]
revision	3	Processing version of data
ontime	6826.2872364521	Sum of GTIs [s]
livetime	6739.8486771674	Livetime [s]
ontime4	2478.6668221503	Sum of GTIs [s]
ontime5	7318.9132261872	Sum of GTIs [s]
ontime6	2690.786217019	Sum of GTIs [s]
ontime7	6826.2872364521	Sum of GTIs [s]
ontime8	2770.4012819976	Sum of GTIs [s]
ontime9	2611.3852220476	Sum of GTIs [s]
l2events	1304211	Number of level 2 events

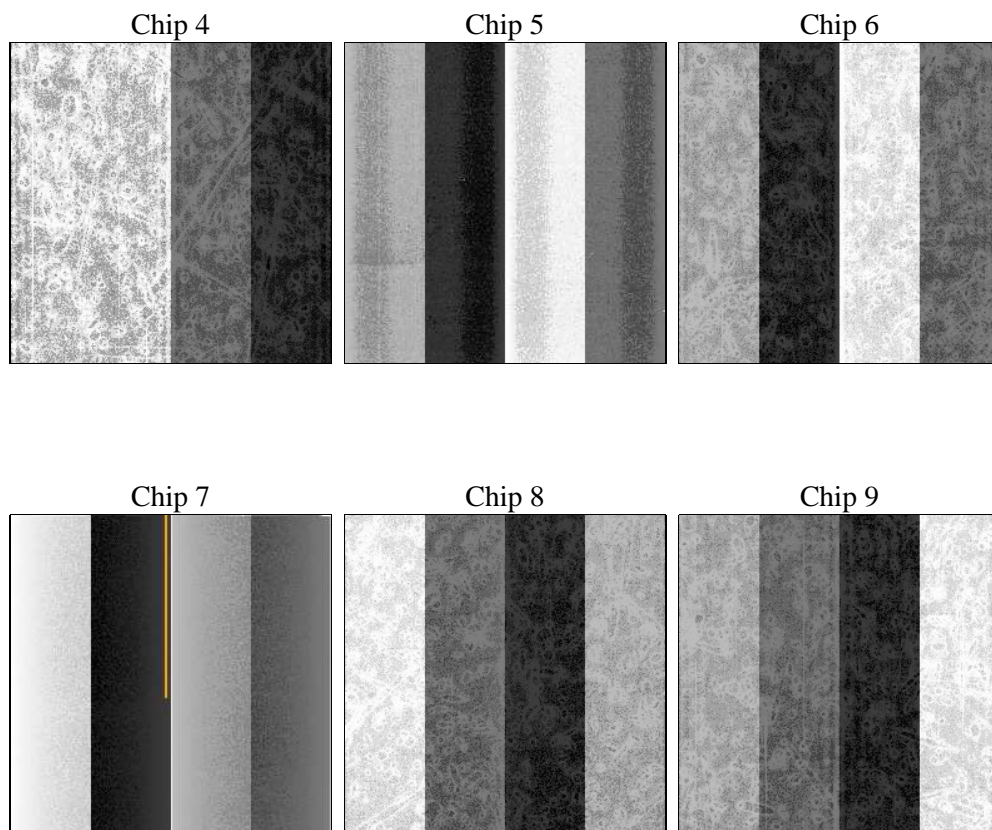
## 2 OBI

### 2.1 OBI

#### 2.1.1 Images



#### 2.1.2 Bias



### 2.1.3 Parameters

obi_num	0	Obi number	sched_exp_time	0.0	[s] Scheduled observation exposure time
ascdsver	8.4.5	Processing system revision	ontime	6826.2872364521	Sum of GTIs [s]
caldsver	4.5.2	&#160	ontime4	2478.6668221503	Sum of GTIs [s]
date	2012-09-29T15:42:41	Date and time of file creation	ontime5	7318.9132261872	Sum of GTIs [s]
revision	3	Processing version of data	ontime6	2690.786217019	Sum of GTIs [s]
			ontime7	6826.2872364521	Sum of GTIs [s]
			ontime8	2770.4012819976	Sum of GTIs [s]
			ontime9	2611.3852220476	Sum of GTIs [s]
			l1events	1543096	Number of level 1 events

### 2.1.4 Events

	ccd 4	ccd 5	ccd 6	ccd 7	ccd 8	ccd 9		ccd 4	ccd 5	ccd 6	ccd 7	ccd 8	ccd 9
level 1 events	154310	423705	178479	432313	185320	168969	grade 0 events	75009	88543	85070	99849	88539	79953
rejected events	21661	53564	22210	37335	23721	22555		48%	20%	47%	23%	47%	47%
rejected %	14%	12%	12%	8%	12%	13%	grade 1 events	402	275	461	294	459	452
								0%	0%	0%	0%	0%	0%
							grade 2 events	23401	133642	27183	87344	28522	26021
								15%	31%	15%	20%	15%	15%
							grade 3 events	8115	23097	9750	40129	10224	9152
								5%	5%	5%	9%	5%	5%
							grade 4 events	8057	22855	9743	39559	10182	8964
								5%	5%	5%	9%	5%	5%
							grade 5 events	1335	10052	1581	7521	1785	1561
								0%	2%	0%	1%	0%	0%
							grade 6 events	18067	102188	24717	128275	24132	22324
								11%	24%	13%	29%	13%	13%
							grade 7 events	19924	43053	19974	29342	21477	20542
								12%	10%	11%	6%	11%	12%

## 2.2 Compared Parameters

Parameter	Planned	Actual	Parameter	Planned	Actual
Instrument	ACIS	ACIS	Obspar format version number	7	7
Detector	ACIS-456789	ACIS-456789	Obspar file type	PREDICTED	ACTUAL
Grating	NONE	NONE	Obspar update status	NONE	UPDATED
Data mode	FAINT	FAINT	On-chip summing requested	N	N
Observation mode	SECONDARY	SECONDARY	Subarray requested	NONE	NONE
[deg] Pointing RA	0	340.0370026056024	Alternating exposures requested	N	N
[deg] Pointing Dec	0	44.98835894424803	[s] Primary exposure time	0.000000	3.2
[deg] Pointing Roll	0.0	303.2100438592996			
[mm] SIM focus pos	-0.684267	-0.6828225247311905			
[mm] SIM defocus	0	0.8505141146731063			
[mm] SIM translation stage pos	-190.132523	250.466033080201			
[mm] SIM translation stage offset	0	-0.01005468664627074			
[s] Observation start time (MET)	125680323.371	125680322.60226			
Observation start date	2001-12-25T15:12:03	2001-12-25T15:12:02			
[s] Observation end time (MET)	125701633.122	125701632.35311			
Observation end date	2001-12-25T21:07:13	2001-12-25T21:07:12			
Read mode	TIMED	TIMED			

## 2.3 Star Slots

## 2.4 FID Slots

## **A Summary**

### **A.1 Status**

V&V Scientist	Jen Lauer
V&V Date (YYYY-MM-DD)	2012.10.01
V&V Edition	1
V&V Disposition and Status	OK
V&V Charge Time	6.8262872364521

### **A.2 Comments**