

# V&V Reference Report

## L2 ASCDS Version : 8.4.5

Observation 61367 - L2 Version 3  
Chandra X-Ray Center

L2 Processing Date : Sep 29 2012

## Contents

<b>1</b>	<b>Front</b>	<b>2</b>
<b>2</b>	<b>OBI</b>	<b>3</b>
2.1	OBI . . . . .	3
2.1.1	Images . . . . .	3
2.1.2	Bias . . . . .	3
2.1.3	Parameters . . . . .	4
2.1.4	Events . . . . .	4
2.2	Compared Parameters . . . . .	5
2.3	Star Slots . . . . .	6
2.4	FID Slots . . . . .	6
<b>A</b>	<b>Summary</b>	<b>7</b>
A.1	Status . . . . .	7
A.2	Comments . . . . .	7

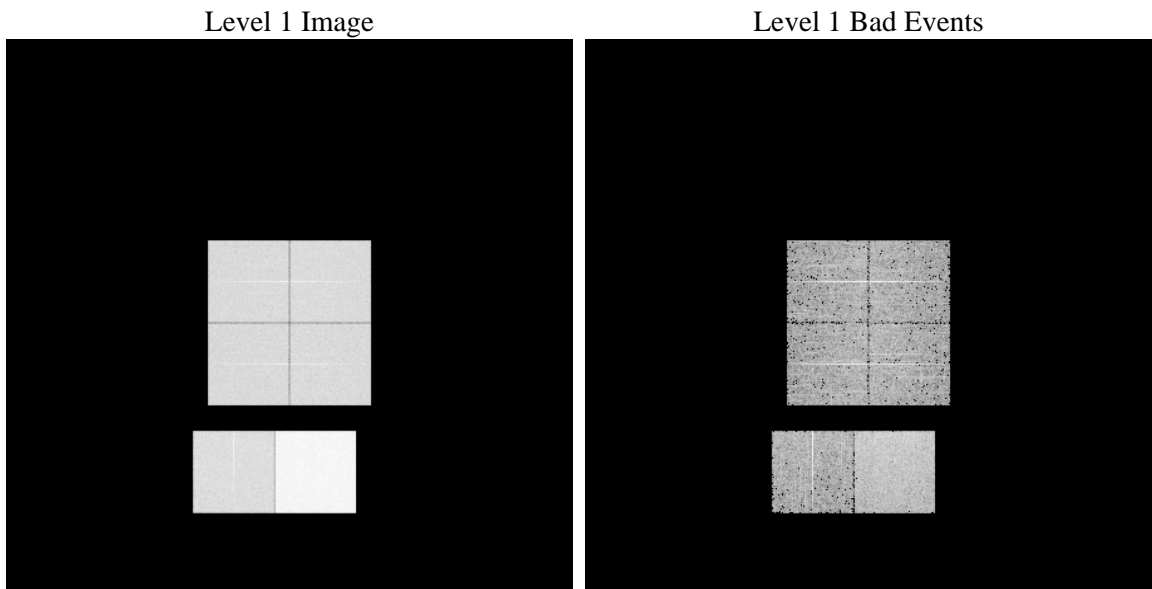
# 1 Front

seq_num	&#160	Sequence number
obs_id	61367	Observation id
title	ACIS-012367 diagnostics	Proposal title
observer	CHANDRA engineering request/realtime commanding	Principal investig
object	&#160	Source name
dtcycle	0	&#160
cycle	P	events from which exps? Prim/Second/Both
ra_targ	0.0	Observer's specified target RA [deg]
dec_targ	0.0	Observer's specified target Dec [deg]
ra_nom	355.02527650674	Nominal RA [deg]
dec_nom	14.985040994708	Nominal Dec [deg]
roll_nom	295.72508279072	Nominal Roll [deg]
revision	3	Processing version of data
ontime	8291.2000077069	Sum of GTIs [s]
livetime	8186.211840848	Livetime [s]
ontime0	3152.3796878457	Sum of GTIs [s]
ontime1	3232.0455706269	Sum of GTIs [s]
ontime2	3031.1020079851	Sum of GTIs [s]
ontime3	3077.7537877262	Sum of GTIs [s]
ontime6	3368.1685120314	Sum of GTIs [s]
ontime7	8291.2000077069	Sum of GTIs [s]
l2events	1313728	Number of level 2 events

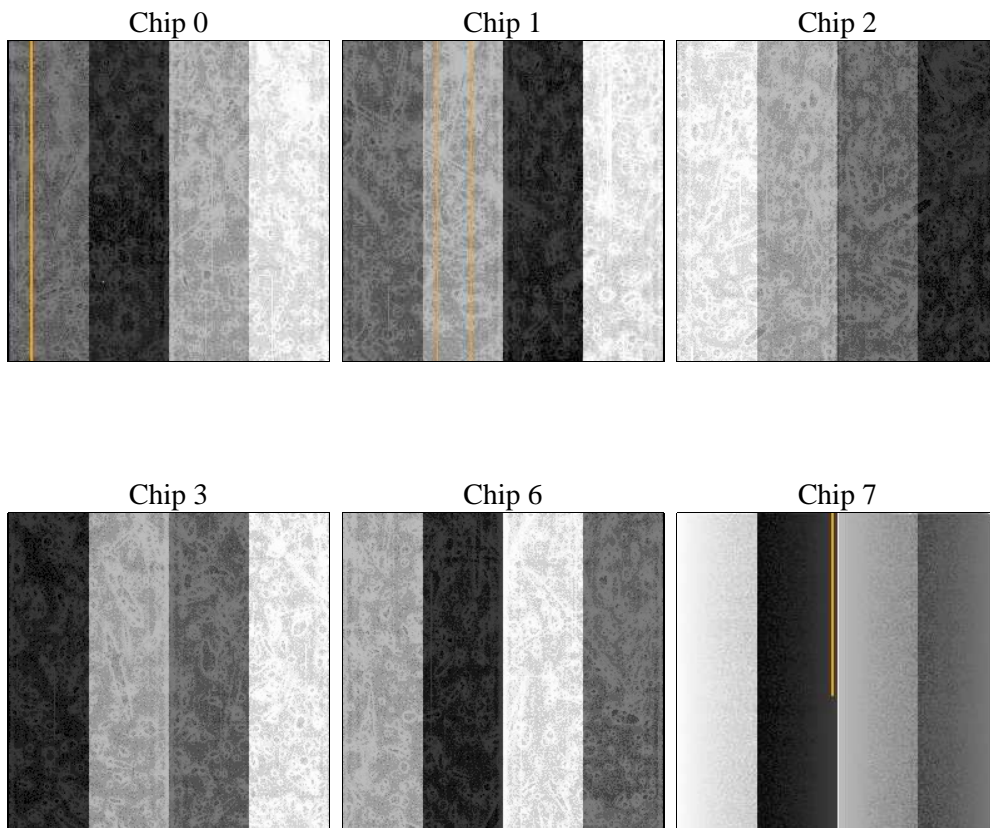
## 2 OBI

### 2.1 OBI

#### 2.1.1 Images



#### 2.1.2 Bias



### 2.1.3 Parameters

obi_num	1	Obi number	sched_exp_time	0.0	[s] Scheduled observation exposure time
ascdsver	8.4.5	Processing system revision	ontime	8291.2000077069	Sum of GTIs [s]
caldsver	4.5.2	&#160	ontime0	3152.3796878457	Sum of GTIs [s]
date	2012-09-29T16:32:21	Date and time of file creation	ontime1	3232.0455706269	Sum of GTIs [s]
revision	3	Processing version of data	ontime2	3031.1020079851	Sum of GTIs [s]
			ontime3	3077.7537877262	Sum of GTIs [s]
			ontime6	3368.1685120314	Sum of GTIs [s]
			ontime7	8291.2000077069	Sum of GTIs [s]
			l1events	1537097	Number of level 1 events

### 2.1.4 Events

	ccd 0	ccd 1	ccd 2	ccd 3	ccd 6	ccd 7		ccd 0	ccd 1	ccd 2	ccd 3	ccd 6	ccd 7
level 1 events	197484	202438	193180	196517	221333	526145	grade 0 events	95251	98263	93797	96047	106263	120850
rejected events	24209	23724	24478	24816	26055	45848		48%	48%	48%	48%	48%	22%
rejected %	12%	11%	12%	12%	11%	8%	grade 1 events	541	528	495	512	561	332
								0%	0%	0%	0%	0%	0%
							grade 2 events	30427	31188	29391	30057	34049	106496
								15%	15%	15%	15%	15%	20%
							grade 3 events	11014	11508	10651	10950	12098	48929
								5%	5%	5%	5%	5%	9%
							grade 4 events	11016	11422	10639	10741	11971	48227
								5%	5%	5%	5%	5%	9%
							grade 5 events	1652	1799	1616	1675	1915	9475
								0%	0%	0%	0%	0%	1%
							grade 6 events	25567	26333	24224	23906	30897	155795
								12%	13%	12%	12%	13%	29%
							grade 7 events	22016	21397	22367	22629	23579	36041
								11%	10%	11%	11%	10%	6%

## 2.2 Compared Parameters

Parameter	Planned	Actual	Parameter	Planned	Actual
Instrument	ACIS	ACIS	Obspar format version number	7	7
Detector	ACIS-012367	ACIS-012367	Obspar file type	PREDICTED	ACTUAL
Grating	NONE	NONE	Obspar update status	NONE	UPDATED
Data mode	FAINT	FAINT	On-chip summing requested	N	N
Observation mode	SECONDARY	SECONDARY	Subarray requested	NONE	NONE
[deg] Pointing RA	0	355.0252765067422	Alternating exposures requested	N	N
[deg] Pointing Dec	0	14.98504099470848	[s] Primary exposure time	3.2	3.2
[deg] Pointing Roll	0.0	295.7250827907216			
[mm] SIM focus pos	-0.782348	-1.428180813131781			
[mm] SIM defocus	0	0.1051558262725154			
[mm] SIM translation stage pos	-233.592463	250.466033080201			
[mm] SIM translation stage offset	0	-0.01005468664627074			
[s] Observation start time (MET)	125912432.580033	125912431.81157			
Observation start date	2001-12-28T07:40:33	2001-12-28T07:40:31			
[s] Observation end time (MET)	125927116.730622	125927115.96216			
Observation end date	2001-12-28T11:45:17	2001-12-28T11:45:15			
Read mode	TIMED	TIMED			

## **2.3 Star Slots**

## **2.4 FID Slots**

## A Summary

### A.1 Status

V&V Scientist	Jen Lauer
V&V Date (YYYY-MM-DD)	2012.10.01
V&V Edition	1
V&V Disposition and Status	OK
V&V Charge Time	8.2912000077069

### A.2 Comments