

# V&V Reference Report

## L2 ASCDS Version : 7.6.10

Observation 61367 - L2 Version 001  
Chandra X-Ray Center

L2 Processing Date : Jan 17 2007

## Contents

<b>1</b>	<b>Front</b>	<b>2</b>
<b>2</b>	<b>OBI</b>	<b>3</b>
2.1	OBI . . . . .	3
2.1.1	Images . . . . .	3
2.1.2	Bias . . . . .	3
2.1.3	Parameters . . . . .	4
2.1.4	Events . . . . .	4
2.2	Compared Parameters . . . . .	5
2.3	Star Slots . . . . .	6
2.4	FID Slots . . . . .	6
<b>A</b>	<b>Summary</b>	<b>7</b>
A.1	Status . . . . .	7
A.2	Comments . . . . .	7

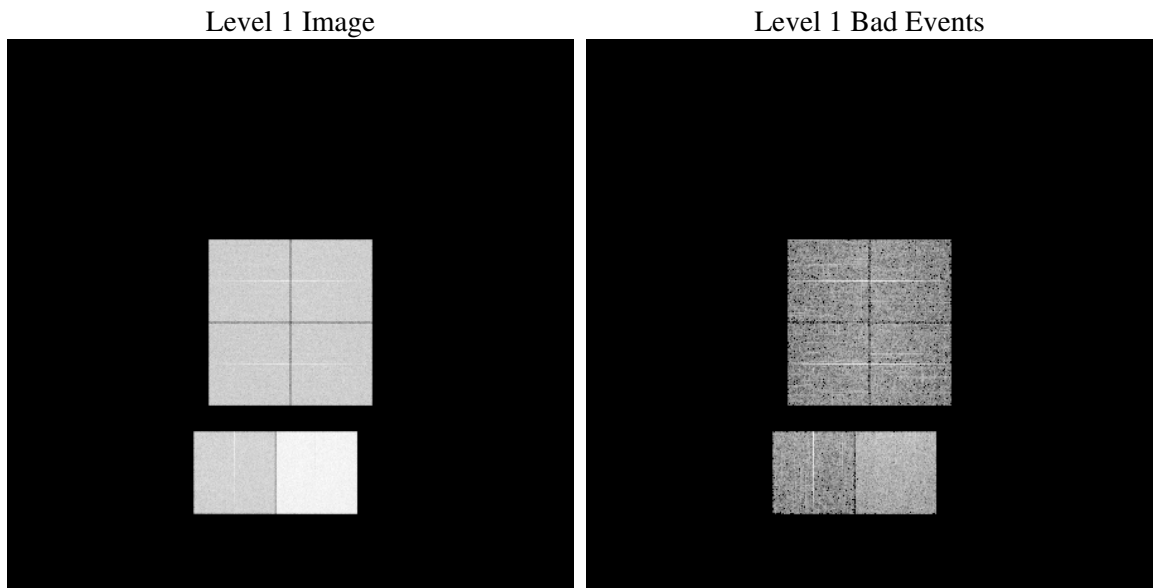
# 1 Front

seq_num	&#160
obs_id	61367
title	ACIS-012367 diagnostics
observer	CHANDRA engineering request/realtime commanding
object	&#160
dtcycle	0
cycle	P
ra_targ	0.0
dec_targ	0.0
ra_nom	355.025276512
dec_nom	14.985040990908
roll_nom	295.72508278962
revision	2
ontime	8290.918756038
livetime	8185.9341505571
ontime0	3150.7796878517
ontime1	3231.8463989496
ontime2	3030.9438763112
ontime3	3076.1537877321
ontime6	3368.0514203608
ontime7	8290.918756038
l2events	1312643

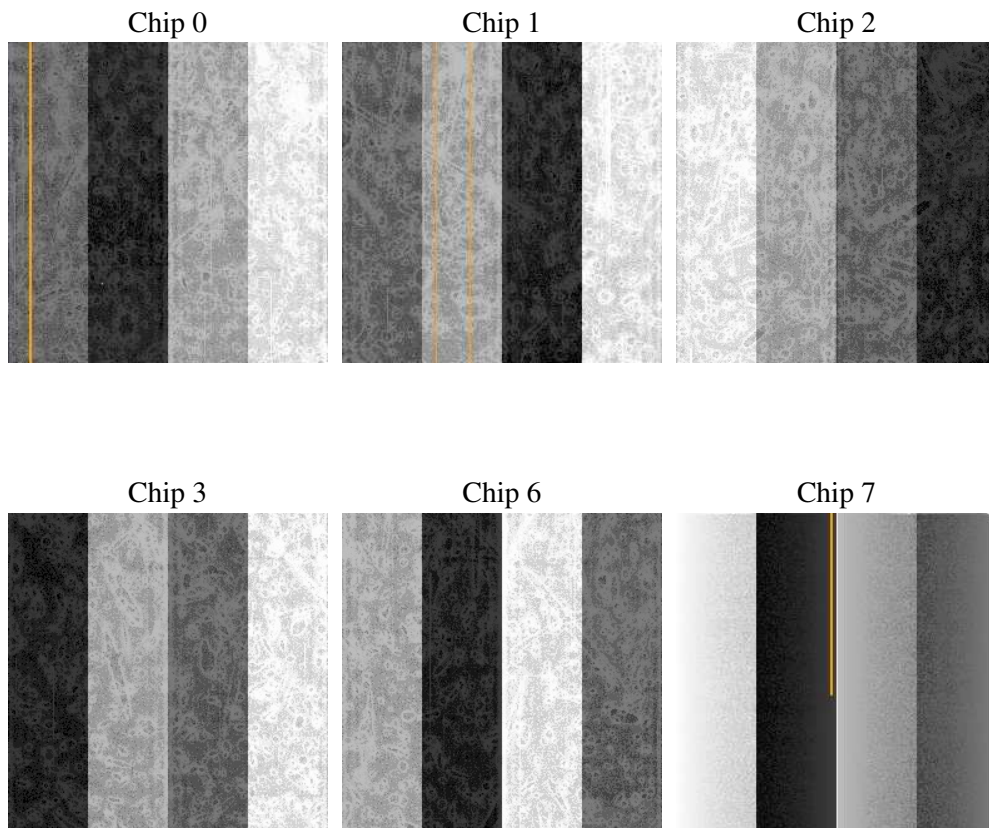
## 2 OBI

### 2.1 OBI

#### 2.1.1 Images



#### 2.1.2 Bias



### 2.1.3 Parameters

obi_num	1
ascdsver	7.6.10
caldsver	3.3.0
date	2007-01-17T05:38:39
revision	2

sched_exp_time	0.0
ontime	8290.918756038
ontime0	3150.7796878517
ontime1	3231.8463989496
ontime2	3030.9438763112
ontime3	3076.1537877321
ontime6	3368.0514203608
ontime7	8290.918756038
l1events	1537097

### 2.1.4 Events

	ccd 0	ccd 1	ccd 2	ccd 3	ccd 6	ccd 7
level 1 events	197484	202438	193180	196517	221333	526145
rejected events	24394	23892	24671	25007	26275	46019
rejected %	12%	11%	12%	12%	11%	8%

	ccd 0	ccd 1	ccd 2	ccd 3	ccd 6	ccd 7
grade 0 events	95256	98265	93804	96051	106271	120828
	48%	48%	48%	48%	48%	22%
grade 1 events	541	528	495	512	561	332
	0%	0%	0%	0%	0%	0%
grade 2 events	30422	31186	29384	30053	34041	106521
	15%	15%	15%	15%	15%	20%
grade 3 events	11016	11508	10655	10951	12100	48918
	5%	5%	5%	5%	5%	9%
grade 4 events	11018	11423	10640	10743	11974	48219
	5%	5%	5%	5%	5%	9%
grade 5 events	1651	1799	1617	1676	1915	9473
	0%	0%	0%	0%	0%	1%
grade 6 events	25564	26334	24219	23904	30893	155805
	12%	13%	12%	12%	13%	29%
grade 7 events	22016	21395	22366	22627	23578	36049
	11%	10%	11%	11%	10%	6%

## 2.2 Compared Parameters

Parameter	Planned	Actual	Parameter	Planned	Actual
Instrument	ACIS	ACIS	Obspar format version number	6	6
Detector	ACIS-012367	ACIS-012367	Obspar file type	PREDICTED	ACTUAL
Grating	NONE	NONE	Obspar update status	NONE	UPDATED
Data mode	FAINT	FAINT	On-chip summing requested	N	N
Observation mode	SECONDARY	SECONDARY	Subarray requested	NONE	NONE
Pointing RA	0	355.0252765120043	Alternating exposures requested	N	N
Pointing Dec	0	14.98504099090755	Primary exposure time	3.2	3.2
Pointing Roll	0.0	295.725082789623			
SIM focus pos (mm)	-0.782348	-1.428180813131781			
SIM defocus (mm)	0	0.1051558262725154			
SIM translation stage pos (mm)	-233.592463	250.466033080201			
SIM translation stage offset (mm)	0	-0.01005468664627074			
Observation start time	125912432.580033	125912431.81157			
Observation start date	2001-12-28T07:40:33	2001-12-28T07:40:31			
Observation end time	125927116.730622	125927115.96216			
Observation end date	2001-12-28T11:45:17	2001-12-28T11:45:15			
Read mode	TIMED	TIMED			

## **2.3 Star Slots**

## **2.4 FID Slots**

## A Summary

### A.1 Status

V&V Scientist	Jen Lauer
V&V Date (YYYY-MM-DD)	2007.01.17
V&V Edition	1
V&V Disposition and Status	OK
V&V Charge Time	8.29091875

### A.2 Comments